

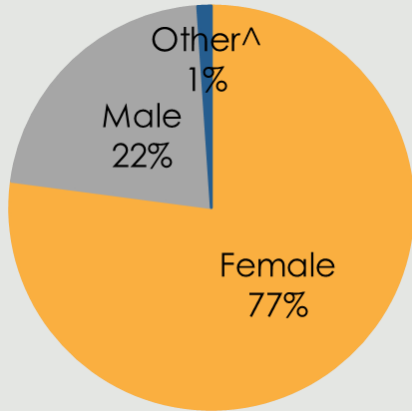
TOWN OF GILBERT

Responses to the 2019 Community Health Assessment Survey from the residents of Gilbert.

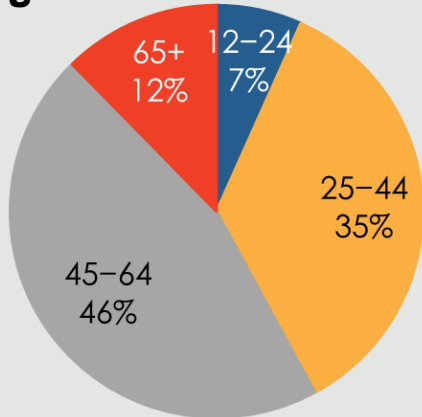
Who took the Survey in Gilbert?

.....

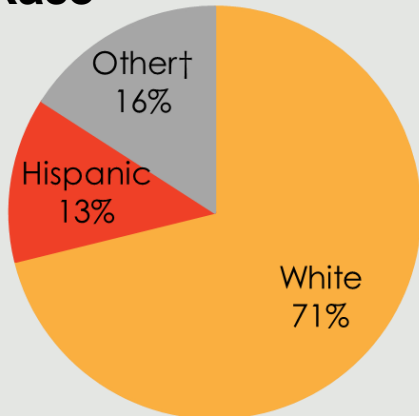
Gender



Age



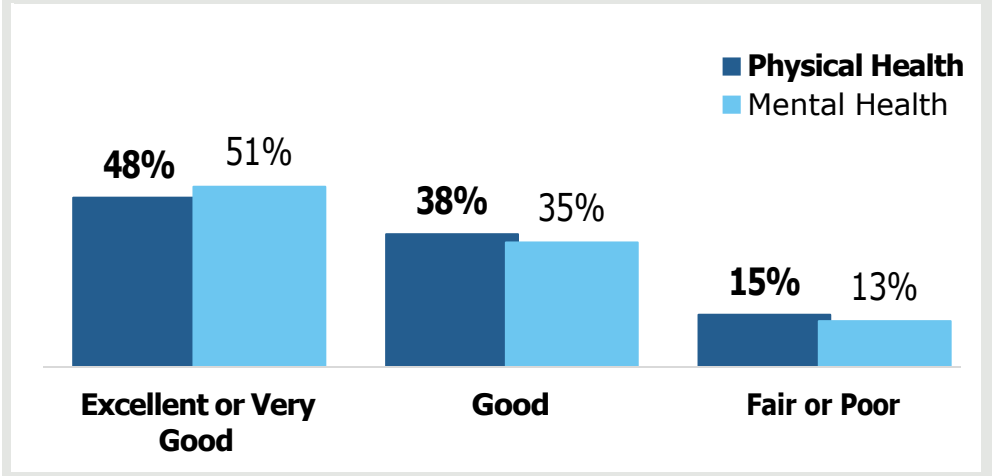
Race



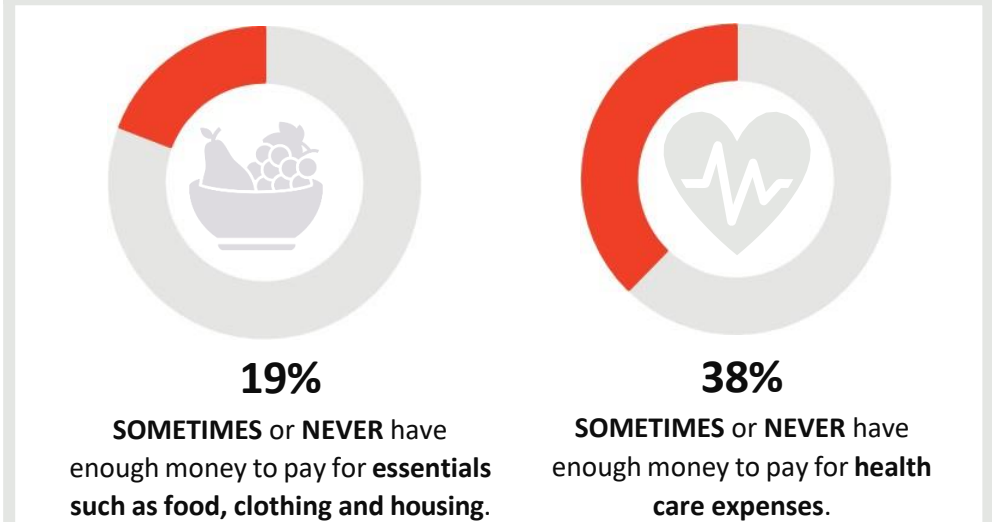
4%

reported a household income of **less than \$20,000.**

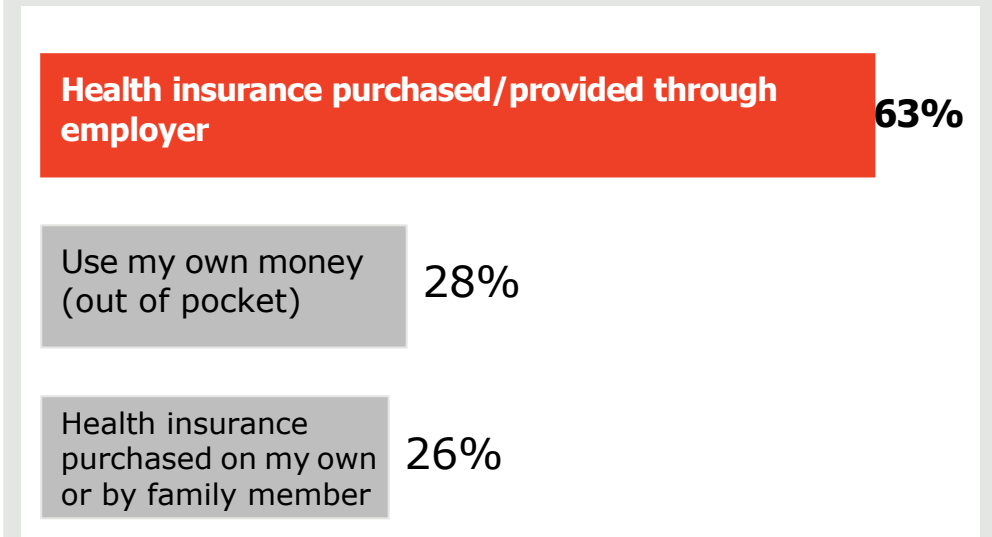
How do Gilbert respondents rate their Physical and Mental Health?



Do Gilbert respondents struggle each month to pay for medical care and/or necessities?



How do Gilbert residents pay for health care?



374 surveys collected.

Some demographic data may total over 100% due to rounding.

[^] The 'Other' category includes 'Transgender' responses for gender.

[†] Due to low response rates, the 'Other' category includes 'Asian', 'Native Hawaiian', 'Alaska Native', 'American Indian/Native American', 'Black or African American', 'Multi-racial', and 'Other' responses or race/ethnicity.

The Town of Gilbert Survey Respondents

TOP 3 COMMUNITY STRENGTHS



| | |
|--------------------------------------|----------|
| Access to Parks and Recreation Sites | -----70% |
| Low Crime/Safe Neighborhoods | -----63% |
| Good Place to Raise Children | -----60% |

TOP 3 COMMUNITY ISSUES



| | |
|----------------------------|----------|
| Distracted Driving | -----60% |
| Bullying/Peer Pressure | -----31% |
| Lack of Affordable Housing | -----23% |

TOP 3 BARRIERS TO HEALTHCARE



| | |
|---|----------|
| Underinsured | -----35% |
| Inconvenient Office Hours | -----39% |
| Difficulty Finding the Right Provider for my Care | -----33% |

TOP 3 HEALTH CONDITIONS



| | |
|----------------------------|----------|
| Mental Health Issues | -----46% |
| Overweight or Obesity | -----43% |
| Alcohol or Substance Abuse | -----41% |

Want More?

- Find out how your city compares to other cities in Maricopa County.
- Submit a Data Request to obtain regional survey results.
- Join Synapse to partner with local organizations.

Contact:

[Eileen Aguilar](#)

(602) 859-4763

Eileen.Aguilar@maricopa.gov

Data Request:

<https://www.maricopa.gov/data-request>