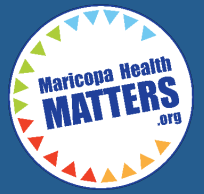


85251, 85257, 85281

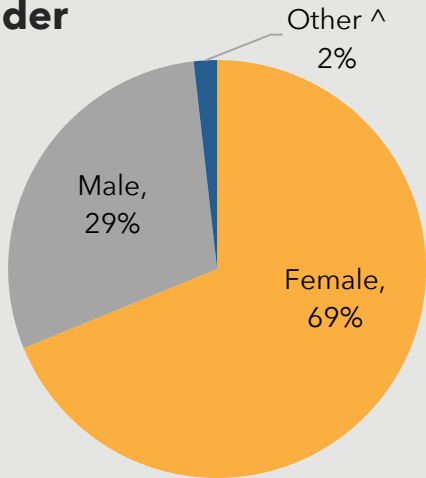


ZONE 9

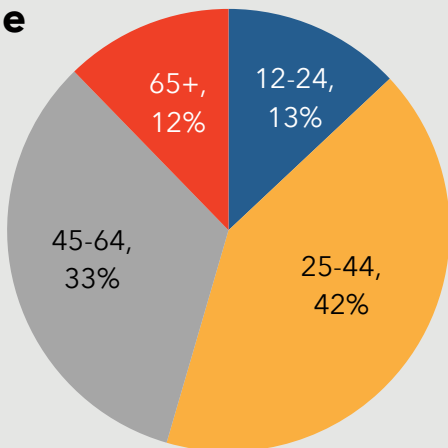
Responses to the 2019 Community Health Assessment Survey from the residents of Zone 9.

Who took the survey in Zone 9?

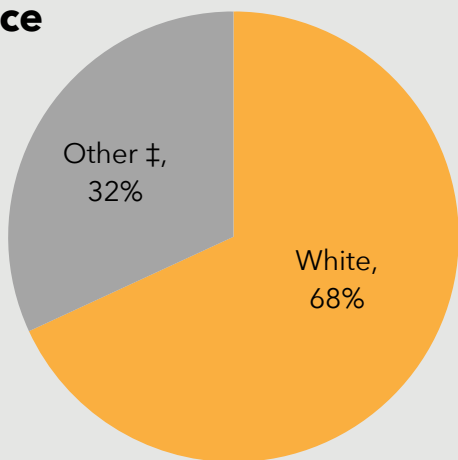
Gender



Age



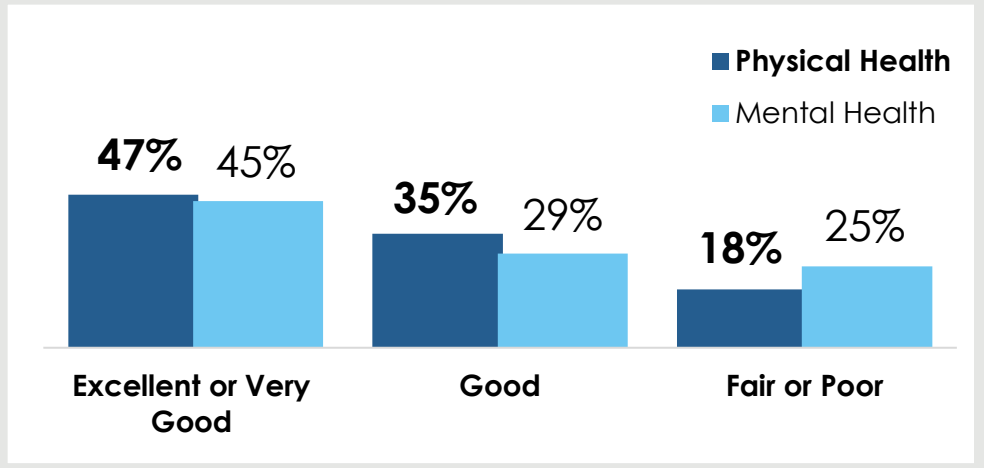
Race



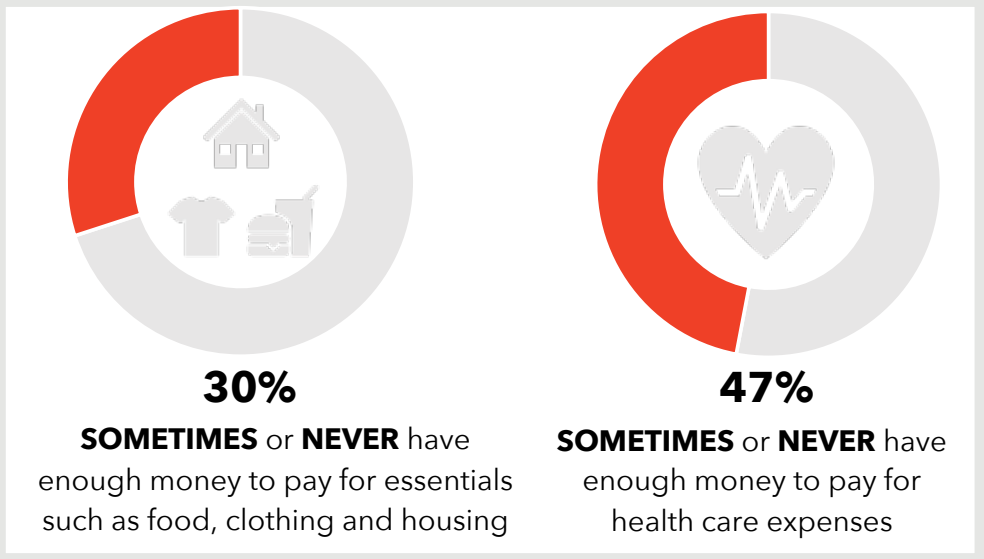
20%

reported a household income of **less than \$20,000.**

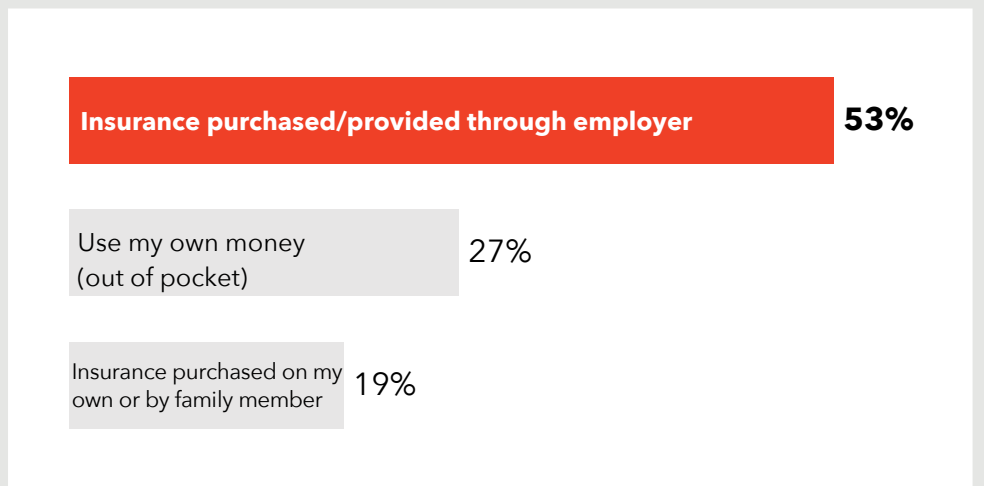
How do respondents in Zone 9 rate their Physical and Mental Health?



Do respondents in Zone 9 struggle each month to pay for medical care and/or necessities?



How do residents in Zone 9 pay for their health care?



280 surveys collected.

^ The 'Other' category includes 'Transgender' responses for gender.

‡ Due to low response rates, the 'Other' category includes 'Asian', 'Black or African American', 'American Indian or Native American', 'Hispanic or Latino', 'Multi-racial', 'Native Hawaiian or Other Pacific Islander', and 'Other' responses on race/ethnicity.

TOP 3
COMMUNITY
STRENGTHS



Access to parks and recreation sites	----- 74%
Access to public libraries and community centers	----- 59%
Access to safe walking and bike routes	----- 49%

TOP 3
COMMUNITY
ISSUES



Distracted driving	----- 48%
Homelessness	----- 45%
Lack of affordable housing	----- 37%

TOP 3
BARRIERS TO
HEALTHCARE



Underinsured	----- 43%
Difficulty finding the right provider for my care	----- 35%
Inconvenient office hours	----- 30%

TOP 3
HEALTH
CONDITIONS



Alcohol/substance abuse	----- 60%
Mental health issues	----- 51%
Overweight/obesity	----- 42%

Want More?

- Find out how your city compares to other cities in Maricopa County.
- Submit a Data Request to obtain regional survey results.
- Join Synapse to partner with local organizations.

Contact:

Eileen Aguilar
(602) 859-4763

Eileen.Aguilar@maricopa.gov

Data Request:

<https://www.maricopa.gov/data-request>