

November 2023

2023 Weekly Heat Report

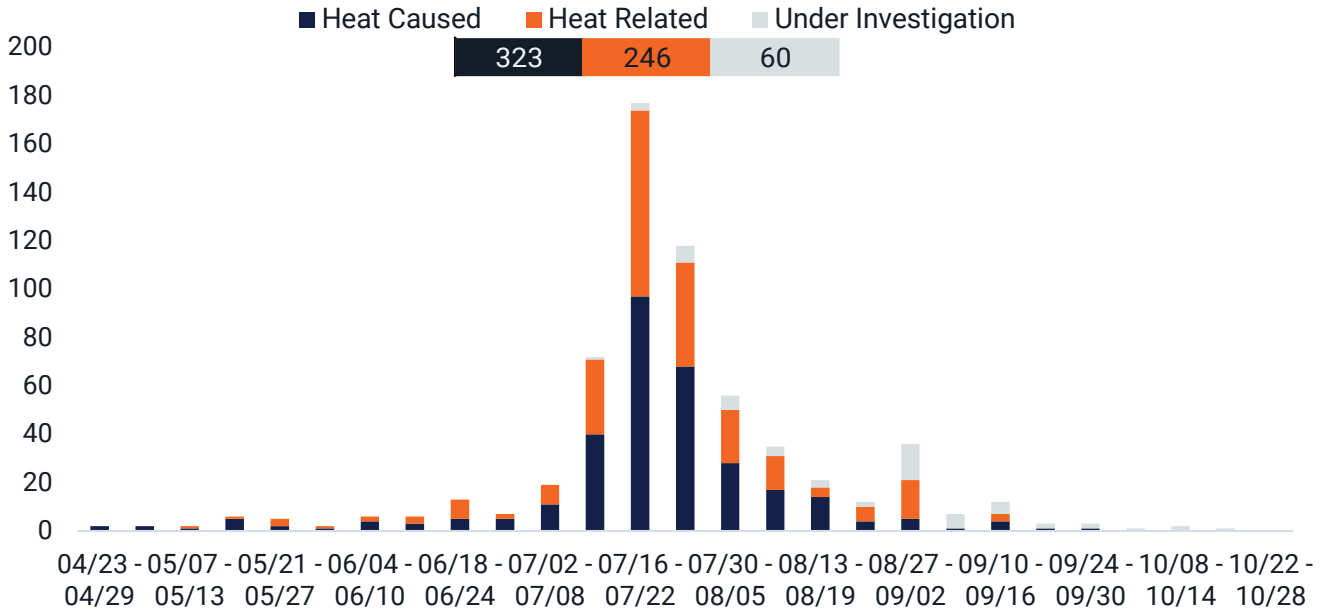
Maricopa County Department of Public Health (MCDPH) conducts weekly heat-associated mortality surveillance. The enhanced heat surveillance season usually begins in May and ends in October. This heat season (2023), there have been a total of **569 confirmed heat-associated deaths**. Cooling and hydration stations in Maricopa County are open to the public throughout the heat season. For more information on heat, please visit <http://heataz.org>.

Maricopa County
Department of Public Health
Epidemiology & Informatics

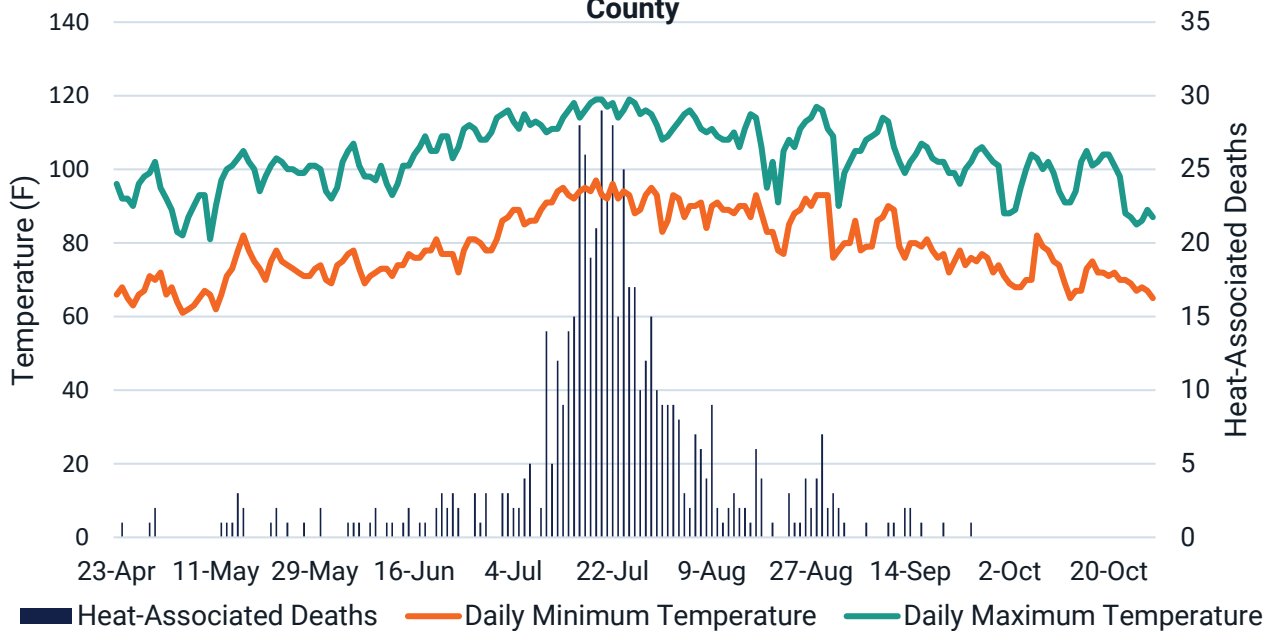
2023 Heat Associated Deaths: Week 43 10/22 - 10/28

Year	Confirmed	Under Investigation	First Death
2023 Cumulative Total	569	60	4/11/2023
2022 Cumulative Total	378	66	3/13/2022

Graph 1. There have been 569 heat-associated deaths in Maricopa County as of 11/01/2023



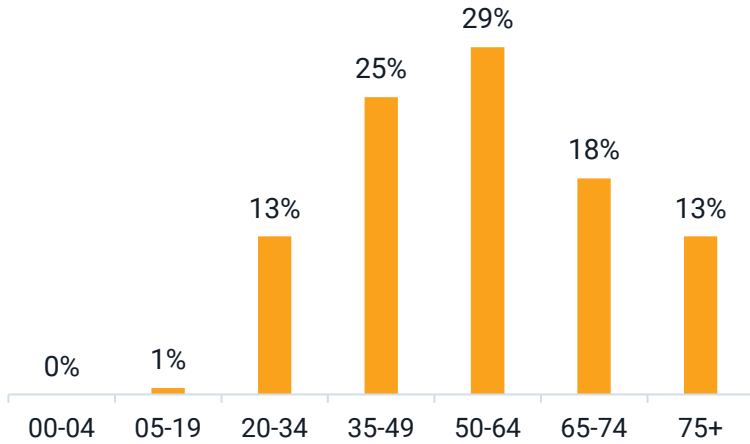
Graph 2. Heat-associated deaths and environmental temperature in Maricopa County



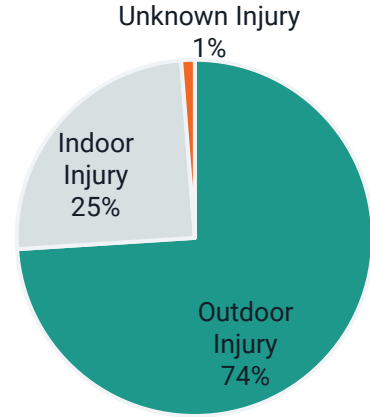
*One case is heat-caused from January that had an injury that occurred during Summer 2022. One heat related and heat caused death occurred during early April. All under investigation deaths occurred during July-October.

2023 Heat Associated Deaths: Week 43 10/22 - 10/28

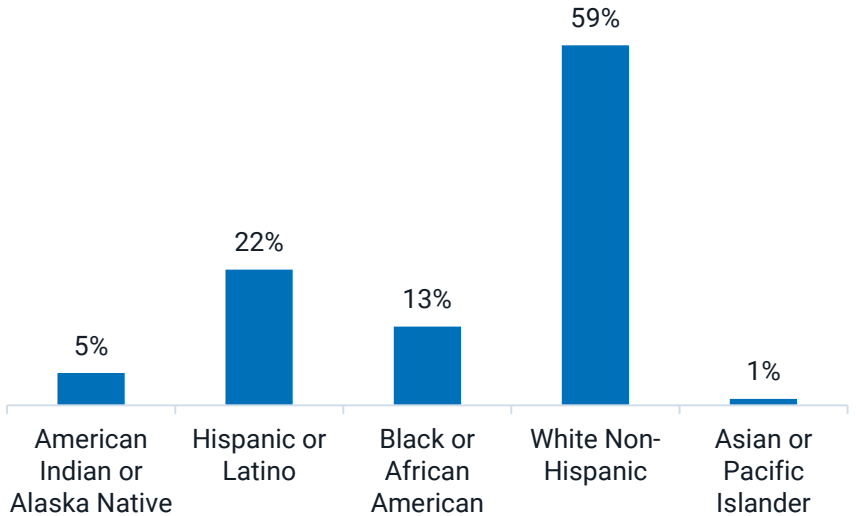
Graph 3. Heat-associated deaths by age group in Maricopa County



Graph 4. There have been 141 indoor heat-associated deaths in Maricopa County as of 11/01/2023



Graph 6. Heat-associated deaths by race and ethnicity in Maricopa County



Graph 5. Heat-associated deaths by living situation in Maricopa County

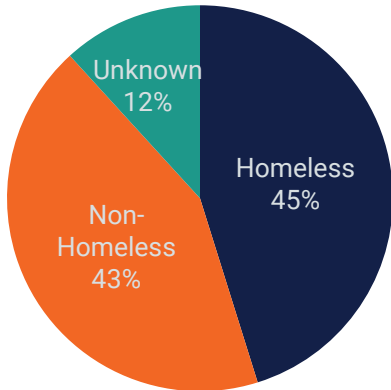
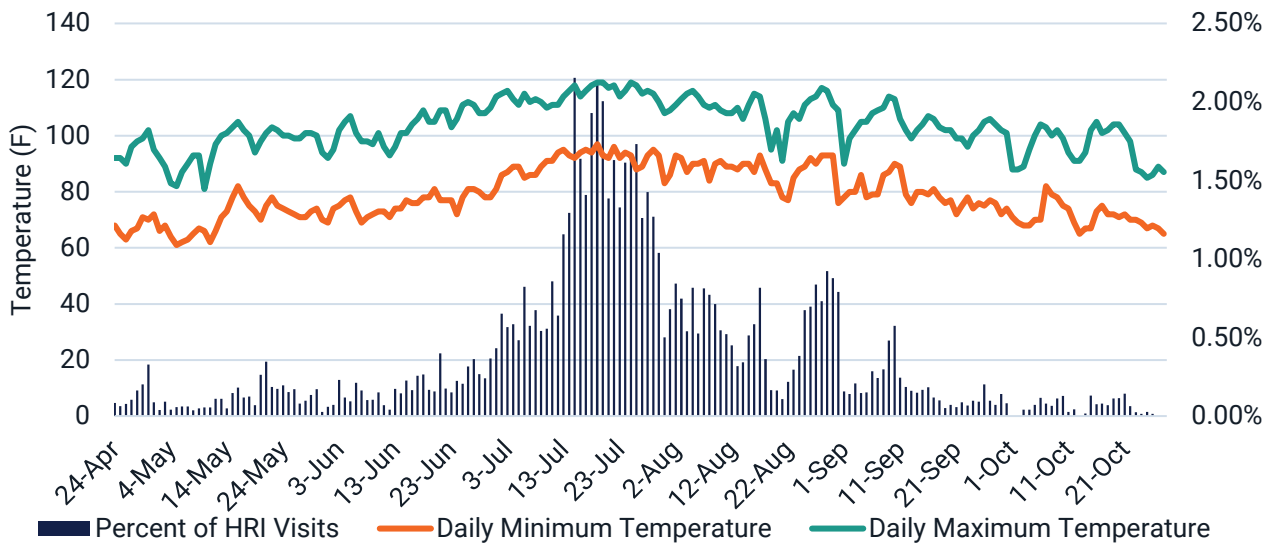


Table 2. Air conditioning status among heat-associated indoor deaths, Maricopa County 2023

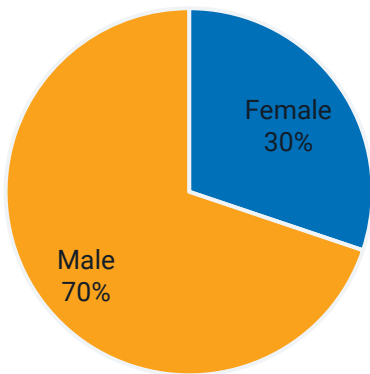
Air Conditioning Status	Count	Percentage
Air Conditioning Present	124	88%
Non-Functioning	106	85%
No Electricity	2	2%
Not in Use	15	12%
Unknown Reason	1	1%
No Air Conditioning Present	13	9%
Unknown if Air Conditioning is Present	4	3%
Total Indoor Deaths	141	100%

2023 Heat Associated Hospital Visits: Week 43 10/22 - 10/28

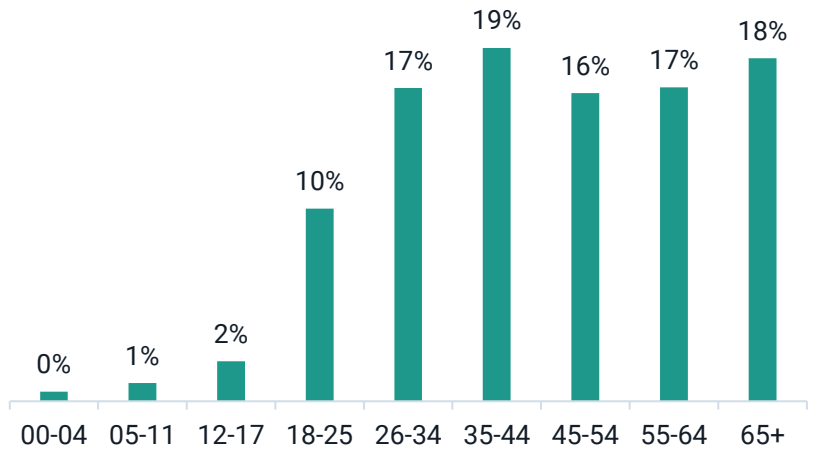
Graph 7. Heat Related Illness (HRI) Hospital Visits in Maricopa County



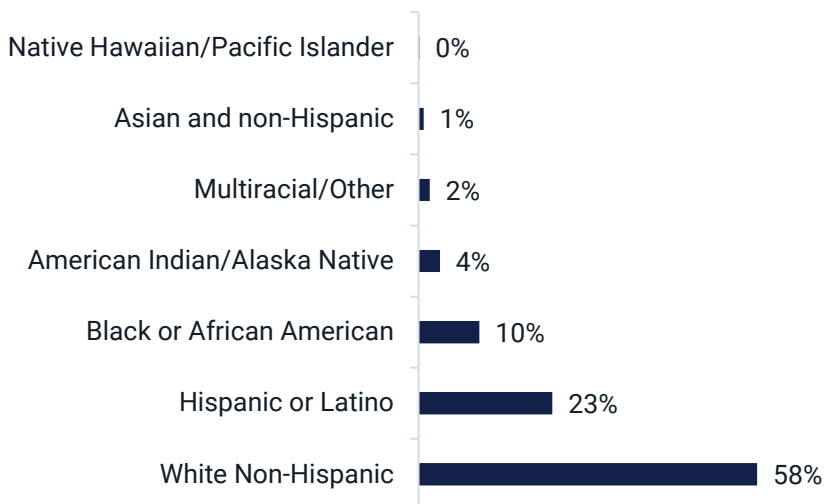
Graph 8. HRI by Sex



Graph 9. HRI Visits by Age Group



Graph 10. HRI by Race and Ethnicity



Graph 11. HRI Visits Among Individuals Experiencing Homelessness



Heat Associated Deaths in Maricopa County

**Counts are preliminary and may increase as additional data are received.*

Heat Caused (HC): Cases that mention heat or heat exposure in Part I of the death certificate causes of death (diseases or conditions in the direct sequence causing death), for variables cod_a, cod_b, cod_c, or cod_d. County of death: Maricopa.

Heat Related (HR): Cases that mention heat exposure in Part II of the death certificate causes of death (diseases and conditions contributing but not directly resulting in the death sequence), but not in any of the Part I variables (cod_a, cod_b, cod_c, or cod_d). County of death: Maricopa.

Under Investigation (UI): Cases the Maricopa County Office of Medical Examiner suspects are heat associated deaths.

Data Sources: Maricopa County, Office of Vital Registration and Office of Medical Examiner; Arizona Department of Health Services, Office of Vital Registration

Heat Associated Hospital Visits in Maricopa County

The figures and tables summarize the percentage of emergency department and inpatient hospital visits for individuals experiencing heat-related illnesses (HRI) according to the BioSense data from 15 Maricopa County emergency department and inpatient hospitals. This data includes both Maricopa residents and non-residents. Prior to May 2019, 13 Maricopa County hospitals reported to BioSense. Included are daily maximum and minimum temperatures as well as selected demographics. The BioSense Platform ESSENCE tool locates heat-related illness visits by identifying key terms and codes within the chief complaint field (i.e., the patient's stated reason for visit), admission reason field (i.e., the provider's noted reason for admission), and discharge diagnosis code field (i.e., ICD-9-CM and ICD-10-CM codes). Data presented are preliminary and may have slight variations each week.



Maricopa County
Department of Public Health
Epidemiology & Informatics