

September 2023

# 2023 Weekly Heat Report

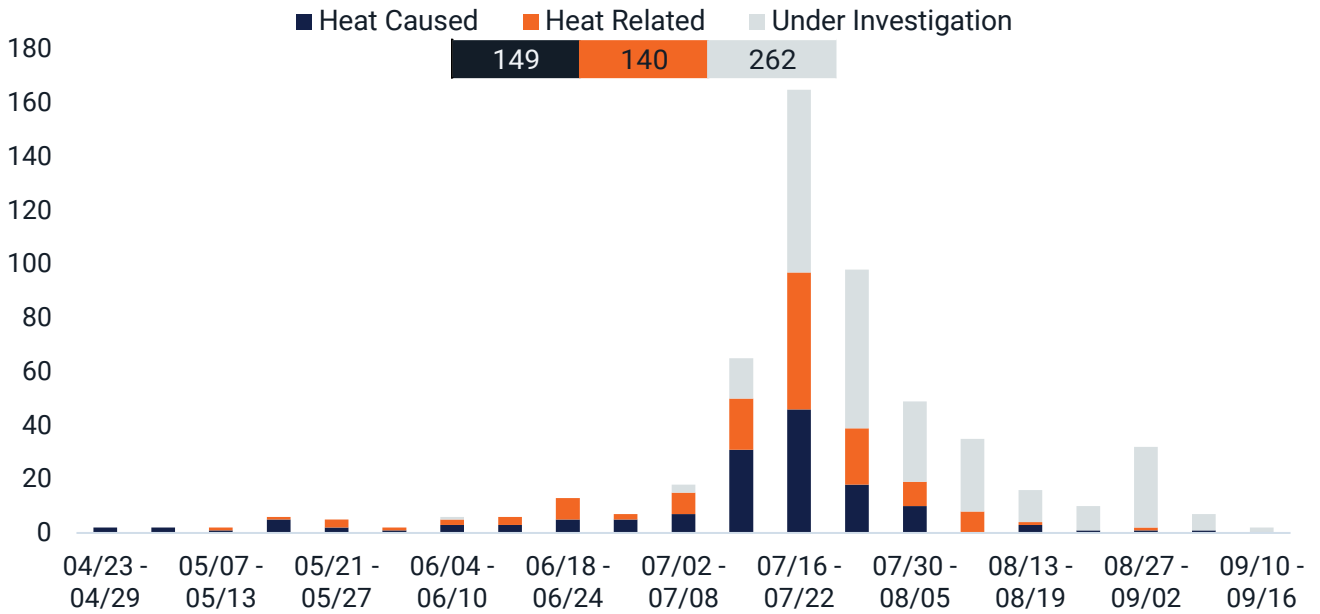
Maricopa County Department of Public Health (MCDPH) conducts weekly heat-associated mortality surveillance. The enhanced heat surveillance season usually begins in May and ends in October. This heat season (2023), there have been a total of **289 confirmed heat-associated deaths**. Cooling and hydration stations in Maricopa County are open to the public throughout the heat season. For more information on heat, please visit <http://heataz.org>.

Maricopa County  
Department of Public Health  
Epidemiology & Informatics

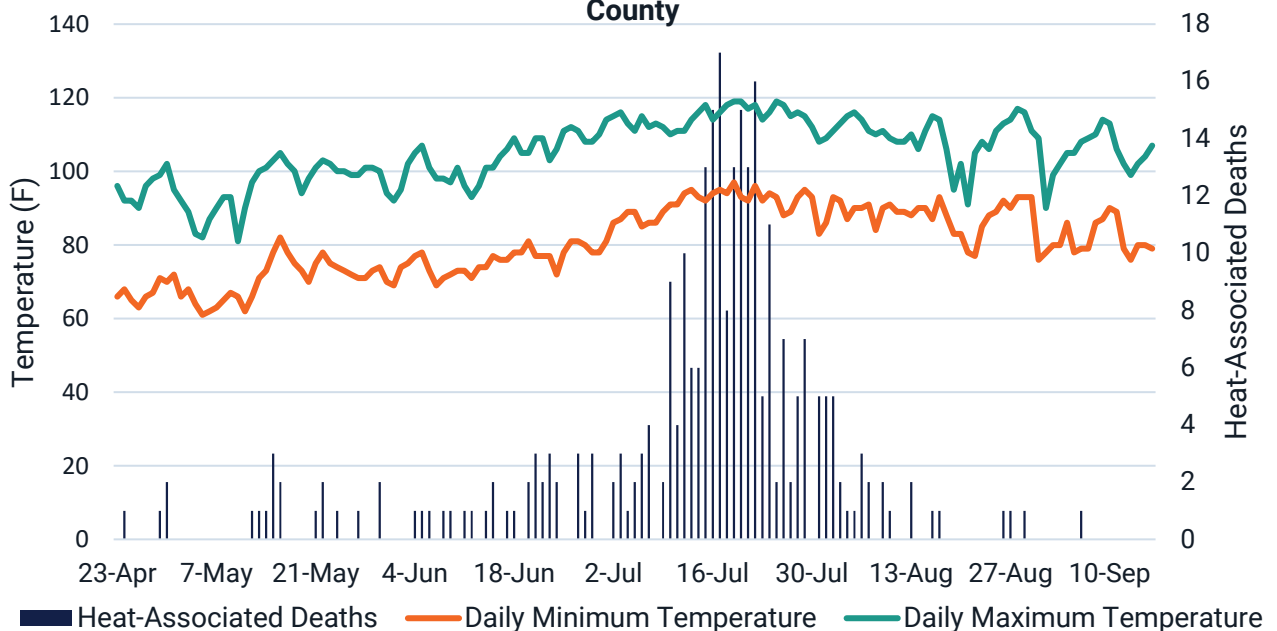
# 2023 Heat Associated Deaths: Week 37 09/10 - 09/16

Year	Confirmed	Under Investigation	First Death
2023 Cumulative Total	289	262	4/11/2023
2022 Cumulative Total	209	216	3/13/2022

**Graph 1. There have been 289 heat-associated deaths in Maricopa County as of 09/22/2023**



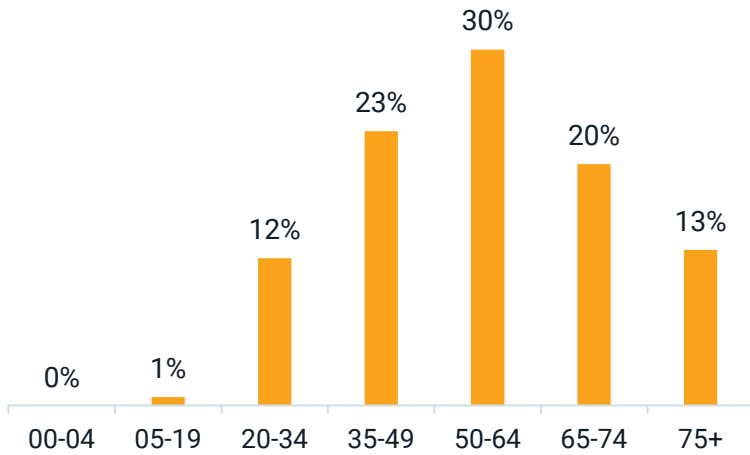
**Graph 2. Heat-associated deaths and environmental temperature in Maricopa County**



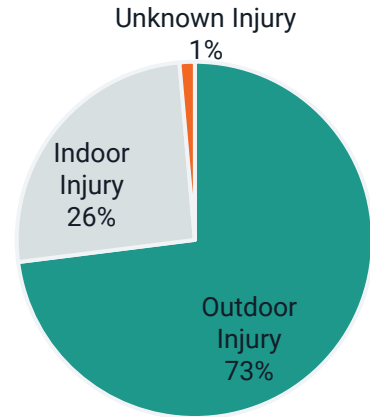
\*One case is heat-caused from January that had an injury that occurred during Summer 2022. One heat related and heat caused death occurred during early April. All under investigation deaths occurred during June-September

# 2023 Heat Associated Deaths: Week 37 09/10 - 09/16

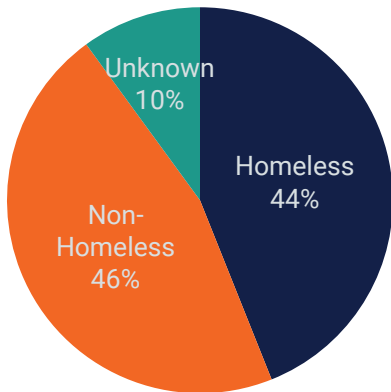
**Graph 3. Heat-associated deaths by age group in Maricopa County**



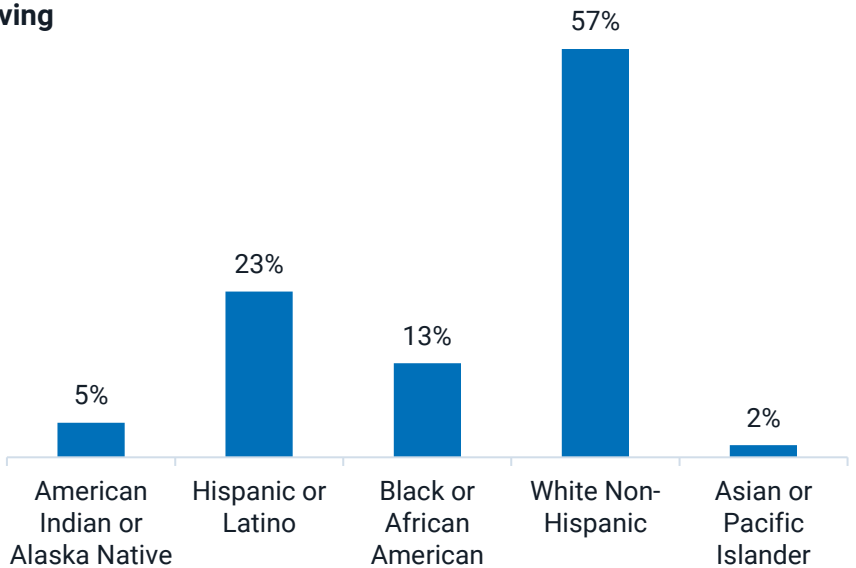
**Graph 4. There have been 74 indoor heat-associated deaths in Maricopa County as of 09/22/2023**



**Graph 5. Heat-associated deaths by living situation in Maricopa County**



**Graph 6. Heat-associated deaths by race and ethnicity in Maricopa County**

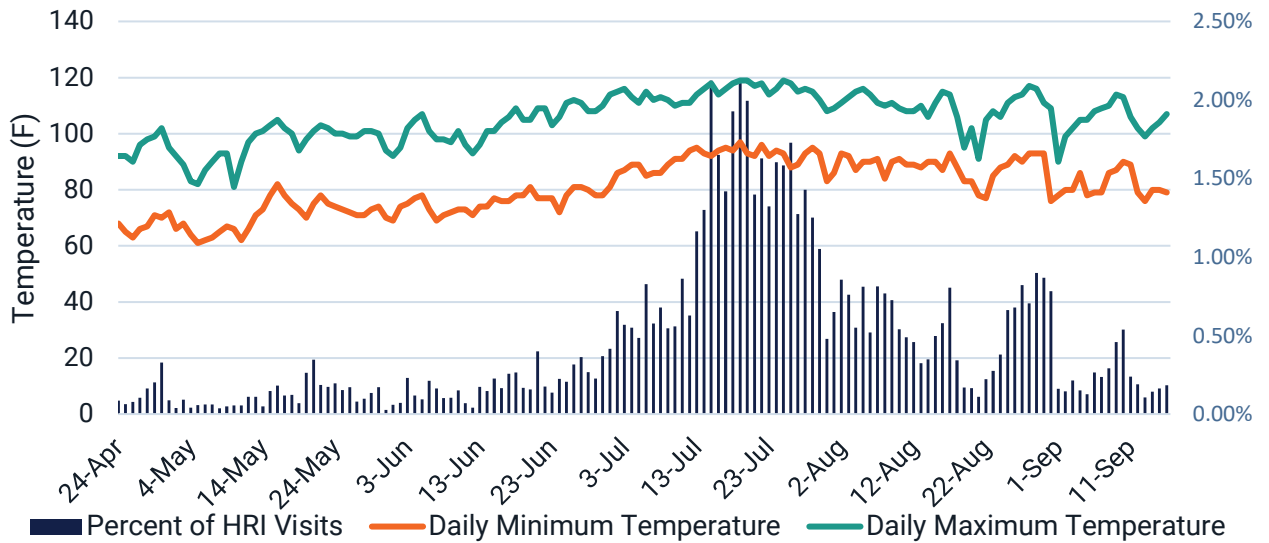


**Table 2. Air conditioning status among heat-associated indoor deaths, Maricopa County 2023**

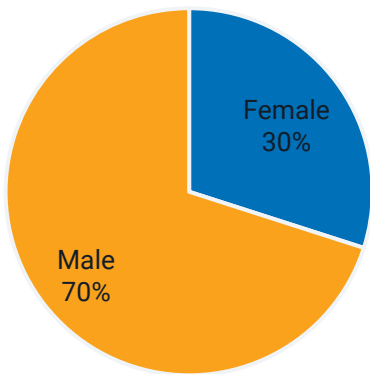
Air Conditioning Status	Count	Percentage
Air Conditioning Present	63	85%
Non-Functioning	52	83%
No Electricity	1	2%
Not in Use	9	14%
Unknown Reason	1	2%
No Air Conditioning Present	10	14%
Unknown if Air Conditioning is Present	1	1%
<b>Total Indoor Deaths</b>	<b>74</b>	<b>100%</b>

# 2023 Heat Associated Hospital Visits: Week 37 09/10 - 09/16

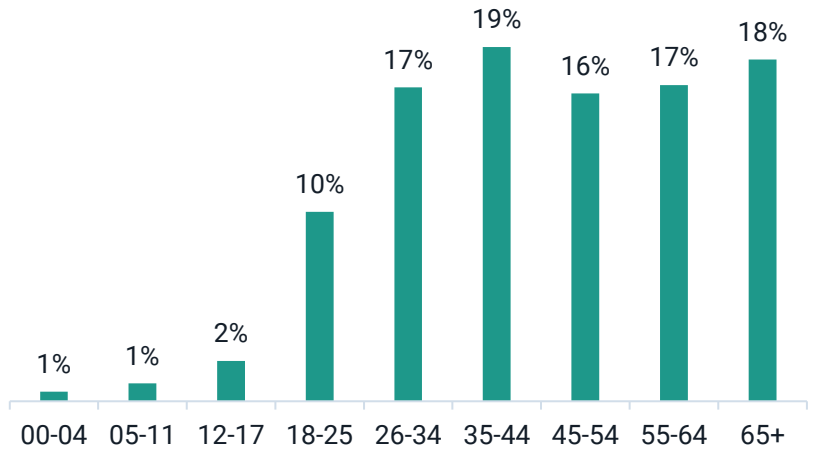
**Graph 7. Heat Related Illness (HRI) Hospital Visits in Maricopa County**



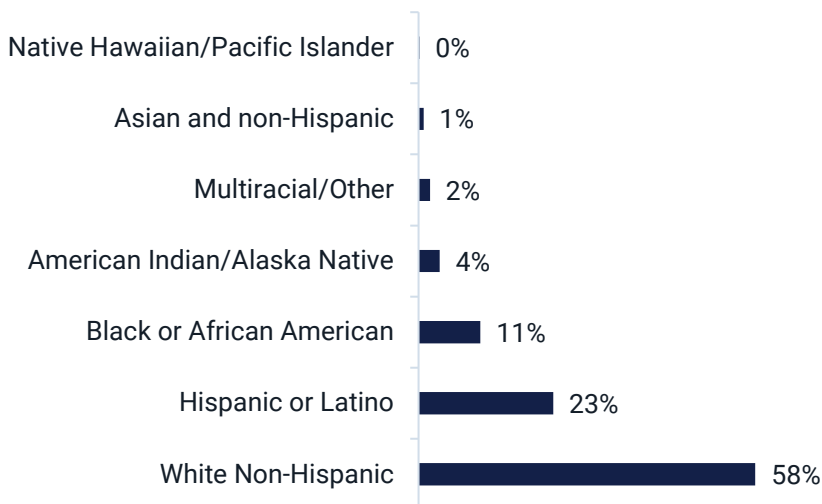
**Graph 8. HRI by Sex**



**Graph 9. HRI Visits by Age Group**



**Graph 10. HRI by Race and Ethnicity**



**Graph 11. HRI Visits Among Individuals Experiencing Homelessness**



## Heat Associated Deaths in Maricopa County

*\*Counts are preliminary and may increase as additional data are received.*

**Heat Caused (HC):** Cases that mention heat or heat exposure in Part I of the death certificate causes of death (diseases or conditions in the direct sequence causing death), for variables cod\_a, cod\_b, cod\_c, or cod\_d. County of death: Maricopa.

**Heat Related (HR):** Cases that mention heat exposure in Part II of the death certificate causes of death (diseases and conditions contributing but not directly resulting in the death sequence), but not in any of the Part I variables (cod\_a, cod\_b, cod\_c, or cod\_d). County of death: Maricopa.

**Under Investigation (UI):** Cases the Maricopa County Office of Medical Examiner suspects are heat associated deaths.

Data Sources: Maricopa County, Office of Vital Registration and Office of Medical Examiner; Arizona Department of Health Services, Office of Vital Registration

## Heat Associated Hospital Visits in Maricopa County

The figures and tables summarize the percentage of emergency department and inpatient hospital visits for individuals experiencing heat-related illnesses (HRI) according to the BioSense data from 15 Maricopa County emergency department and inpatient hospitals. This data includes both Maricopa residents and non-residents. Prior to May 2019, 13 Maricopa County hospitals reported to BioSense. Included are daily maximum and minimum temperatures as well as selected demographics. The BioSense Platform ESSENCE tool locates heat-related illness visits by identifying key terms and codes within the chief complaint field (i.e., the patient's stated reason for visit), admission reason field (i.e., the provider's noted reason for admission), and discharge diagnosis code field (i.e., ICD-9-CM and ICD-10-CM codes). Data presented are preliminary and may have slight variations each week.



Maricopa County  
Department of Public Health  
Epidemiology & Informatics