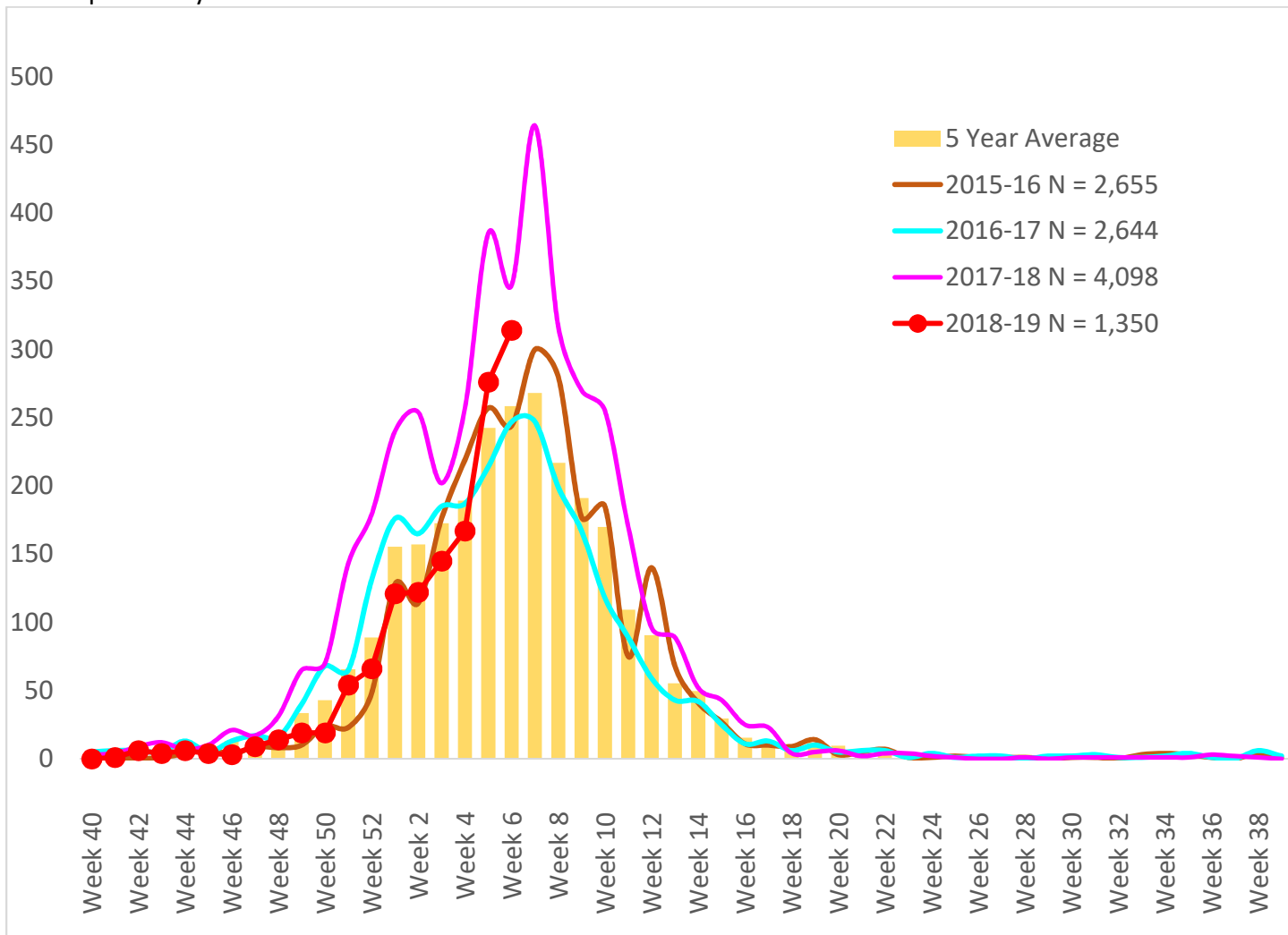




Maricopa County Department of Public Health RSV Update 2018-2019 Season Week 6

Respiratory Syncytial Virus (RSV)

The 2018-2019 RSV season starts on 9/30/2018 (week 40 of 2018) and continues through 9/28/2019 (week 39 of 2019). Through week 6 of 2019 (2/3/2019 – 2/9/2019), **1,350** RSV cases have been laboratory confirmed in Maricopa County.



| | Cumulative Season Total | Current Week Total |
|---|-------------------------|--------------------|
| 2018-2019 | 1,350 | 314 |
| 2017-2018 | 2,256 | 347 |
| 5 Season Average (2013-2018) | 1,502 | 258 |
| % difference compared to 2017-2018 season | -40% | -10% |
| % difference compared to 5 season average | -10% | 22% |
| % difference compared to last week | 30% | 14% |



Maricopa County Department of Public Health
RSV Update
2018-2019 Season
Week 6

Those less than one year of age are most affected by RSV.

| Age Group | Cases | Cases per 100,000 population |
|-------------|-------|------------------------------|
| Age <1 | 591 | 1088 |
| Age 1 - 4 | 421 | 184 |
| Age 5 - 17 | 63 | 9 |
| Age 18 - 64 | 140 | 6 |
| Age 65 + | 135 | 29 |

All data are preliminary and may change as more reports are received.

**The Maricopa County Department of Public Health wishes to thank all of the
 Influenza surveillance participants:**

Arizona Department of Health Services

Local Hospital Emergency Departments & Infection Control Practitioners

Local Outpatient Facilities and Medical Directors

Maricopa County Public Schools

Maricopa County Office of Vital Statistics

Questions about this report may be directed to:

epidemiology@mail.maricopa.gov

**Information on influenza activity for the state, the U.S. and the world may be found
 at the following websites:**

<http://www.azdhs.gov/phs/oids/epi/flu/index.htm> (ADHS)

<https://www.cdc.gov/flu/weekly/fluactivitysurv.htm> (CDC)

http://www.who.int/influenza/gisrs_laboratory/updates/en/index.html (WHO)