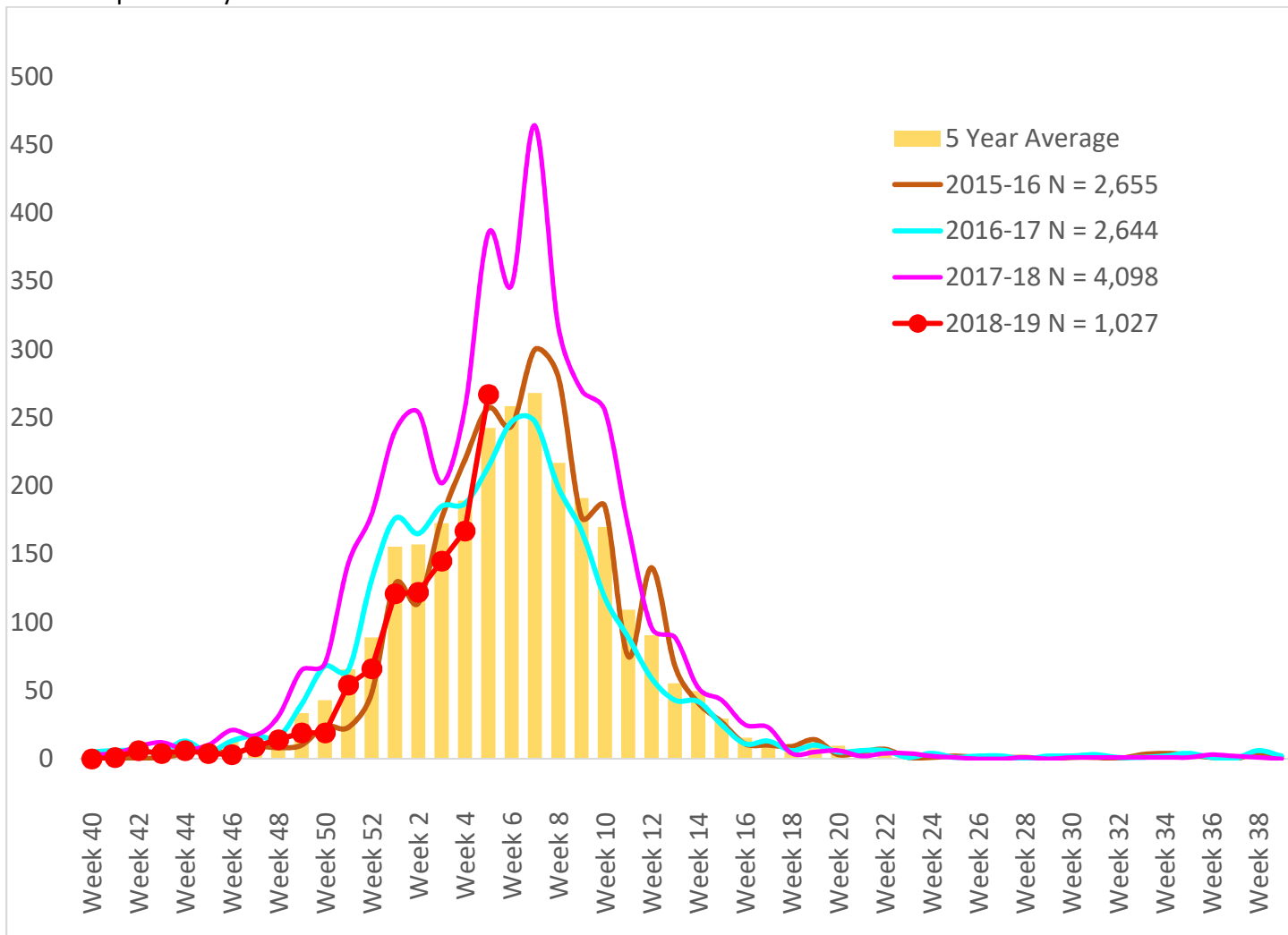




## Maricopa County Department of Public Health RSV Update 2018-2019 Season Week 5

### Respiratory Syncytial Virus (RSV)

The 2018-2019 RSV season starts on 9/30/2018 (week 40 of 2018) and continues through 9/28/2019 (week 39 of 2019). Through week 5 of 2019 (1/27/2019 – 2/2/2019), **1,027** RSV cases have been laboratory confirmed in Maricopa County.



	Cumulative Season Total	Current Week Total
2018-2019	1,027	267
2017-2018	1,909	385
5 Season Average (2013-2018)	1,244	243
% difference compared to 2017-2018 season	-46%	-31%
% difference compared to 5 season average	-17%	10%
% difference compared to last week	35%	60%



**Maricopa County Department of Public Health**  
**RSV Update**  
**2018-2019 Season**  
**Week 5**

Those less than one year of age are most affected by RSV

Age Group	Cases	Cases per 100,000 population
Age <1	445	820
Age 1 - 4	317	139
Age 5 - 17	49	7
Age 18 - 64	105	4
Age 65 +	111	24

*All data are preliminary and may change as more reports are received.*

**The Maricopa County Department of Public Health wishes to thank all of the  
 Influenza surveillance participants:**

*Arizona Department of Health Services*

*Local Hospital Emergency Departments & Infection Control Practitioners*

*Local Outpatient Facilities and Medical Directors*

*Maricopa County Public Schools*

*Maricopa County Office of Vital Statistics*

**Questions about this report may be directed to:**

**[epidemiology@mail.maricopa.gov](mailto:epidemiology@mail.maricopa.gov)**

**Information on influenza activity for the state, the U.S. and the world may be found  
 at the following websites:**

<http://www.azdhs.gov/phs/oids/epi/flu/index.htm> (ADHS)

<https://www.cdc.gov/flu/weekly/fluactivitysurv.htm> (CDC)

[http://www.who.int/influenza/gisrs\\_laboratory/updates/en/index.html](http://www.who.int/influenza/gisrs_laboratory/updates/en/index.html) (WHO)