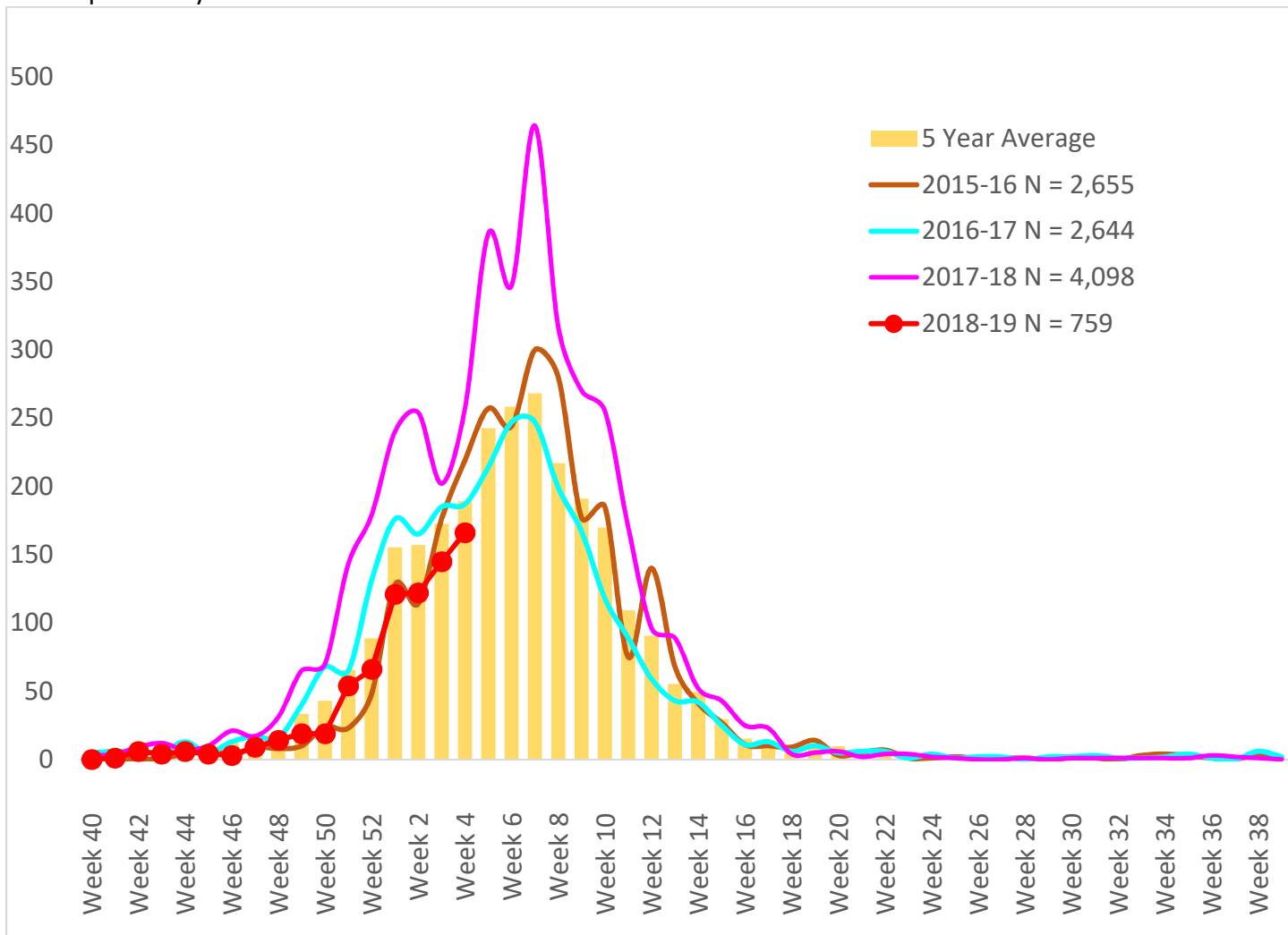




Maricopa County Department of Public Health RSV Update 2018-2019 Season Week 4

Respiratory Syncytial Virus (RSV)

The 2018-2019 RSV season starts on 9/30/2018 (week 40 of 2018) and continues through 9/28/2019 (week 39 of 2019). Through week 4 of 2019 (1/20/2019 – 1/26/2019), **759** RSV cases have been laboratory confirmed in Maricopa County.



	Cumulative Season Total	Current Week Total
2018-2019	759	166
2017-2018	1,524	257
5 Season Average (2013-2018)	1,001	189
% difference compared to 2017-2018 season	-50%	-35%
% difference compared to 5 season average	-24%	-12%
% difference compared to last week	28%	14%



Maricopa County Department of Public Health
RSV Update
2018-2019 Season
Week 4

Those less than one year of age are most affected by RSV.

Age Group	Cases	Cases per 100,000 population
Age <1	338	622
Age 1 - 4	236	103
Age 5 - 17	33	5
Age 18 - 64	68	3
Age 65 +	84	18

All data are preliminary and may change as more reports are received.

**The Maricopa County Department of Public Health wishes to thank all of the
 Influenza surveillance participants:**

Arizona Department of Health Services

Local Hospital Emergency Departments & Infection Control Practitioners

Local Outpatient Facilities and Medical Directors

Maricopa County Public Schools

Maricopa County Office of Vital Statistics

Questions about this report may be directed to:

epidemiology@mail.maricopa.gov

**Information on influenza activity for the state, the U.S. and the world may be found
 at the following websites:**

<http://www.azdhs.gov/phs/oids/epi/flu/index.htm> (ADHS)

<https://www.cdc.gov/flu/weekly/fluactivitysurv.htm> (CDC)

http://www.who.int/influenza/gisrs_laboratory/updates/en/index.html (WHO)