



Maricopa County Department of Public Health WEEKLY INFLUENZA UPDATE 2018-2019 Season (09/30/2018-09/28/2019)

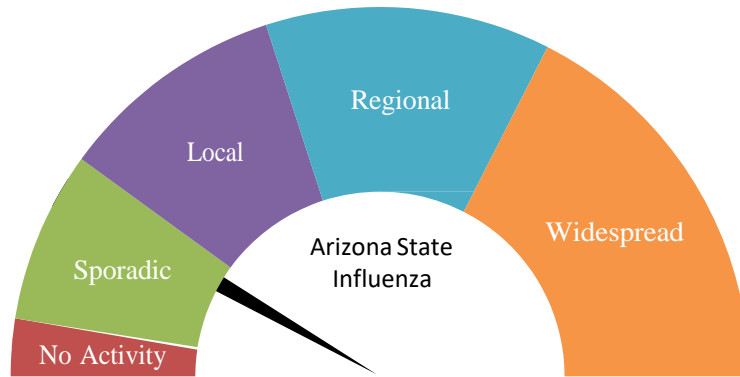
November 27, 2018

2018-2019 Week 40 (09/30/2018 – 10/06/2018)

The Influenza Season is defined by CDC MMWR surveillance weeks, beginning week 40 (September or October) and continues through week 39 (the following September).

The first official day of the 2018-2019 Influenza Season was September 30, 2018 and the surveillance season will continue through September 28, 2019. Maricopa County identified its first locally-acquired influenza case of the 2018 - 19 season in week 40.

- Since September 30, 2018, 22 cases have been laboratory-confirmed.
- All ILI (Influenza like Illness) indicators remained low this week.
- Maricopa County reports zero Pediatric Influenza Deaths so far this season.



Influenza Surveillance Indicators

- [Lab Confirmed Cases](#)
- [Hospital Emergency Visits](#)
- [Outpatient Clinics](#)
- [School Absenteeism](#)

Influenza Activity	2018-2019	2017-2018	2016-2017	2015-2016
First Confirmed Case (no travel)	9/30/2018	10/16/2017	10/3/2016	10/4/2015
Weeks w/Widespread Activity (AZ)	0	Weeks 50 - 10	Week 6 - 9	Week 5 - 14
Weeks w/Hospital ILI above Regional Threshold	0	Weeks 41, 43, 45 - 15, 17-18	Week 49, 52 & 1-23	Week 51 - 16
Weeks w/Outpatient visits above Threshold	0	Weeks 47 - 15, 17-18 & 22	Weeks 47, 48, 50-52, 1-3, 5-10, 14 & 17-21	Weeks 45-52, 1-21, 23, 35 & 36
Peak Week		Week 1 (12/31-1/6/2018)	Week 6 (2/5-2-11/2016)	Week 8 (2/21-2/27/2016)
Pediatric Deaths	0	3	1	3
Total Cases	22	19,582	6,633	14,318

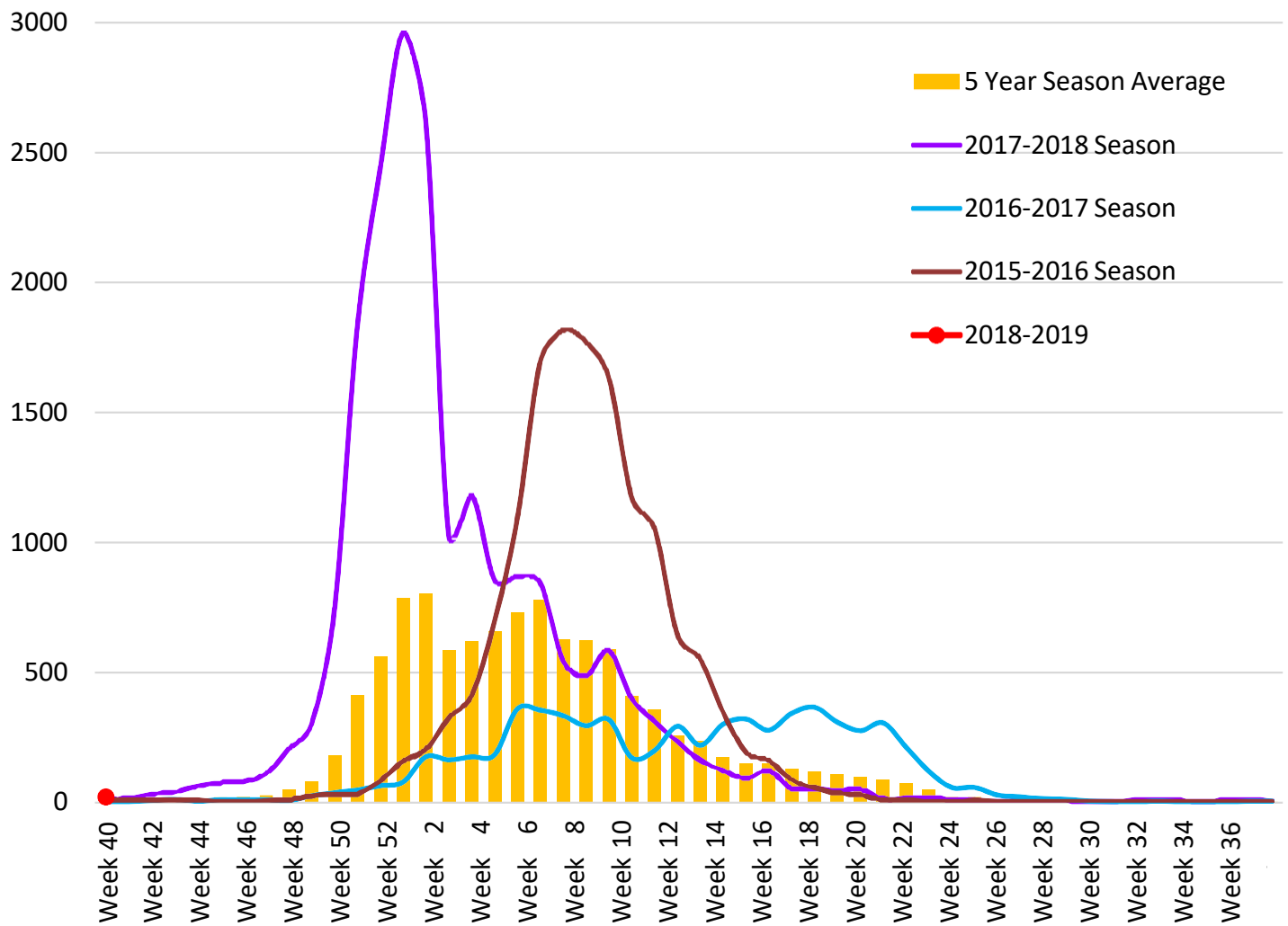


www.FluNearYou.org

Individuals with Laboratory Confirmed Influenza

Table 1. Laboratory-Confirmed Influenza Cases Compared to Last Week and Last Season, Maricopa County	Cumulative Season Total	Current Week Total
2018-2019 Season	22	22
2017-2018 Season	12	12
5 Season Average (2013-2018)	4	4
% change compared to 2017-2018 Season	83%	83%
% change compared to 5 season average	450%	450%
% change compared to last week	N/A	450%

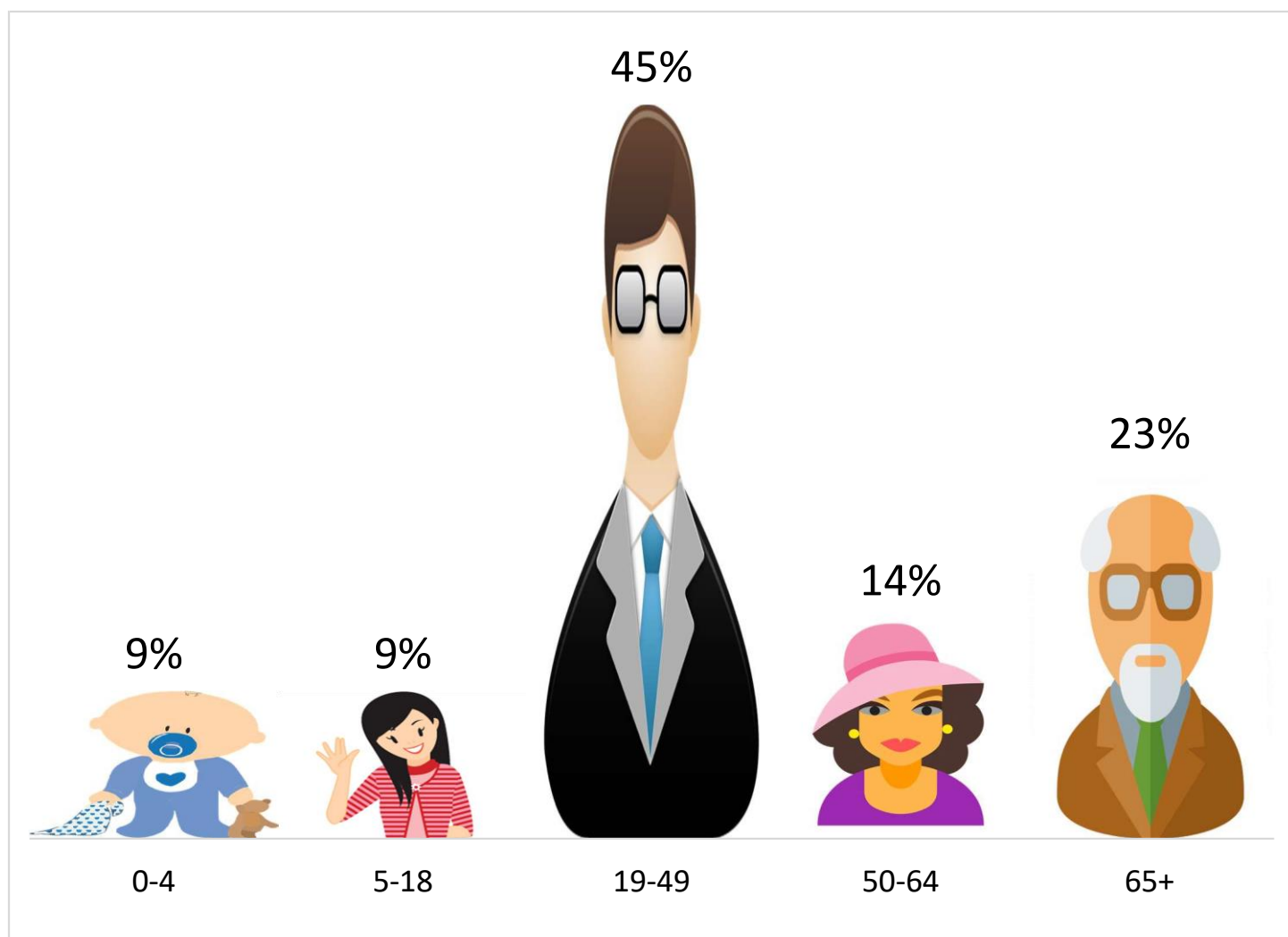
Trends of influenza laboratory test results compared to the previous 3 seasons. The current season is in red.



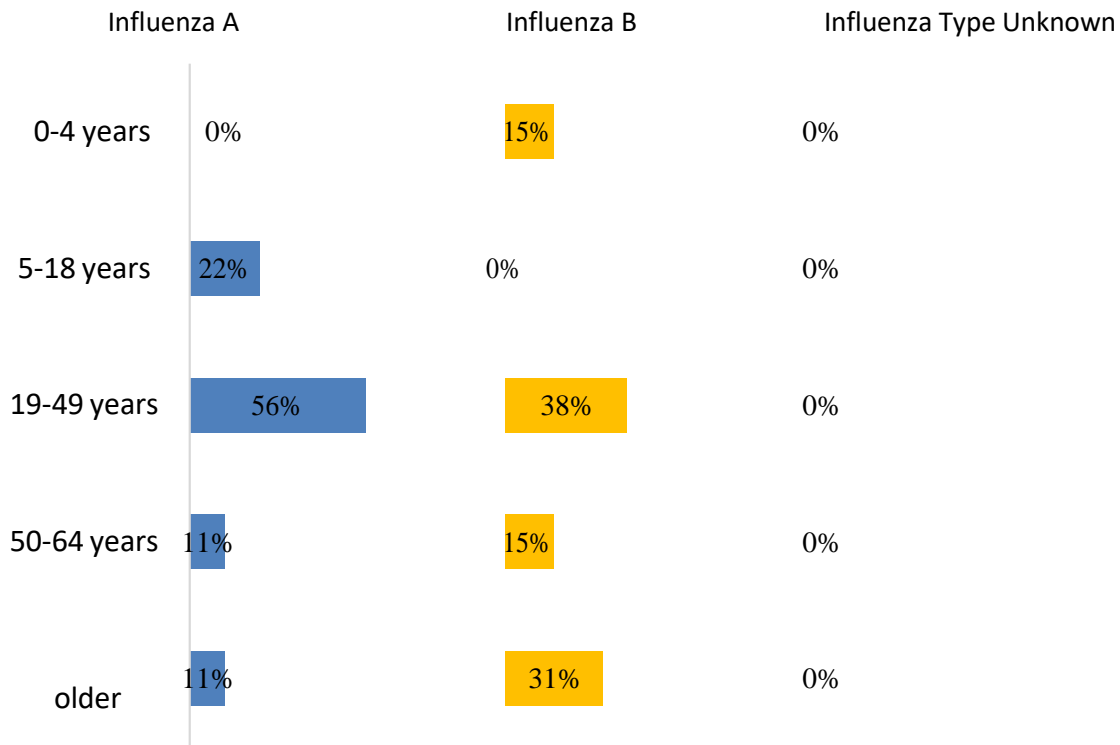
Types of Influenza in Maricopa County

Types/Subtypes	Count	Percentage
Type A	9	41%
Subtype 2009 H1N1	1	11%
Subtype H3	0	0%
Subtyping not performed or unknown	8	89%
Type B	13	59%
Unknown	0	0%
Total	22	100%

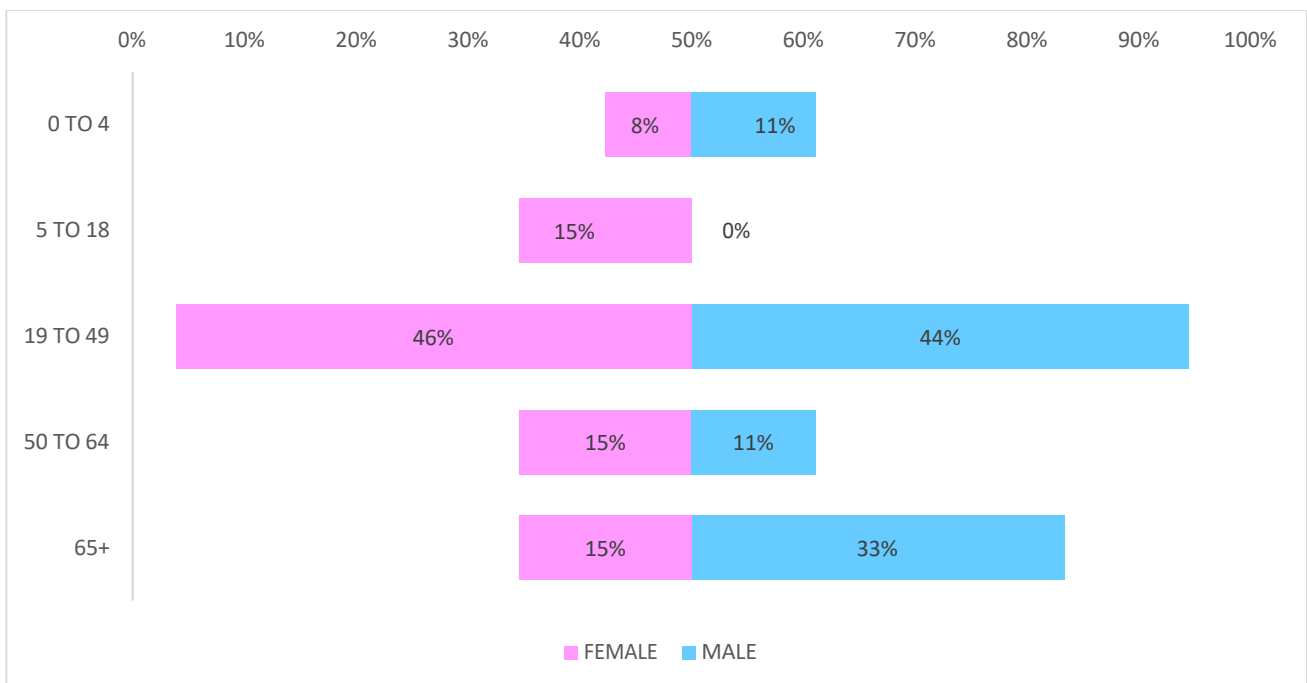
Confirmed Influenza Percentages by Age Group



Confirmed Influenza Cases by Type and Age Group



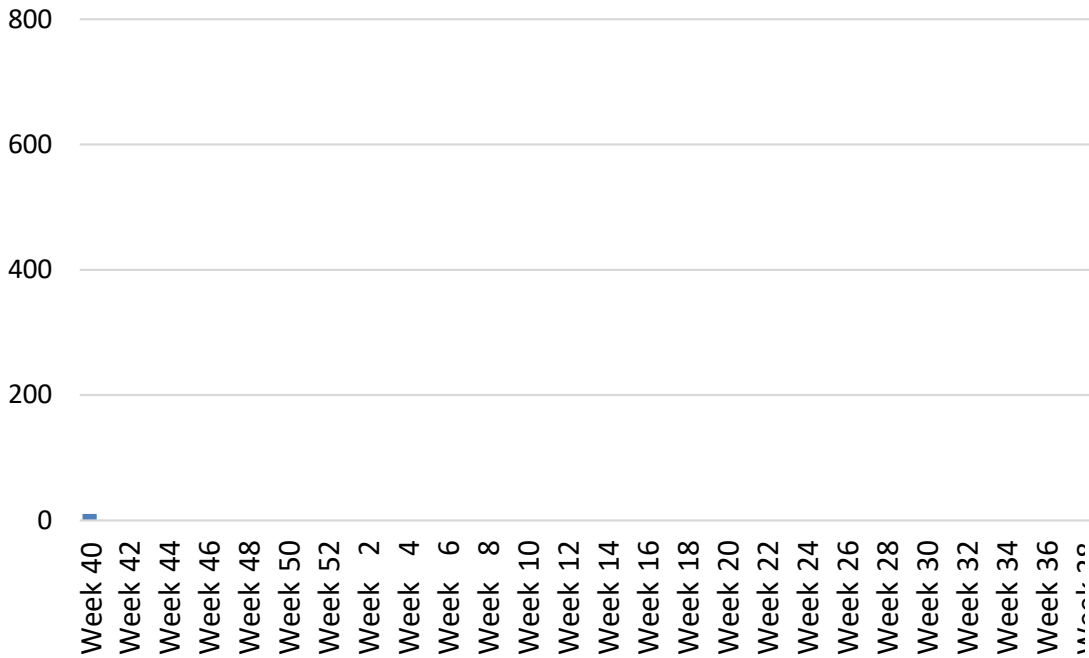
Confirmed Influenza Cases by Age-Group and Gender



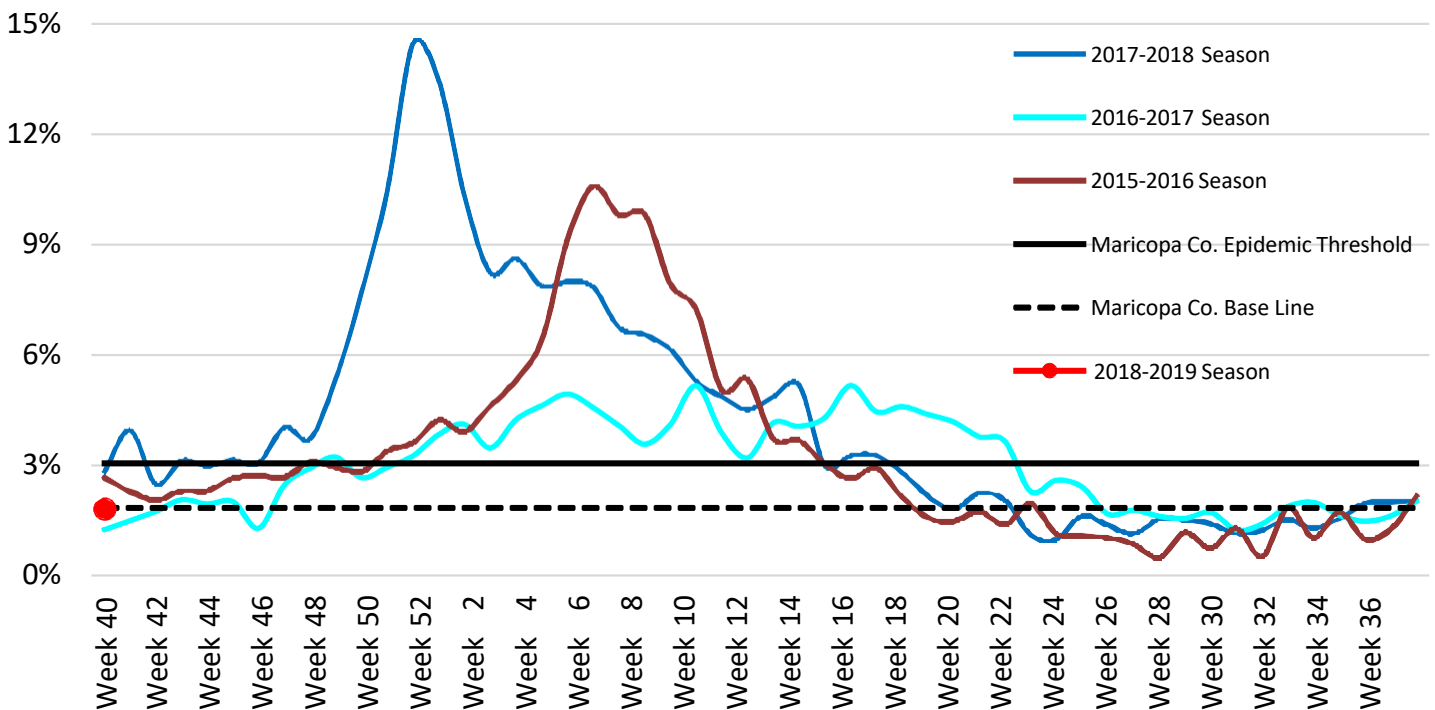
Influenza-Like Illness Activity at Hospital Emergency Departments

Among hospitals that have reported, there have been 10 visits to emergency departments by individuals with flu-like symptoms this influenza season. To be counted as an individual with flu-like symptoms, the patient must have both fever and cough/sore throat.

This graph shows the number of patients with flu-like symptoms seen at 12 emergency departments.

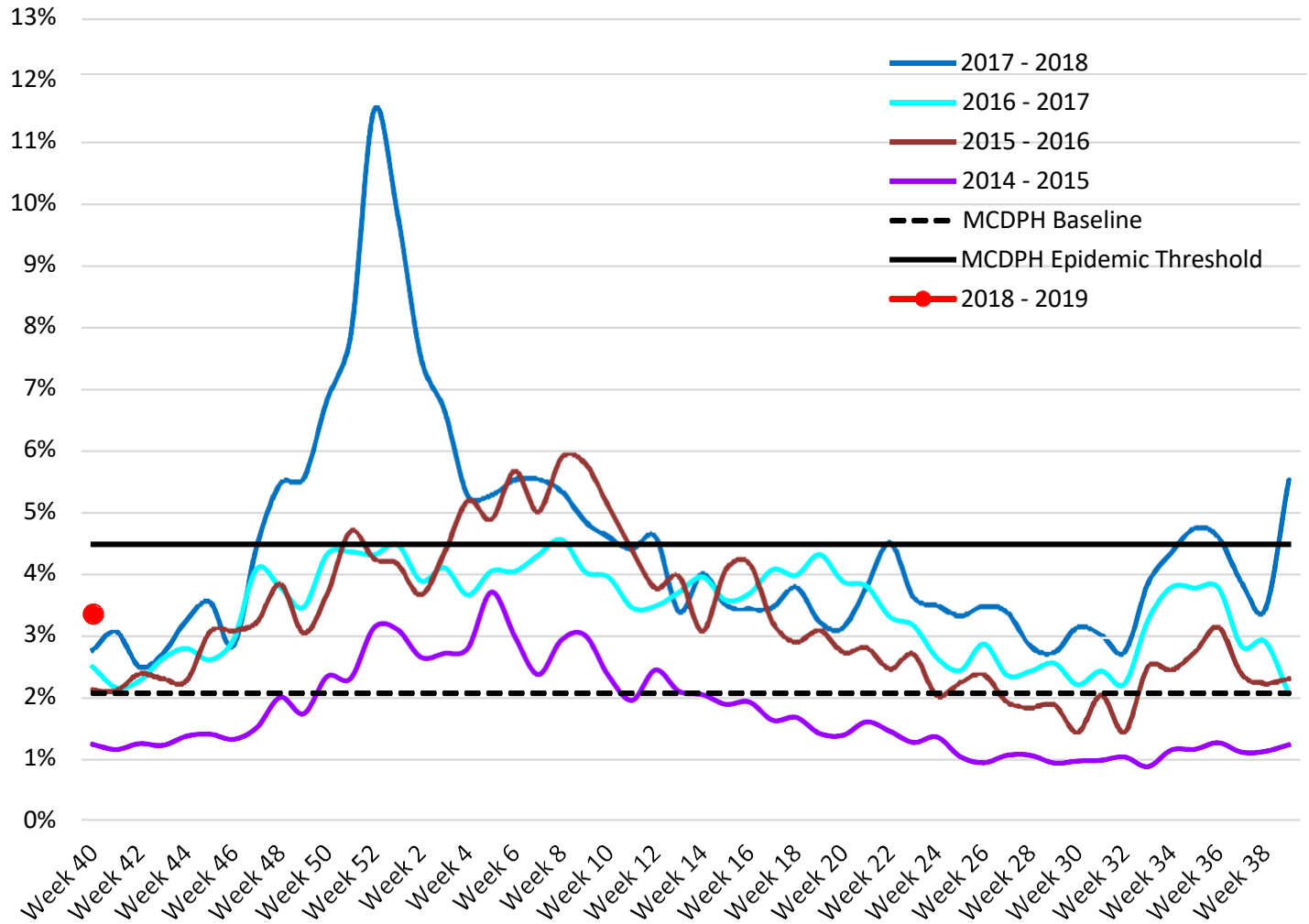


This graph compares what percent of all emergency department visits were individuals with flu-like symptoms (fever and cough/sore throat). The graph shows the trend week by week, with the current season in red.



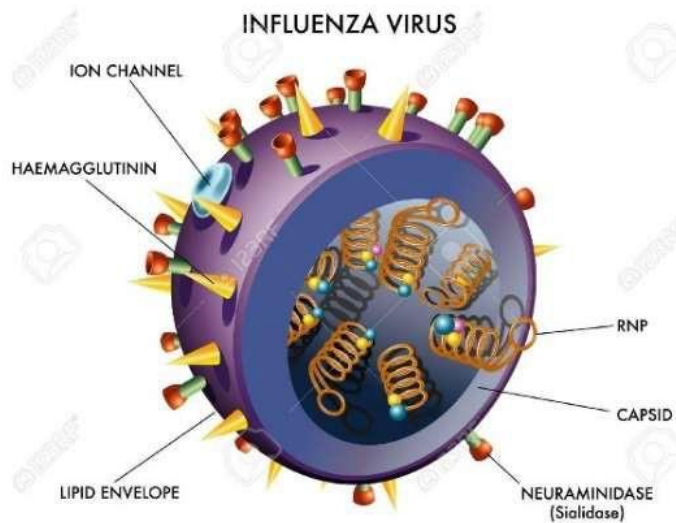
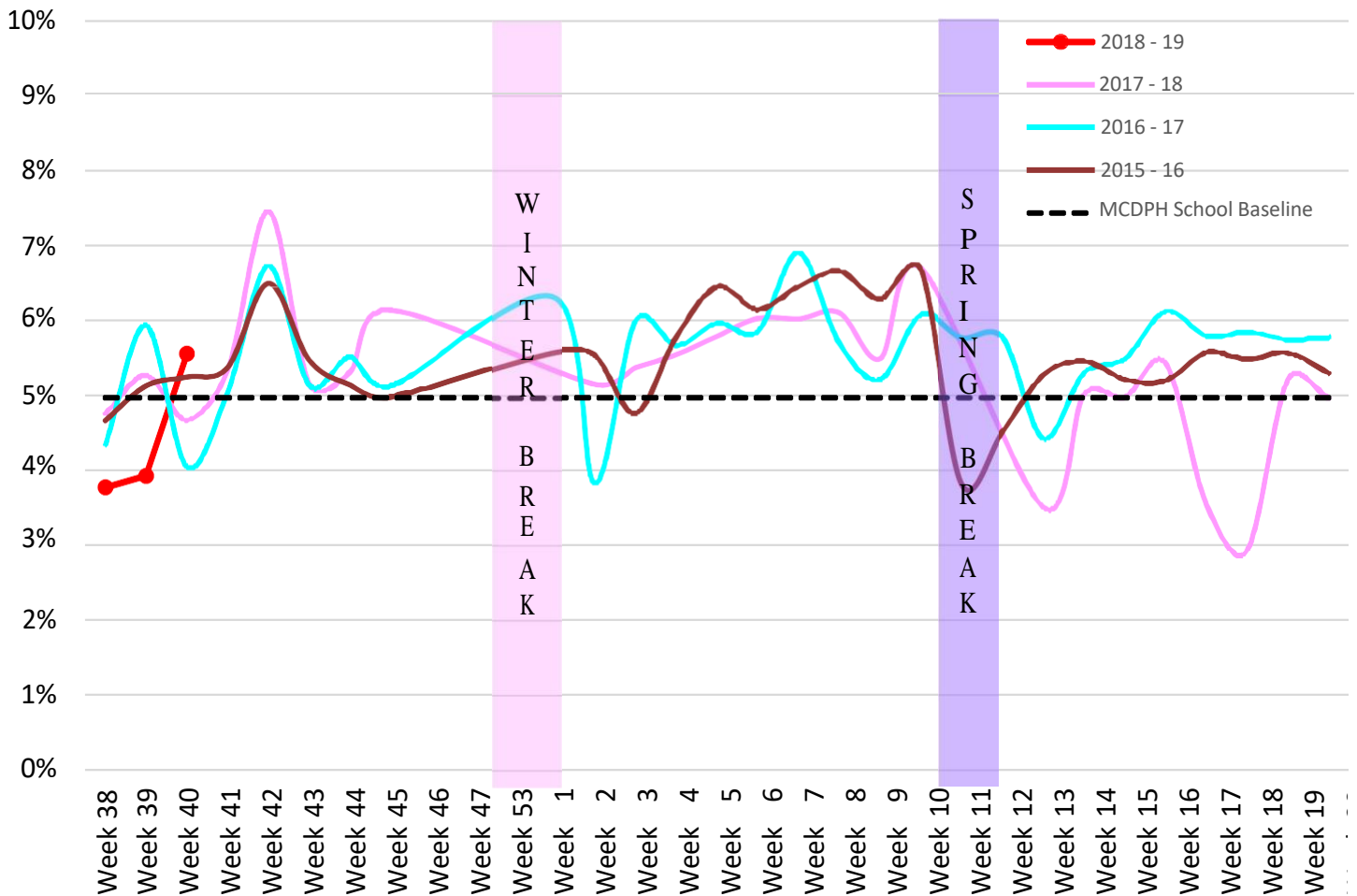
Influenza-Like Illness Activity at Sentinel Site Outpatient Facilities Reported to the Centers for Disease Control and Prevention (CDC)

Maricopa County sentinel sites (outpatient facilities) report visits due to flu-like symptoms. This week, visits due to flu-like symptoms represented 3.36% of visits at outpatient facilities.



Absentee Activity at Schools

Absenteeism trends compared to the last three school years show the percent of students reported absent and illustrates the week by week trend. The current school year is in red.





Why register for Flu Near You?

Flu Near You is a participatory surveillance platform managed by the CDC. Registered users have access to many features, such as:

- The ability to report their symptoms
- A map that displays where users can find vaccines in their area
- A map of flu activity in their area and across the nation
- Updated news on the current flu season, flu shots, treatment, recovery time, and more

Everyone is invited to participate in Flu Near You by enrolling at <https://flunearyou.org>

The Maricopa County Department of Public Health wishes to thank all of the Influenza surveillance participants:

Arizona Department of Health Services

Local Hospital Emergency Departments & Infection Control Practitioners

Local Outpatient Facilities and Medical Directors

Maricopa County Public Schools

Maricopa County Office of Vital Statistics

Questions about this report may be directed to:

epidemiology@mail.maricopa.gov

Information on influenza activity for the state, the U.S. and the world may be found at the following websites:

<http://www.azdhs.gov/phs/oids/epi/flu/index.htm> (ADHS)

<https://www.cdc.gov/flu/weekly/fluactivitysurv.htm> (CDC)

http://www.who.int/influenza/gisrs_laboratory/updates/en/index.html (WHO)