



# Maricopa County Department of Public Health

## WEEKLY INFLUENZA UPDATE

### 2018-2019 Season (09/30/2018-09/28/2019)

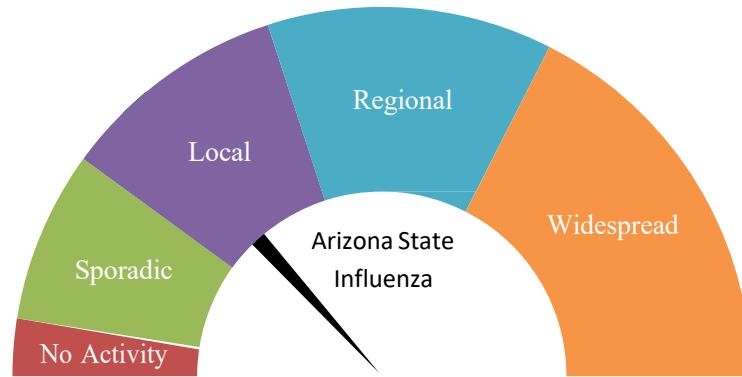
November 28, 2018

2018-2019 Week 45 (11/04/2018 – 11/10/2018)

The Influenza Season is defined by CDC MMWR surveillance weeks, beginning week 40 (September or October) and continues through week 39 (the following September).

The first official day of the 2018-2019 Influenza Season was September 30, 2018 and the surveillance season will continue through September 28, 2019. Maricopa County identified its first locally-acquired influenza case of the 2018 - 19 season in week 40.

- Since September 30, 2018, 150 cases have been laboratory-confirmed.
- All ILI (Influenza like Illness) indicators remained low this week.
- Maricopa County reports zero Pediatric Influenza Deaths so far this season.



#### Influenza Surveillance Indicators

- Lab Confirmed Cases
- Hospital Emergency Visits
- Outpatient Clinics
- School Absenteeism

Influenza Activity	2018-2019	2017-2018	2016-2017	2015-2016
First Confirmed Case (no travel)	9/30/2018	10/16/2017	10/3/2016	10/4/2015
Weeks w/Widespread Activity (AZ)	0	Weeks 50 - 10	Week 6 - 9	Week 5 - 14
Weeks w/Hospital ILI above Regional Threshold	0	Weeks 41, 43, 45 - 15, 17-18	Week 49, 52 & 1-23	Week 51 - 16
Weeks w/Outpatient visits above Threshold	0	Weeks 47 - 15, 17-18 & 22	Weeks 47, 48, 50-52, 1-3, 5-10, 14 & 17-21	Weeks 45-52, 1-21, 23, 35 & 36
Peak Week		Week 1 (12/31-1/6/2018)	Week 6 (2/5-2-11/2016)	Week 8 (2/21-2/27/2016)
Pediatric Deaths	0	3	1	3
Total Cases	150	19,582	6,633	14,318

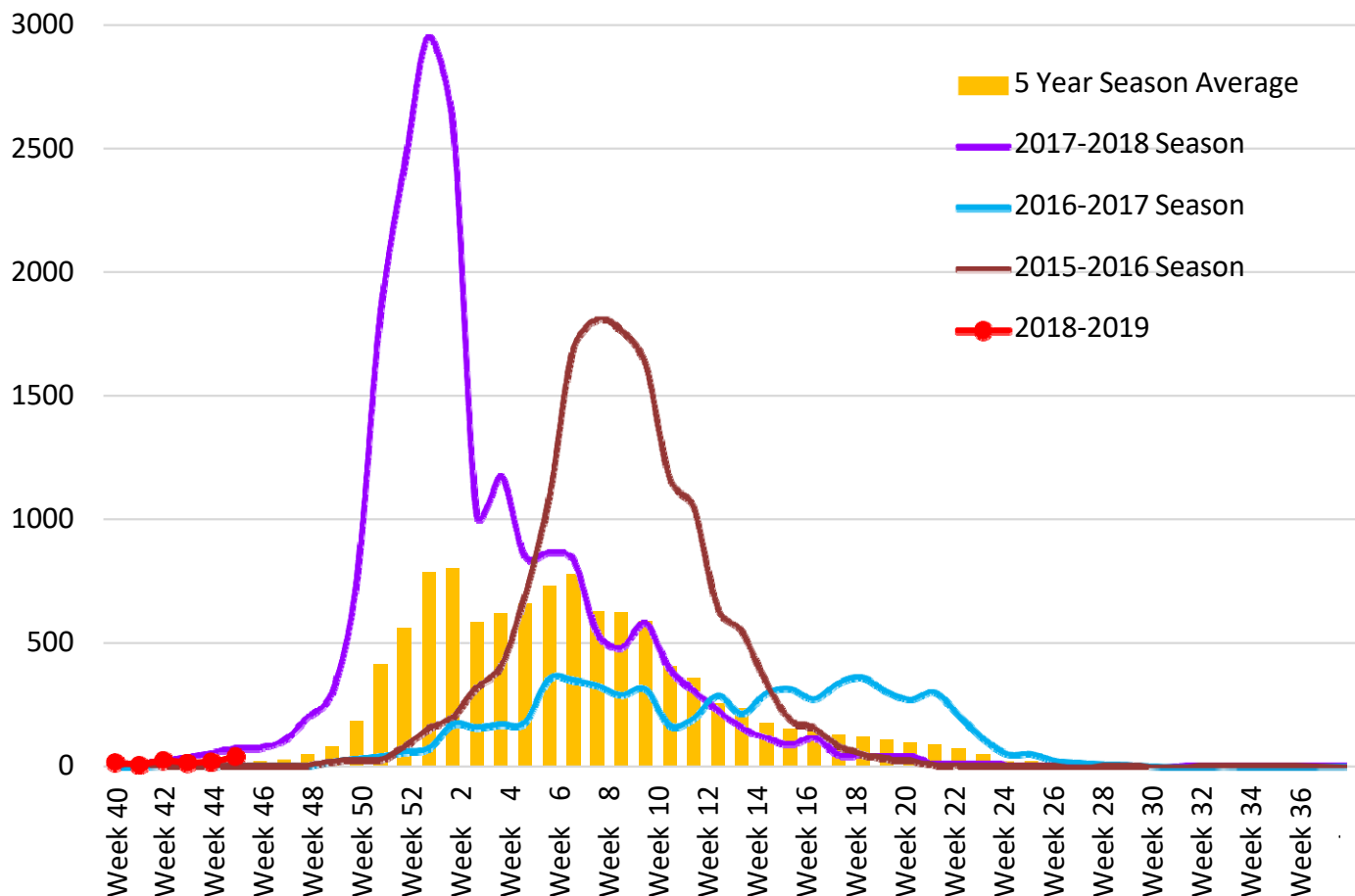


[www.FluNearYou.org](http://www.FluNearYou.org)

## Individuals with Laboratory Confirmed Influenza

Table 1. Laboratory-Confirmed Influenza Cases Compared to Last Week and Last Season, Maricopa County	Cumulative Season Total	Current Week Total
2018-2019 Season	150	43
2017-2018 Season	225	73
5 Season Average (2013-2018)	65	20
% change compared to 2017-2018 Season	-33%	-41%
% change compared to 5 season average	131%	115%
% change compared to last week	40%	79%

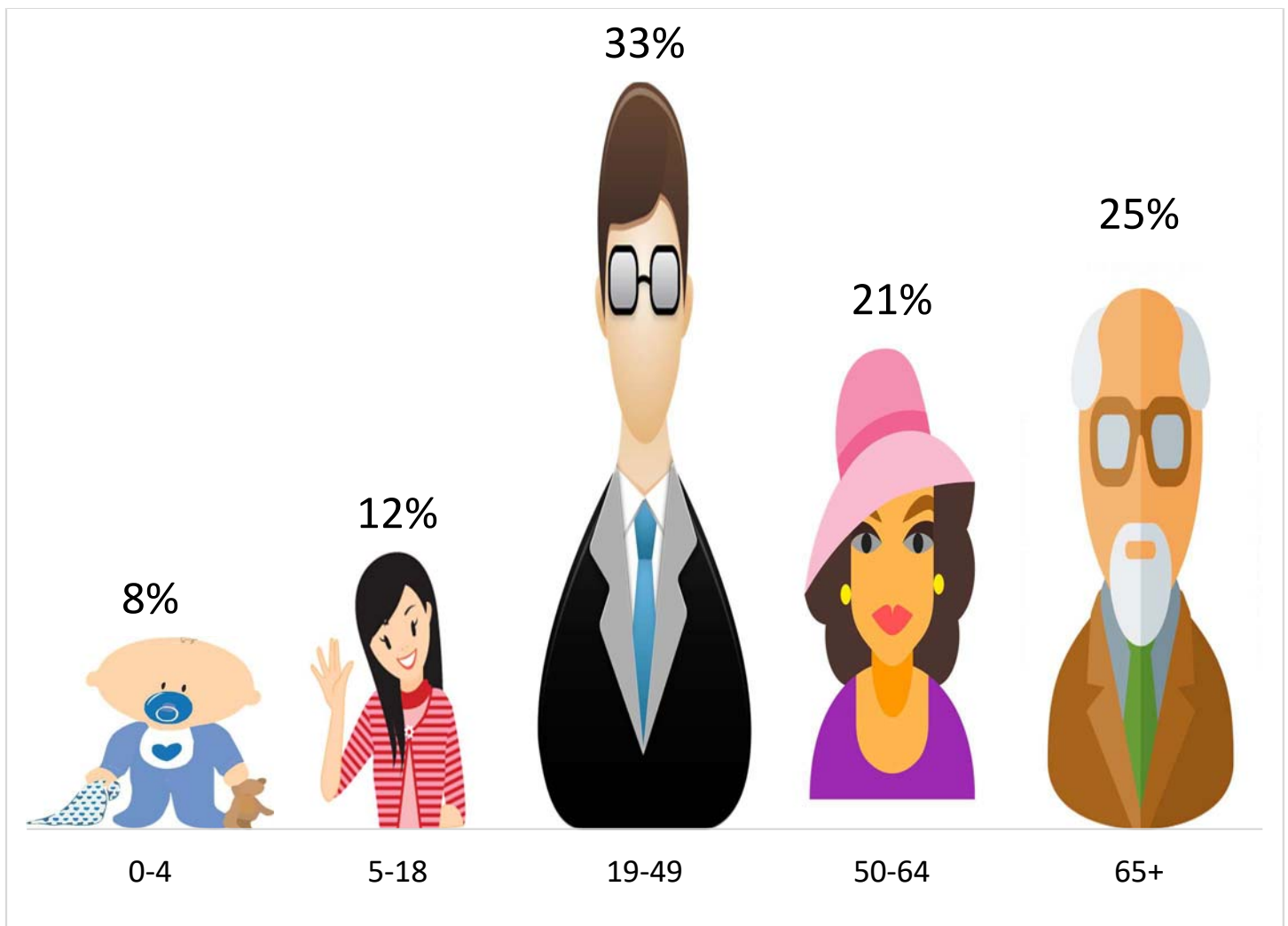
Trends of influenza laboratory test results compared to the previous 3 seasons. The current season is in red.



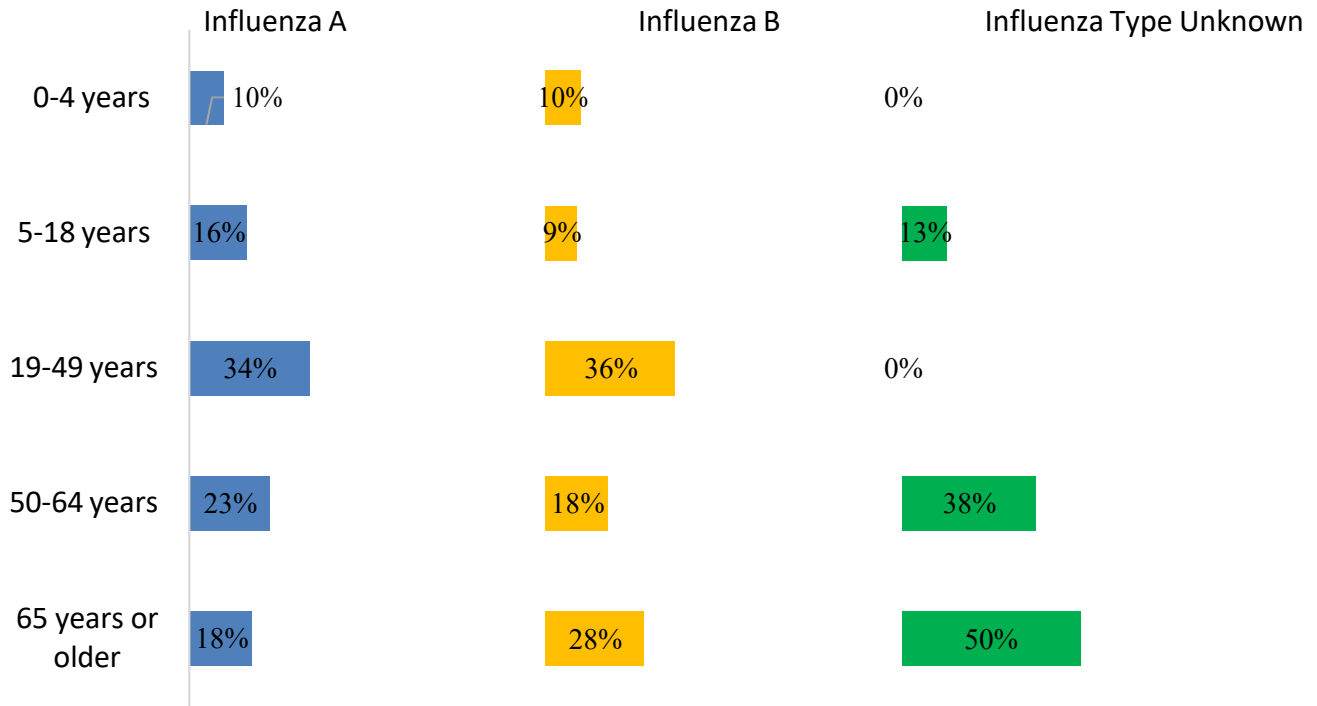
## Types of Influenza in Maricopa County

Table 2. Influenza 2017-18 Season		
Types/Subtypes	Count	Percentage
Type A	62	41%
Subtype 2009 H1N1	8	13%
Subtype H3	3	5%
Subtyping not performed or unknown	51	82%
Type B	80	53%
Unknown	8	5%
<b>Total</b>	<b>150</b>	<b>100%</b>

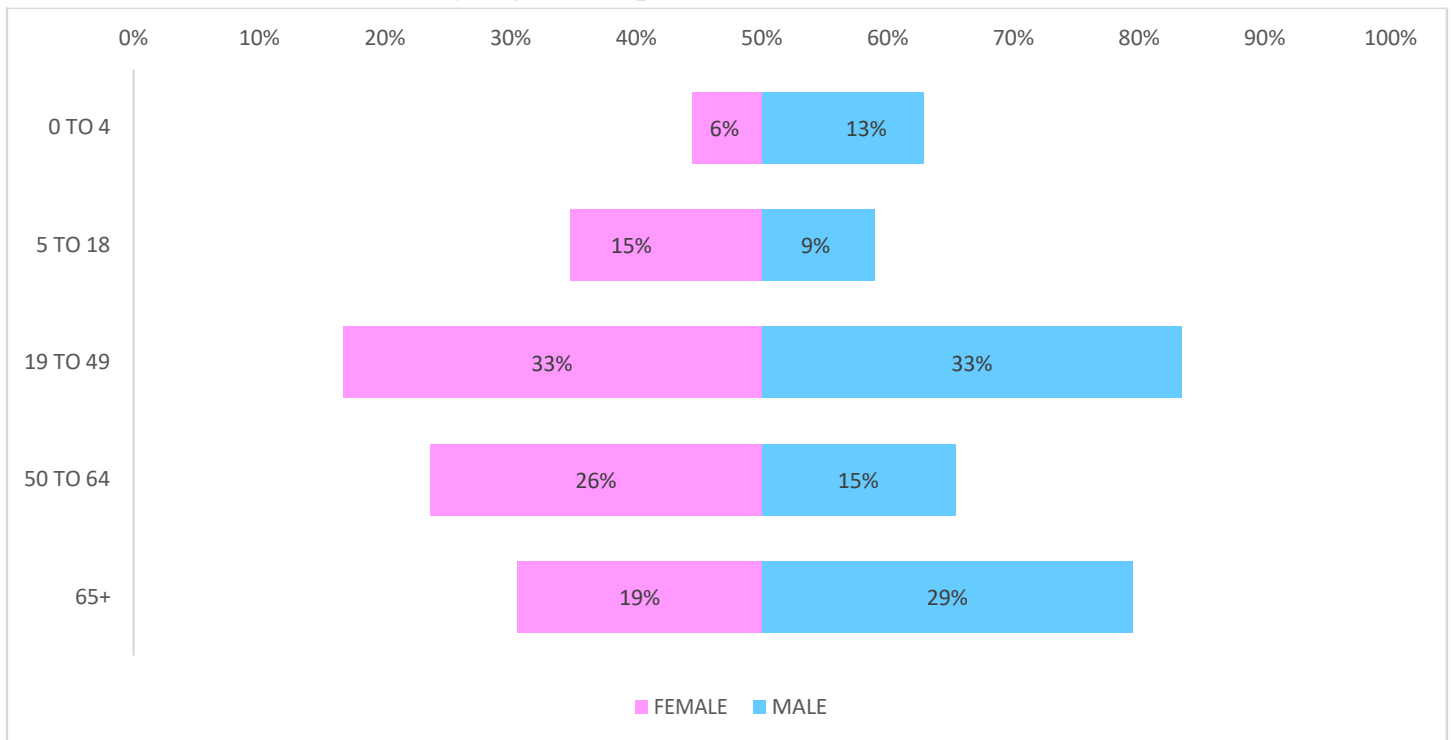
## Confirmed Influenza Percentages by Age Group



## Confirmed Influenza Cases by Type and Age Group



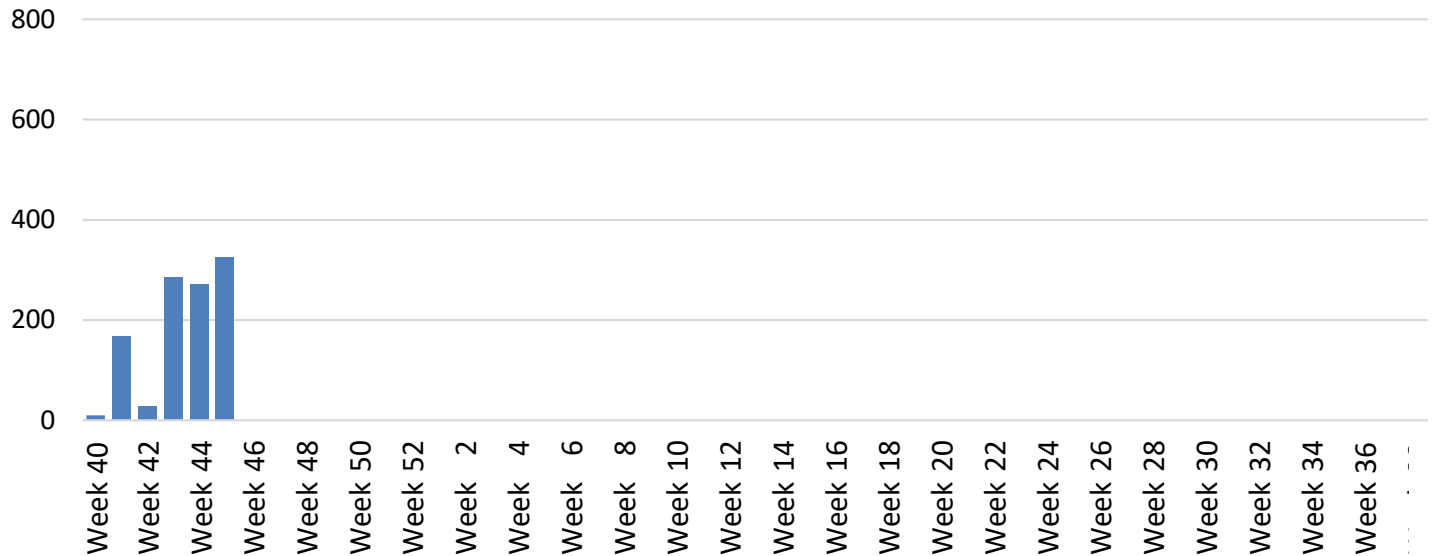
## Confirmed Influenza Cases by Age-Group and Gender



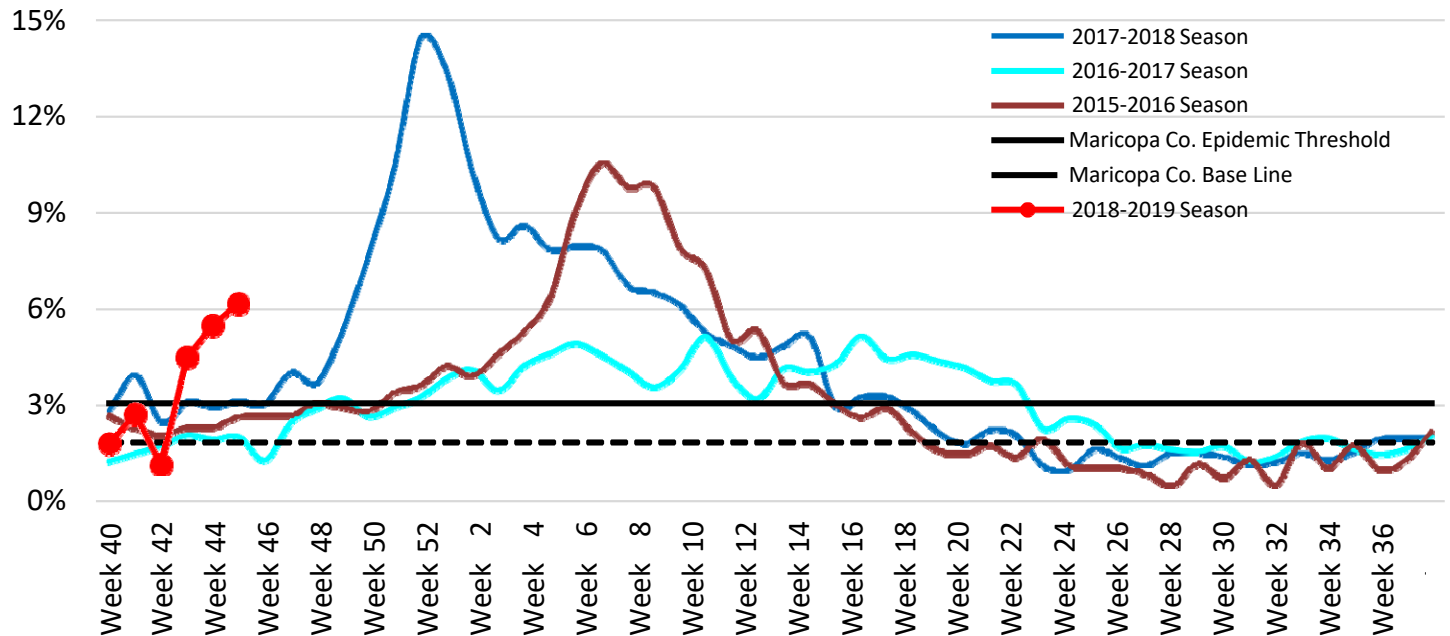
## Influenza-Like Illness Activity at Hospital Emergency Departments

Among hospitals that have reported, there have been 1,092 visits to emergency departments by individuals with flu-like symptoms this influenza season. To be counted as an individual with flu-like symptoms, the patient must have both fever and cough/sore throat.

This graph shows the number of patients with flu-like symptoms seen at 12 emergency departments.

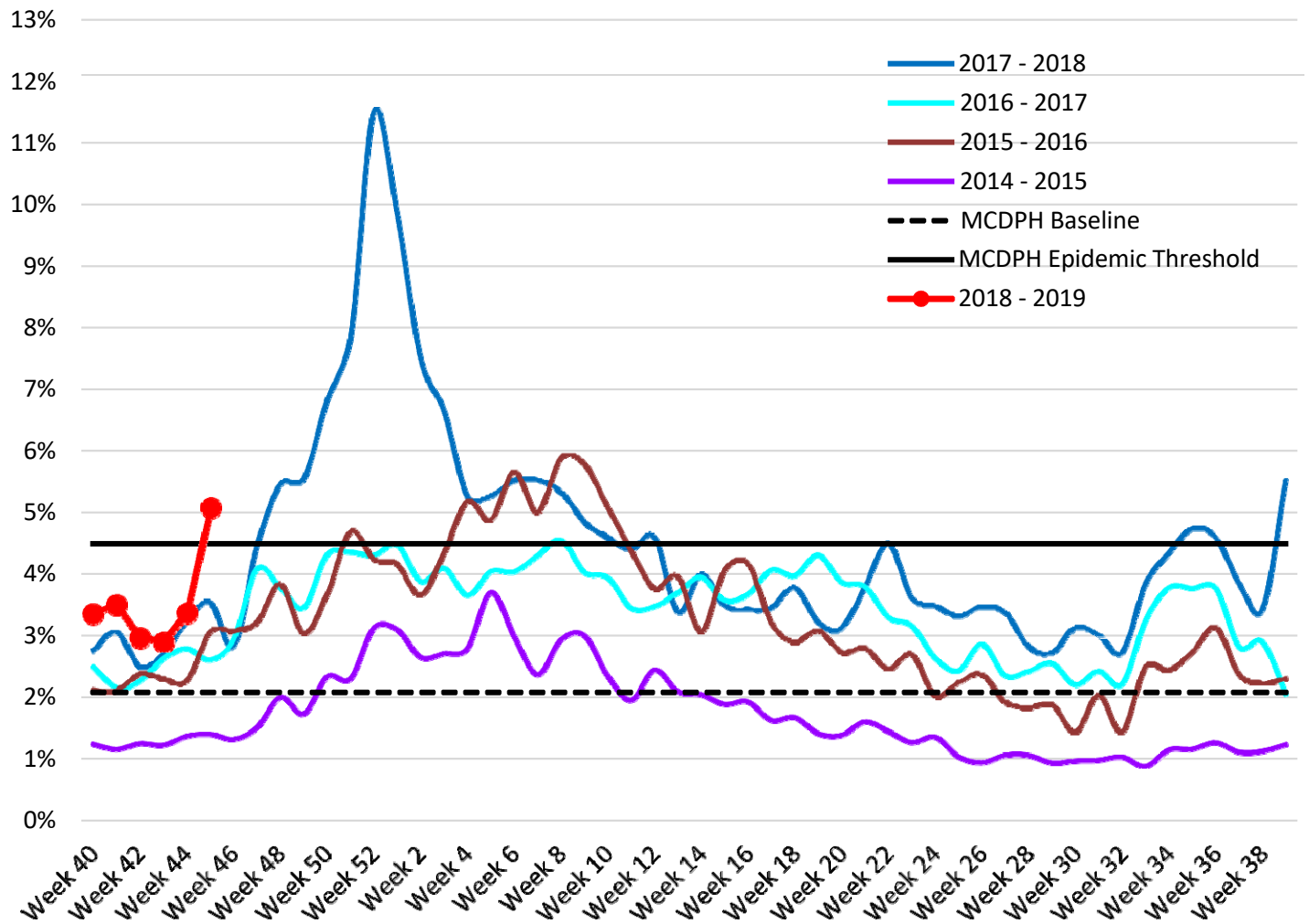


This graph compares what percent of all emergency department visits were individuals with flu-like symptoms (fever and cough/sore throat). The graph shows the trend week by week, with the current season in red.



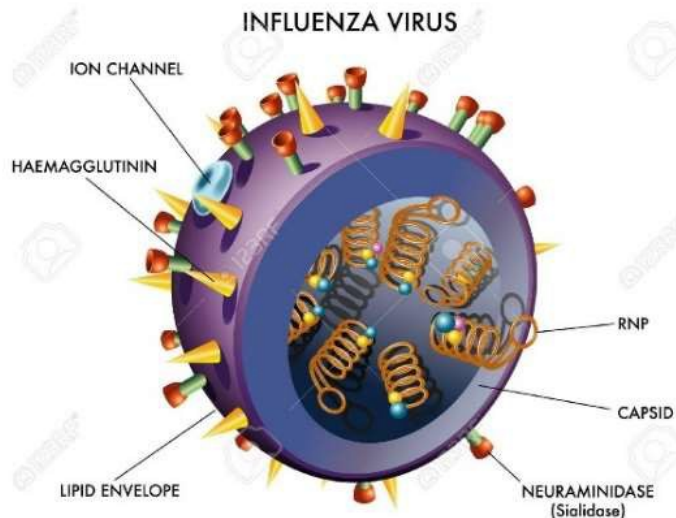
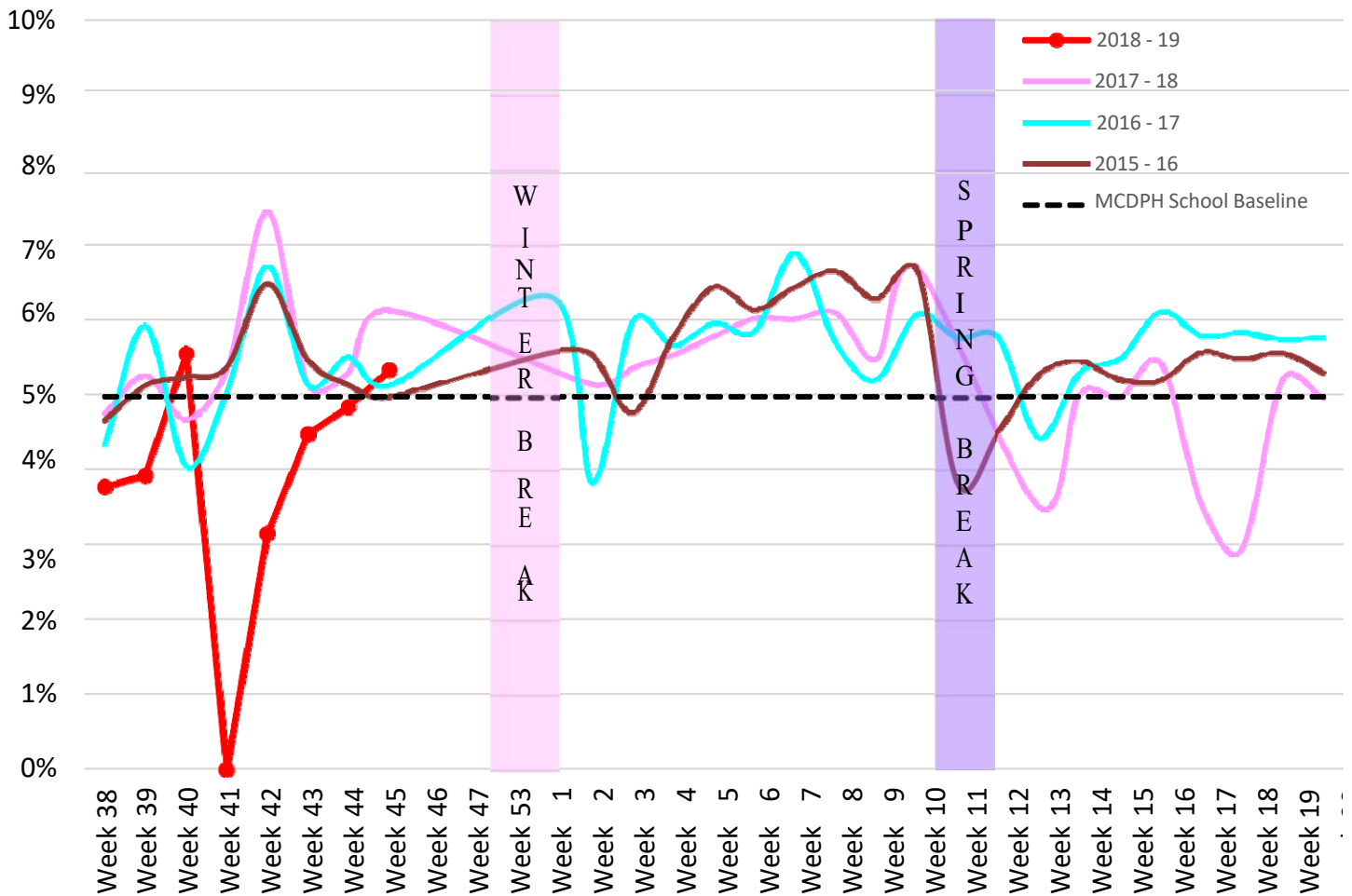
## Influenza-Like Illness Activity at Sentinel Site Outpatient Facilities Reported to the Centers for Disease Control and Prevention (CDC)

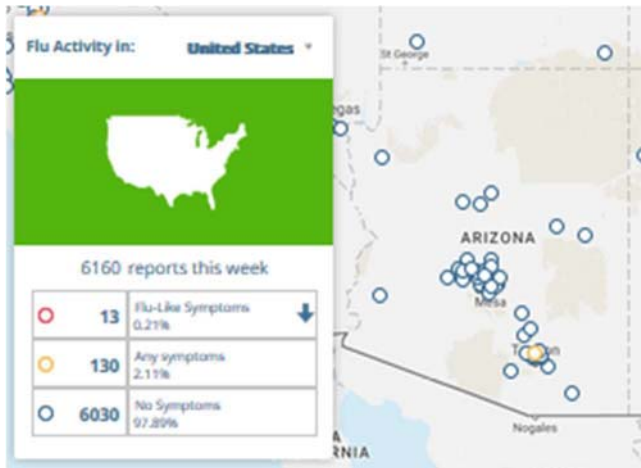
Maricopa County sentinel sites (outpatient facilities) report visits due to flu-like symptoms. This week, visits due to flu-like symptoms represented 5.09% of visits at outpatient facilities, compared to 3.38% last week.



## Absentee Activity at Schools

Absenteeism trends compared to the last three school years show the percent of students reported absent and illustrates the week by week trend. The current school year is in red. Only one school reported for weeks 41 and 42.





### Why register for Flu Near You?

Flu Near You is a participatory surveillance platform managed by the CDC. Registered users have access to many features, such as:

- The ability to report their symptoms
- A map that displays where users can find vaccines in their area
- A map of flu activity in their area and across the nation
- Updated news on the current flu season, flu shots, treatment, recovery time, and more

Everyone is invited to participate in Flu Near You by enrolling at <https://flunearyou.org>

The Maricopa County Department of Public Health wishes to thank all of the Influenza surveillance participants:

Arizona Department of Health Services

Local Hospital Emergency Departments & Infection Control Practitioners

Local Outpatient Facilities and Medical Directors

Maricopa County Public Schools

Maricopa County Office of Vital Statistics

Questions about this report may be directed to:

[epidemiology@mail.maricopa.gov](mailto:epidemiology@mail.maricopa.gov)

Information on influenza activity for the state, the U.S. and the world may be found at the following websites:

<http://www.azdhs.gov/phs/oids/epi/flu/index.htm> (ADHS)

<https://www.cdc.gov/flu/weekly/fluactivitysurv.htm> (CDC)

[http://www.who.int/influenza/gisrs\\_laboratory/updates/en/index.html](http://www.who.int/influenza/gisrs_laboratory/updates/en/index.html) (WHO)