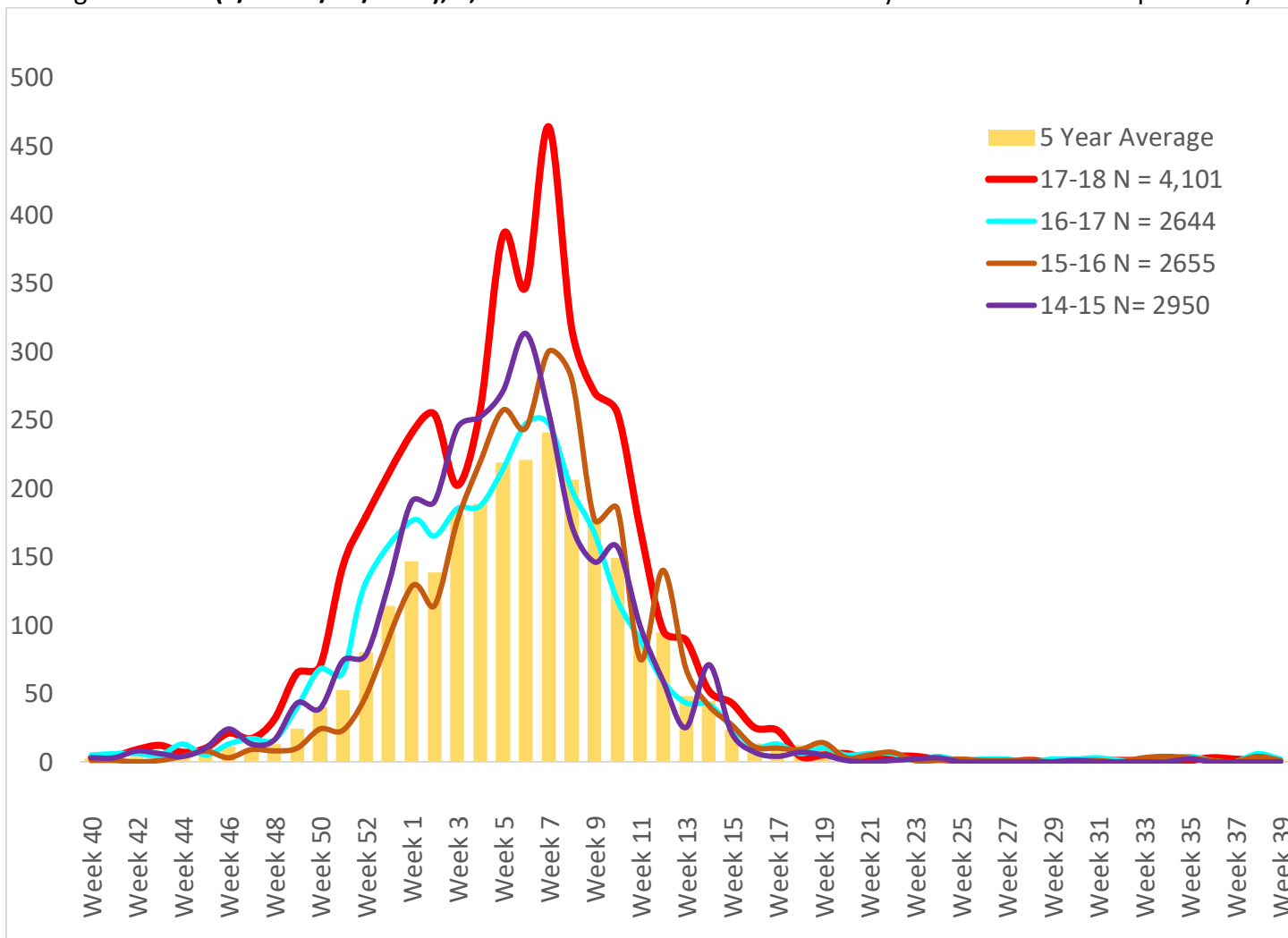




Maricopa County Department of Public Health
RSV Update
October 1, 2017 through September 30, 2018
Week 37 & 38 Posted October 12, 2018

Respiratory Syncytial Virus (RSV)

The 2017-2018 RSV season starts on 10/1/2017 (week 40) and continues through 9/30/2018 (week 39). Through week **38 (9/16 – 9/22/2018)**, **4,101** RSV cases have been laboratory confirmed in Maricopa County.



	Cumulative Season Total	Current Week Total
2017-2018	4,101	3
2016-2017	2,642	6
5 season average	2,544	2
% increase compared to 2016-2017 season	55%	-50%
% increase compared to 5 season average	61%	50%
% increase compared to last week	0%	-25%



**Maricopa County Department of Public Health
RSV Update**

October 1, 2017 through September 30, 2018

Week 37 & 38 Posted October 12, 2018

Those less than one year of age are most effected by RSV.

Age Group	Cases	Cases per 100,000 population
Age <1	1,779	3,276
Age 1 - 4	935	408
Age 5 - 17	164	23
Age 18 - 64	509	22
Age 65 +	713	154

***The Maricopa County Department of Public Health wishes to thank all of the
Influenza surveillance participants:***

Arizona Department of Health Services

Local Hospital Emergency Departments & Infection Control Practitioners

Local Outpatient Facilities and Medical Directors

Maricopa County Public Schools

Maricopa County Office of Vital Statistics

Questions about this report may be directed to:

epidemiology@mail.maricopa.gov

***Information on influenza activity for the state, the U.S. and the world may be found
at the following websites:***

<http://www.azdhs.gov/phs/oids/epi/flu/index.htm> (ADHS)

<https://www.cdc.gov/flu/weekly/fluactivitysurv.htm> (CDC)

http://www.who.int/influenza/gisrs_laboratory/updates/en/index.html (WHO)