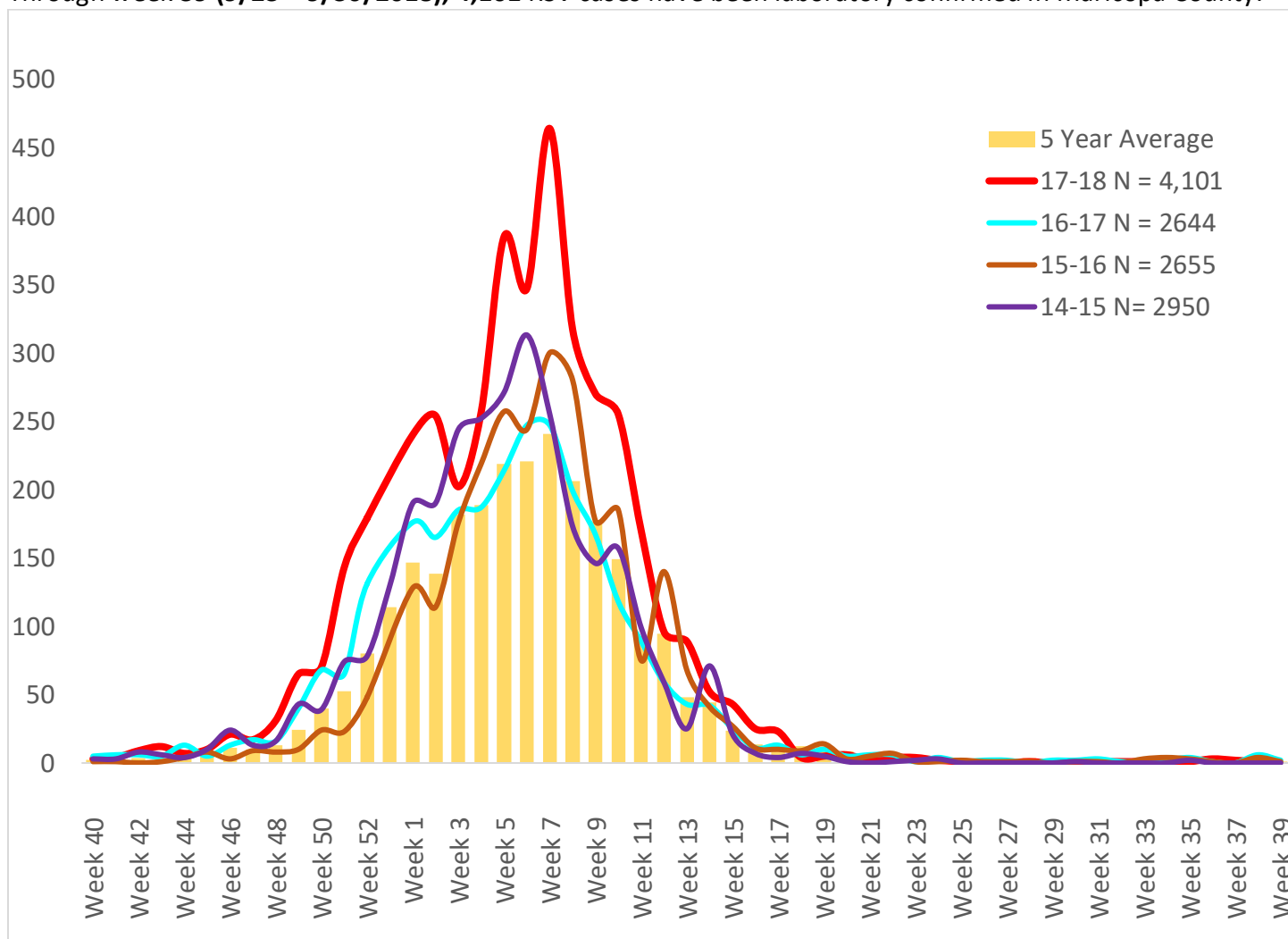




Maricopa County Department of Public Health
 RSV Update
 October 1, 2017 through September 30, 2018
 Week 39 Posted October 12, 2018

Respiratory Syncytial Virus (RSV)

The 2017-2018 RSV season starts on 10/1/2017 (week 40) and continues through 9/30/2018 (week 39). Through week **39 (9/23 – 9/30/2018)**, **4,101** RSV cases have been laboratory confirmed in Maricopa County.



	Cumulative Season Total	Current Week Total
2017-2018	4,101	0
2016-2017	2,644	2
5 season average	2,629	1
% increase compared to 2016-2017 season	56%	-100%
% increase compared to 5 season average	56%	-100%
% increase compared to last week	0%	-100%



**Maricopa County Department of Public Health
RSV Update**

October 1, 2017 through September 30, 2018

Week 39 Posted October 12, 2018

Those less than one year of age are most effected by RSV.

Age Group	Cases	Cases per 100,000 population
Age <1	1,779	3,276
Age 1 - 4	935	408
Age 5 - 17	164	23
Age 18 - 64	509	22
Age 65 +	713	154

***The Maricopa County Department of Public Health wishes to thank all of the
Influenza surveillance participants:***

Arizona Department of Health Services

Local Hospital Emergency Departments & Infection Control Practitioners

Local Outpatient Facilities and Medical Directors

Maricopa County Public Schools

Maricopa County Office of Vital Statistics

Questions about this report may be directed to:

epidemiology@mail.maricopa.gov

***Information on influenza activity for the state, the U.S. and the world may be found
at the following websites:***

<http://www.azdhs.gov/phs/oids/epi/flu/index.htm> (ADHS)

<https://www.cdc.gov/flu/weekly/fluactivitysurv.htm> (CDC)

http://www.who.int/influenza/gisrs_laboratory/updates/en/index.html (WHO)