



## Maricopa County Department of Public Health

### RSV Update

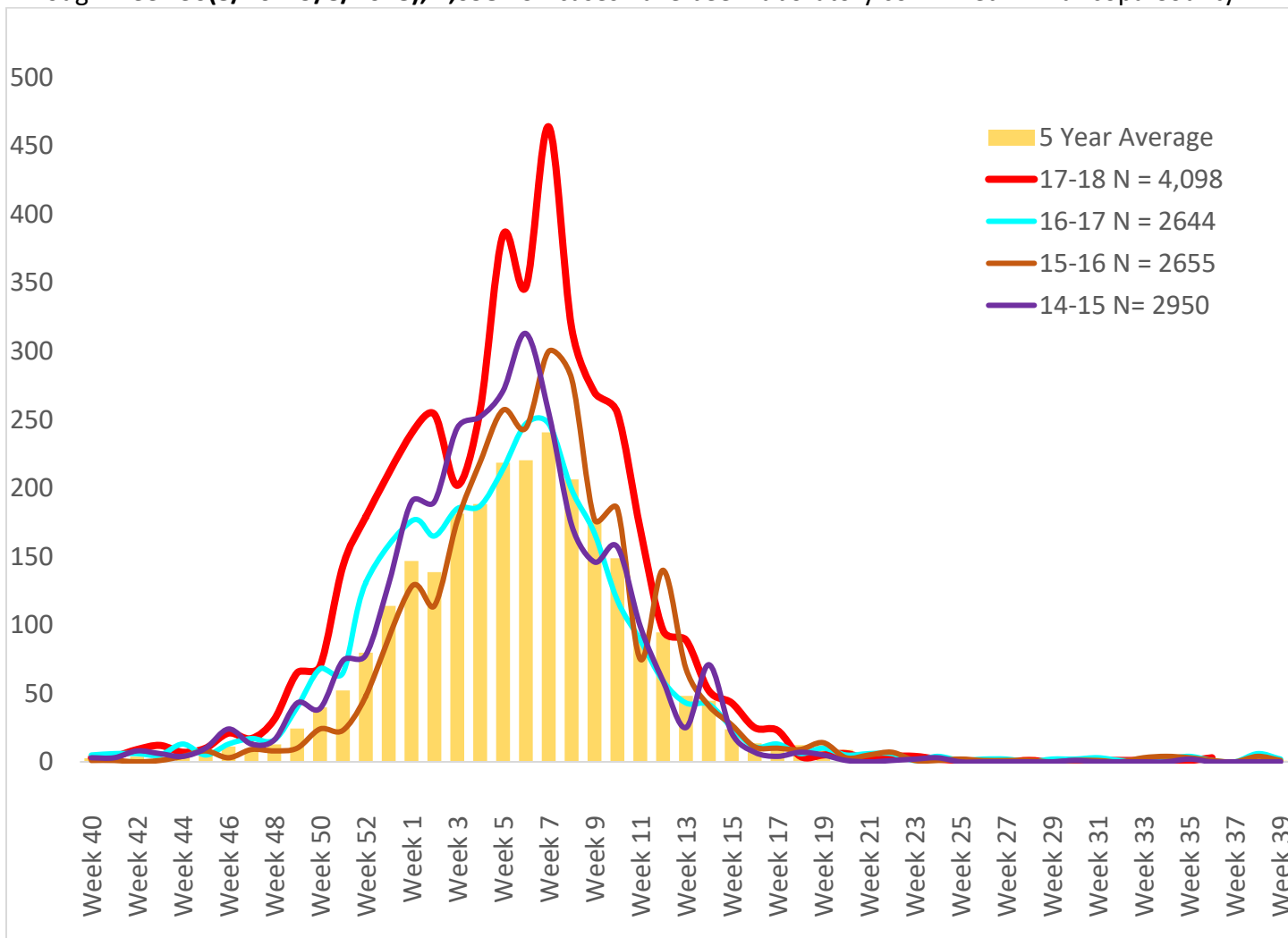
October 1, 2017 through September 30, 2018

Week 35 & 36 Posted September 14, 2018

### Respiratory Syncytial Virus (RSV)

The 2017-2018 RSV season starts on 10/1/2017(week 40) and continues through 9/30/2018(week 39).

Through week **36(8/26 – 9/8/2018)**, **4,098** RSV cases have been laboratory confirmed in Maricopa County.



	Cumulative Season Total	Current Week Total
2017-2018	4098	3
2016-2017	2636	1
5 season average	2629	1
<i>% increase compared to 2016-2017 season</i>	55%	200%
<i>% increase compared to 5 season average</i>	56%	275%
<i>% increase compared to last week</i>	0%	200%



## Maricopa County Department of Public Health

### RSV Update

October 1, 2017 through September 30, 2018

Week 35 & 36 Posted September 14, 2018

Those less than one year of age are most effected by RSV.

Age Group	Cases	Cases per 100,000 population
Age <1	1779	3276
Age 1 - 4	933	408
Age 5 - 17	164	23
Age 18 - 64	508	22
Age 65 +	713	154

***The Maricopa County Department of Public Health wishes to thank all of the  
Influenza surveillance participants:***

*Arizona Department of Health Services*

*Local Hospital Emergency Departments & Infection Control Practitioners*

*Local Outpatient Facilities and Medical Directors*

*Maricopa County Public Schools*

*Maricopa County Office of Vital Statistics*

***Questions about this report may be directed to:***

***[epidemiology@mail.maricopa.gov](mailto:epidemiology@mail.maricopa.gov)***

***Information on influenza activity for the state, the U.S. and the world may be found  
at the following websites:***

***<http://www.azdhs.gov/phs/oids/epi/flu/index.htm>*** (ADHS)

***<https://www.cdc.gov/flu/weekly/fluactivitysurv.htm>*** (CDC)

***[http://www.who.int/influenza/gisrs\\_laboratory/updates/en/index.html](http://www.who.int/influenza/gisrs_laboratory/updates/en/index.html)*** (WHO)