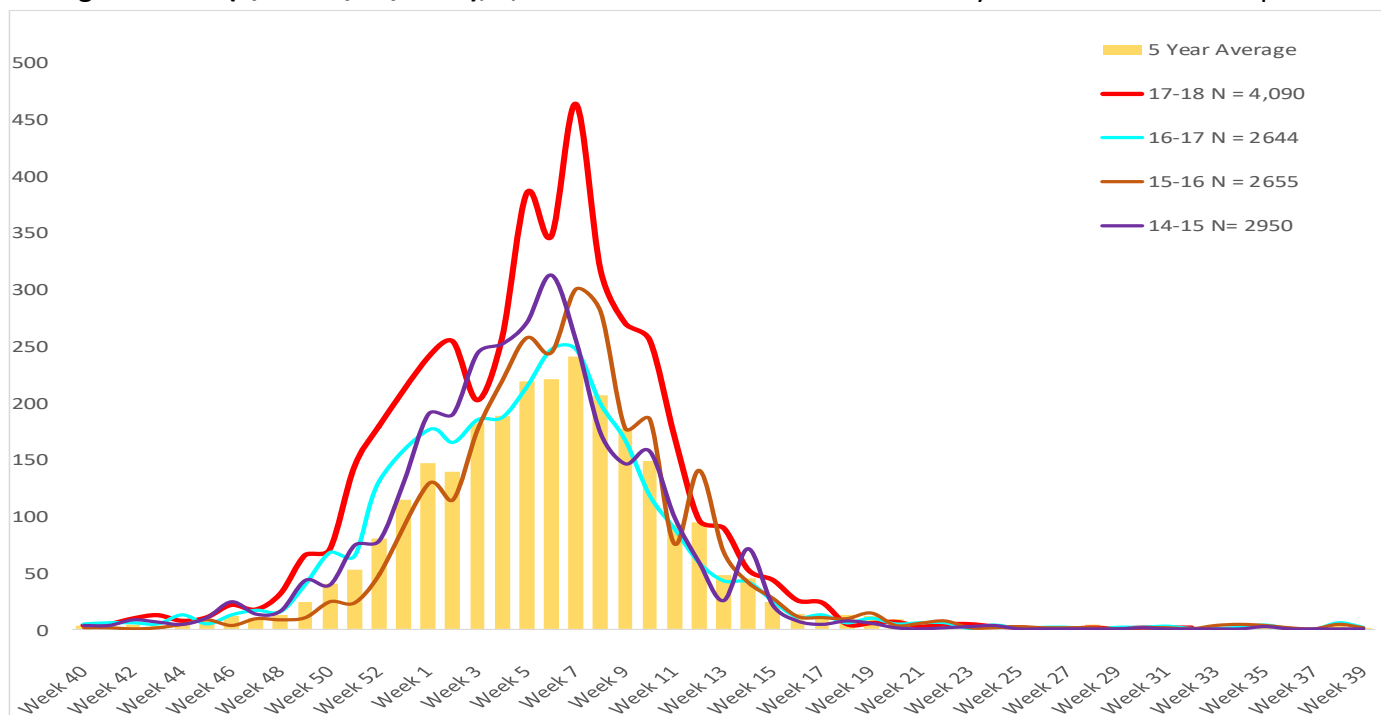




Maricopa County Department of Public Health
RSV Update
 October 1, 2017 through September 30, 2018
 Week 31 & 32 Posted August 17, 2018

Respiratory Syncytial Virus (RSV)

The 2017-2018 RSV season starts on 10/1/2017(week 40) and continues through 9/30/2018(week 39). Through week **30(7/30 – 8/11/2018)**, **4,092** RSV cases have been laboratory confirmed in Maricopa County.



| | Cumulative Season Total | Current Week Total |
|---|-------------------------|--------------------|
| 2017-2018 | 4092 | 1 |
| 2016-2017 | 2628 | 1 |
| 5 season average | 2623 | 0 |
| % increase compared to 2016-2017 season | 56% | 0% |
| % increase compared to 5 season average | 56% | 400% |
| % increase compared to last week | 0% | 100% |

Those less than one year of age are most effected by RSV.

| Age Group | Cases | Cases per 100,000 population |
|-------------|-------|------------------------------|
| Age <1 | 1776 | 3271 |
| Age 1 - 4 | 930 | 407 |
| Age 5 - 17 | 164 | 23 |
| Age 18 - 64 | 508 | 22 |
| Age 65 + | 713 | 154 |



Maricopa County Department of Public Health
RSV Update
October 1, 2017 through September 30, 2018
Week 31 & 32 Posted August 17, 2018

***The Maricopa County Department of Public Health wishes to thank all of the
Influenza surveillance participants:***

Arizona Department of Health Services

Local Hospital Emergency Departments & Infection Control Practitioners

Local Outpatient Facilities and Medical Directors

Maricopa County Public Schools

Maricopa County Office of Vital Statistics

Questions about this report may be directed to:

epidemiology@mail.maricopa.gov

***Information on influenza activity for the state, the U.S. and the world may be found
at the following websites:***

<http://www.azdhs.gov/phs/oids/epi/flu/index.htm> (ADHS)

<https://www.cdc.gov/flu/weekly/fluactivitysurv.htm> (CDC)

http://www.who.int/influenza/gisrs_laboratory/updates/en/index.html (WHO)