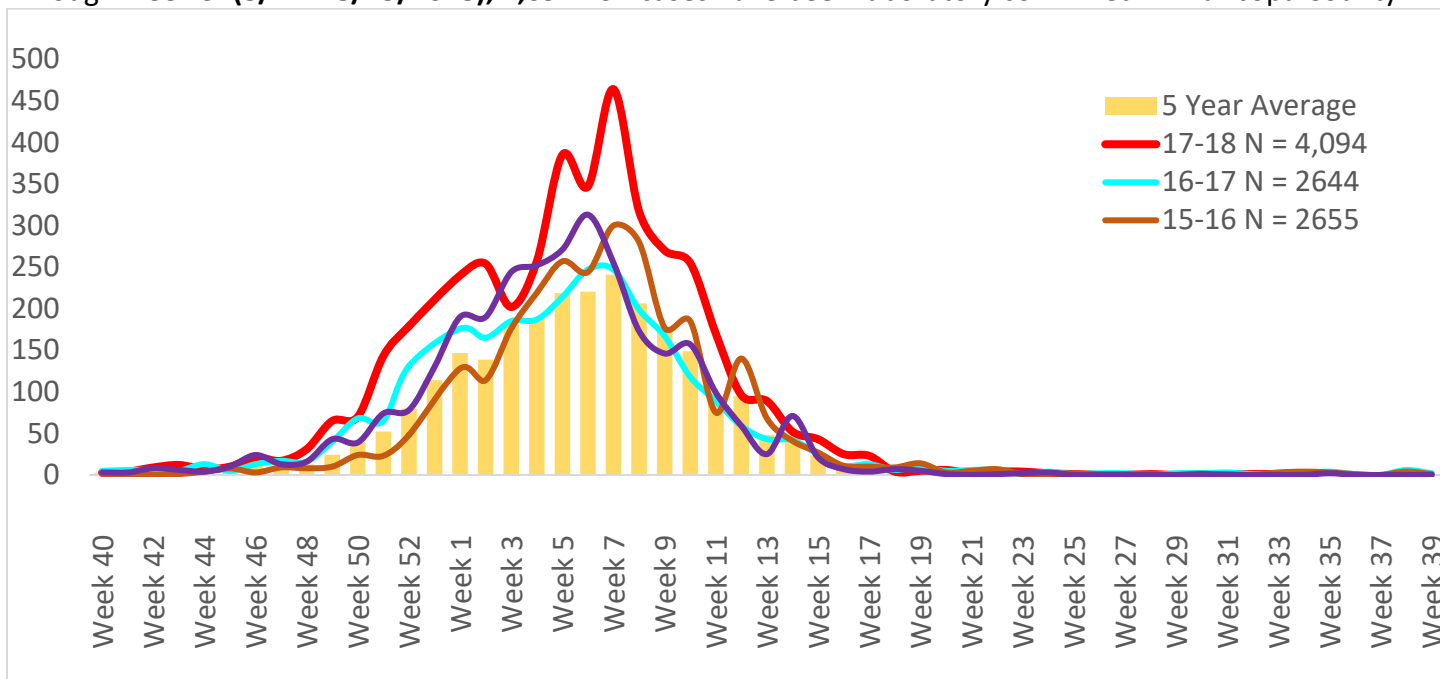




**Maricopa County Department of Public Health**  
**RSV Update**  
**October 1, 2017 through September 30, 2018**  
**Week 33 & 34 Posted August 31, 2018**

### Respiratory Syncytial Virus (RSV)

The 2017-2018 RSV season starts on 10/1/2017(week 40) and continues through 9/30/2018(week 39). Through week **34(8/12 – 8/25/2018)**, **4,094** RSV cases have been laboratory confirmed in Maricopa County.



	<b>Cumulative Season Total</b>	<b>Current Week Total</b>
2017-2018	4094	1
2016-2017	2631	2
5 season average	2626	2
<i>% increase compared to 2016-2017 season</i>	56%	-50%
<i>% increase compared to 5 season average</i>	56%	-38%
<i>% increase compared to last week</i>	0%	0%

Those less than one year of age are most effected by RSV.

<b>Age Group</b>	<b>Cases</b>	<b>Cases per 100,000 population</b>
Age <1	1777	3273
Age 1 - 4	931	407
Age 5 - 17	164	23
Age 18 - 64	508	22
Age 65 +	713	154



**Maricopa County Department of Public Health**  
**RSV Update**  
**October 1, 2017 through September 30, 2018**  
**Week 33 & 34 Posted August 31, 2018**

***The Maricopa County Department of Public Health wishes to thank all of the  
Influenza surveillance participants:***

*Arizona Department of Health Services*

*Local Hospital Emergency Departments & Infection Control Practitioners*

*Local Outpatient Facilities and Medical Directors*

*Maricopa County Public Schools*

*Maricopa County Office of Vital Statistics*

***Questions about this report may be directed to:***

***[epidemiology@mail.maricopa.gov](mailto:epidemiology@mail.maricopa.gov)***

***Information on influenza activity for the state, the U.S. and the world may be found  
at the following websites:***

***<http://www.azdhs.gov/phs/oids/epi/flu/index.htm> (ADHS)***

***<https://www.cdc.gov/flu/weekly/fluactivitysurv.htm> (CDC)***

***[http://www.who.int/influenza/gisrs\\_laboratory/updates/en/index.html](http://www.who.int/influenza/gisrs_laboratory/updates/en/index.html) (WHO)***