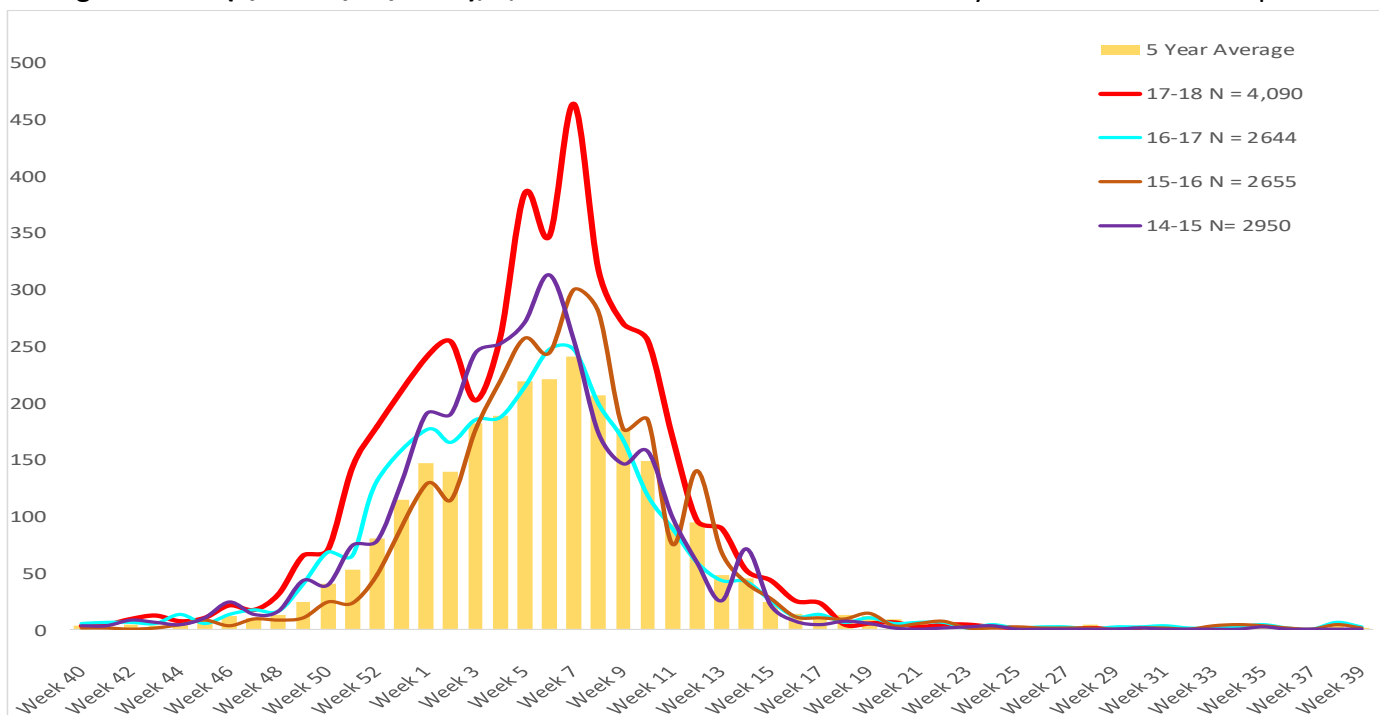




Maricopa County Department of Public Health  
**RSV Update**  
 October 1, 2017 through September 30, 2018  
 Week 29 & 30 Posted August 3, 2018

## Respiratory Syncytial Virus (RSV)

The 2017-2018 RSV season starts on 10/1/2017(week 40) and continues through 9/30/2018(week 39). Through week **30(7/15 – 7/29/2018)**, **4,090** RSV cases have been laboratory confirmed in Maricopa County.



	Cumulative Season Total	Current Week Total
2017-2018	4090	1
2016-2017	2624	2
5 season average	2622	1
% increase compared to 2016-2017 season	56%	-50%
% increase compared to 5 season average	56%	0%
% increase compared to last week	0%	N/A

Those less than one year of age are most effected by RSV.

Age Group	Cases	Cases per 100,000 population
Age <1	1775	3269
Age 1 - 4	929	407
Age 5 - 17	164	23
Age 18 - 64	508	22
Age 65 +	713	154



**Maricopa County Department of Public Health  
RSV Update  
October 1, 2017 through September 30, 2018  
Week 29 & 30 Posted August 3, 2018**

***The Maricopa County Department of Public Health wishes to thank all of the  
Influenza surveillance participants:***

*Arizona Department of Health Services*

*Local Hospital Emergency Departments & Infection Control Practitioners*

*Local Outpatient Facilities and Medical Directors*

*Maricopa County Public Schools*

*Maricopa County Office of Vital Statistics*

***Questions about this report may be directed to:***

***[epidemiology@mail.maricopa.gov](mailto:epidemiology@mail.maricopa.gov)***

***Information on influenza activity for the state, the U.S. and the world may be found  
at the following websites:***

***<http://www.azdhs.gov/phs/oids/epi/flu/index.htm> (ADHS)***

***<https://www.cdc.gov/flu/weekly/fluactivitysurv.htm> (CDC)***

***[http://www.who.int/influenza/gisrs\\_laboratory/updates/en/index.html](http://www.who.int/influenza/gisrs_laboratory/updates/en/index.html) (WHO)***