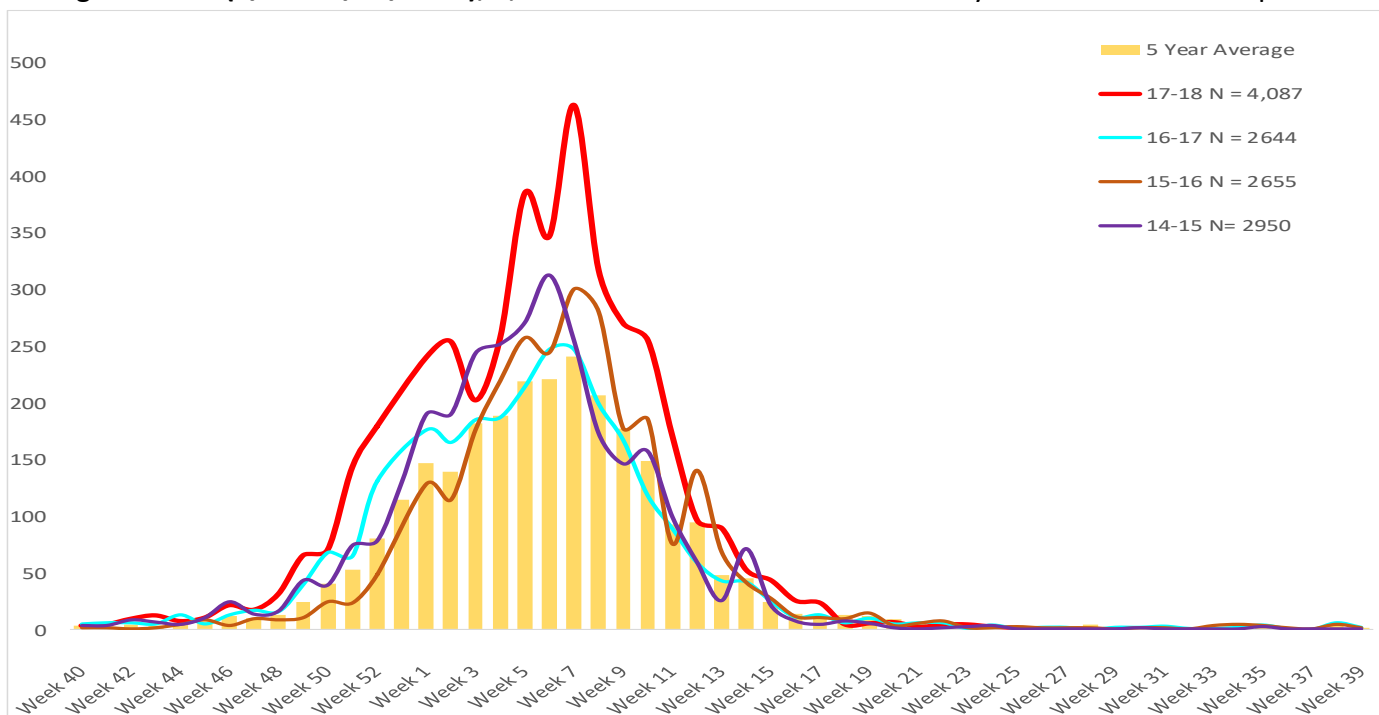




Maricopa County Department of Public Health
RSV Update
 October 1, 2017 through September 30, 2018
 Week 25 Posted June 27, 2018

Respiratory Syncytial Virus (RSV)

The 2017-2018 RSV season starts on 10/1/2017(week 40) and continues through 9/30/2018(week 39). Through week **25(6/17 – 6/23/2018)**, **4,087** RSV cases have been laboratory confirmed in Maricopa County.



	Cumulative Season Total	Current Week Total
2017-2018	4087	1
2016-2017	2616	1
5 season average	2614	1
% increase compared to 2016-2017 season	56%	0%
% increase compared to 5 season average	56%	-29%
% increase compared to last week	0%	-50%

Those less than one year of age are most effected by RSV.

Age Group	Cases	Cases per 100,000 population
Age <1	1773	3265
Age 1 - 4	928	406
Age 5 - 17	164	23
Age 18 - 64	508	22
Age 65 +	713	154



Maricopa County Department of Public Health
RSV Update
October 1, 2017 through September 30, 2018
Week 25 Posted June 27, 2018

***The Maricopa County Department of Public Health wishes to thank all of the
Influenza surveillance participants:***

Arizona Department of Health Services

Local Hospital Emergency Departments & Infection Control Practitioners

Local Outpatient Facilities and Medical Directors

Maricopa County Public Schools

Maricopa County Office of Vital Statistics

Questions about this report may be directed to:

epidemiology@mail.maricopa.gov

***Information on influenza activity for the state, the U.S. and the world may be found
at the following websites:***

<http://www.azdhs.gov/phs/oids/epi/flu/index.htm> (ADHS)

<https://www.cdc.gov/flu/weekly/fluactivitysurv.htm> (CDC)

http://www.who.int/influenza/gisrs_laboratory/updates/en/index.html (WHO)