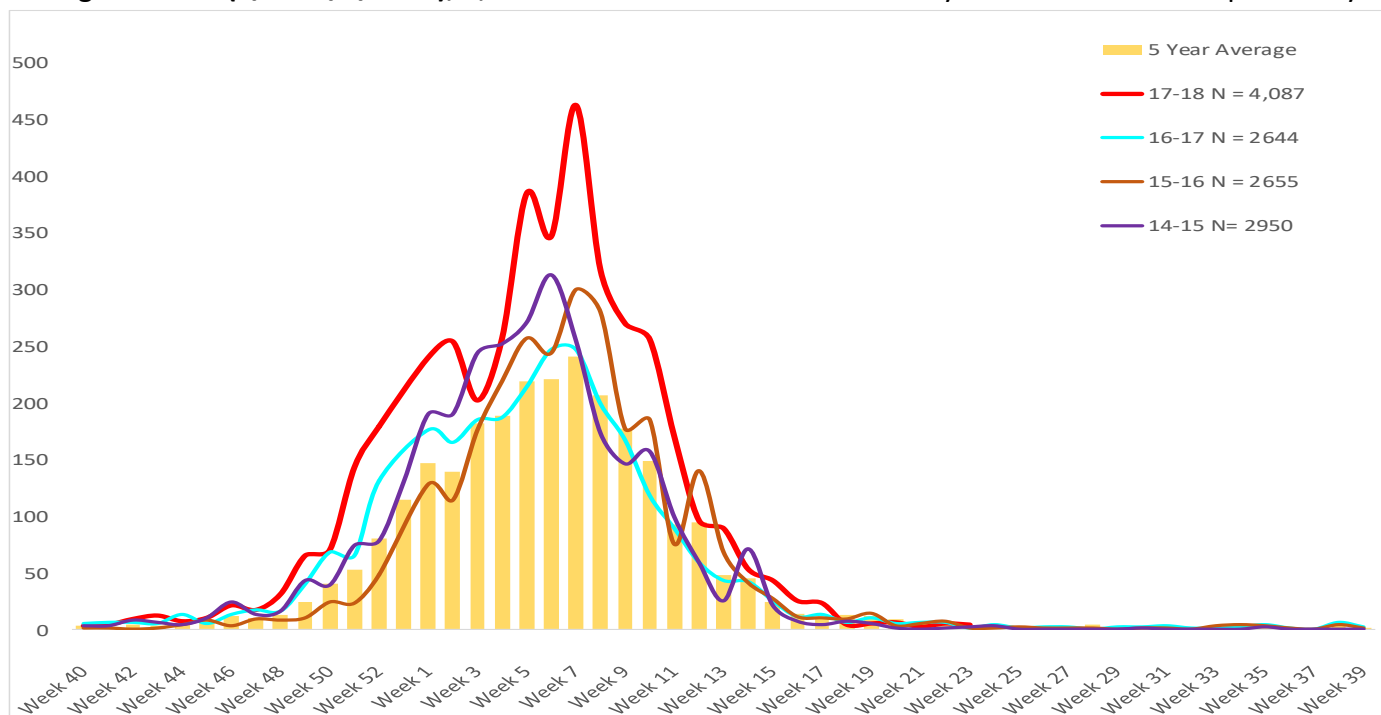




Maricopa County Department of Public Health  
**RSV Update**  
 October 1, 2017 through September 30, 2018  
 Week 23 Posted June 15, 2018

## Respiratory Syncytial Virus (RSV)

The 2017-2018 RSV season starts on 10/1/2017(week 40) and continues through 9/30/2018(week 39). Through week **23(6/3 – 6/9/2018)**, **4,087** RSV cases have been laboratory confirmed in Maricopa County.



|   | Cumulative Season Total | Current Week Total |
|---|-------------------------|--------------------|
| 2017-2018                               | 4087                    | 5                  |
| 2016-2017                               | 2610                    | 6                  |
| 5 season average                        | 2606                    | 5                  |
| % increase compared to 2016-2017 season | 57%                     | -17%               |
| % increase compared to 5 season average | 57%                     | 0%                 |
| % increase compared to last week        | 0%                      | 150%               |

Those less than one year of age are most effected by RSV.

| Age Group   | Cases | Cases per 100,000 population |
|-------------|-------|------------------------------|
| Age <1      | 1774  | 3267                         |
| Age 1 - 4   | 928   | 406                          |
| Age 5 - 17  | 164   | 23                           |
| Age 18 - 64 | 508   | 22                           |
| Age 65 +    | 712   | 154                          |



**Maricopa County Department of Public Health**  
**RSV Update**  
**October 1, 2017 through September 30, 2018**  
**Week 23 Posted June 15, 2018**

***The Maricopa County Department of Public Health wishes to thank all of the  
Influenza surveillance participants:***

*Arizona Department of Health Services*

*Local Hospital Emergency Departments & Infection Control Practitioners*

*Local Outpatient Facilities and Medical Directors*

*Maricopa County Public Schools*

*Maricopa County Office of Vital Statistics*

***Questions about this report may be directed to:***

***[epidemiology@mail.maricopa.gov](mailto:epidemiology@mail.maricopa.gov)***

***Information on influenza activity for the state, the U.S. and the world may be found  
at the following websites:***

***<http://www.azdhs.gov/phs/oids/epi/flu/index.htm>*** (ADHS)

***<https://www.cdc.gov/flu/weekly/fluactivitysurv.htm>*** (CDC)

***[http://www.who.int/influenza/gisrs\\_laboratory/updates/en/index.html](http://www.who.int/influenza/gisrs_laboratory/updates/en/index.html)*** (WHO)