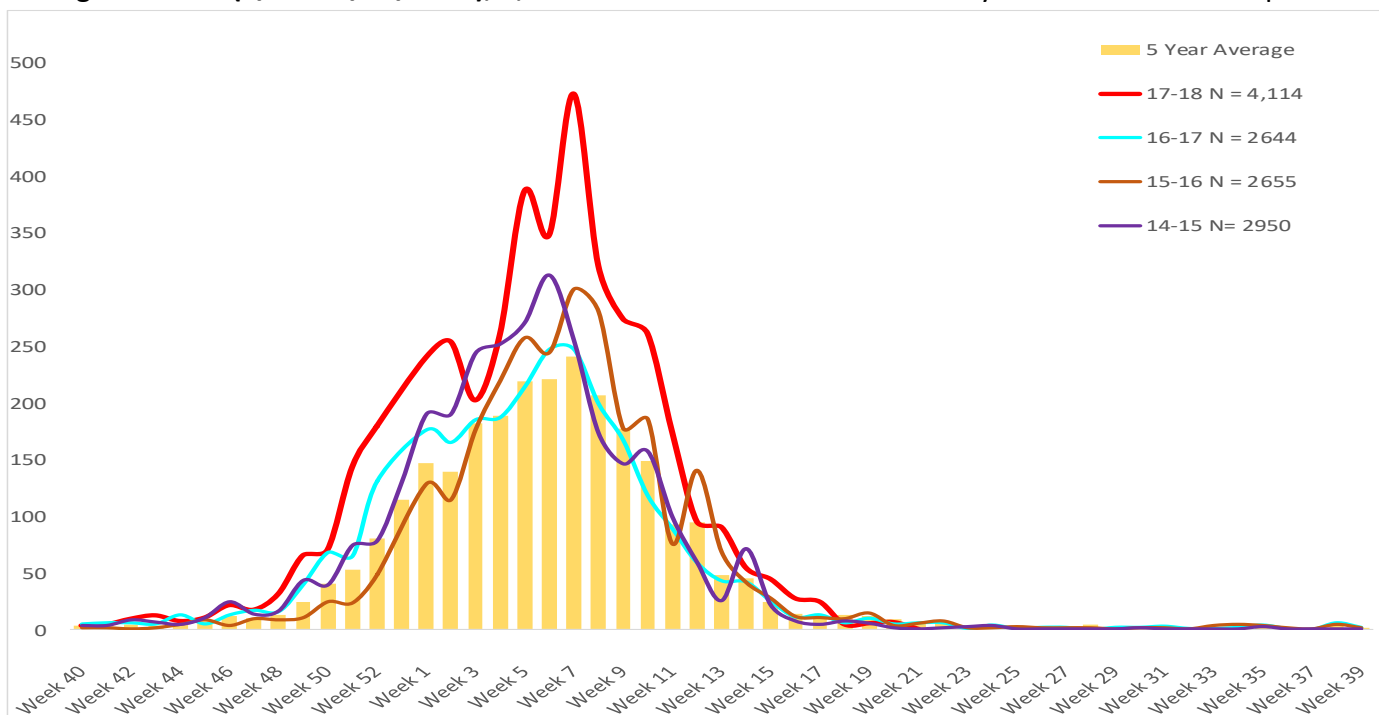




Maricopa County Department of Public Health
RSV Update
 October 1, 2017 through September 30, 2018
 Week 21 Posted May 31, 2018

Respiratory Syncytial Virus (RSV)

The 2017-2018 RSV season starts on 10/1/2017(week 40) and continues through 9/30/2018(week 39). Through week 21 (5/20 – 5/26/2018), 4,114 RSV cases have been laboratory confirmed in Maricopa County.



	Cumulative Season Total	Current Week Total
2017-2018	4114	0
2016-2017	2604	6
5 season average	2601	33
% increase compared to 2016-2017 season	58%	-100%
% increase compared to 5 season average	58%	-100%
% increase compared to last week	0%	-100%

Those less than one year of age are most effected by RSV.

Age Group	Cases	Cases per 100,000 population
Age <1	1793	3302
Age 1 - 4	940	411
Age 5 - 17	168	23
Age 18 - 64	505	22
Age 65 +	712	154



Maricopa County Department of Public Health
RSV Update
October 1, 2017 through September 30, 2018
Week 21 Posted May 31, 2018

***The Maricopa County Department of Public Health wishes to thank all of the
Influenza surveillance participants:***

Arizona Department of Health Services

Local Hospital Emergency Departments & Infection Control Practitioners

Local Outpatient Facilities and Medical Directors

Maricopa County Public Schools

Maricopa County Office of Vital Statistics

Questions about this report may be directed to:

epidemiology@mail.maricopa.gov

***Information on influenza activity for the state, the U.S. and the world may be found
at the following websites:***

<http://www.azdhs.gov/phs/oids/epi/flu/index.htm> (ADHS)

<https://www.cdc.gov/flu/weekly/fluactivitysurv.htm> (CDC)

http://www.who.int/influenza/gisrs_laboratory/updates/en/index.html (WHO)