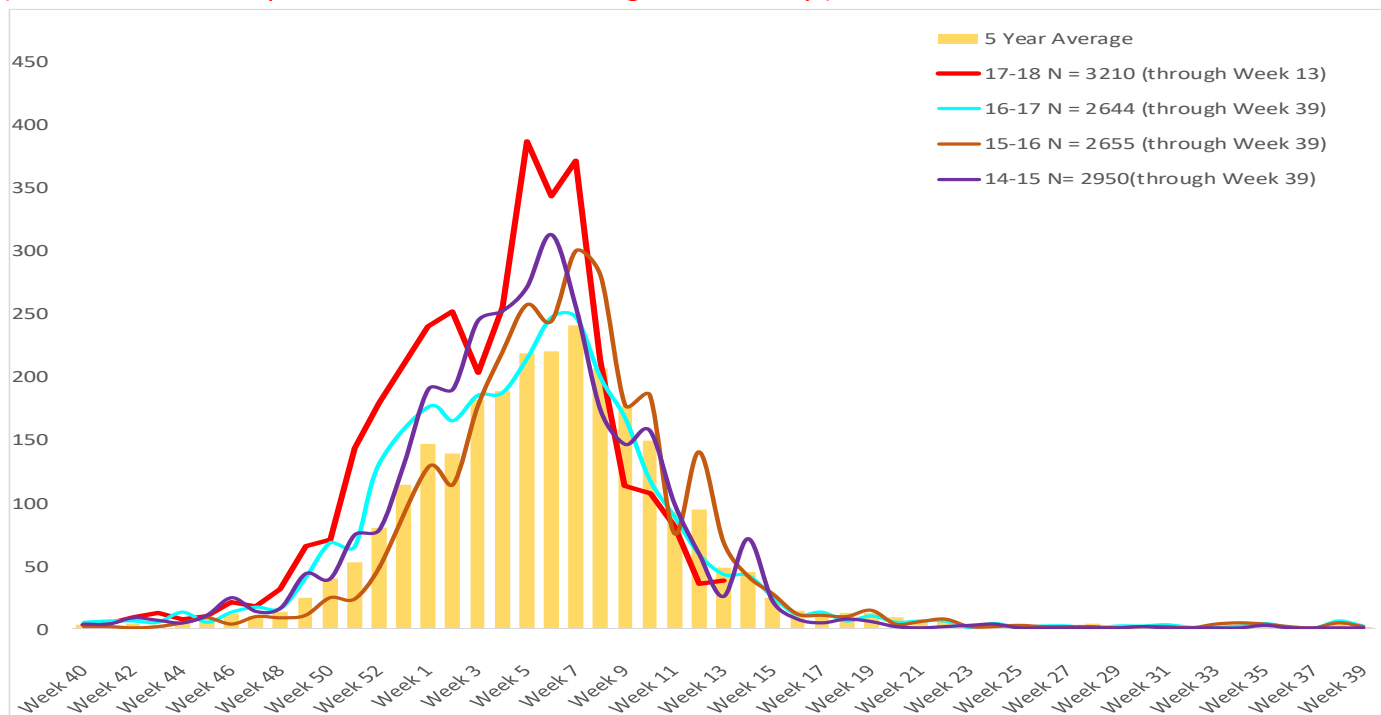




Maricopa County Department of Public Health  
**RSV Update**  
 October 1, 2017 through September 30, 2018  
 Week 13 Posted April 5, 2018

## Respiratory Syncytial Virus (RSV)

The 2017-2018 RSV season starts on 10/1/2017(week 40) and continues through 9/30/2018(week 39). Through week **13 (3/25 – 3/31/2018)**, **3,210** RSV cases have been laboratory confirmed in Maricopa County. (These numbers are provisional due to a back-log in data-entry.)



	Cumulative Season Total	Current Week Total
2017-2018	3210	38
2016-2017	2486	43
5 season average	2470	79
% increase compared to 2016-2017 season	29%	-12%
% increase compared to 5 season average	30%	-52%
% increase compared to last week	1%	9%

Those less than one year of age are most effected by RSV.

Age Group	Cases	Cases per 100,000 population
Age <1	1357	2499
Age 1 - 4	723	316
Age 5 - 17	115	16
Age 18 - 64	388	17
Age 65 +	596	129



**Maricopa County Department of Public Health**  
**RSV Update**  
**October 1, 2017 through September 30, 2018**  
**Week 13 Posted April 5, 2018**

***The Maricopa County Department of Public Health wishes to thank all of the  
Influenza surveillance participants:***

*Arizona Department of Health Services*

*Local Hospital Emergency Departments & Infection Control Practitioners*

*Local Outpatient Facilities and Medical Directors*

*Maricopa County Public Schools*

*Maricopa County Office of Vital Statistics*

***Questions about this report may be directed to:***

***[epidemiology@mail.maricopa.gov](mailto:epidemiology@mail.maricopa.gov)***

***Information on influenza activity for the state, the U.S. and the world may be found  
at the following websites:***

***<http://www.azdhs.gov/phs/oids/epi/flu/index.htm> (ADHS)***

***<https://www.cdc.gov/flu/weekly/fluactivitysurv.htm> (CDC)***

***[http://www.who.int/influenza/gisrs\\_laboratory/updates/en/index.html](http://www.who.int/influenza/gisrs_laboratory/updates/en/index.html) (WHO)***