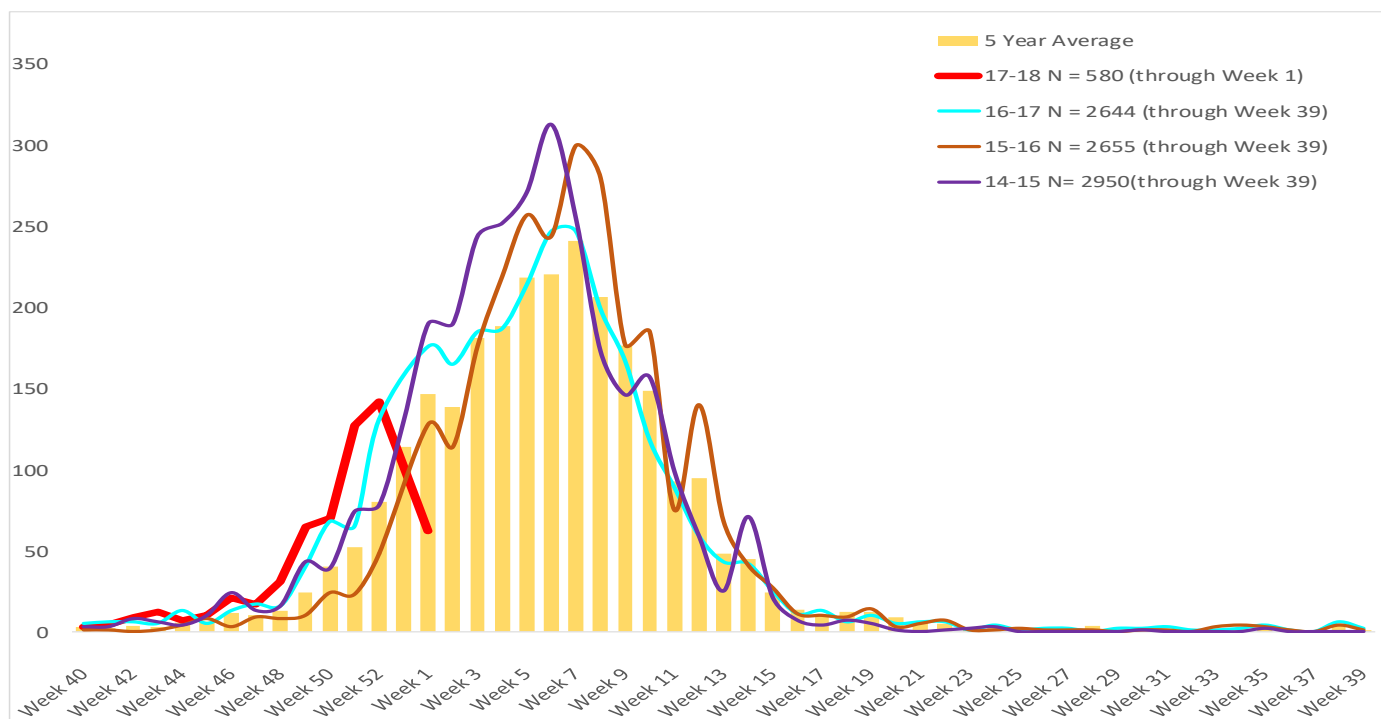




Maricopa County Department of Public Health
RSV Update
 October 1, 2017 through September 30, 2018
 Week 1 Posted January 12, 2018

Respiratory Syncytial Virus (RSV)

The 2017-2018 RSV season starts on 10/1/2017(week 40) and continues through 9/30/2018(week 39). Through week 1(12/26 – 1/6/2017), 580 RSV cases have been laboratory confirmed in Maricopa County.



	Cumulative Season Total	Current Week Total
2017-2018	580	62
2016-2017	566	176
5 season average	514	147
% increase compared to 2016-2017 season	2%	-65%
% increase compared to 5 season average	13%	-58%
% increase compared to last week	12%	-56%

Those less than one year of age are most effected by RSV.

Age Group	Cases	Cases per 100,000 population
Age <1	251	462
Age 1 - 4	175	77
Age 5 - 17	19	3
Age 18 - 64	61	3
Age 65 +	73	16



**Maricopa County Department of Public Health
RSV Update
October 1, 2017 through September 30, 2018
Week 1 Posted January 12, 2018**

***The Maricopa County Department of Public Health wishes to thank all of the
Influenza surveillance participants:***

Arizona Department of Health Services

Local Hospital Emergency Departments & Infection Control Practitioners

Local Outpatient Facilities and Medical Directors

Maricopa County Public Schools

Maricopa County Office of Vital Statistics

Questions about this report may be directed to:

epidemiology@mail.maricopa.gov

***Information on influenza activity for the state, the U.S. and the world may be found
at the following websites:***

<http://www.azdhs.gov/phs/oids/epi/flu/index.htm> (ADHS)

<https://www.cdc.gov/flu/weekly/fluactivitysurv.htm> (CDC)

http://www.who.int/influenza/gisrs_laboratory/updates/en/index.html (WHO)