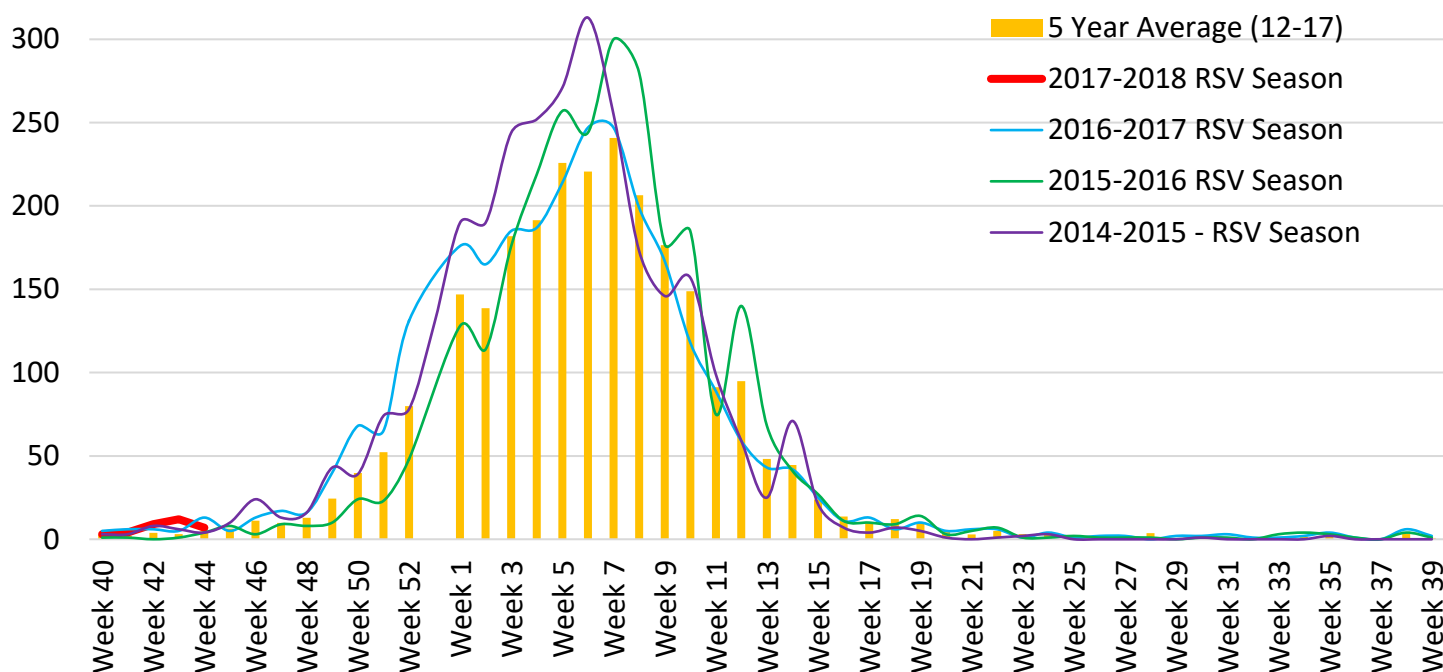




Maricopa County Department of Public Health  
**RSV Update**  
 October 1, 2017 through September 30, 2018  
 Week 44 Posted November 13, 2017

### Respiratory Syncytial Virus (RSV)

The 2017-2018 RSV season starts on 10/1/2017(week 40) and continues through 9/30/2018(week 39). Through week 44(10/29 – 11/04/2017), 35 RSV cases have been laboratory confirmed in Maricopa County.



Compared to last season, at this time, Laboratory-Confirmed RSV Cases are down in Maricopa County.

|   | Cumulative Season | Current Week |
|---|-------------------|--------------|
| 2017-2018                               | 35                | 7            |
| 2016-2017                               | 35                | 13           |
| 5 season average                        | 17                | 5            |
| % increase compared to 2016-2017 season | 0%                | -46%         |
| % increase compared to 5 season average | 108%              | 35%          |
| % increase compared to last week        | 25%               | -42%         |

Those less than one year of age are most effected by RSV.

| Age Group   | Cases | Cases per 100,000 population |
|-------------|-------|------------------------------|
| Age <1      | 20    | 37                           |
| Age 1 - 4   | 10    | 4                            |
| Age 5 - 17  | 0     | 0                            |
| Age 18 - 64 | 2     | 0                            |
| Age 65 +    | 3     | 1                            |



**Maricopa County Department of Public Health**  
**RSV Update**  
**October 1, 2017 through September 30, 2018**  
**Week 44 Posted November 13, 2017**

***The Maricopa County Department of Public Health wishes to thank all of the  
Influenza surveillance participants:***

*Arizona Department of Health Services*

*Local Hospital Emergency Departments & Infection Control Practitioners*

*Local Outpatient Facilities and Medical Directors*

*Maricopa County Public Schools*

*Maricopa County Office of Vital Statistics*

***Questions about this report may be directed to:***

***[epidemiology@mail.maricopa.gov](mailto:epidemiology@mail.maricopa.gov)***

***Information on influenza activity for the state, the U.S. and the world may be found  
at the following websites:***

***<http://www.azdhs.gov/phs/oids/epi/flu/index.htm> (ADHS)***

***<https://www.cdc.gov/flu/weekly/fluactivitysurv.htm> (CDC)***

***[http://www.who.int/influenza/gisrs\\_laboratory/updates/en/index.html](http://www.who.int/influenza/gisrs_laboratory/updates/en/index.html) (WHO)***