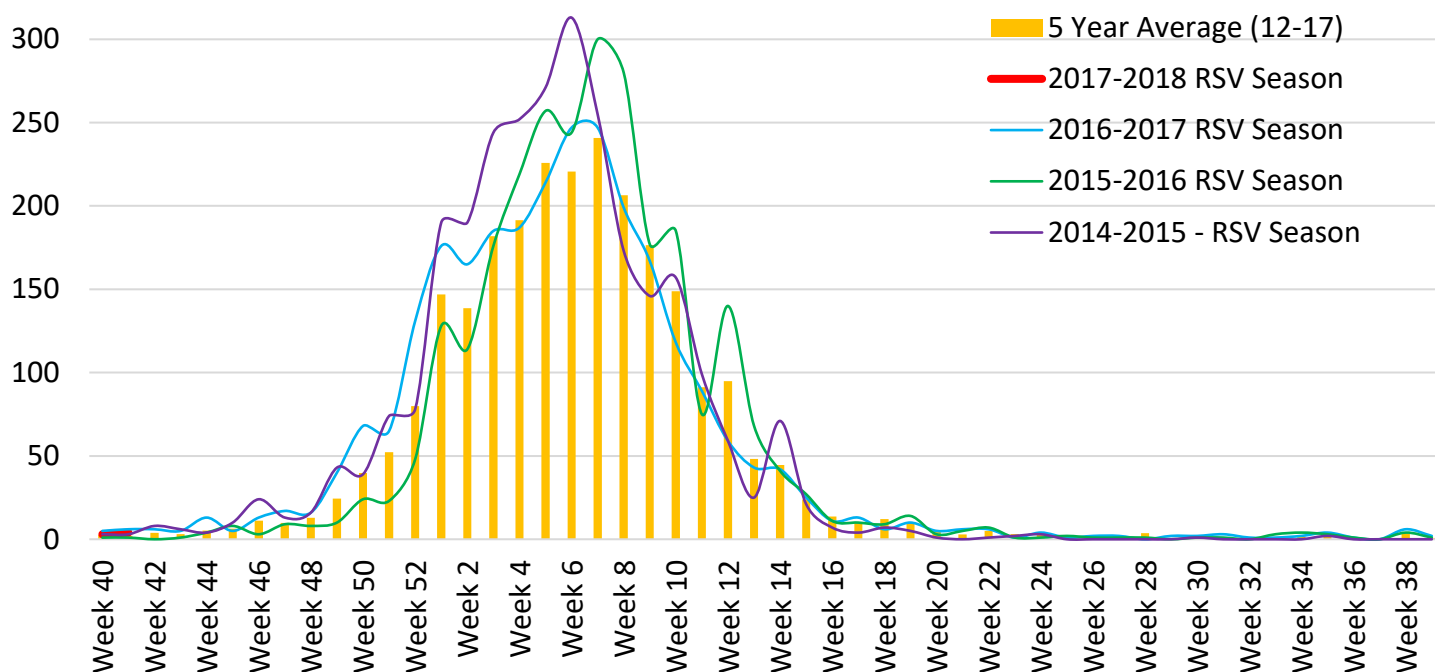




Maricopa County Department of Public Health
RSV Update
October 1, 2017 through September 30, 2018
Posted October 20, 2017

Respiratory Syncytial Virus (RSV)

The 2017-2018 RSV season starts on 10/1/2017(week 40) and continues through 9/30/2018(week 39). Through week 41(10/8 – 10/14/2017), 7 RSV cases have been laboratory confirmed in Maricopa County.



Compared to last season, at this time, Laboratory-Confirmed RSV Cases are down in Maricopa County.

	Cumulative Season	Current Week
2017-2018	7	4
2016-2017	11	6
5 season average	5	2
<i>% increase compared to 2016-2017 season</i>	-36%	-33%
<i>% increase compared to 5 season average</i>	46%	82%
<i>% increase compared to last week</i>	133%	33%

Those less than one year of age are most effected by RSV.

Age Group	Cases	Cases per 100,000 population
Age <1	5	9
Age 1 - 4	2	1
Age 5 - 17	0	0
Age 18 - 64	0	0
Age 65 +	0	0