

Maricopa County Department of Public Health WEEKLY INFLUENZA UPDATE 2016-2017 Season (10/02/2016-09/30/2017)

June 1, 2017

2016-2017 Week 21(05/21/2017-05/27/2017)

The Influenza Season is defined by MMWR surveillance weeks, beginning week 40 (October) and continues through week 39 (the following September).

Table of Contents

- [Lab Confirmed influenza cases](#)
- [Types of influenza](#)
- [P&I Deaths](#)
- [ILI Activity at Hospital Emergency Departments](#)
- [Absentee Activity in Maricopa County Schools](#)

Annual Reports

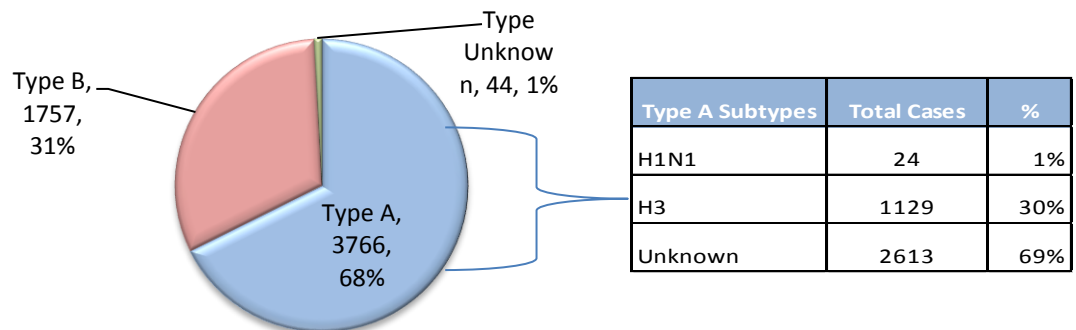


www.FluNearYou.org

The first official day of the 2016-2017 Influenza Season was October 2, 2016 and the surveillance season will continue through September 30, 2017. Maricopa County identified its first locally-acquired influenza case of the 2016-2017 season in week 40 (October 2016).

- Since October 2, 2016, **5567** cases have been laboratory-confirmed
- Arizona reported **REGIONAL** activity for week **21**
- ILI (Influenza like Illness) indicators in all settings took a slight decrease.
- Maricopa County reported 1 Pediatric Influenza Death in week 20

Types of Influenza in Maricopa County



Influenza Activity Levels, 2013-2017

| | 2016-2017 | 2015-2016 | 2014-2015 | 2013-2014 |
|---|--|--------------------------------|------------------------------|---------------------|
| First Confirmed Case, no travel | 10/03/2016 | 10/04/2015 | 10/03/2014 | 10/04/2013 |
| Weeks w/Widespread Activity (AZ) | Week 6 - 9 | Week 5 - 14 | Weeks 1-6 | Weeks 3-8 |
| Weeks w/Hospital ILI above Regional Threshold | Week 49, 52 & 1-21 | Week 51 - 16 | Weeks 50-11 | Weeks 52-9 |
| Weeks w/Outpatient visits above the Threshold | Weeks 47,48, 50-52, 1-3, 5-10, 14, & 17-20 | Weeks 45-52, 1-21, 23, 35 & 36 | Weeks 48, 50-52, 1-10, 12-14 | Weeks 51-52 & 1-11 |
| Peak Week | Week 6 (2/5-2/11/2016) | Week 8 (2/21-2/27/2016) | Week 3 (1/18-24/2015) | Week 6 (2/2-8/2014) |
| Number of Pediatric Deaths | 1 | 3 | 1 | 1 |
| Total Cases | 5,567 | 14,353 | 6,601 | 6,658 |

Maricopa County Department of Public Health
INFLUENZA UPDATE
October 2, 2016 through May 27, 2017
Posted June 1, 2017

Individuals with Laboratory Confirmed Influenza

The 2016-2017 influenza season starts on 10/02/2016 (week 40) and continues through 9/30/2017 (week 39). This influenza season (2016-17), there have been **5,567** laboratory confirmed influenza cases. The State of Arizona has reported **regional activity for Week 21 (5/21 – 5/27/2017)**. The chart below shows influenza laboratory test results. This graph represents each week of the current season (**red**) and previous seasons.

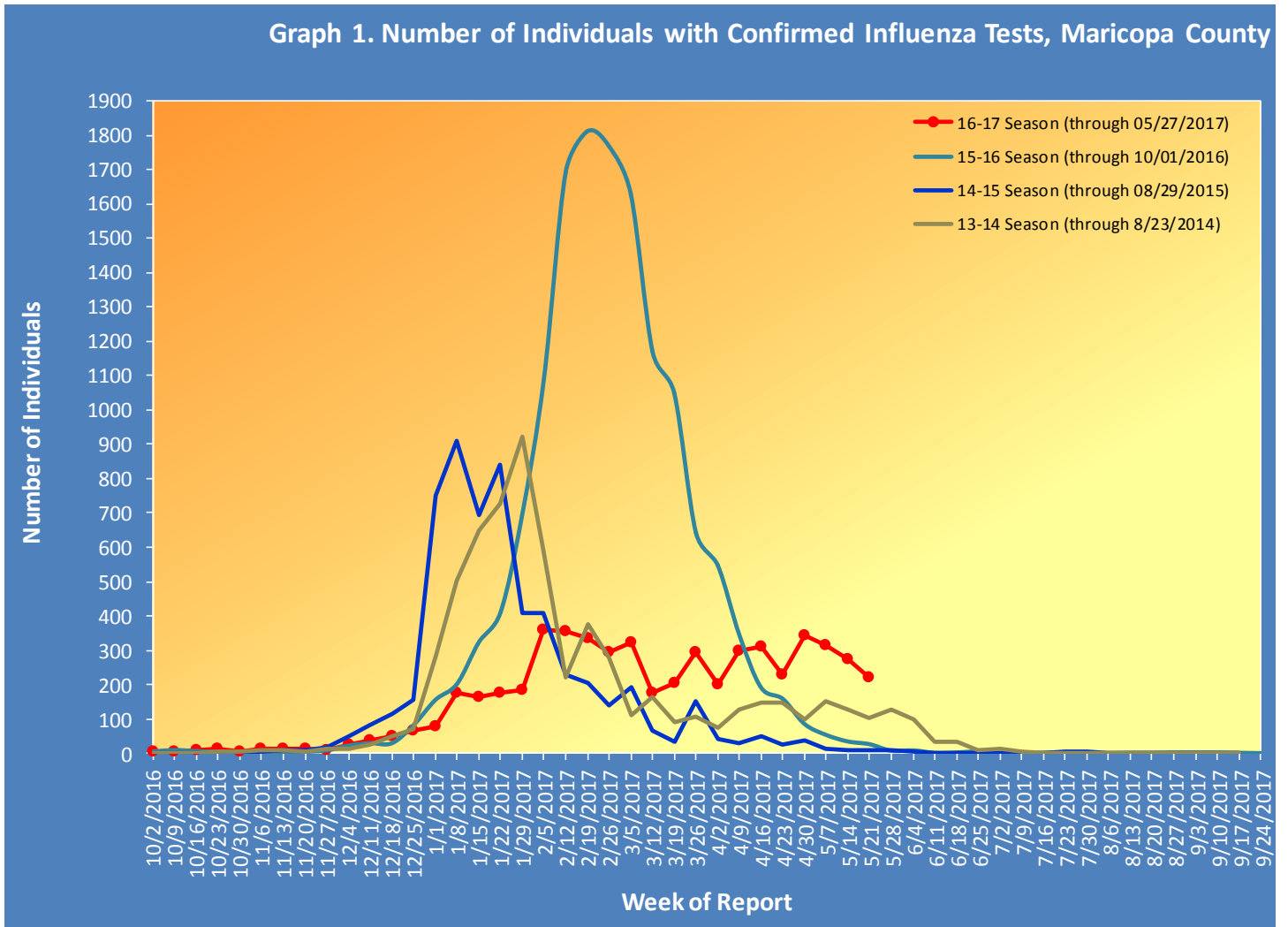


Table 1 shows the number of laboratory-confirmed cases.

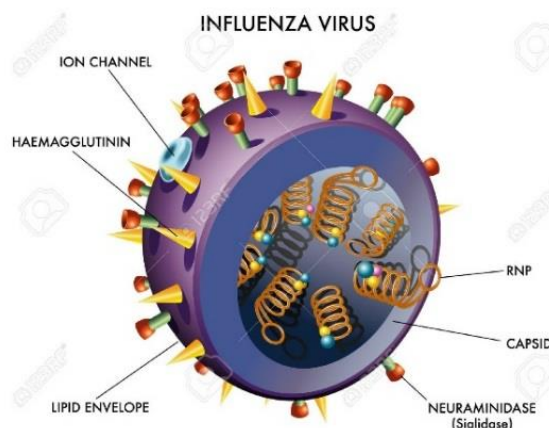
| Table 1. Laboratory-Confirmed Influenza Cases Compared to Last Week and Last Season, Maricopa County | | |
|---|--------------------------------|---------------------------|
| Total | Cumulative Season Total | Current Week Total |
| 2016-2017 | 5567 | 272 |
| 2015-2016 | 14256 | 34 |
| 3 season average | 8575 | 66 |
| <i>% increase compared to 2015-2016 season</i> | -61% | 700% |
| <i>% increase compared to 3 season average</i> | -35% | 312% |
| <i>% increase compared to last week</i> | 5% | -13% |

Types of Influenza

This influenza season **5567** confirmed cases of influenza have been reported.

Table 2 shows the number and percentage of cases reported by influenza type and subtype.

| Table 2. Types/Subtypes of Influenza by Test, 2016-2017 Season, Maricopa | | |
|---|-------------|-------------|
| Total | 5567 | 100% |
| Type A | 3766 | 68% |
| <i>Subtype 2009 H1N1</i> | 24 | 1% |
| <i>Subtype H3</i> | 1129 | 30% |
| <i>Subtyping not performed or unknown</i> | 2613 | 69% |
| Type B | 1757 | 32% |
| Type Unknown | 44 | 1% |

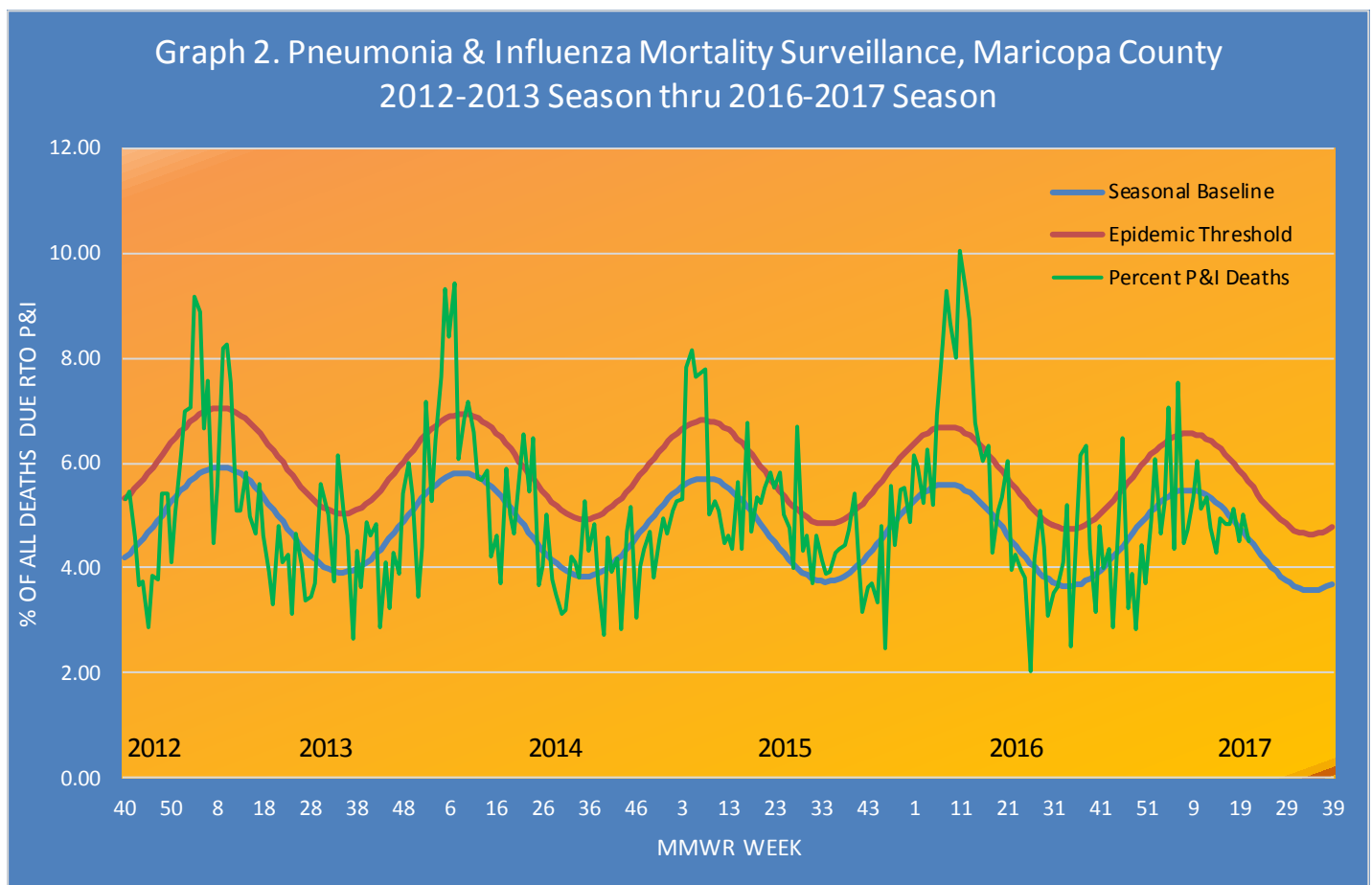


Pneumonia and Influenza (P&I) Deaths

This influenza season there have been **890** pneumonia and influenza (P&I) deaths. There has been **1 influenza mortality in a child and 24** adult influenza related mortality reported this season in Maricopa County.

Table 3 shows the number of P&I deaths and the number of influenza deaths that occurred this season and last season.

| Table 3. Pneumonia and Influenza (P&I) Deaths, 2016-17 & 2015-16 Seasons, Maricopa County | | | | |
|---|--|-----------|---|-----------|
| | Current Season (2016-2017) As of [05/27/2017] | | Last Season (2015-2016) As of [05/28/2016] | |
| | Pneumonia and Influenza | Influenza | Pneumonia and Influenza | Influenza |
| Pediatric (Under Age 18) | 6 | 1 | 12 | 2 |
| Adult (18 and Over) | 884 | 24 | 1124 | 86 |

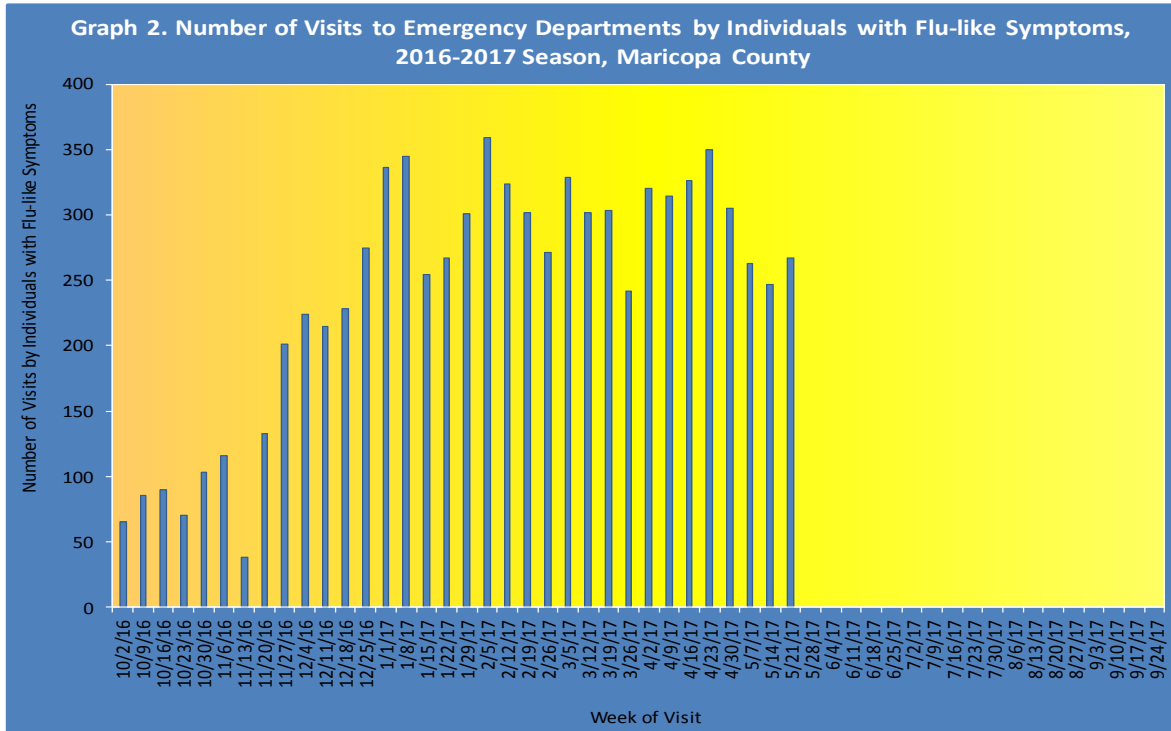


Based on Arizona Department of Vital Registration mortality surveillance data available on **May 21, 2017**, **4.51%** of the deaths occurring during Week **21(5/21-5/27/2017)** were due to P&I. This percentage is **below** the epidemic threshold of **5.65% for week 21**.

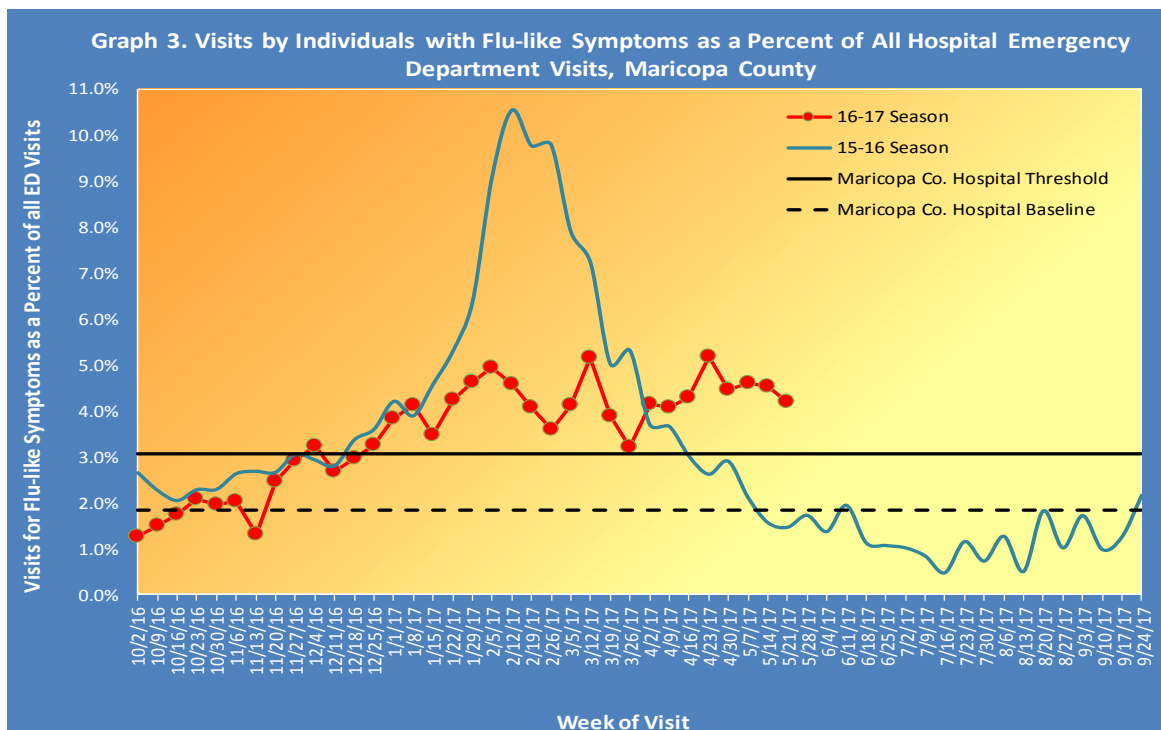
Influenza Like Illness Activity at Hospital Emergency Departments

This influenza season there have been **8170** visits to emergency departments by individuals with flu-like symptoms. To be counted as an individual with flu-like symptoms, the patient must have both fever and cough/sore throat.

Graph 2 shows the number of patients with flu-like symptoms seen at 12 emergency departments.

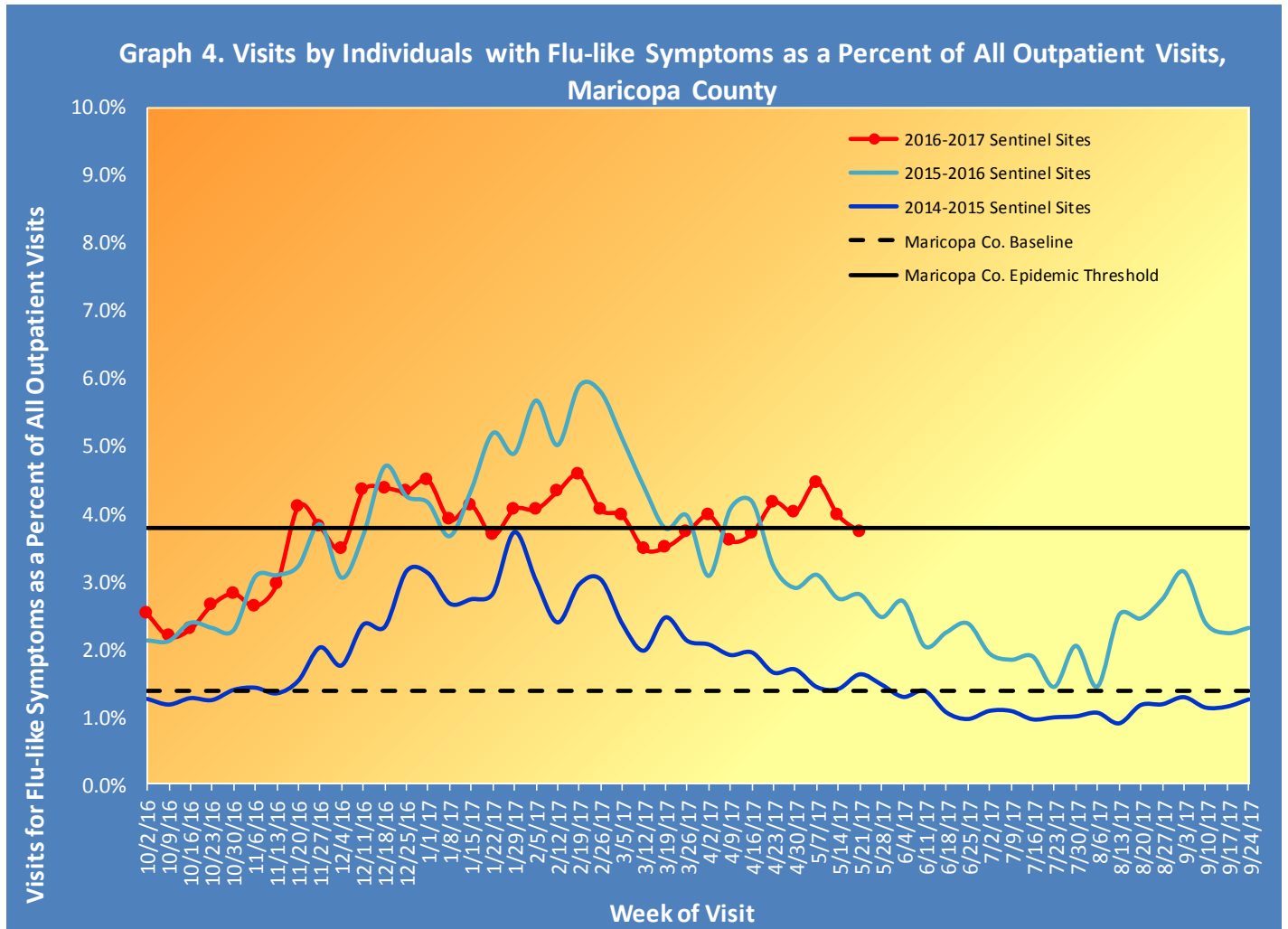


Graph 3 shows what percent of all emergency department visits were individuals with flu-like symptoms (fever and cough/sore throat). The graph shows the trend week by week, with the current season in red.



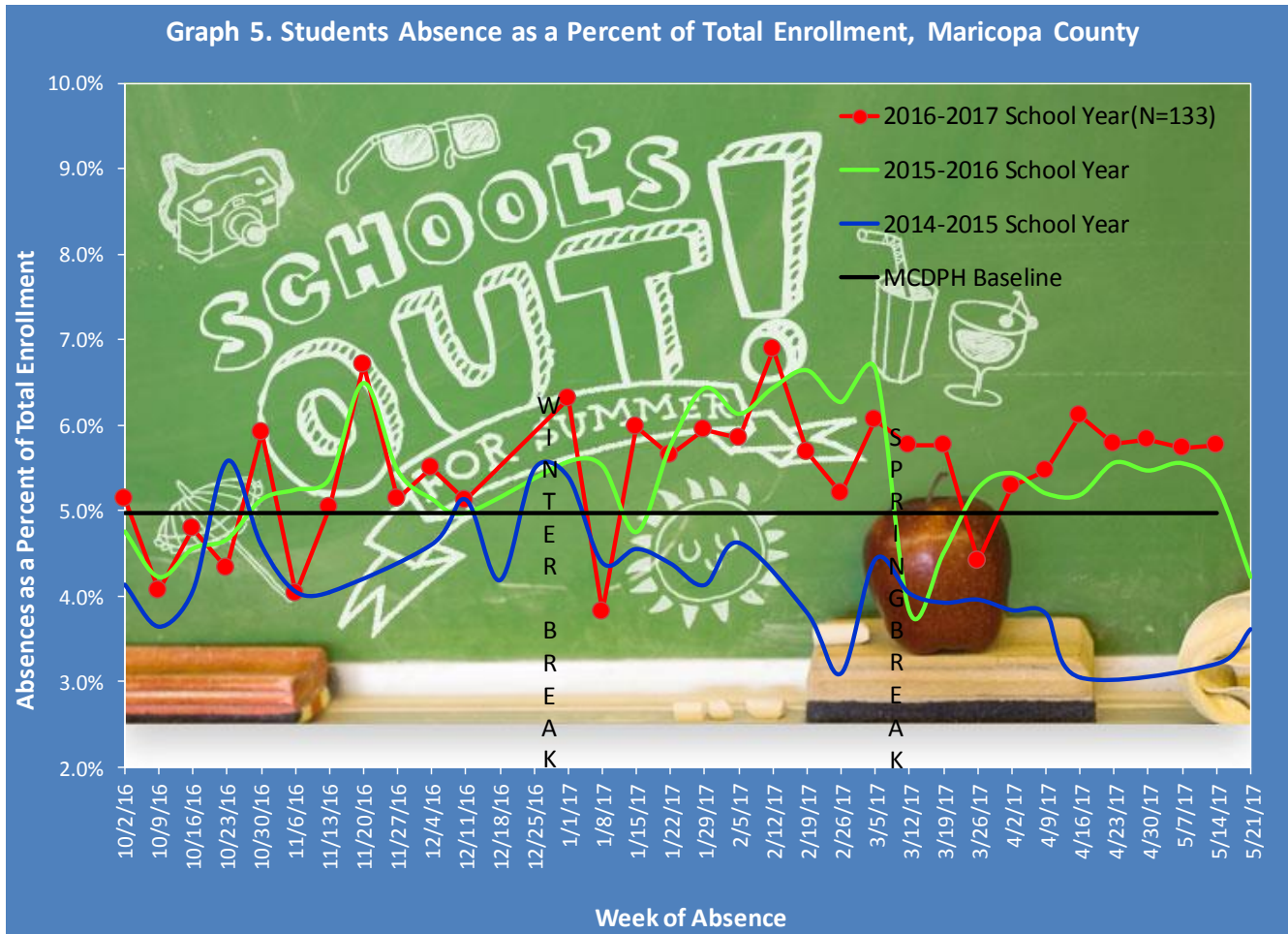
Influenza-Like Illness Activity at Sentinel Site Outpatient Facilities Reported to the Centers for Disease Control and Prevention (CDC)

Maricopa County sentinel sites (outpatient facilities) report visits due to flu-like symptoms. This week, **3.73%** of visits at outpatient facilities were due to flu-like symptoms, last week outpatient facilities reported **3.97%**.



Absentee Activity at Schools

Graph 5 shows the percent of students reported absent and illustrates the week by week trend, for the current school year (No school surveillance due to winter break & spring break or summer vacation).



**The Maricopa County Department of Public Health wishes to thank all of the
Influenza surveillance participants:**

Arizona Department of Health Services

Local Hospital Emergency Departments & Infection Control Practitioners

Local Outpatient Facilities and Medical Directors

Maricopa County Public Schools

Maricopa County Office of Vital Statistics

Questions about this report may be directed to:

epidemiology@mail.maricopa.gov

**Information on influenza activity for the state, the U.S. and the world may be found
at the following websites:**

<http://www.azdhs.gov/phs/oids/epi/flu/index.htm> (ADHS)

<http://www.cdc.gov/flu/weekly/fluactivitysurv.htm> (CDC)

http://www.who.int/influenza/gisrs_laboratory/updates/en/index.html (WHO)