

Maricopa County Department of Public Health WEEKLY INFLUENZA UPDATE 2016-2017 Season (10/02/2016-09/30/2017)

March 23, 2017

2016-2017 Week 11(03/12/2017-03/18/2017)

The Influenza Season is defined by MMWR surveillance weeks, beginning week 40 (October) and continues through week 39 (the following September).

Table of Contents

- [Lab Confirmed influenza cases](#)
- [Types of influenza](#)
- [P&I Deaths](#)
- [ILI Activity at Hospital Emergency Departments](#)
- [Absentee Activity in Maricopa County Schools](#)

Annual Reports

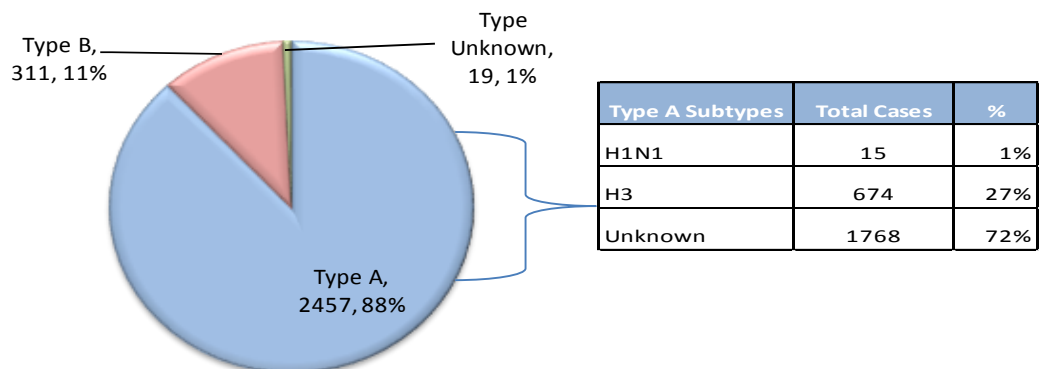


www.FluNearYou.org

The first official day of the 2016-2017 Influenza Season was October 2, 2016 and the surveillance season will continue through September 30, 2017. Maricopa County identified its first locally-acquired influenza case of the 2016-2017 season in week 40 (October 2016).

- Since October 2, 2016, **2787** cases have been laboratory-confirmed
- Arizona reported **REGIONAL** activity for week 11
- ILI (Influenza like Illness) is decreasing in Outpatient Clinics.

Types of Influenza in Maricopa County



Influenza Activity Levels, 2013-2017

	2016-2017	2015-2016	2014-2015	2013-2014
First Confirmed Case, no travel	10/03/2016	10/04/2015	10/03/2014	10/04/2013
Weeks w/Widespread Activity (AZ)	Week 6 - 9	Week 5 - 14	Weeks 1-6	Weeks 3-8
Weeks w/Hospital ILI above Regional Threshold	Week 49, 52 & 1-11	Week 51 - 16	Weeks 50-11	Weeks 52-9
Weeks w/Outpatient visits above the Threshold	Weeks 47,48, 50 - 52 & 1-3 & 5-11	Weeks 45-52, 1-21, 23, 35 & 36	Weeks 48, 50-52, 1-10, 12-14	Weeks 51-52 & 1-11
Peak Week	Week 6 (2/5-2/11/2016)	Week 8 (2/21-2/27/2016)	Week 3 (1/18-24/2015)	Week 6 (2/2-8/2014)
Number of Pediatric Deaths	0	3	1	1
Total Cases	2787	14,353	6,601	6,658

**Maricopa County Department of Public Health
INFLUENZA UPDATE
October 2, 2016 through March 18, 2017
Posted March 23, 2017**

Individuals with Laboratory Confirmed Influenza

The 2016-2017 influenza season starts on 10/02/2016 (week 40) and continues through 9/30/2017 (week 39). This influenza season (2016-17), there have been **2787** laboratory confirmed influenza cases. The State of Arizona has reported **regional activity for Week 11 (3/12 – 3/18/2017)**. The chart below shows influenza laboratory test results. This graph represents each week of the current season (**red**) and previous seasons. (These numbers are provisional due to a slight back-log in data-entry.)

Graph 1. Number of Individuals with Confirmed Influenza Tests, Maricopa County

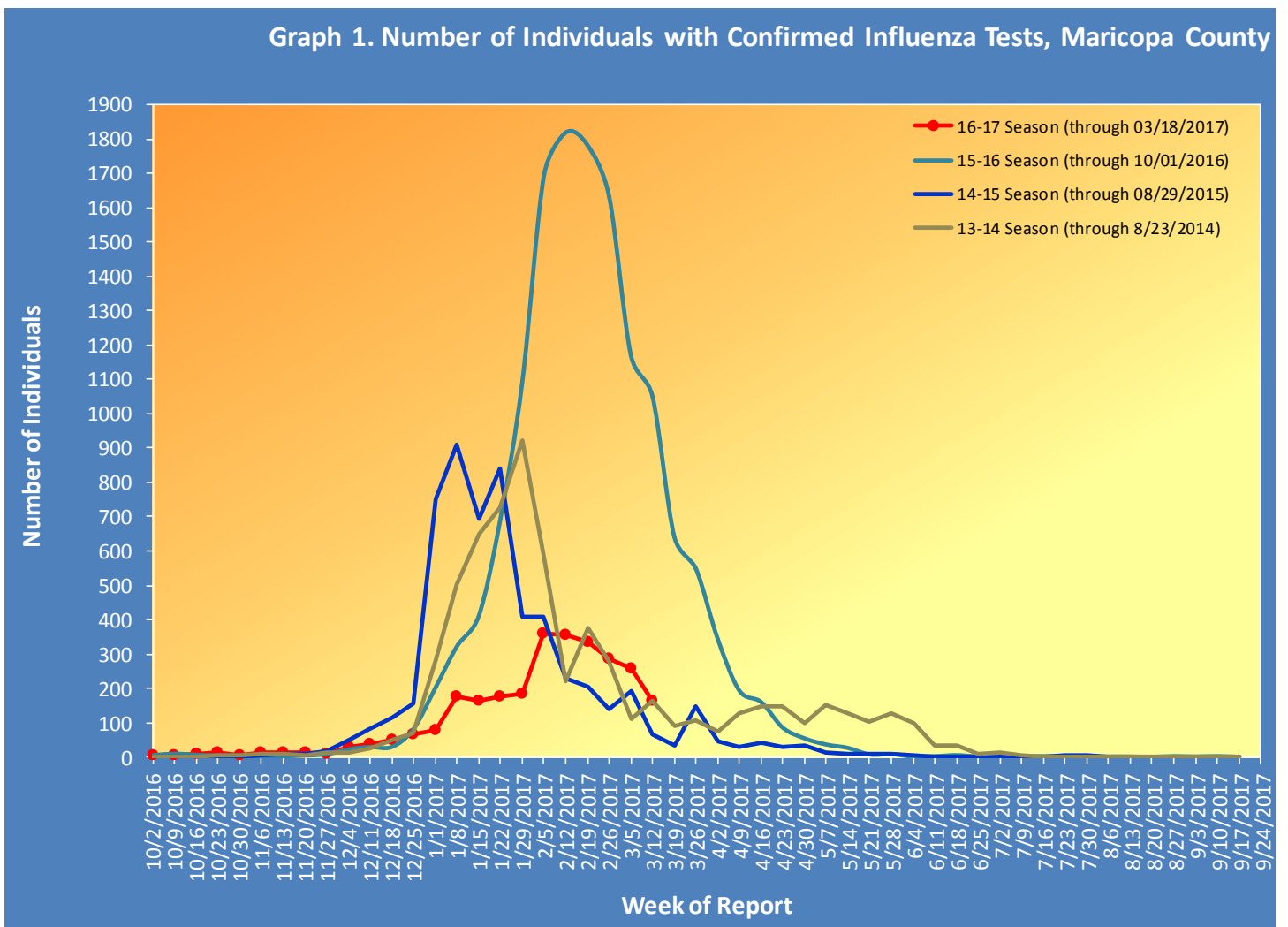


Table 1 shows the number of laboratory-confirmed cases.

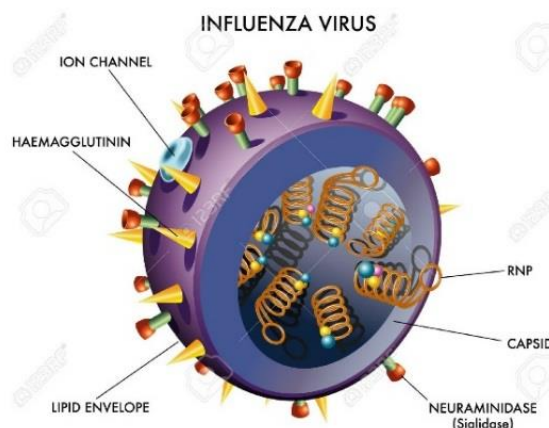
Table 1. Laboratory-Confirmed Influenza Cases Compared to Last Week and Last Season, Maricopa County		
Total	Cumulative Season Total	Current Week Total
2016-2017	2787	163
2015-2016	11181	1171
3 season average	7036	491
<i>% increase compared to 2015-2016 season</i>	-75%	-86%
<i>% increase compared to 3 season average</i>	-60%	-67%
<i>% increase compared to last week</i>	6%	-37%

Types of Influenza

This influenza season **2787** confirmed cases of influenza have been reported.

Table 2 shows the number and percentage of cases reported by influenza type and subtype.

Table 2. Types/Subtypes of Influenza by Test, 2016-2017 Season, Maricopa		
Total	2787	100%
Type A	2457	88%
<i>Subtype 2009 H1N1</i>	15	1%
<i>Subtype H3</i>	674	27%
<i>Subtyping not performed or unknown</i>	1768	72%
Type B	311	11%
Type Unknown	19	1%

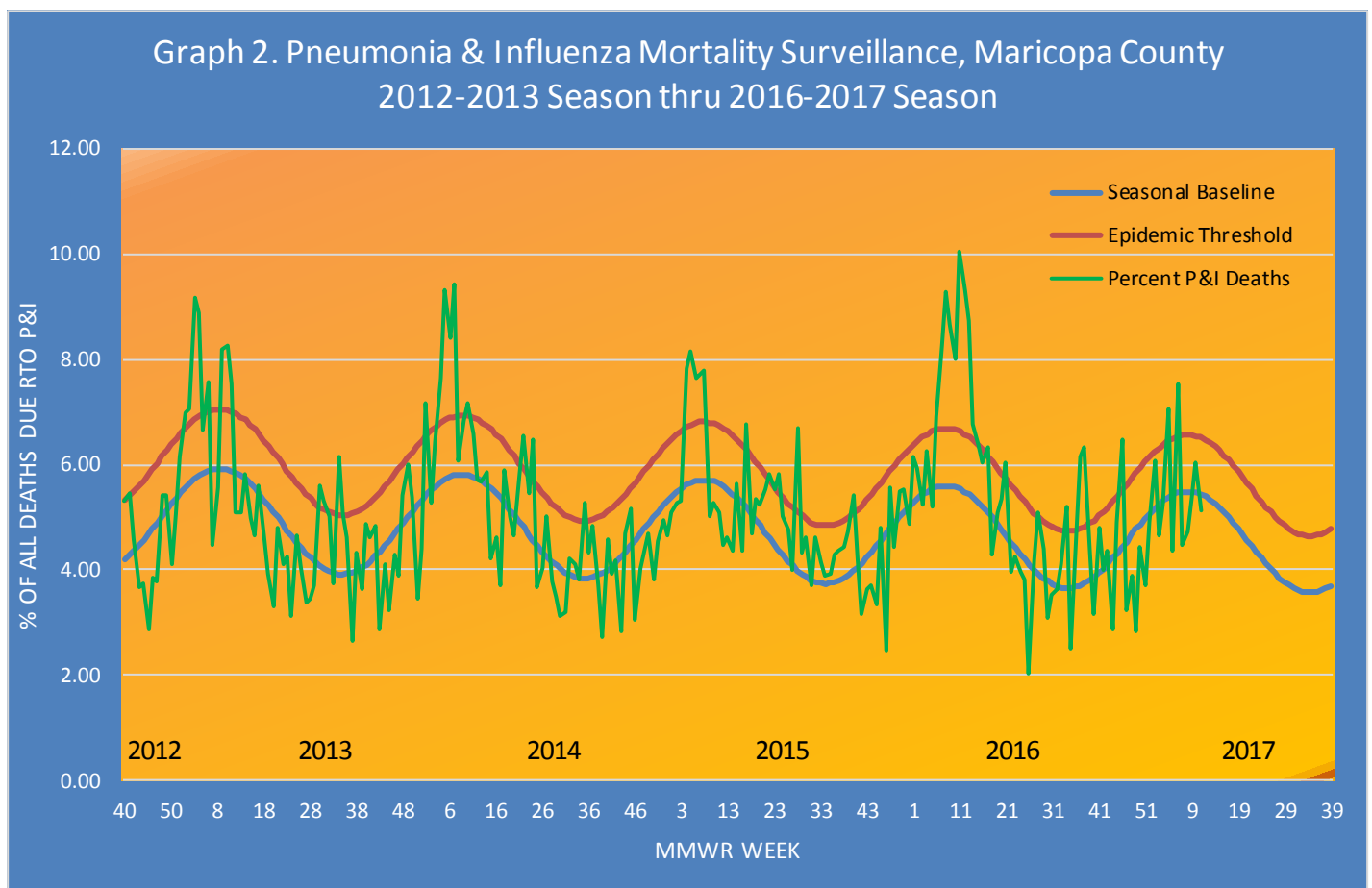


Pneumonia and Influenza (P&I) Deaths

This influenza season there have been **624** pneumonia and influenza (P&I) deaths. There has been **15** adult influenza related mortality reported this season in Maricopa County.

Table 3 shows the number of P&I deaths and the number of influenza deaths that occurred this season and last season.

	Current Season (2016-2017) As of [03/18/2017]		Last Season (2015-2016) As of [03/19/2016]	
	Pneumonia and Influenza	Influenza	Pneumonia and Influenza	Influenza
Pediatric (Under Age 18)	5	0	10	2
Adult (18 and Over)	619	15	773	57

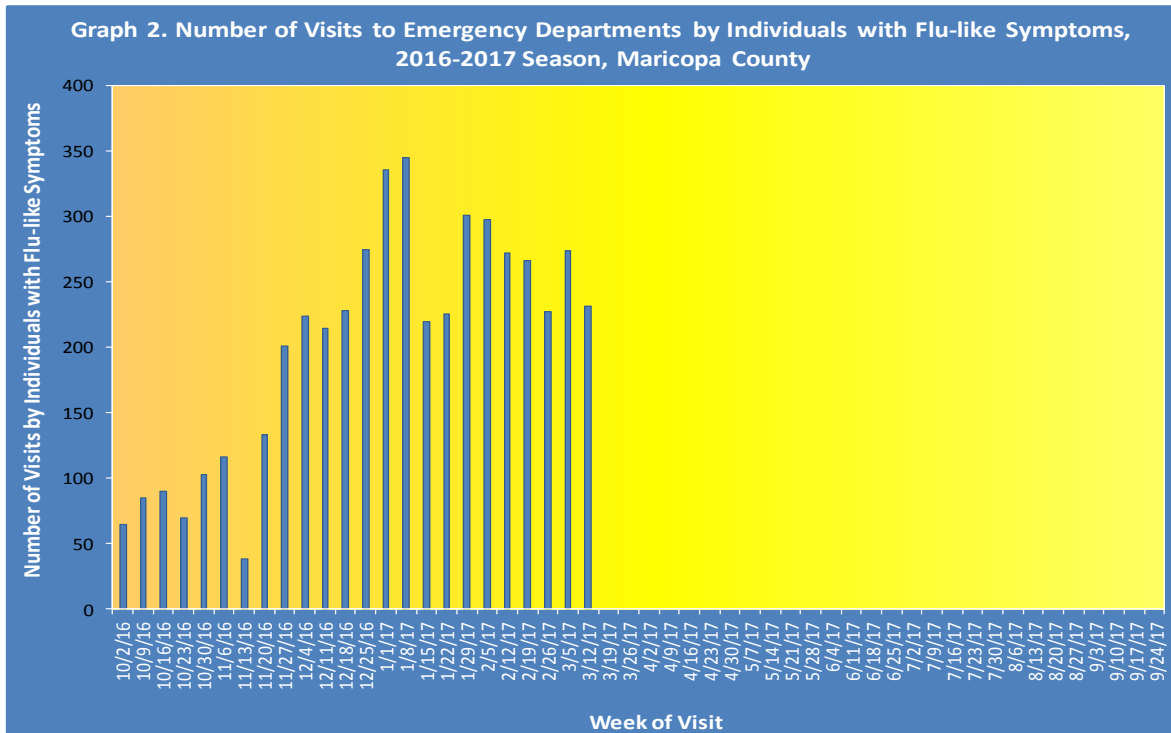


Based on Arizona Department of Vital Registration mortality surveillance data available on **March 18, 2017**, **5.14%** of the deaths occurring during Week **11(3/12-3/18/2017)** were due to P&I. This percentage is **below** the epidemic threshold of **5.44% for week 11**.

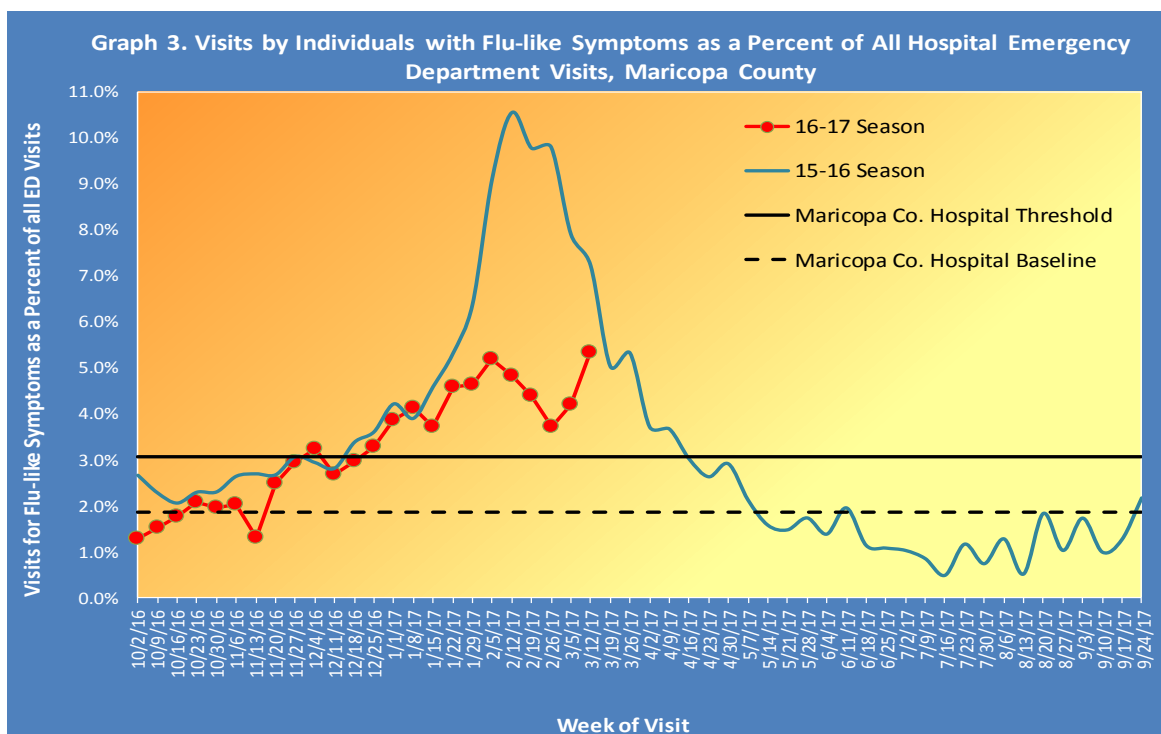
Influenza Like Illness Activity at Hospital Emergency Departments

This influenza season there have been **4812** visits to emergency departments by individuals with flu-like symptoms. To be counted as an individual with flu-like symptoms, the patient must have both fever and cough/sore throat.

Graph 2 shows the number of patients with flu-like symptoms seen at 12 emergency departments.

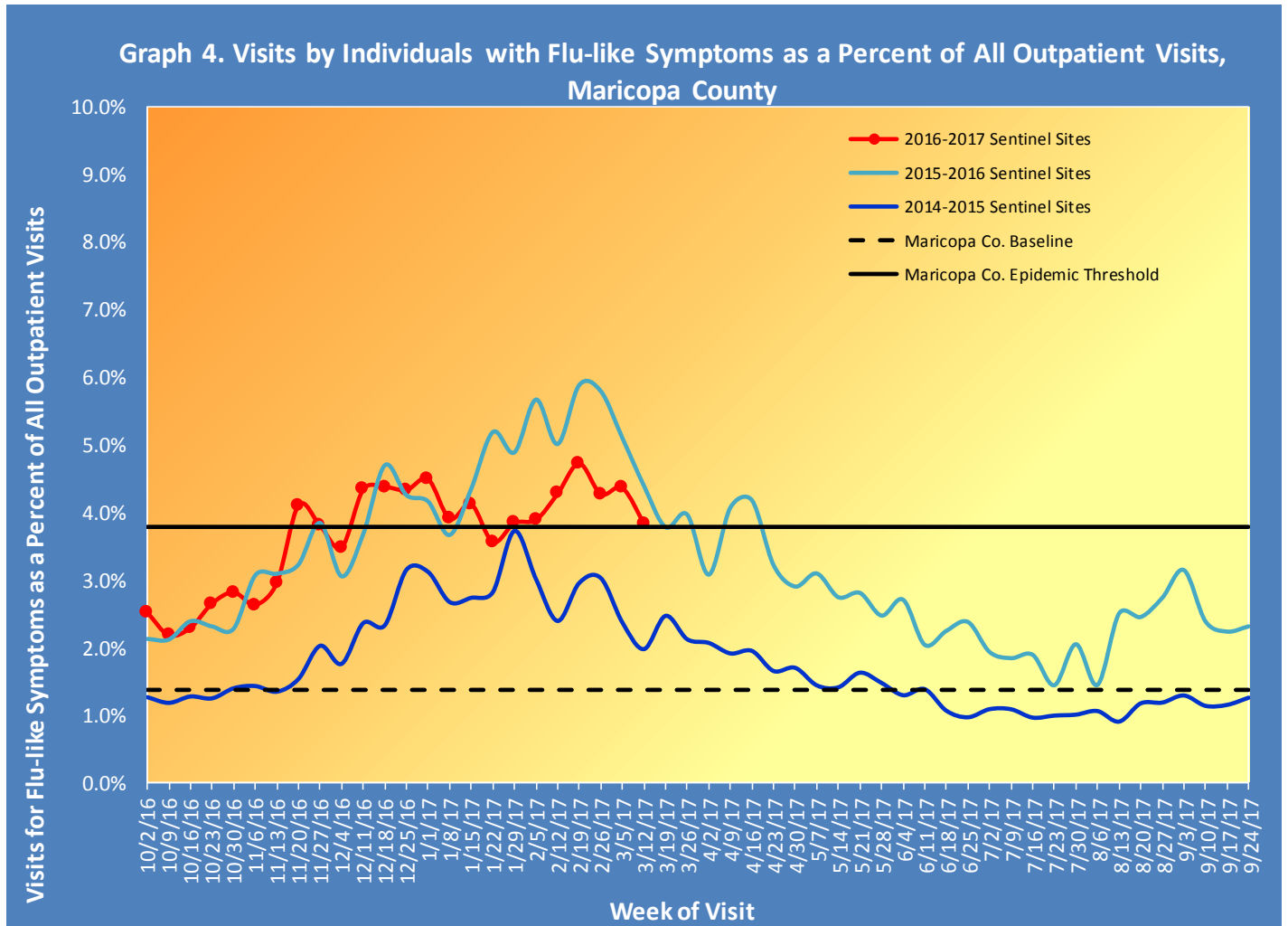


Graph 3 shows what percent of all emergency department visits were individuals with flu-like symptoms (fever and cough/sore throat). The graph shows the trend week by week, with the current season in red.



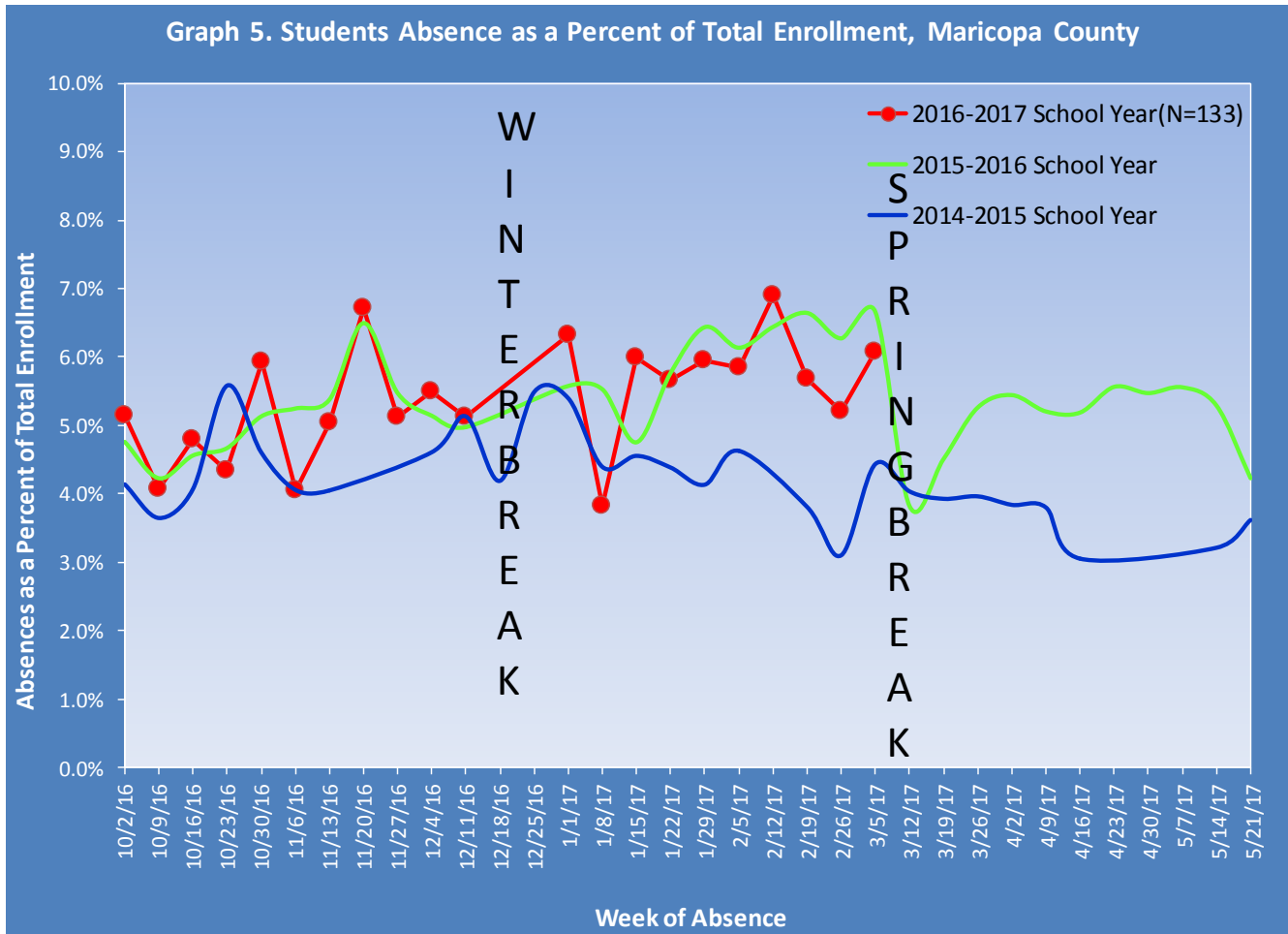
Influenza-Like Illness Activity at Sentinel Site Outpatient Facilities Reported to the Centers for Disease Control and Prevention (CDC)

Maricopa County sentinel sites (outpatient facilities) report visits due to flu-like symptoms. This week, **3.83%** of visits at outpatient facilities were due to flu-like symptoms, last week outpatient facilities reported **4.36%**.



Absentee Activity at Schools

Graph 5 shows the percent of students reported absent and illustrates the week by week trend, for the current school year (No school surveillance due to winter break & spring break).



**The Maricopa County Department of Public Health wishes to thank all of the
Influenza surveillance participants:**

Arizona Department of Health Services

Local Hospital Emergency Departments & Infection Control Practitioners

Local Outpatient Facilities and Medical Directors

Maricopa County Public Schools

Maricopa County Office of Vital Statistics

Questions about this report may be directed to:

epidemiology@mail.maricopa.gov

**Information on influenza activity for the state, the U.S. and the world may be found
at the following websites:**

<http://www.azdhs.gov/phs/oids/epi/flu/index.htm> (ADHS)

<http://www.cdc.gov/flu/weekly/fluactivitysurv.htm> (CDC)

http://www.who.int/influenza/gisrs_laboratory/updates/en/index.html (WHO)