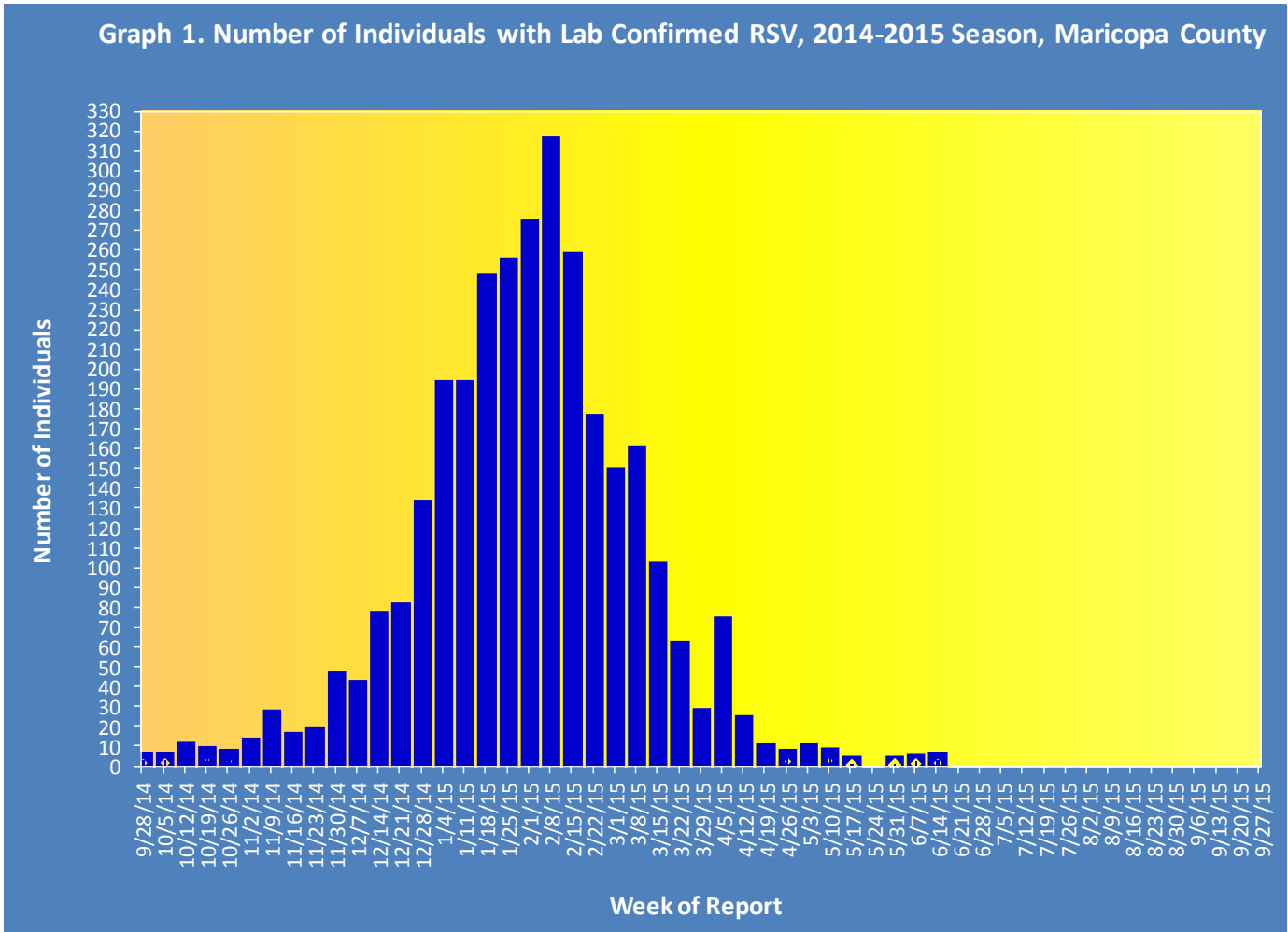


**Maricopa County Department of Public Health**  
**RSV UPDATE**  
**September 28, 2014 through July 4, 2015**  
**Posted July 9, 2015**

Individuals with Laboratory Confirmed Respiratory Syncytial Virus (RSV)

The 2014-2015 RSV season starts on 9/28/2014 (week 40) and continues through 10/3/2015 (week 39). As of Week 25-26 (06/21/2015 – 07/04/2015), there have been 2,947 laboratory confirmed RSV cases.



**Table 1** shows the number of laboratory-confirmed cases reported this season compared to the number of laboratory- confirmed cases reported last week and last season.

Table 1. Laboratory-Confirmed RSV Cases Compared to Last Week and Last Season, Maricopa County		
Total	Cumulative Season Total	Current Week Total
2014-2015	2947	0
2013-2014	1529	3
3 season average*	2460	1.3
% increase compared to 2013-2014 season	93%	-100%
% increase compared to 3 season average	20%	-100%
% increase compared to last week	0.0%	N/A

\*Mean of past 3 RSV seasons

**Graph 2** shows confirmed RSV tests for the current season (red) and previous seasons.

