

**Maricopa County Department of Public Health
RSV UPDATE
September 28, 2014 through May 16, 2015
Posted May 21, 2015**

Individuals with Laboratory Confirmed Respiratory Syncytial Virus (RSV)

The 2014-2015 RSV season starts on 9/28/2014 (week 40) and continues through 10/3/2015 (week 39). As of Week 19 (05/10/2015 – 05/16/15), there have been 2,948 laboratory confirmed RSV cases.

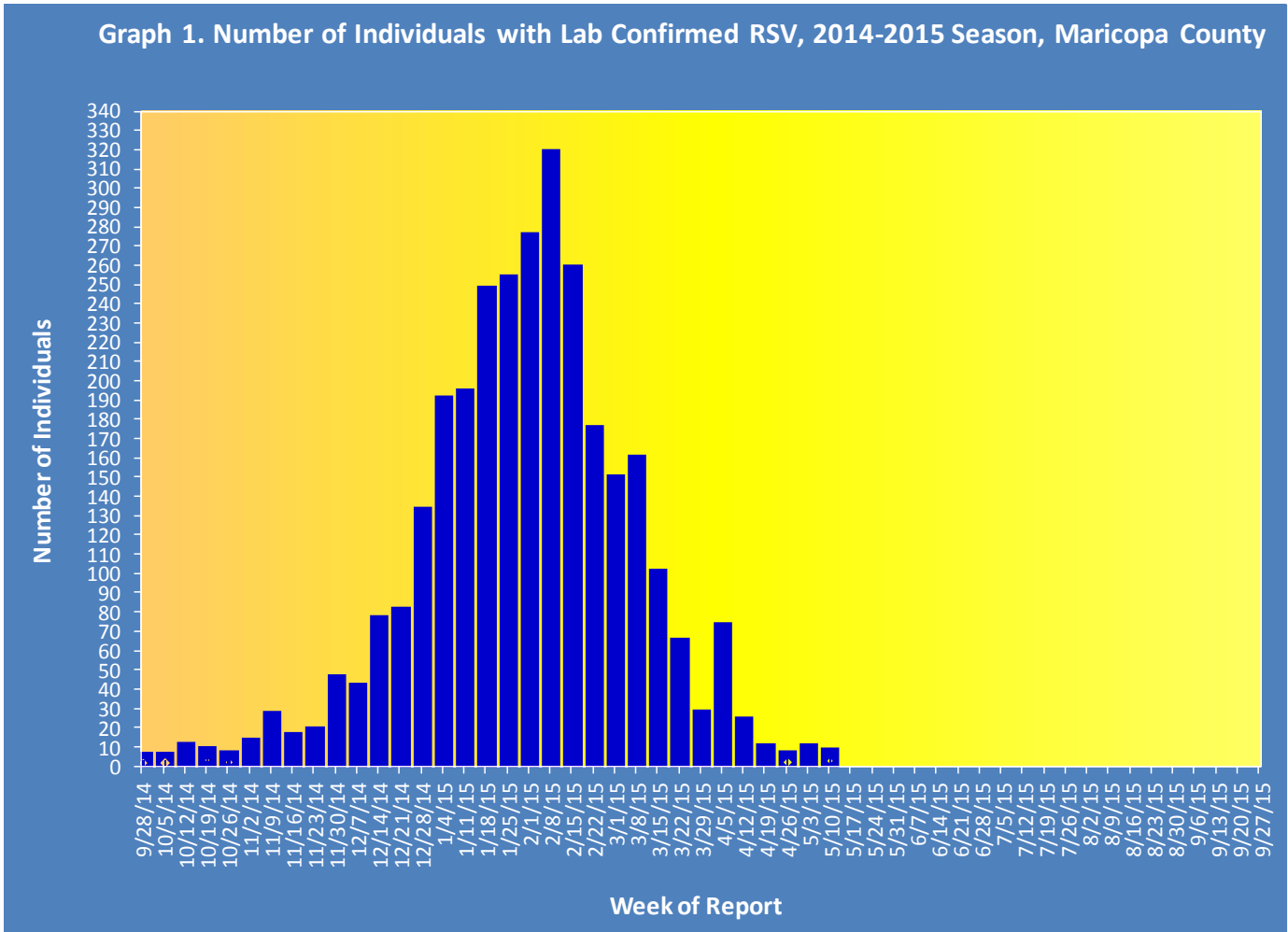


Table 1 shows the number of laboratory-confirmed cases reported this season compared to the number of laboratory- confirmed cases reported last week and last season.

Table 1. Laboratory-Confirmed RSV Cases Compared to Last Week and Last Season, Maricopa County		
Total	Cumulative Season Total	Current Week Total
2014-2015	2948	7
2013-2014	1469	21
3 season average*	2433	15.3
% increase compared to 2013-2014 season	101%	-67%
% increase compared to 3 season average	21%	-54%
% increase compared to last week	0.2%	75%

*Mean of past 3 RSV seasons

Graph 2 shows confirmed RSV tests for the current season (red) and previous seasons.

