

**Maricopa County Department of Public Health
RSV UPDATE
September 28, 2014 through June 13, 2015
Posted June 18, 2015**

Individuals with Laboratory Confirmed Respiratory Syncytial Virus (RSV)

The 2014-2015 RSV season starts on 9/28/2014 (week 40) and continues through 10/3/2015 (week 39). As of Week 23 (06/07/2015 – 06/13/15), there have been 2,951 laboratory confirmed RSV cases.

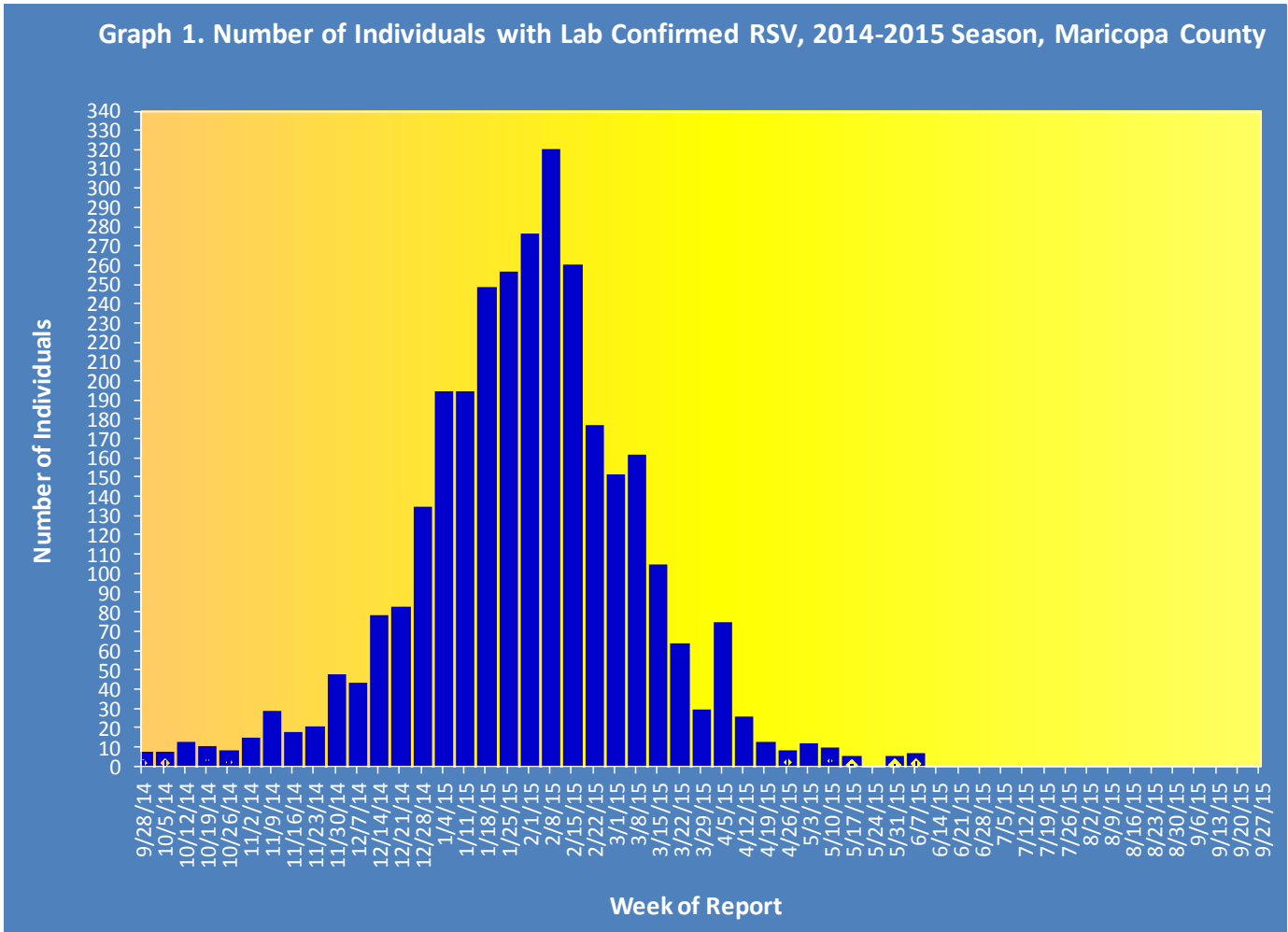


Table 1 shows the number of laboratory-confirmed cases reported this season compared to the number of laboratory-confirmed cases reported last week and last season.

Table 1. Laboratory-Confirmed RSV Cases Compared to Last Week and Last Season, Maricopa County		
Total	Cumulative Season Total	Current Week Total
2014-2015	2951	2
2013-2014	1512	7
3 season average*	2455	4.3
% increase compared to 2013-2014 season	95%	-71%
% increase compared to 3 season average	20%	-53%
% increase compared to last week	0.1%	100%

*Mean of past 3 RSV seasons

Graph 2 shows confirmed RSV tests for the current season (red) and previous seasons.

