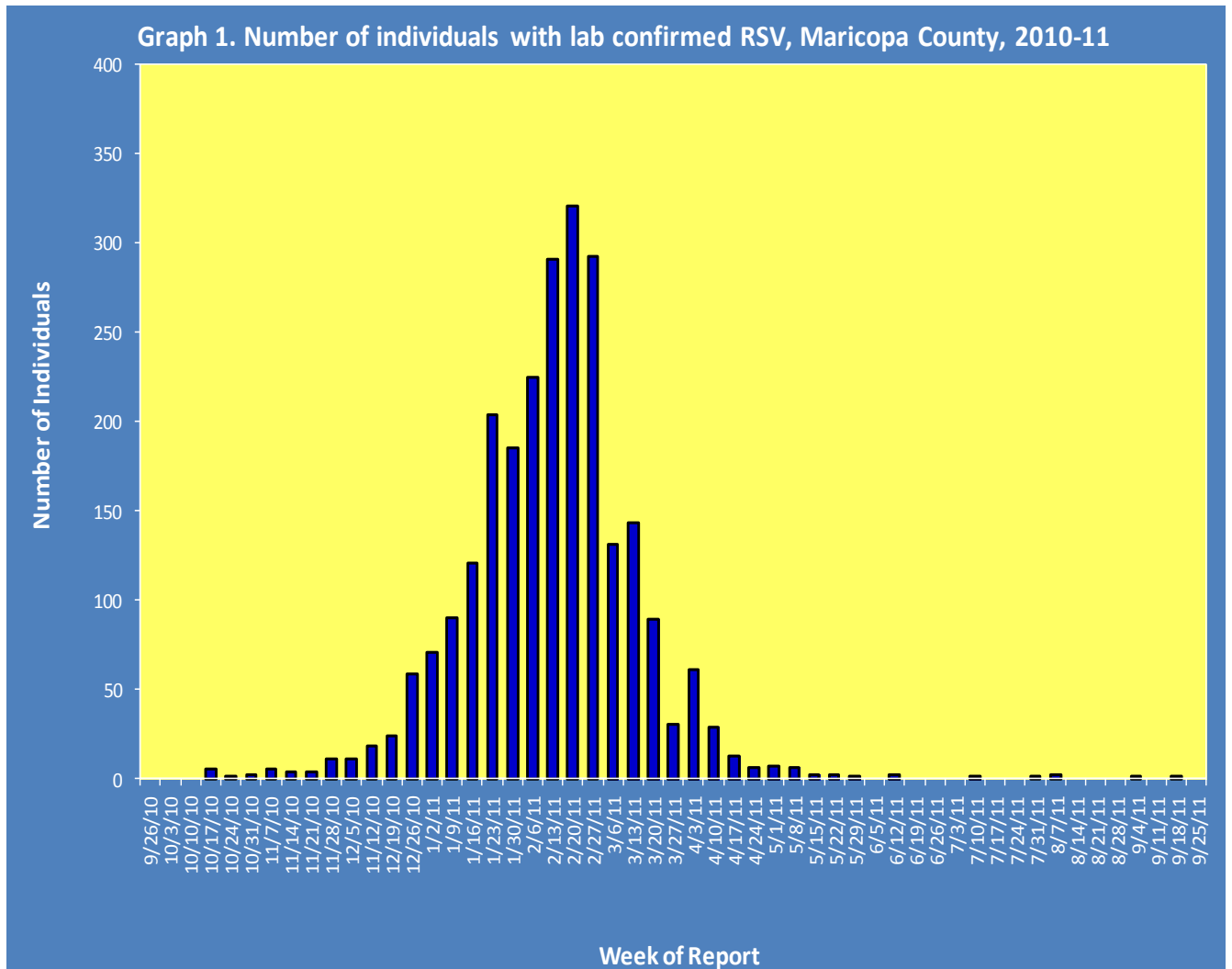


Maricopa County Department of Public Health
RSV UPDATE
September 26, 2010 through September 24, 2011
Posted October 4, 2011

Individuals with Laboratory Confirmed Respiratory Syncytial Virus (RSV)

This RSV season (2010-11), there have been 2,473 individuals confirmed with an RSV test. Graph 1 shows the number of individuals with a confirmed RSV test. The broken bars represent weeks for which all data has not been received.



Graph 2 shows confirmed RSV tests for the current season (red) and previous seasons. The broken line represents weeks for which all tests were not received.

