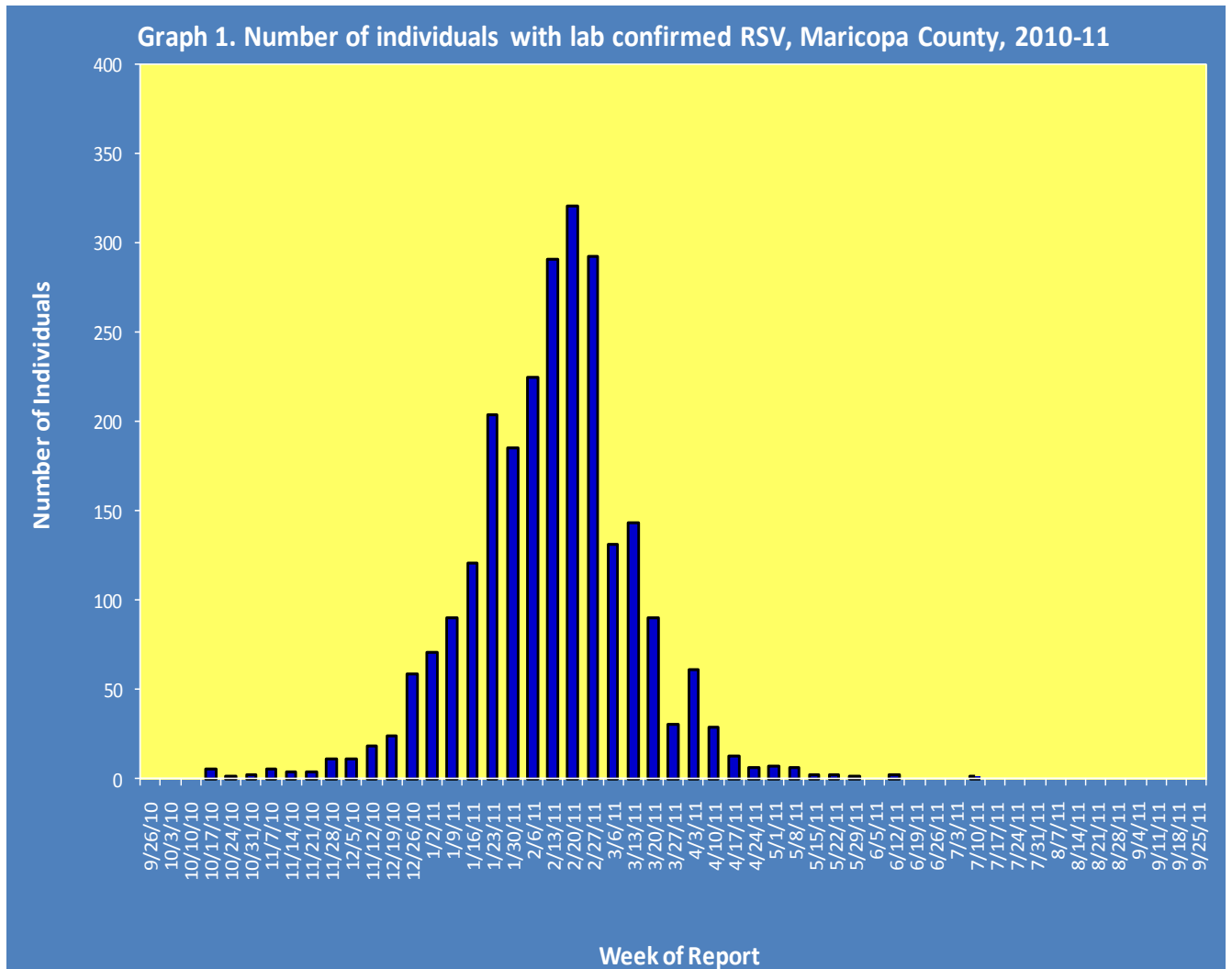


**Maricopa County Department of Public Health  
RSV UPDATE  
September 26, 2010 through July 16, 2011  
Posted July 25, 2011**

Individuals with Laboratory Confirmed Respiratory Syncytial Virus (RSV)

This RSV season (2010-11), there have been 2,469 individuals confirmed with an RSV test. Graph 1 shows the number of individuals with a confirmed RSV test. The broken bars represent weeks for which all data has not been received.



Graph 2 shows confirmed RSV tests for the current season (red) and previous seasons. The broken line represents weeks for which all tests were not received.

