

## Maricopa County Department of Public Health WEEKLY INFLUENZA UPDATE 2015-2016 Season (10/04/2015-10/01/2016)

Reported February 18, 2016

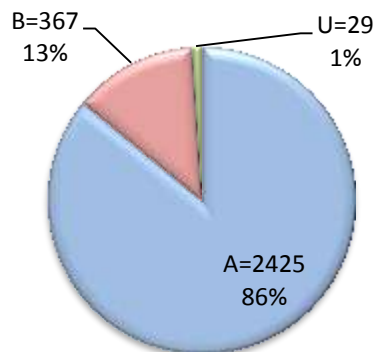
2015-2016 Week 6(02/07/2016-02/13/2016)

*The Influenza Season is defined by MMWR surveillance weeks, beginning week 40 (October) and continues through week 39 (the following September).*

The first day of the 2015-2016 influenza season was October 4, 2015 and the surveillance season will continue through October 1, 2016. Maricopa County identified its first locally-acquired influenza case of the 2015-2016 season in week 40.

- 2821 cases have been laboratory-confirmed (numbers are provisional based on back-log of data entry)
- Arizona reported **Widespread** activity
- ILI activity is increasing
- One pediatric death reported

### Types of Influenza in Maricopa County

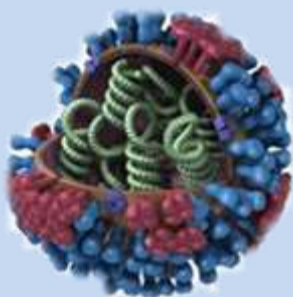


Subtypes of Influenza A	Number of Cases	%
A(H1N1)2009	294	12%
A/H3	69	3%
Un-Subtyped	2062	85%

### Table of Contents

- [Lab Confirmed influenza cases](#)
- [Types of influenza](#)
- [P&I Deaths](#)
- [ILI Activity at Hospital Emergency Departments](#)
- [Absentee Activity in Maricopa County Schools](#)

### Annual Reports



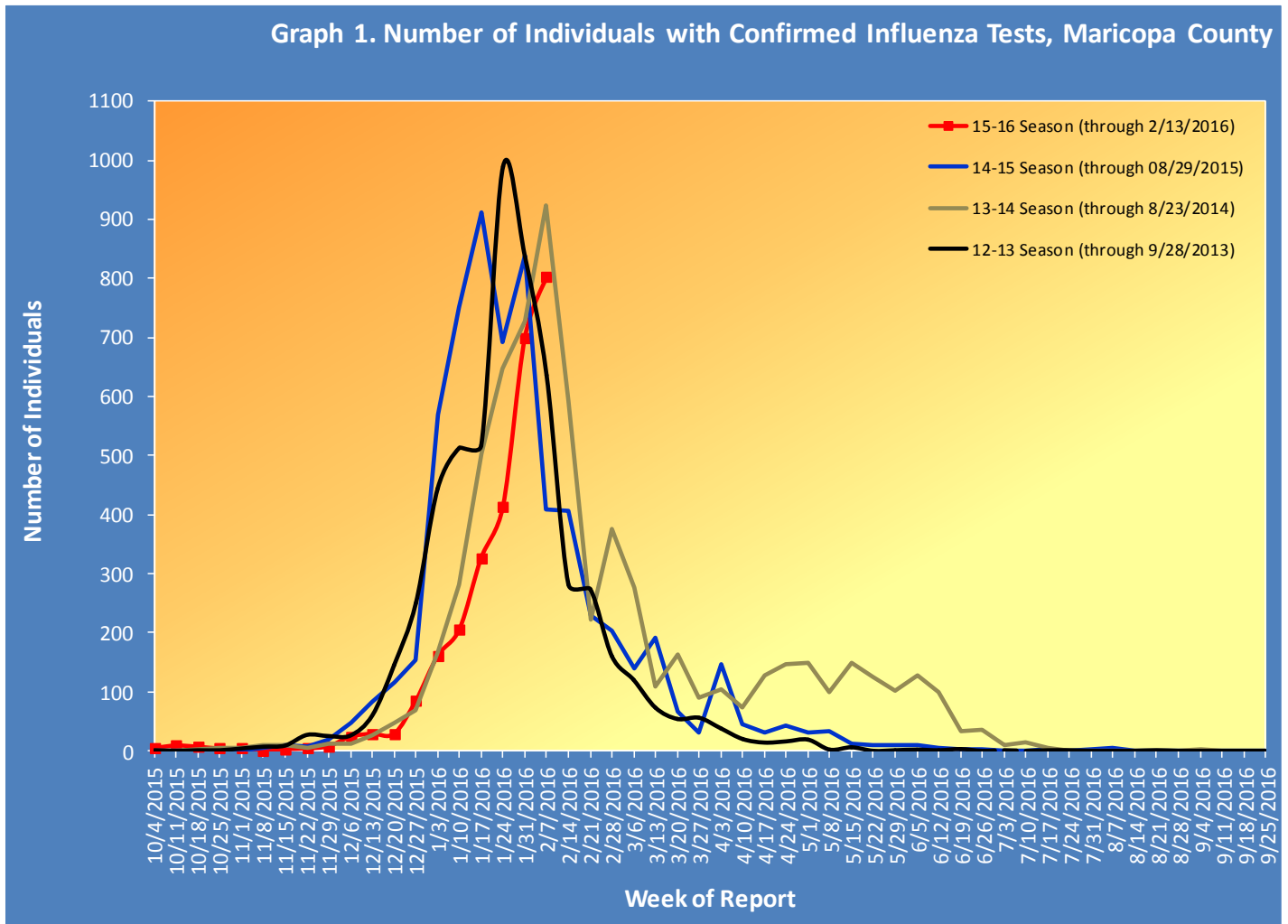
### Influenza Activity Levels, 2012-2016

	2015-2016	2014-2015	2013-2014	2012-2013
First Confirmed Case, no travel	10/04/2015	10/03/2014	10/04/2013	10/30/2012
Weeks w/Widespread Activity (AZ)	Week 5-6 (1/31-2/13/2016)	Weeks 1-6 (1/4-2/14/2015)	Weeks 3-8 (1/12-2/22/2014)	Weeks 1-7 (3/11-4/7/2012)
Weeks w/Hospital ILI above Regional Threshold	Week 51 - 5 (12/20/2015-2/13/2016)	Weeks 50-11 (12/7-3/21/2015)	Weeks 52-9 (12/22-3/1/2014)	Weeks 1-9 (12/16-3/2/2013)
Peak Week	N/A	Week 3 (1/18-24/2015)	Week 6 (2/2-8/2014)	Week 4 (1/20-26/2013)
Number of Pediatric Deaths	1	1	1	0
Total Cases	2821	6,601	6,658	5,638

**Maricopa County Department of Public Health  
INFLUENZA UPDATE  
October 4, 2015 through February 13, 2016  
Posted February 18, 2016**

**Individuals with Laboratory Confirmed Influenza**

The 2015-2016 influenza season starts on 10/04/2015 (week 40) and continues through 10/01/2016 (week 39). This influenza season (2015-16), there have been **2821** laboratory confirmed influenza cases. The State of Arizona has reported **widespread** activity for **Week 6 (02/07/2016–02/13/2016)**. The chart below shows influenza laboratory test results for each week of the current season (red) and previous seasons.



**Table 1** shows the number of laboratory-confirmed cases

Table 1. Laboratory-Confirmed Influenza Cases Compared to Last Week and Last Season, Maricopa County		
Total	Cumulative Season Total	Current Week Total
2015-2016	2821	802
2014-2015	4938	409
3 season average	4295	656
<i>% increase compared to 2014-2015 season</i>	-43%	96%
<i>% increase compared to 3 season average</i>	-34%	22%
<i>% increase compared to last week</i>	40%	15%

### Types of Influenza

This influenza season **2821** confirmed cases of influenza have been reported.

**Table 2** shows the number and percentage of cases reported by influenza type and subtype.

Table 2. Types/Subtypes of Influenza by Test, 2015-2016 Season, Maricopa County		
Total	2821	100.0%
Type A	2425	86.0%
<i>Subtype 2009 H1N1</i>	294	12.1%
<i>Subtype H3</i>	69	2.8%
<i>Subtyping not performed or unknown</i>	2062	85.0%
Type B	367	13.0%
Type Unknown	29	1.0%

### Pneumonia and Influenza (P&I) Deaths

This influenza season there have been **504** pneumonia and influenza (P&I) deaths. There have been **9** adult and **1** pediatric influenza related mortality reported this season in Maricopa County.

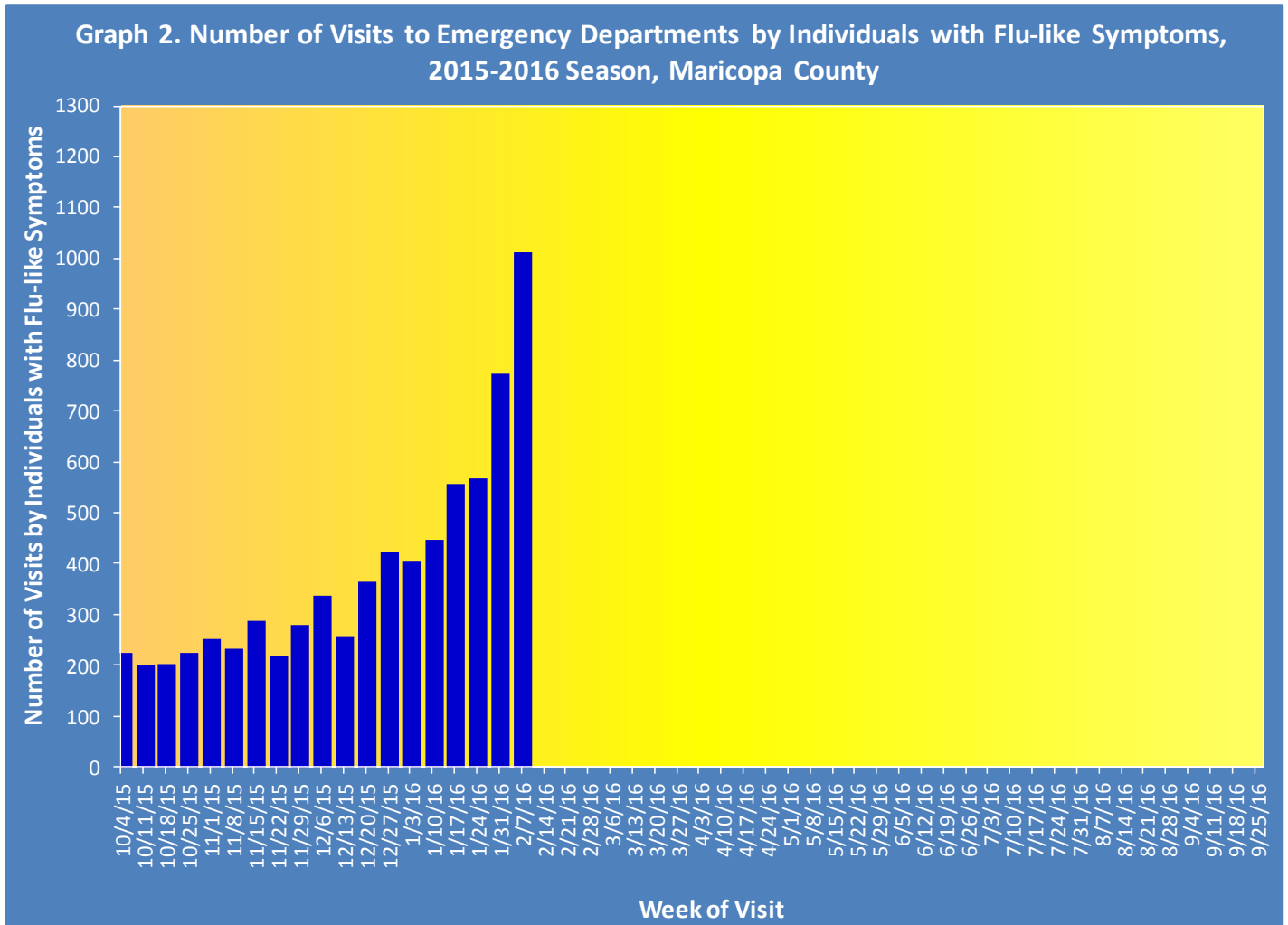
**Table 3** shows the number of P&I deaths and the number of influenza deaths that occurred this season and last season.

Table 3. Pneumonia and Influenza (P&I) Deaths, 2015-16 & 2014-15 Seasons, Maricopa County				
	Current Season (2015-2016) As of [02/13/2016]		Last Season (2014-2015) As of [2/14/2015]	
	Pneumonia and Influenza	Influenza	Pneumonia and Influenza	Influenza
<b>Pediatric (Under Age 18)</b>	8	1	5	1
<b>Adult (18 and Over)</b>	496	9	495	10

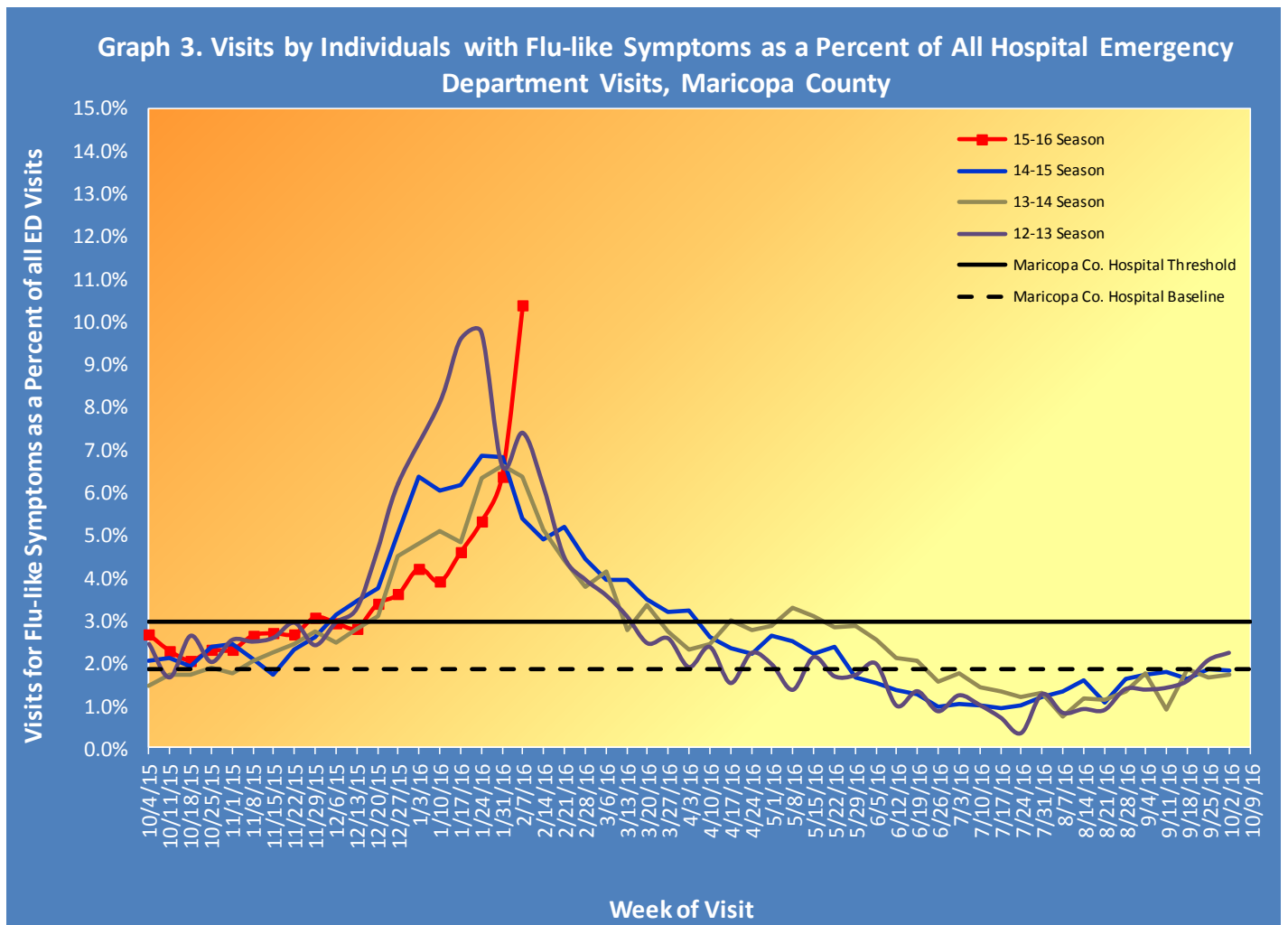
## Influenza Like Illness Activity at Hospital Emergency Departments

This influenza season there have been **6653** visits to emergency departments by individuals with flu-like symptoms. To be counted as an individual with flu-like symptoms, the patient must have both fever and cough/sore throat.

**Graph 2** shows the number of patients with flu-like symptoms seen at 12 emergency departments.

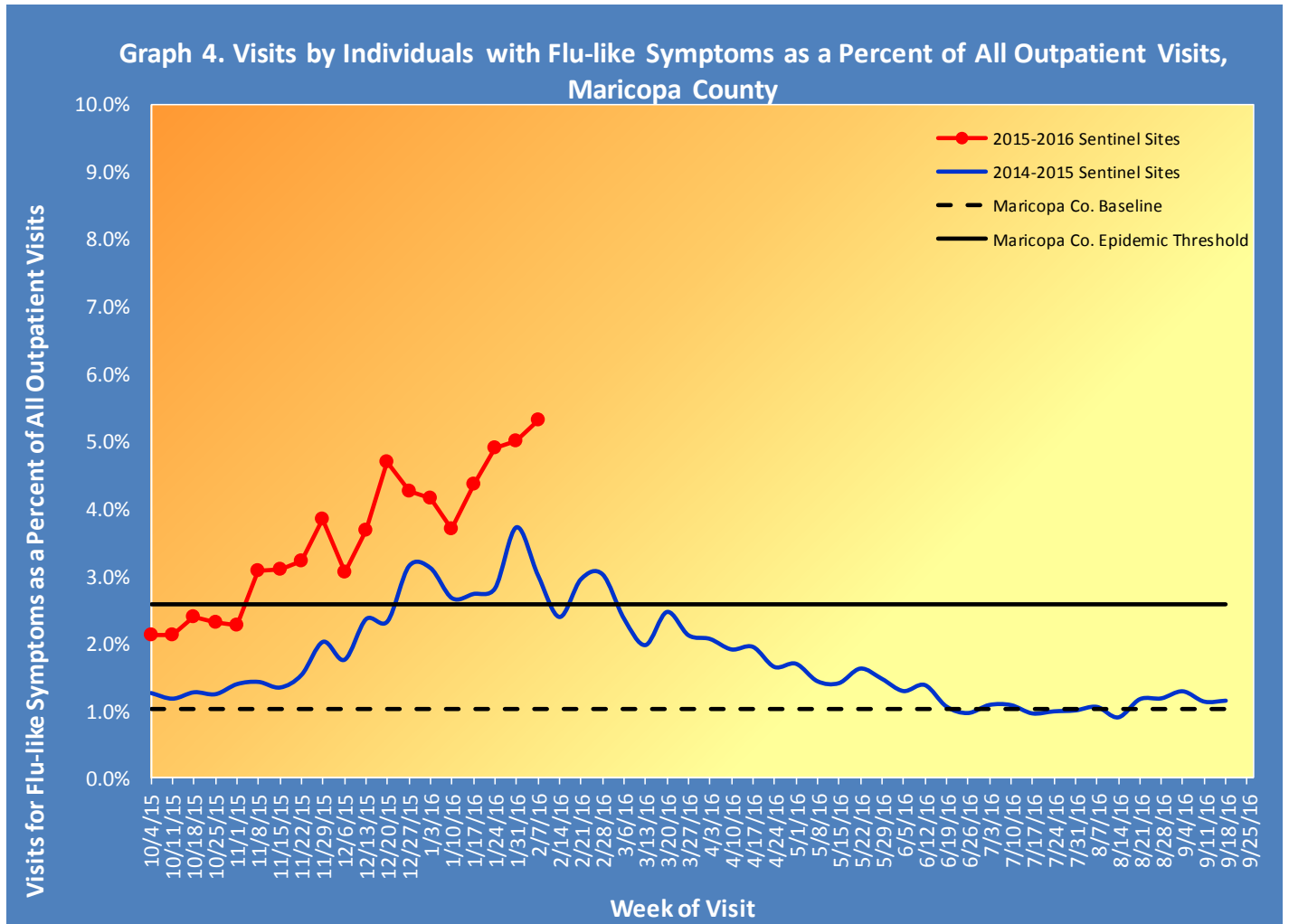


**Graph 3** shows what percent of all emergency department visits were individuals with flu-like symptoms (fever and cough/sore throat). The graph shows the trend week by week, with the current season in red.



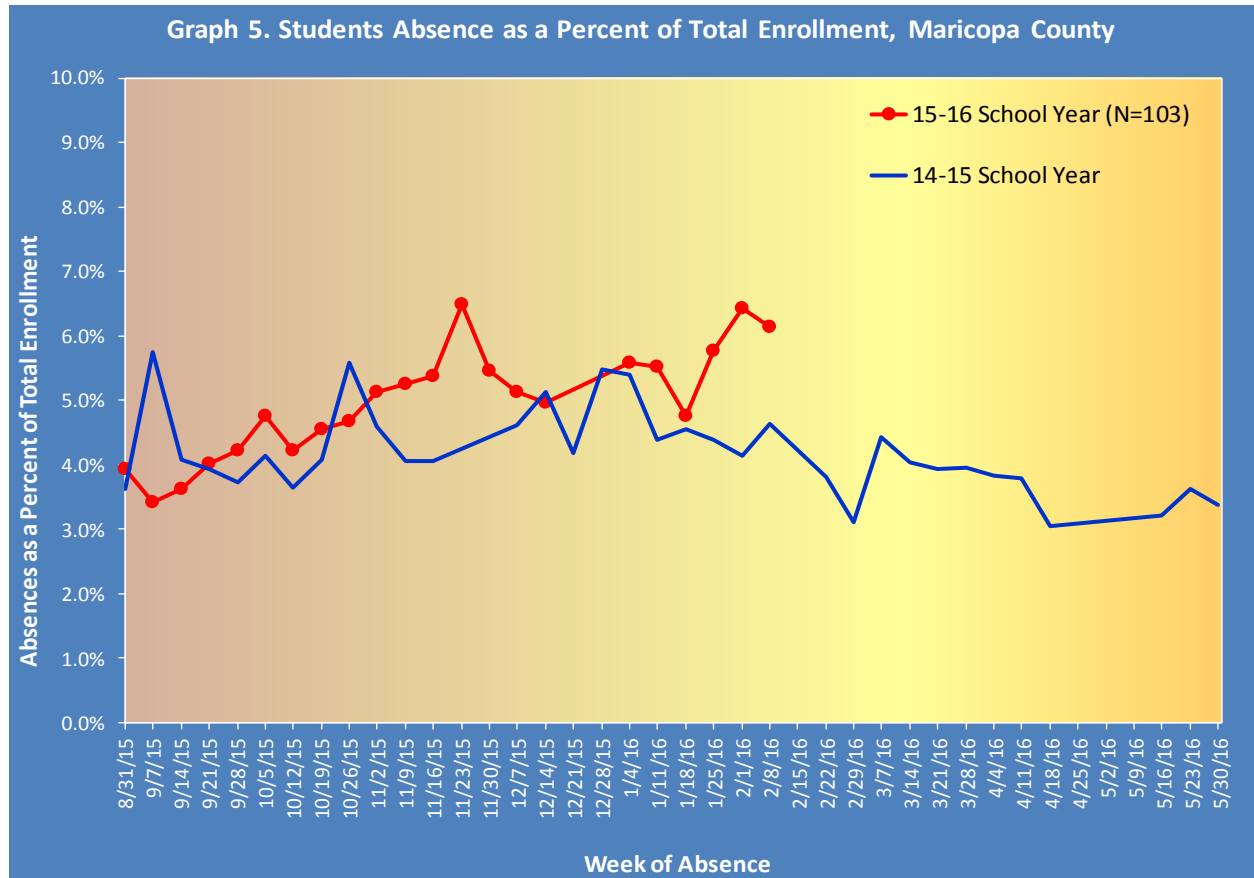
## Influenza-Like Illness Activity at Sentinel Site Outpatient Facilities Reported to the Centers for Disease Control and Prevention (CDC)

Maricopa County sentinel sites (outpatient facilities) report visits due to flu-like symptoms. This week, **5.31%** of visits at outpatient facilities were due to flu-like symptoms, last week outpatient facilities reported **5.01%**.



## Absentee Activity at Schools

**Graph 5** shows the percent of students reported absent and illustrates the week by week trend, for the current school year.



*Most schools reported being on Fall Break for Week 41 and Winter Break for weeks 51 & 52*

**The Maricopa County Department of Public Health wishes to thank all of the  
Influenza surveillance participants:**

*Arizona Department of Health Services*

*Local Hospital Emergency Departments & Infection Control Practitioners*

*Local Outpatient Facilities and Medical Directors*

*Maricopa County Public Schools*

*Maricopa County Office of Vital Statistics*

**Questions about this report may be directed to:**

**[epidemiology@mail.maricopa.gov](mailto:epidemiology@mail.maricopa.gov)**

**Information on influenza activity for the state, the U.S. and the world may be found  
at the following websites:**

**<http://www.azdhs.gov/phs/oids/epi/flu/index.htm> (ADHS)**

**<http://www.cdc.gov/flu/weekly/fluactivitysurv.htm> (CDC)**

**[http://www.who.int/influenza/gisrs\\_laboratory/updates/en/index.html](http://www.who.int/influenza/gisrs_laboratory/updates/en/index.html) (WHO)**