

# Maricopa County Department of Public Health INFLUENZA UPDATE

## September 29, 2013 through January 4, 2014

### Posted January 9, 2014

Individuals with Laboratory Confirmed Influenza

The 2013-2014 influenza season starts on 9/29/2013 (week 40) and continues through 9/27/2014 (week 39). This influenza season (2013-14), there have been 378 individuals confirmed with an influenza test, 168 cases were reported this week. On October 4th, 2013, the first locally-acquired influenza case was confirmed at the Arizona State Public Health Laboratory. The state of Arizona reported **regional** activity for week 1 (12/29/2013-1/4/2014). The chart below shows tests each week for the current season (red) and previous seasons.

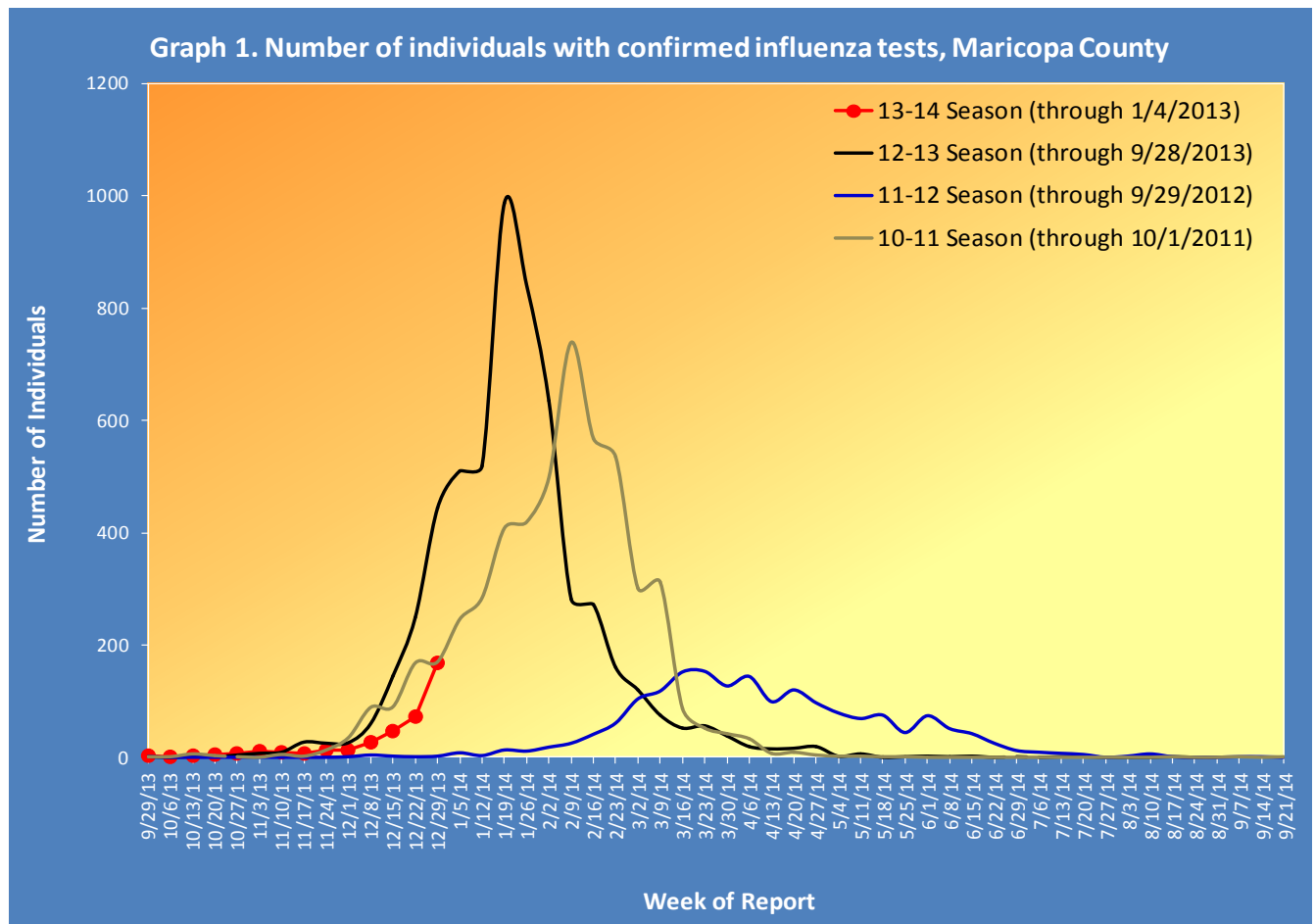


Table 1 shows the number of laboratory-confirmed cases reported this season compared to confirmed cases reported last week and last season.

| Table 1. Laboratory-Confirmed Influenza Cases Compared to Last Week and Last Season, Maricopa County |                         |                    |
|--|-------------------------|--------------------|
| Total  | Cumulative Season Total | Current Week Total |
| 2013-2014  | 378                     | 168                |
| 2012-2013  | 999                     | 444                |
| 3 season average*  | 531.3                   | 205.3              |
| <i>% increase compared to 2012-2013 season</i>   | -62%                    | -62%               |
| <i>% increase compared to 3 season average</i>   | -29%                    | -18%               |
| <i>% increase compared to last week</i>  | 80%                     | 133%               |

\*Mean of past 3 influenza seasons

### Types of Influenza

This influenza season two types of influenza have been reported. Table 2 shows the number and percentage of tests reported by influenza type and subtype.

| Table 2. Types/Subtypes of Influenza by Test, 2013-2014 Season, Maricopa County |     |        |
|---|-----|--------|
| Total   | 378 | 100.0% |
| Type A  | 344 | 91.0%  |
| <i>Subtype 2009 H1N1</i>  | 96  | 27.9%  |
| <i>Subtype H3</i>   | 4   | 1.2%   |
| <i>Subtyping not performed or unknown</i>                                       | 244 | 70.9%  |
| Type B  | 29  | 7.7%   |
| Type Unknown  | 5   | 1.3%   |

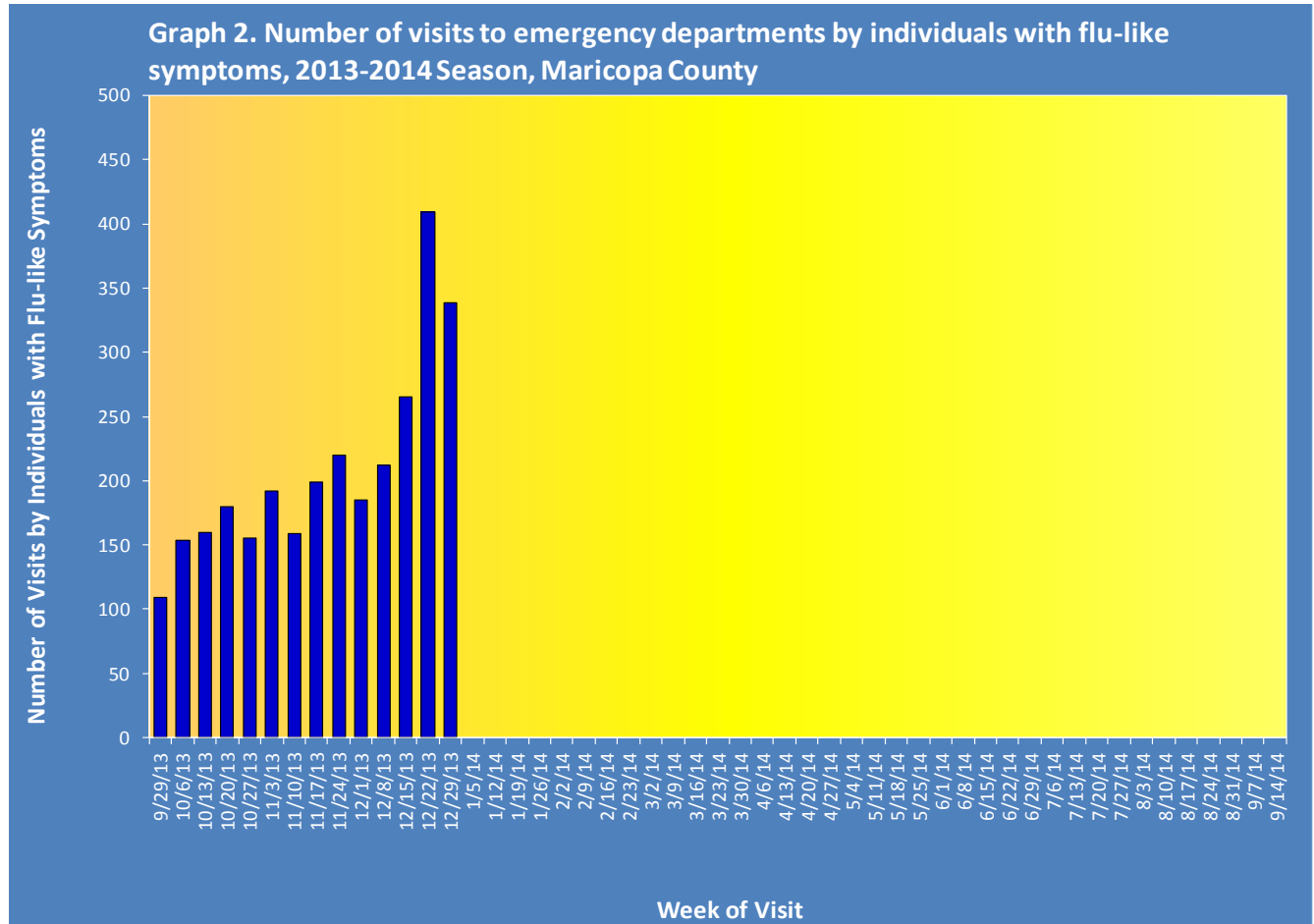
### Pneumonia and Influenza (P&I) Deaths

No new data to report. Data reported is as of 12/28/2013. No influenza-associated mortality in a child has been reported this season or last season.

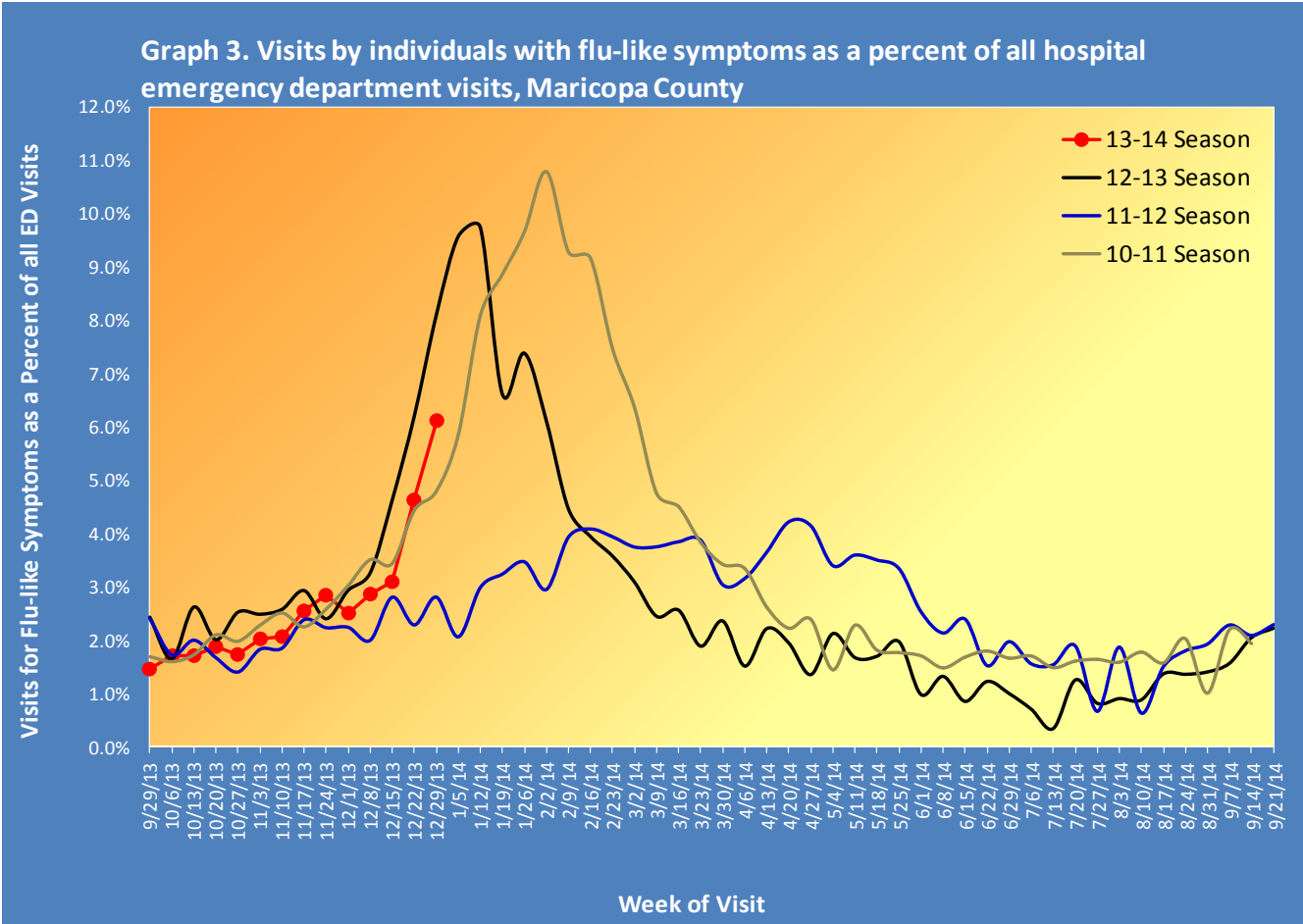
|                                 | Current Season (2013-2014) As of [12/28/2013] |           | Last Season (2012-2013) As of [12/29/2012] |           |
|---------------------------------|---|-----------|--|-----------|
|                                 | Pneumonia and Influenza                       | Influenza | Pneumonia and Influenza                    | Influenza |
| <b>Pediatric (Under Age 18)</b> | 0   | 0         | 2  | 0         |
| <b>Adult (18 and Over)</b>      | 245   | 0         | 292  | 2         |

## Respiratory Illness Activity at Hospital Emergency Departments

This influenza season there have been 2,938 visits to emergency departments by individuals with flu-like symptoms. To be counted as an individual with flu-like symptoms, the patient must have both fever and cough or sore throat. Graph 2 shows the number of patients with flu-like symptoms seen at 12 emergency departments.

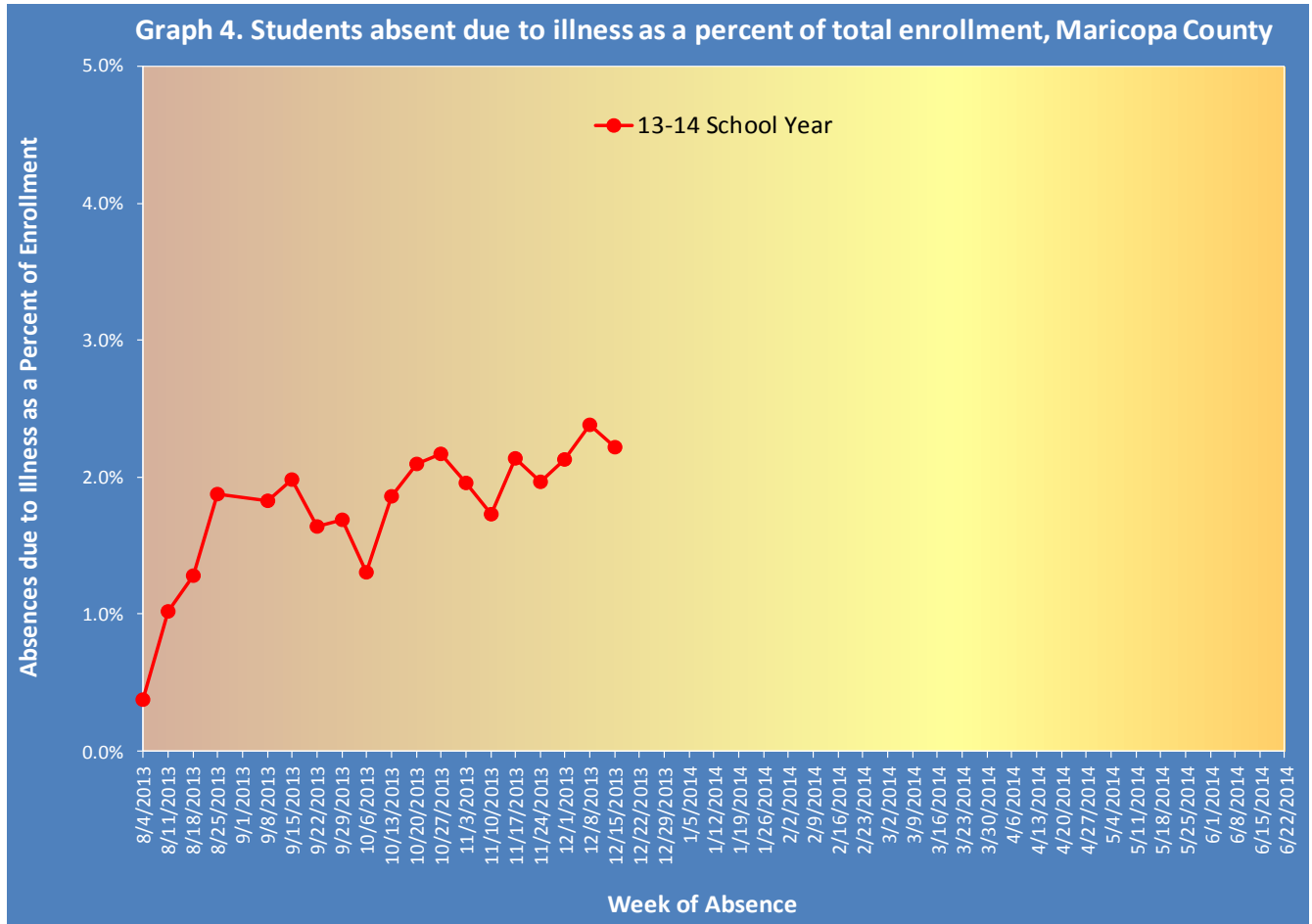


Graph 3 shows what percent of all emergency department visits were individuals with flu-like symptoms (fever and cough/sore throat). The graph shows the trend week by week, with the current season in red.



## Illness Activity at Schools

Graph 4 shows the percent of enrolled students in public schools who were absent due to illness (flu-like, gastrointestinal, other respiratory, etc.) as reported by their parents. The chart shows the trend week by week, for the current school year. This week schools are out for winter break.



*The Maricopa County Department of Public Health wishes to thank all of the  
influenza surveillance participants:*

*Arizona Department of Health Services  
Local Hospital Emergency Departments & Infection Control Practitioners  
Maricopa County Public Schools  
Maricopa County Office of Vital Statistics*

**Questions about this report may be directed to:**  
[epidemiology@mail.maricopa.gov](mailto:epidemiology@mail.maricopa.gov)

**Information on influenza activity for the state, the U.S. and the world may be found  
at the following websites:**

<http://www.azdhs.gov/phs/oids/epi/flu/index.htm> (ADHS)  
<http://www.cdc.gov/flu/weekly/fluactivitysurv.htm> (CDC)  
[http://www.who.int/influenza/gisrs\\_laboratory/updates/en/index.html](http://www.who.int/influenza/gisrs_laboratory/updates/en/index.html) (WHO)