

Maricopa County Department of Public Health

INFLUENZA UPDATE

September 29, 2013 through April 26, 2014

Posted May 1, 2014

Individuals with Laboratory Confirmed Influenza

The 2013-2014 influenza season starts on 9/29/2013 (week 40) and continues through 9/27/2014 (week 39). This influenza season (2013-14), there have been 5,671 individuals confirmed with an influenza test, 132 cases were reported this week. On October 4th, 2013, the first locally-acquired influenza case was confirmed at the Arizona State Public Health Laboratory. The state of Arizona reported **local** activity for week 17 (4/20/2014-4/26/2014). The chart below shows tests each week for the current season (red) and previous seasons.

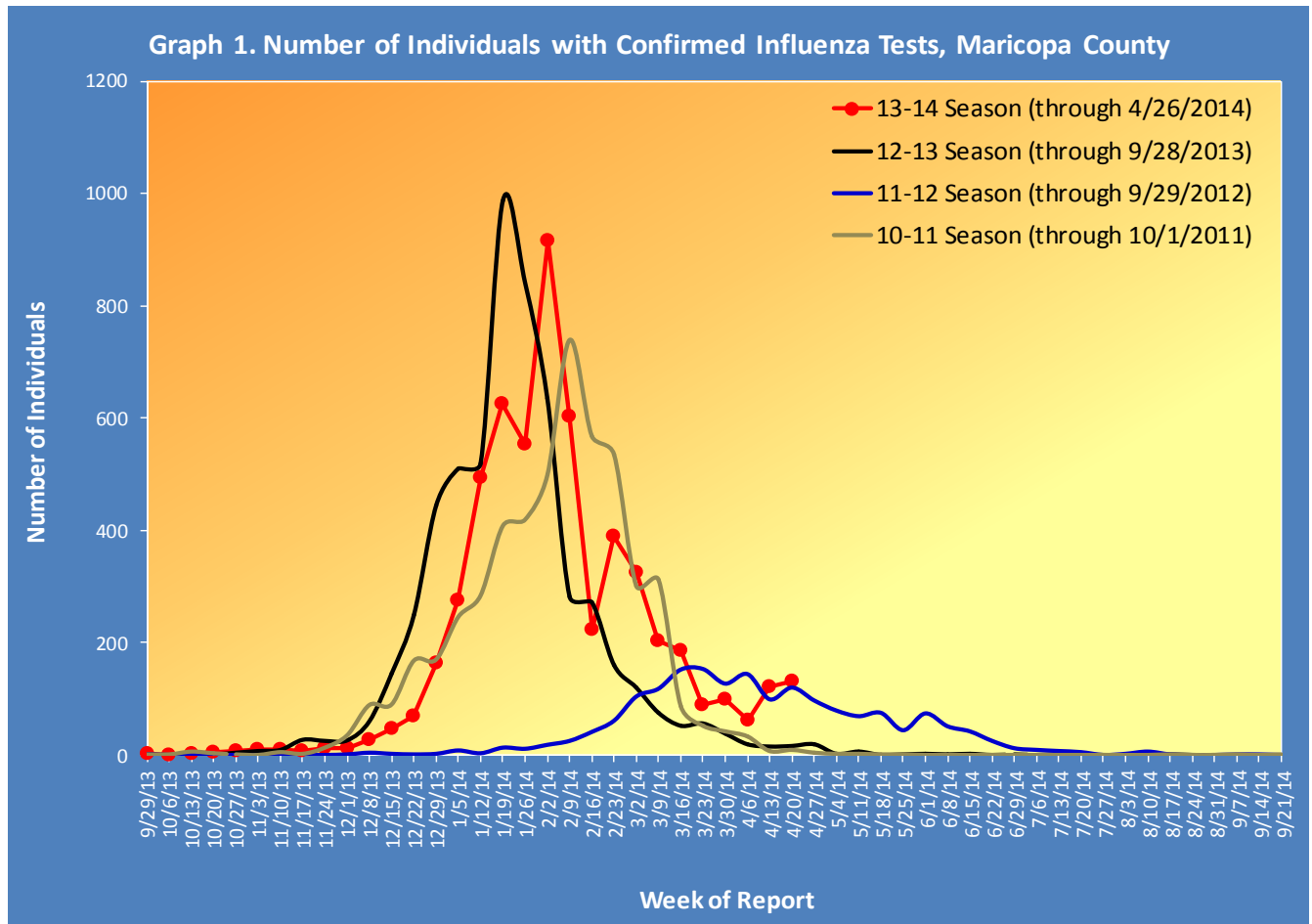


Table 1 shows the number of laboratory-confirmed cases reported this season compared to confirmed cases reported last week and last season.

Table 1. Laboratory-Confirmed Influenza Cases Compared to Last Week and Last Season, Maricopa County		
Total	Cumulative Season Total	Current Week Total
2013-2014	5671	132
2012-2013	5596	16
3 season average*	3976.0	48.3
% increase compared to 2012-2013 season	1%	725%
% increase compared to 3 season average	43%	173%
% increase compared to last week	2%	9%

*Mean of past 3 influenza seasons

Types of Influenza

This influenza season two types of influenza have been reported. Table 2 shows the number and percentage of tests reported by influenza type and subtype.

Table 2. Types/Subtypes of Influenza by Test, 2013-2014 Season, Maricopa County		
Total	5671	100.0%
Type A	4806	84.7%
<i>Subtype 2009 H1N1</i>	691	14.4%
<i>Subtype H3</i>	30	0.6%
<i>Subtyping not performed or unknown</i>	4085	85.0%
Type B	800	14.1%
Type Unknown	65	1.1%

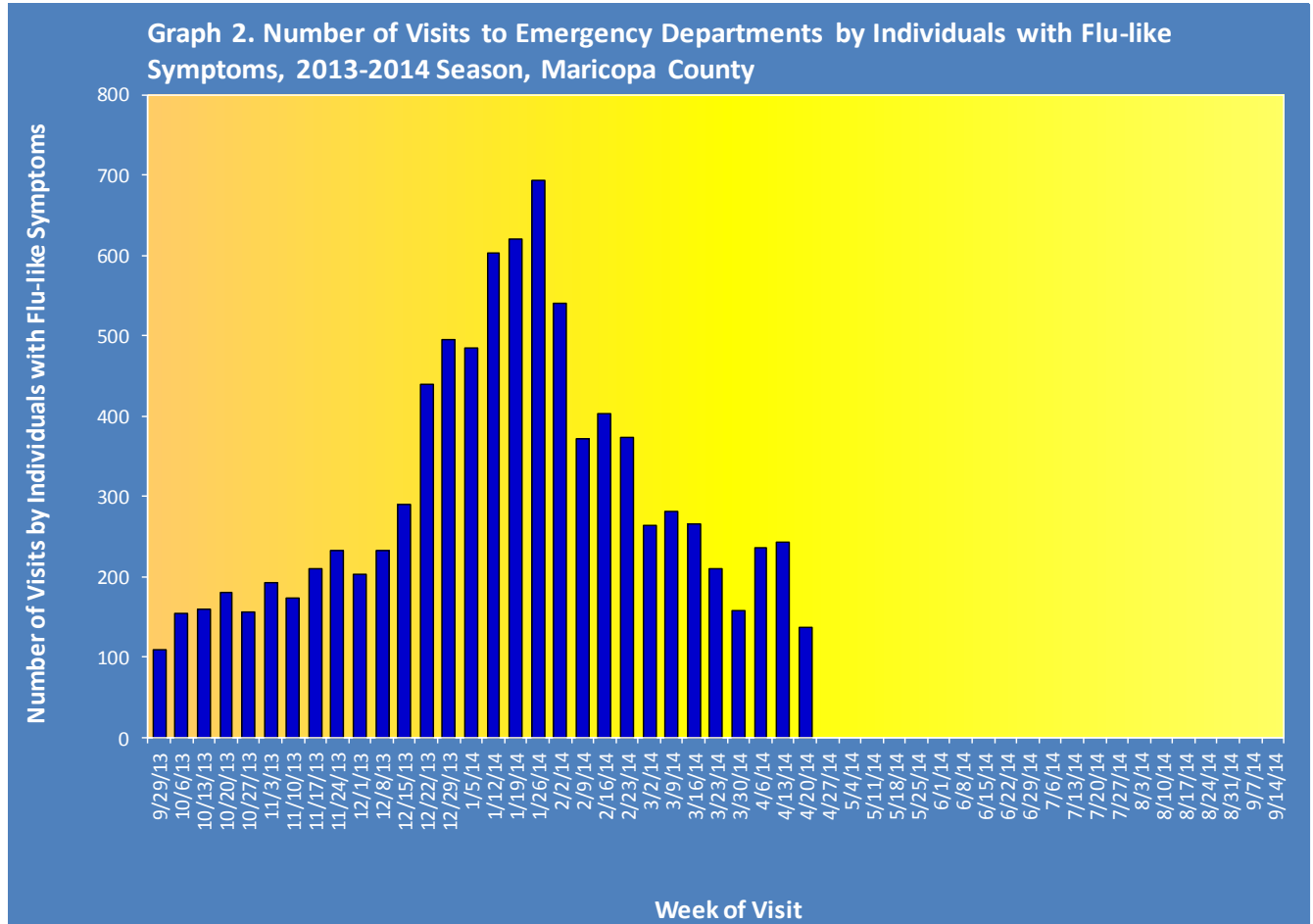
Pneumonia and Influenza (P&I) Deaths

This influenza season there have been 842 pneumonia and influenza (P&I) deaths (including 37 influenza-associated deaths in adults). Although the number of P&I deaths has decreased compared to last season's total of 928 P&I deaths, the number of deaths due to influenza has increased. No influenza-associated mortality in a child has been reported this season or last season. Table 3 shows the number of P&I deaths and the number of influenza deaths that occurred this season and last season.

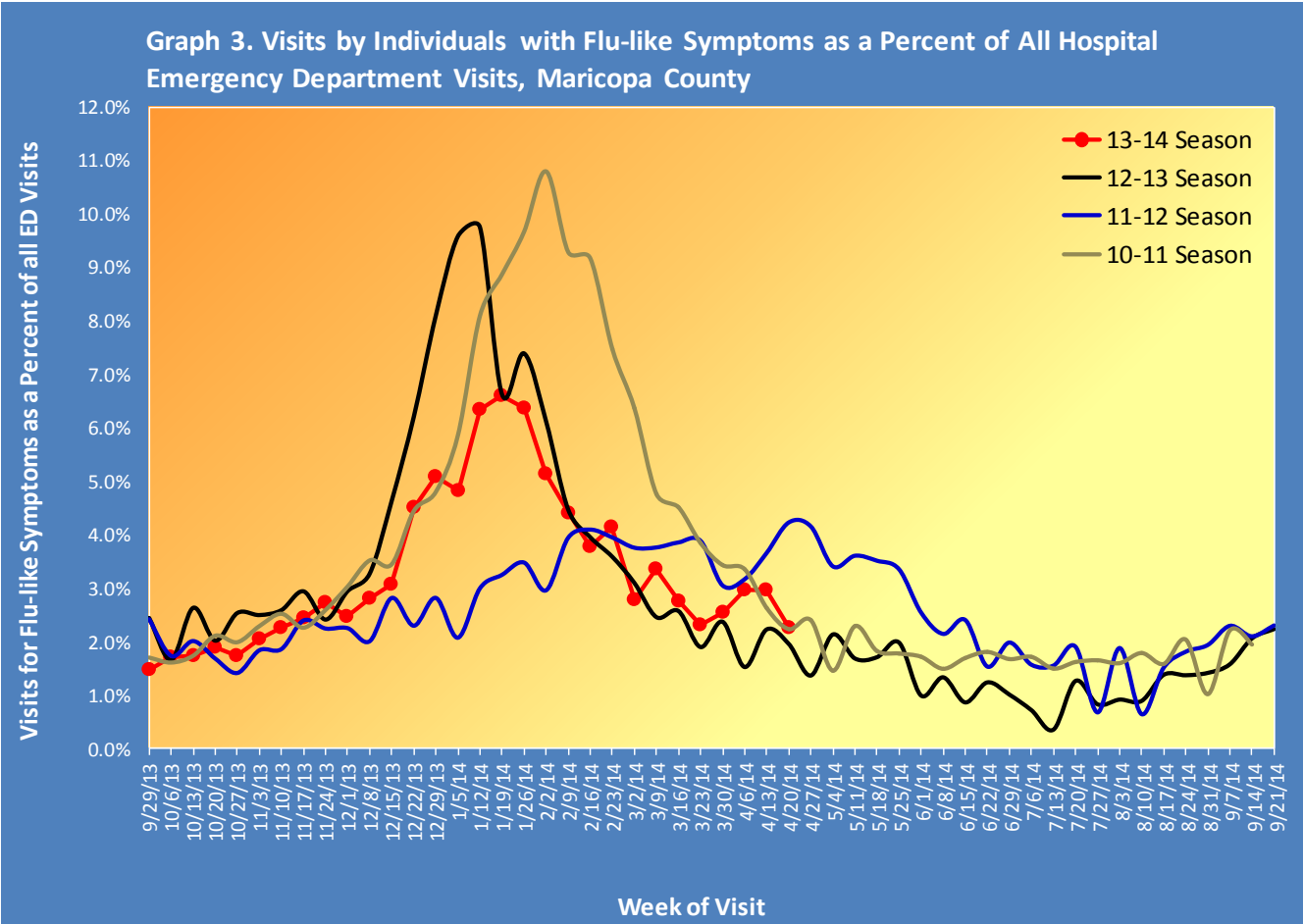
Table 3. Pneumonia and Influenza (P&I) Deaths, 2013-14 & 2012-13 Seasons, Maricopa County				
	Current Season (2013-2014) As of [4/26/2014]		Last Season (2012-2013) As of [4/27/2013]	
	Pneumonia and Influenza	Influenza	Pneumonia and Influenza	Influenza
Pediatric (Under Age 18)	3	0	9	0
Adult (18 and Over)	839	37	919	26

Respiratory Illness Activity at Hospital Emergency Departments

This influenza season there have been 6,021 visits to emergency departments by individuals with flu-like symptoms. To be counted as an individual with flu-like symptoms, the patient must have both fever and cough or sore throat. Graph 2 shows the number of patients with flu-like symptoms seen at 14 emergency departments.

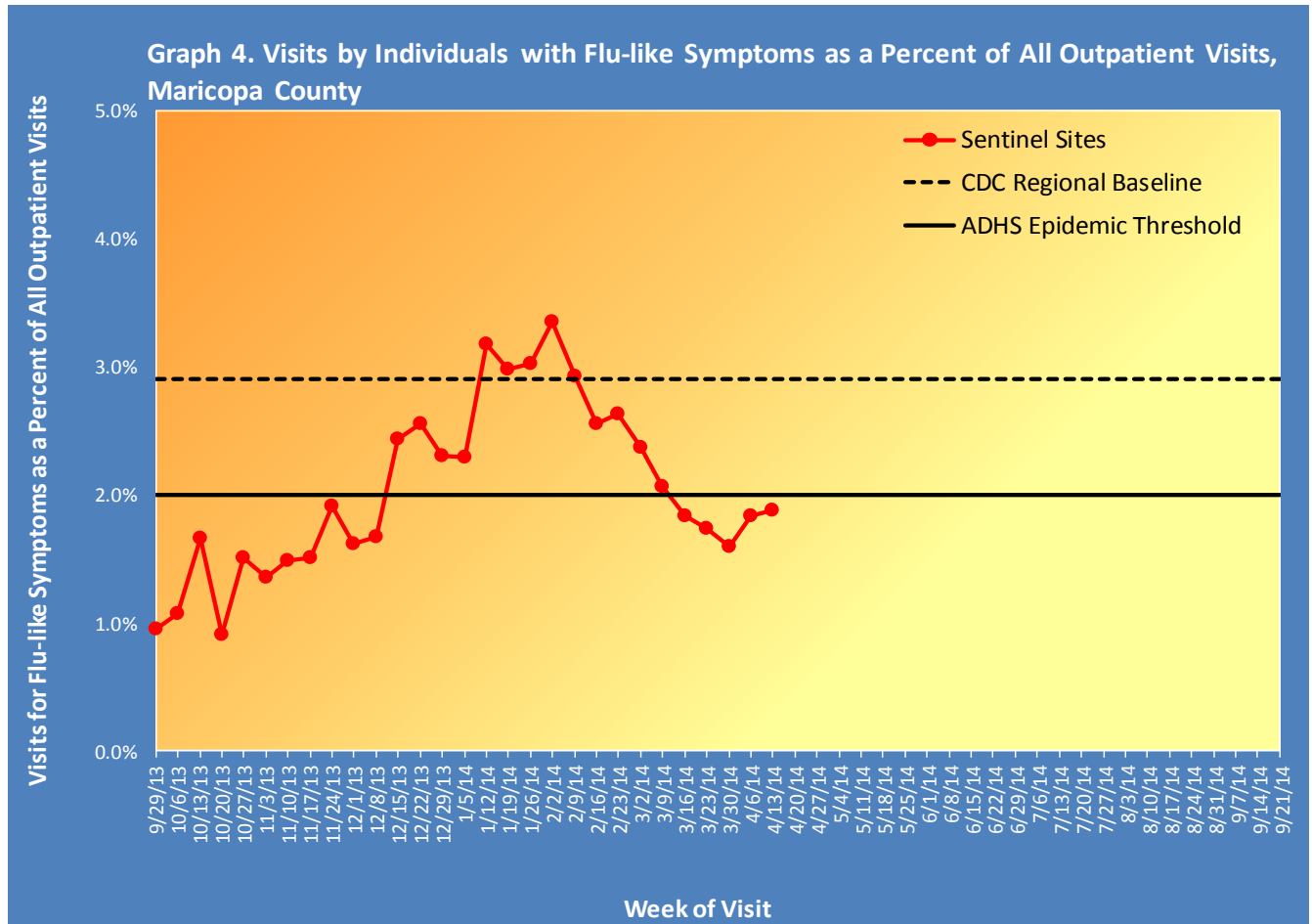


Graph 3 shows what percent of all emergency department visits were individuals with flu-like symptoms (fever and cough/sore throat). The graph shows the trend week by week, with the current season in red.



Respiratory Illness Activity at Sentinel Site Outpatient Facilities Reported to the Centers for Disease Control and Prevention (CDC)

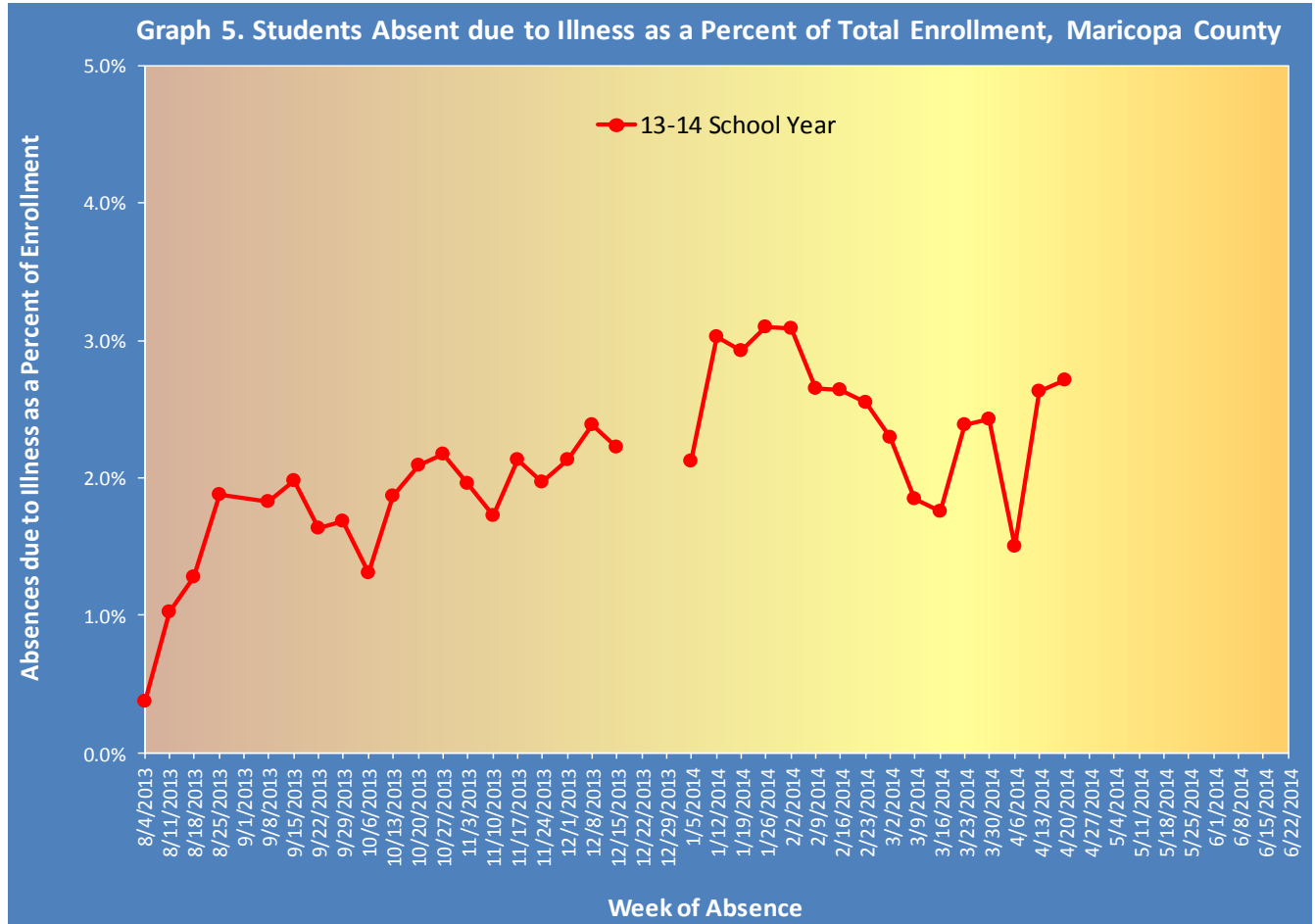
Maricopa County sentinel sites (outpatient facilities) report visits due to flu-like symptoms and the total number of visits seen each week to the Centers for Disease Control and Prevention (CDC). This percentage is then compared to the CDC baseline and Arizona Department of Health Services (ADHS) epidemic threshold each week to determine the level of influenza activity. This week, 2.09% of visits at outpatient facilities were due to flu-like symptoms.



Sources: Adelante Healthcare, Arizona State University Health Services, Cigna Medical Group, Wesley Health Center

Illness Activity at Schools

Graph 5 shows the percent of enrolled students in public schools who were absent due to illness (flu-like, gastrointestinal, other respiratory, etc.) as reported by their parents. The chart shows the trend week by week, for the current school year. This week, 19 out of 21 participating schools met the reporting criteria (≥ 3 days of reporting).



***The Maricopa County Department of Public Health wishes to thank all of the
influenza surveillance participants:***

*Arizona Department of Health Services
Local Hospital Emergency Departments & Infection Control Practitioners
Local Outpatient Facilities and Medical Directors
Maricopa County Public Schools
Maricopa County Office of Vital Statistics*

***Questions about this report may be directed to:
epidemiology@mail.maricopa.gov***

***Information on influenza activity for the state, the U.S. and the world may be found
at the following websites:***

<http://www.azdhs.gov/phs/oids/epi/flu/index.htm> (ADHS)
<http://www.cdc.gov/flu/weekly/fluactivitysurv.htm> (CDC)
http://www.who.int/influenza/gisrs_laboratory/updates/en/index.html (WHO)