

Maricopa County Department of Public Health INFLUENZA UPDATE

September 29, 2013 through November 30, 2013 Posted December 5, 2013

Individuals with Laboratory Confirmed Influenza

The 2013-2014 influenza season starts on 9/29/2013 (week 40) and continues through 9/27/2014 (week 39). This influenza season (2013-14), there have been 56 individuals confirmed with an influenza test, 12 cases were reported this week. On October 4th, 2013, the first locally-acquired influenza case was confirmed at the Arizona State Public Health Laboratory. The state of Arizona reported **sporadic** activity for week 48 (11/24/2013-11/30/2013). The chart below shows tests each week for the current season (red) and previous seasons.

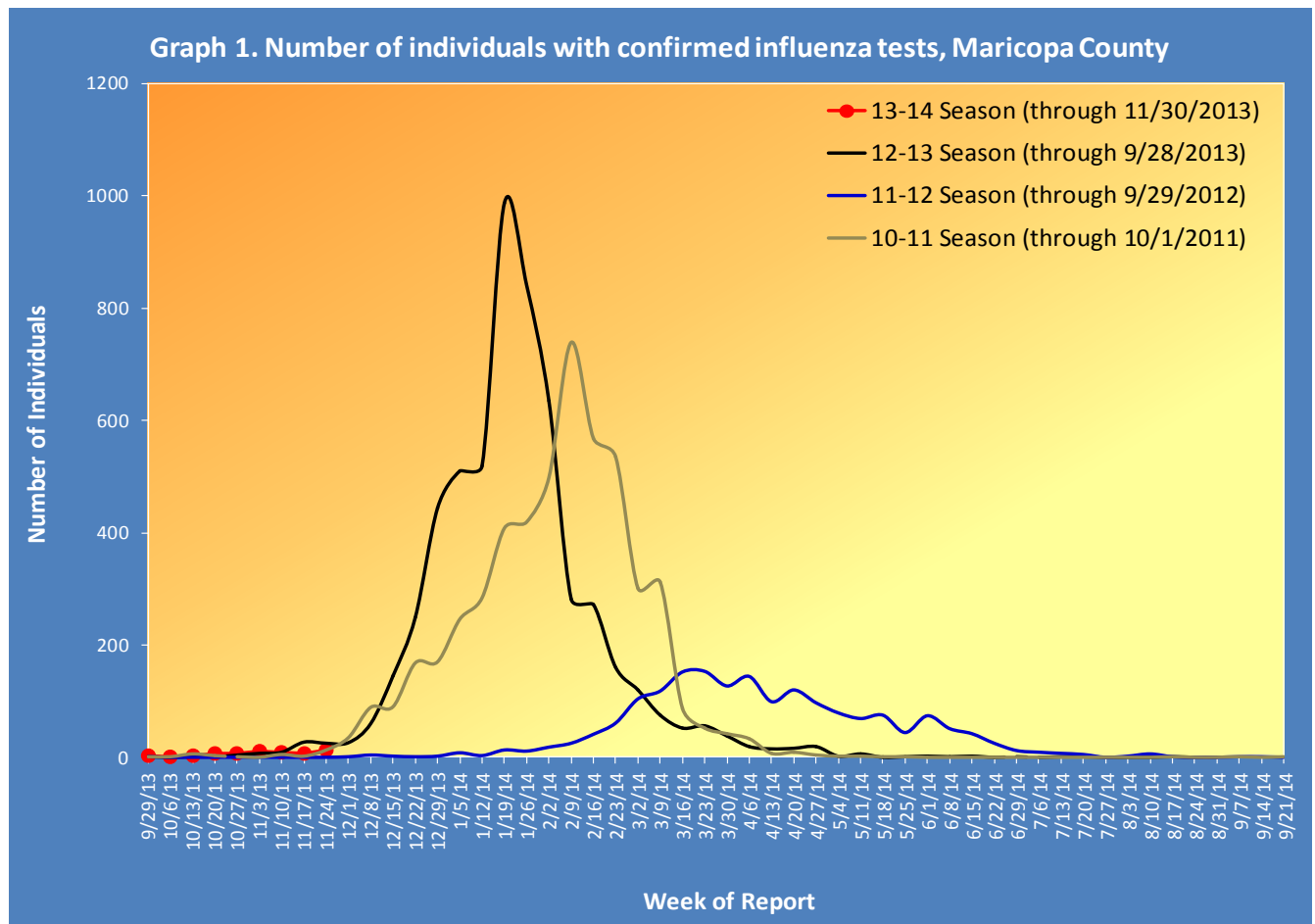


Table 1 shows the number of laboratory-confirmed cases reported this season compared to confirmed cases reported last week and last season.

Table 1. Laboratory-Confirmed Influenza Cases Compared to Last Week and Last Season, Maricopa County		
Total	Cumulative Season Total	Current Week Total
2013-2014	56	12
2012-2013	75	25
3 season average*	36.0	12.7
% increase compared to 2012-2013 season	-25%	-52%
% increase compared to 3 season average	56%	-6%
% increase compared to last week	27%	71%

*Mean of past 3 influenza seasons

Types of Influenza

This influenza season two types of influenza have been reported. Table 2 shows the number and percentage of tests reported by influenza type and subtype.

Table 2. Types/Subtypes of Influenza by Test, 2013-2014 Season, Maricopa County		
Total	56	100.0%
Type A	38	67.9%
Subtype 2009 H1N1	8	21.1%
Subtype H3	3	7.9%
Subtyping not performed or unknown	27	71.1%
Type B	15	26.8%
Type Unknown	3	5.4%

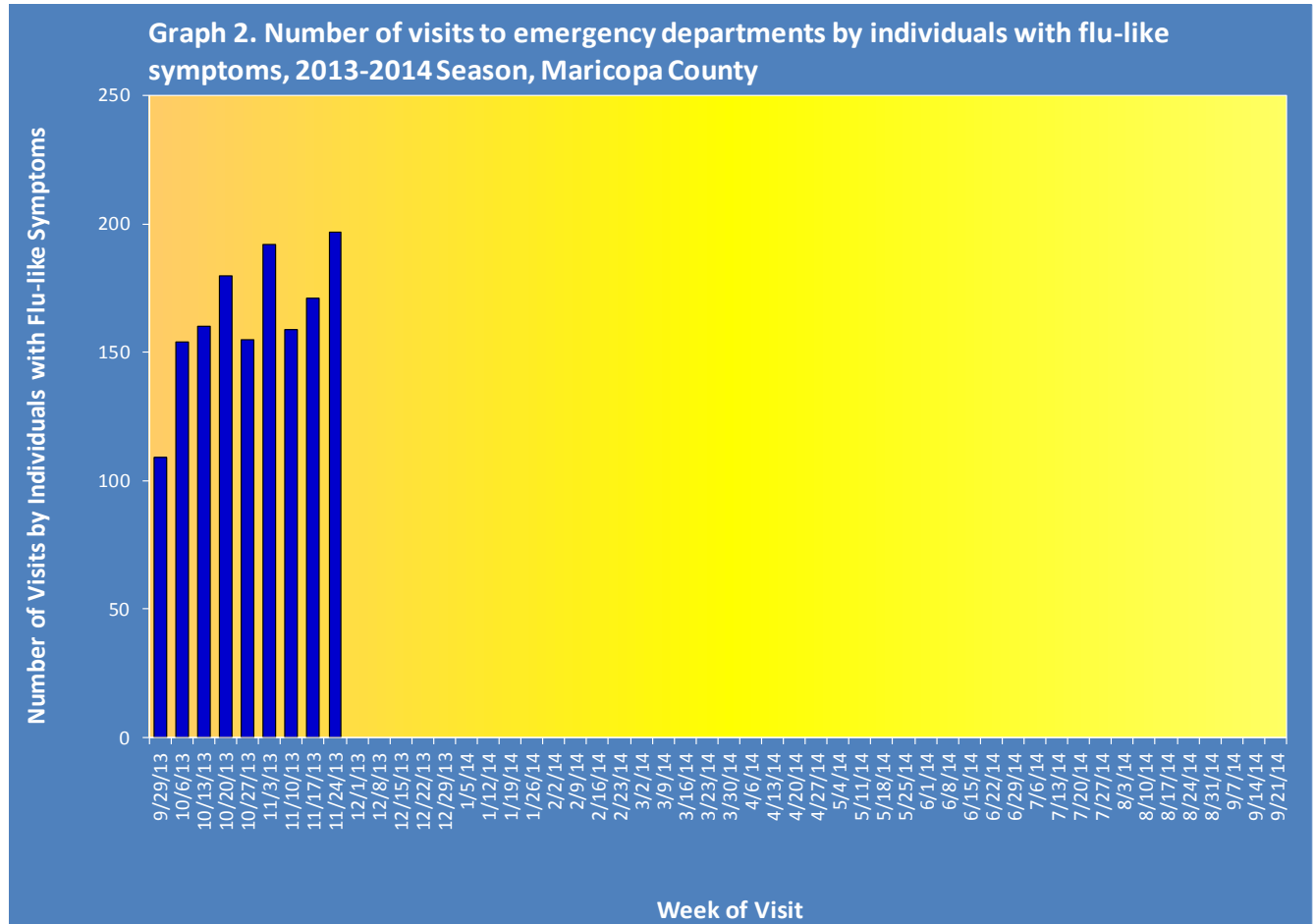
Pneumonia and Influenza (P&I) Deaths

This influenza season there have been 153 pneumonia and influenza (P&I) deaths. This has decreased from last season's total of 196 P&I deaths. No influenza-associated mortality in a child has been reported this season or last season. Table 3 shows the number of P&I deaths and the number of influenza deaths that occurred this season and last season.

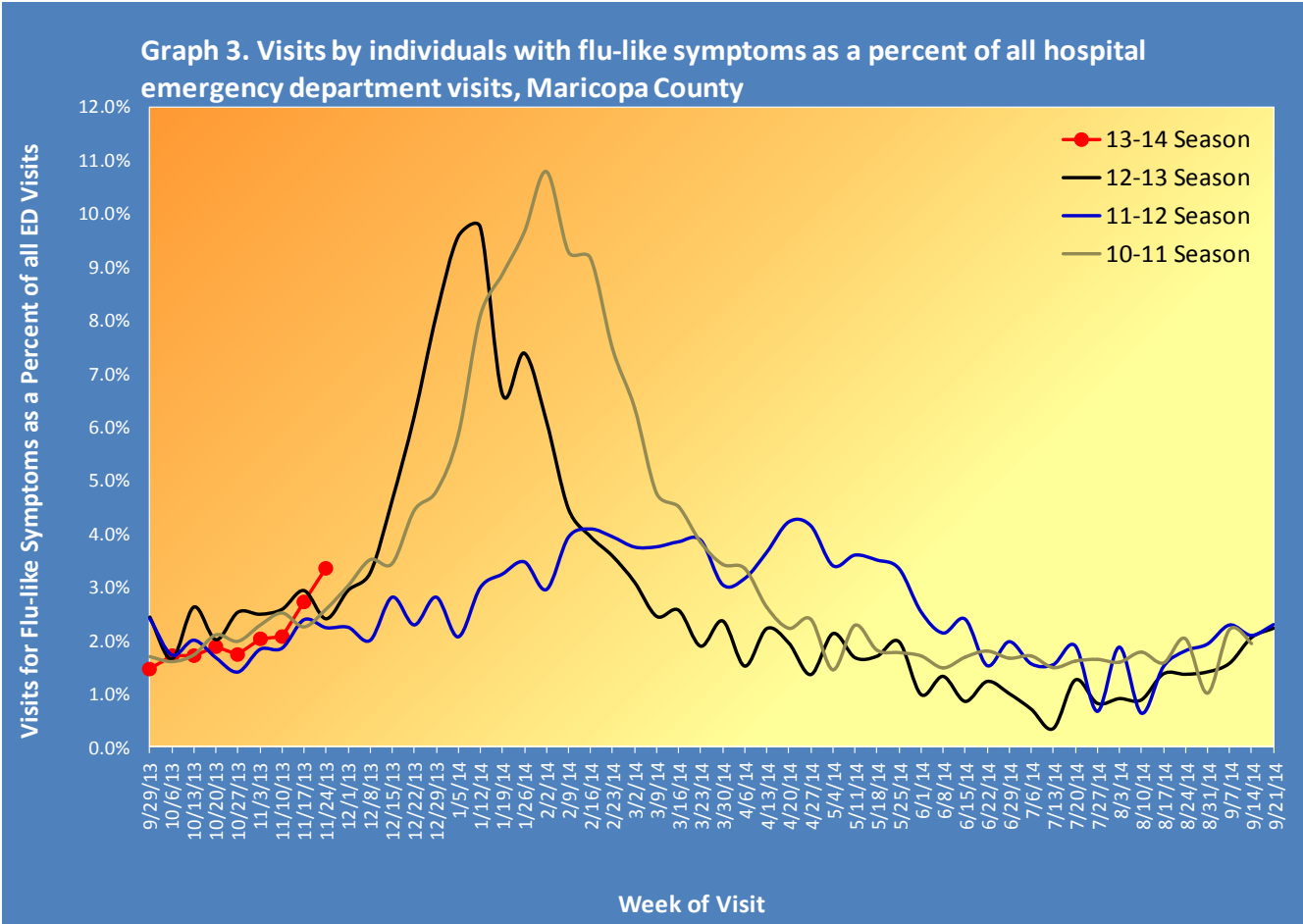
Table 3. Pneumonia and Influenza (P&I) Deaths, 2013-14 & 2012-13 Seasons, Maricopa County				
	Current Season (2013-2014) As of [11/30/2013]		Last Season (2012-2013) As of [12/1/2012]	
	Pneumonia and Influenza	Influenza	Pneumonia and Influenza	Influenza
Pediatric (Under Age 18)	0	0	1	0
Adult (18 and Over)	153	0	195	0

Respiratory Illness Activity at Hospital Emergency Departments

This influenza season there have been 1,477 visits to emergency departments by individuals with flu-like symptoms. To be counted as an individual with flu-like symptoms, the patient must have both fever and cough or sore throat. Graph 2 shows the number of patients with flu-like symptoms seen at 12 emergency departments.

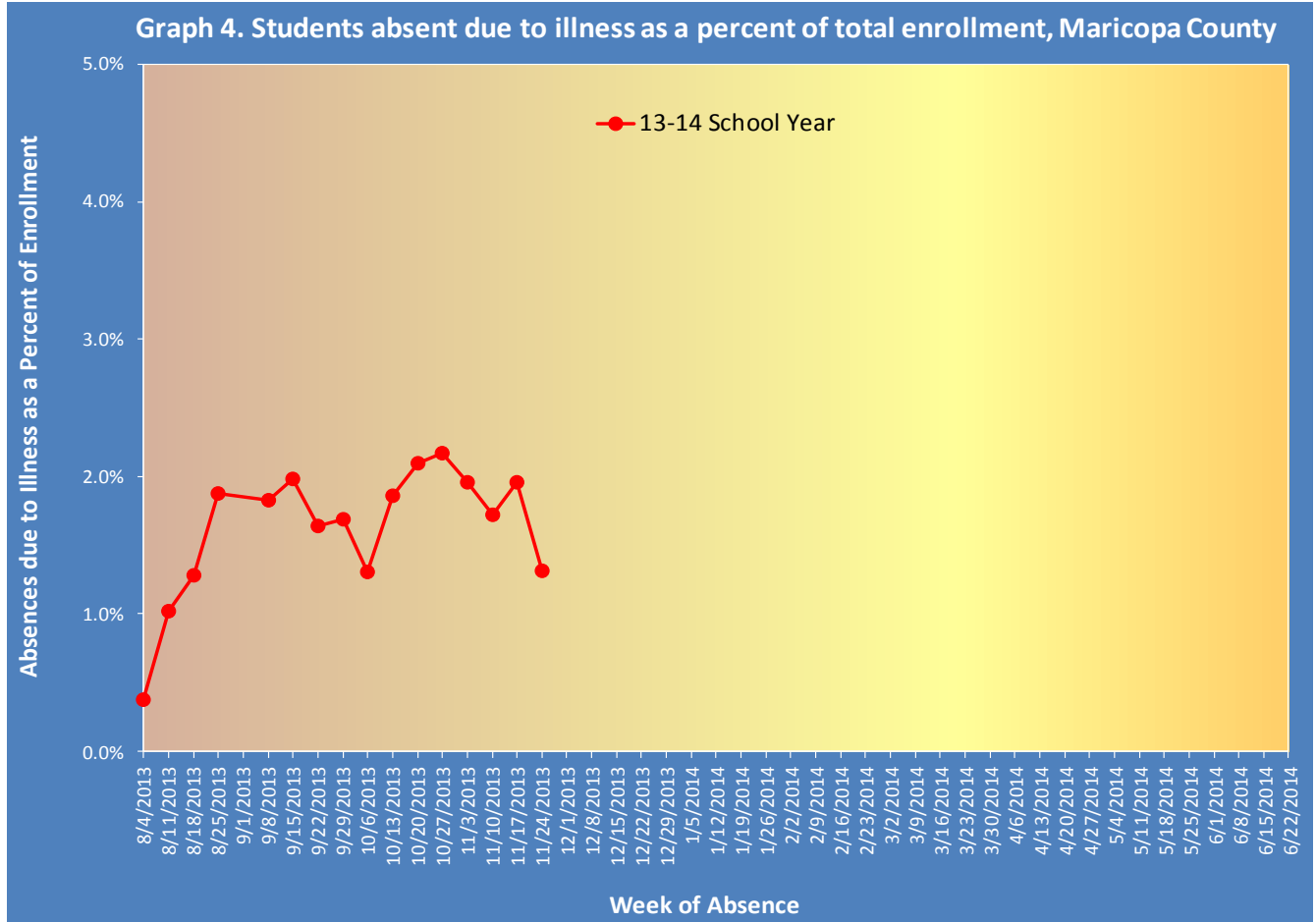


Graph 3 shows what percent of all emergency department visits were individuals with flu-like symptoms (fever and cough/sore throat). The graph shows the trend week by week, with the current season in red.



Illness Activity at Schools

Graph 4 shows the percent of enrolled students in public schools who were absent due to illness (flu-like, gastrointestinal, other respiratory, etc.) as reported by their parents. The chart shows the trend week by week, for the current school year. This week, 11 out of 16 participating schools met the reporting criteria (≥ 3 days of reporting).



*The Maricopa County Department of Public Health wishes to thank all of the
influenza surveillance participants:*

*Arizona Department of Health Services
Local Hospital Emergency Departments & Infection Control Practitioners
Maricopa County Public Schools
Maricopa County Office of Vital Statistics*

Questions about this report may be directed to:
epidemiology@mail.maricopa.gov

**Information on influenza activity for the state, the U.S. and the world may be found
at the following websites:**

<http://www.azdhs.gov/phs/oids/epi/flu/index.htm> (ADHS)
<http://www.cdc.gov/flu/weekly/fluactivitysurv.htm> (CDC)
http://www.who.int/influenza/gisrs_laboratory/updates/en/index.html (WHO)