

Maricopa County Department of Public Health

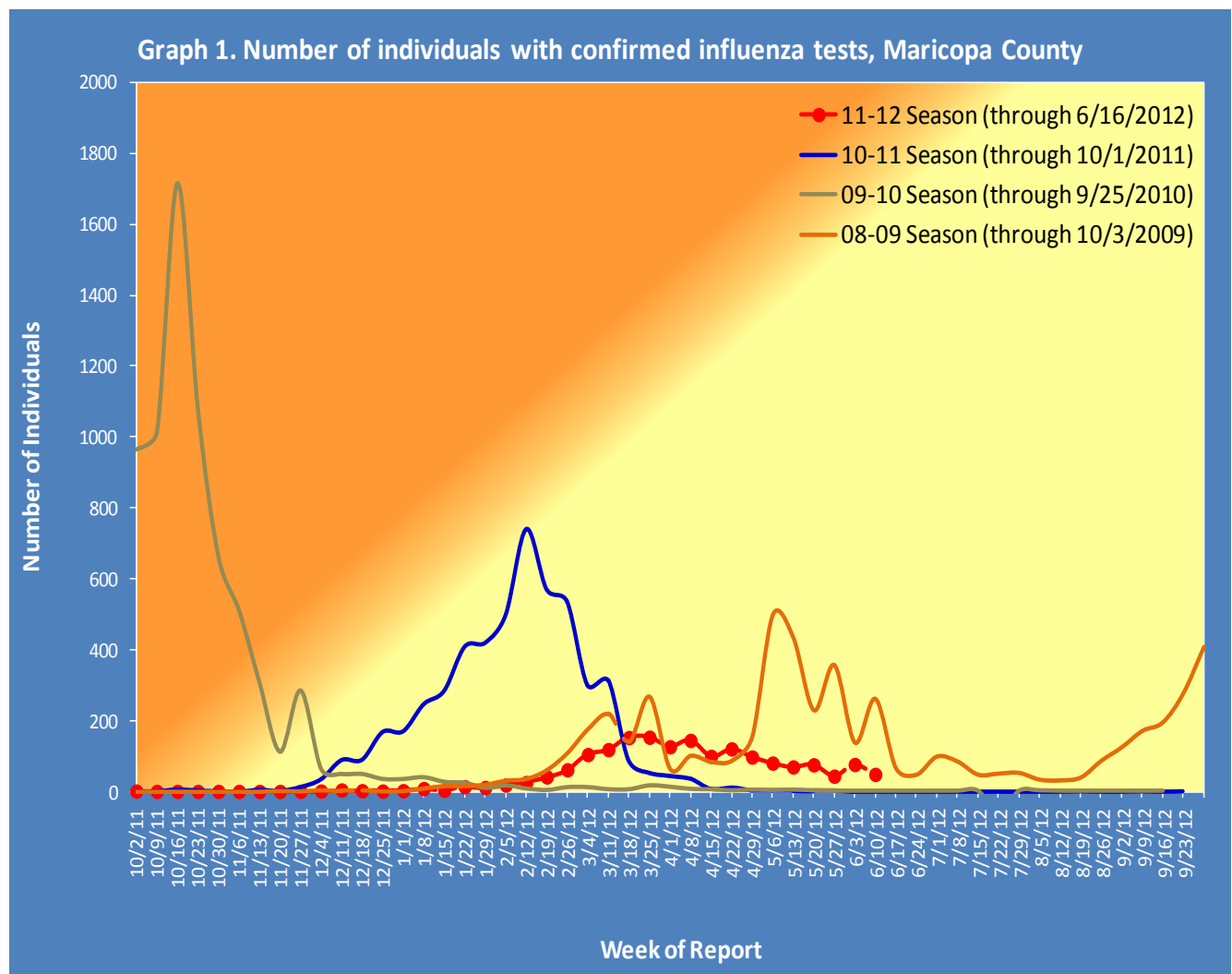
INFLUENZA UPDATE

October 2, 2011 through June 16, 2012

Posted June 20, 2012

Individuals with Laboratory Confirmed Influenza

This influenza season (2011-12), there have been 1,695 individuals confirmed with an influenza test. The chart below shows tests each week for the current season (red) and previous seasons. The broken line represents weeks for which all test results have not yet been collected.



Types of Influenza

This influenza season, three types of influenza have been reported. Table 1 shows the number and percentage of tests reported by influenza type.

Influenza Type	Number of Tests	Percentage
Swine flu (Influenza A, type H1N1)	332	52.3%
Seasonal influenza (Influenza A, type H3)	162	25.5%
Influenza B, all types	141	22.2%
		100%
No type determined	1060	--
Total	1695	--

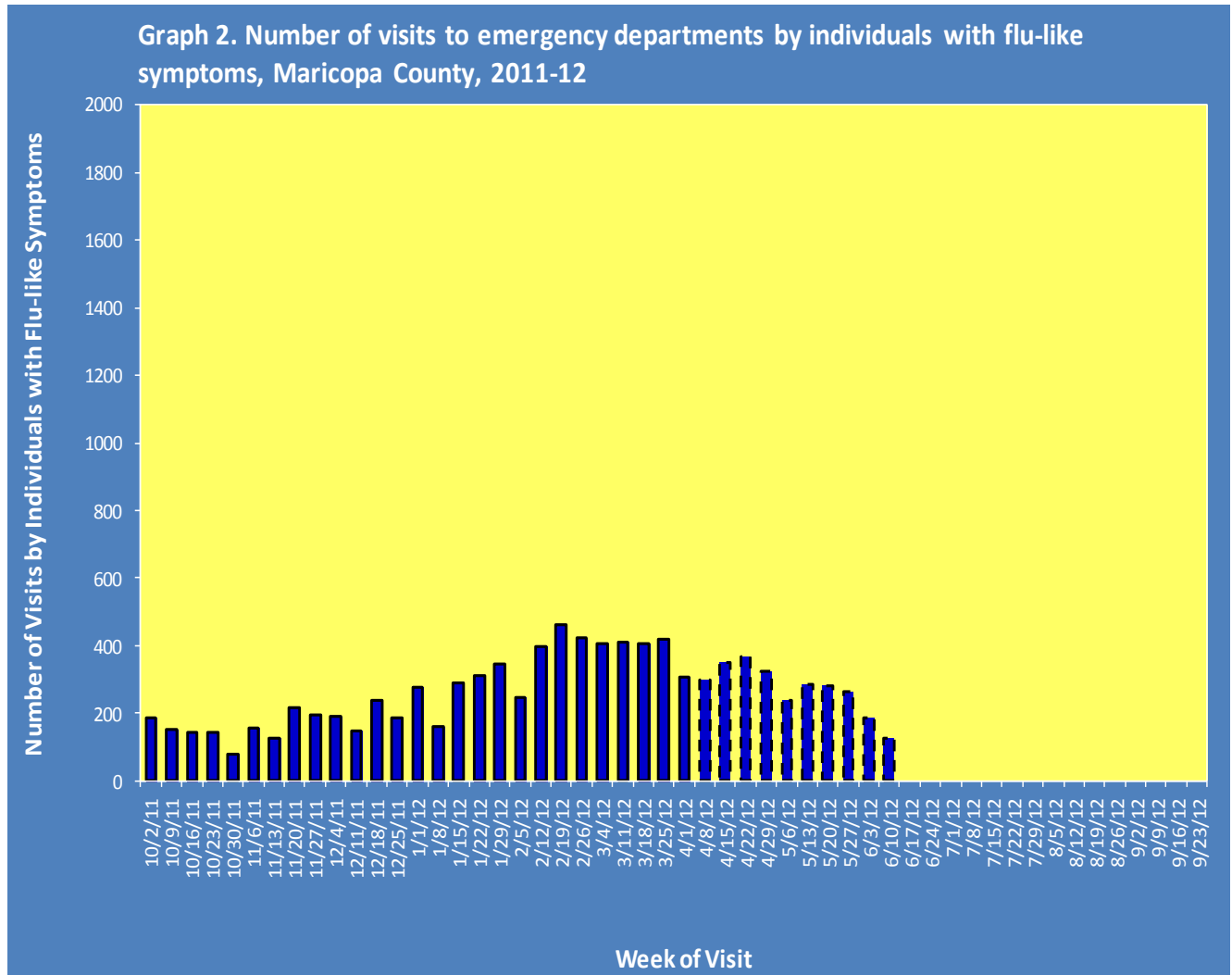
Pneumonia and Influenza (P&I) Deaths

This influenza season, there have been 971 pneumonia and influenza (P&I) deaths (including 8 pediatric deaths (none attributed to influenza)). This is down from last season's total of 1,105 P&I deaths (including 18 pediatric deaths (3 attributed to influenza)). Table 2 shows the number of P&I deaths and the number of influenza deaths that occurred this season and last season.

	Current Season (2011-2012) As of [6/16/2012]		Last Season (2010-2011) As of [6/18/2011]	
	Pneumonia and Influenza	Influenza	Pneumonia and Influenza	Influenza
Pediatric (Under age 18)	8	0	18	3
Adult (18 and Over)	963	5	1087	16

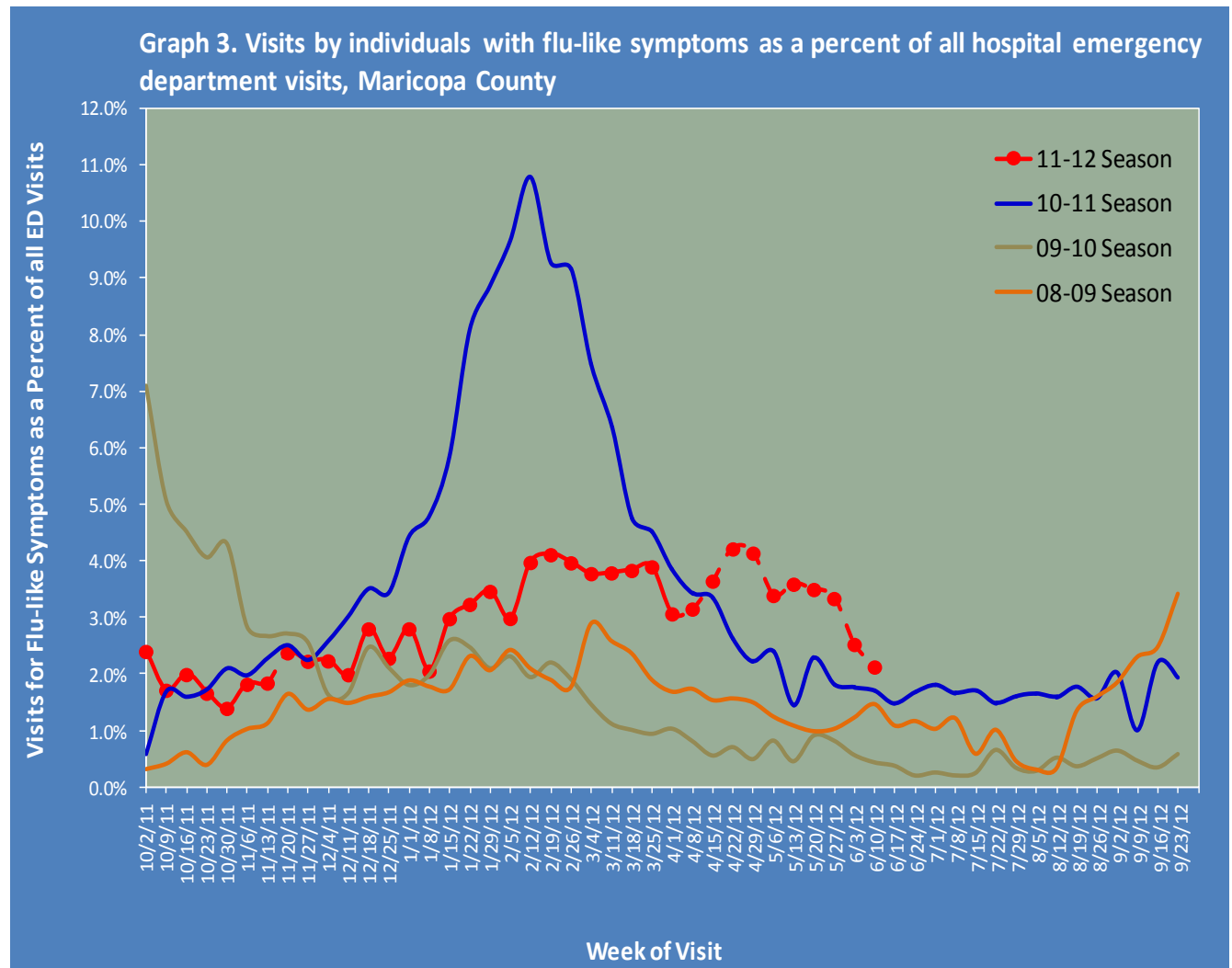
Respiratory Illness Activity at Hospital Emergency Departments

This influenza season, there have been 9,762 visits to emergency departments by individuals with flu-like symptoms. To be counted as an individual with flu-like symptoms, the patient must have both fever and cough or sore throat. Graph 2 shows the number of patients with flu-like symptoms seen at 12 emergency departments. The broken bars represent weeks for which all visits have not yet been collected.



**Beginning week 13, all Biosense facilities have been removed from seasonal analysis*

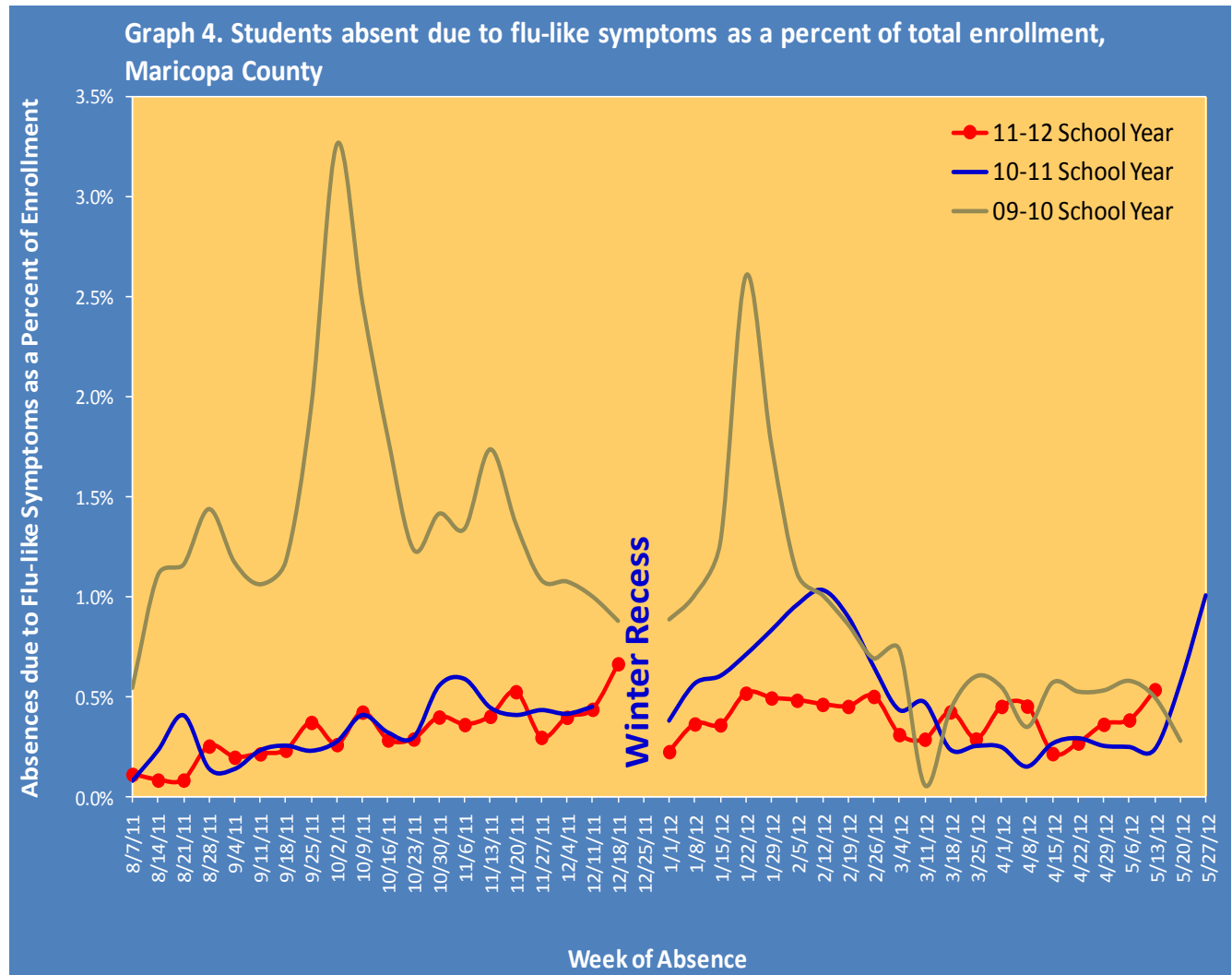
Graph 3 shows what percent of all emergency department visits were individuals with flu-like symptoms (fever and cough/sore throat). The graph shows the trend week by week, with the current season in red. The broken line represents weeks for which all visits have not been collected.



*Beginning week 13, all Biosense facilities have been removed from seasonal analysis for this season and previous seasons

Respiratory Illness Activity at Schools

Graph 4 shows the percent of enrolled students in selected public schools who were absent due to flu-like symptoms. To be counted as a student absent with flu-like symptoms, the student must be kept home from school and reported (usually by a parent) to have both a fever and cough or sore throat. The chart shows the trend week by week, for the current school year (red) and previous school years.



***The Maricopa County Department of Public Health wishes to thank all of the
influenza surveillance participants:***

*Arizona Department of Health Services
Local Hospital Emergency Departments & Infection Control Practitioners
Maricopa County Public Schools
Maricopa County Office of Vital Statistics*

***Questions about this report may be directed to:
epidemiology@mail.maricopa.gov***

***Information on influenza activity for the state, the U.S. and the world may be found
at the following websites:***

<http://www.azdhs.gov/phs/oids/epi/flu/index.htm> (ADHS)
<http://www.cdc.gov/flu/weekly/fluactivitysurv.htm> (CDC)
http://www.who.int/influenza/gisrs_laboratory/updates/en/index.html (WHO)