

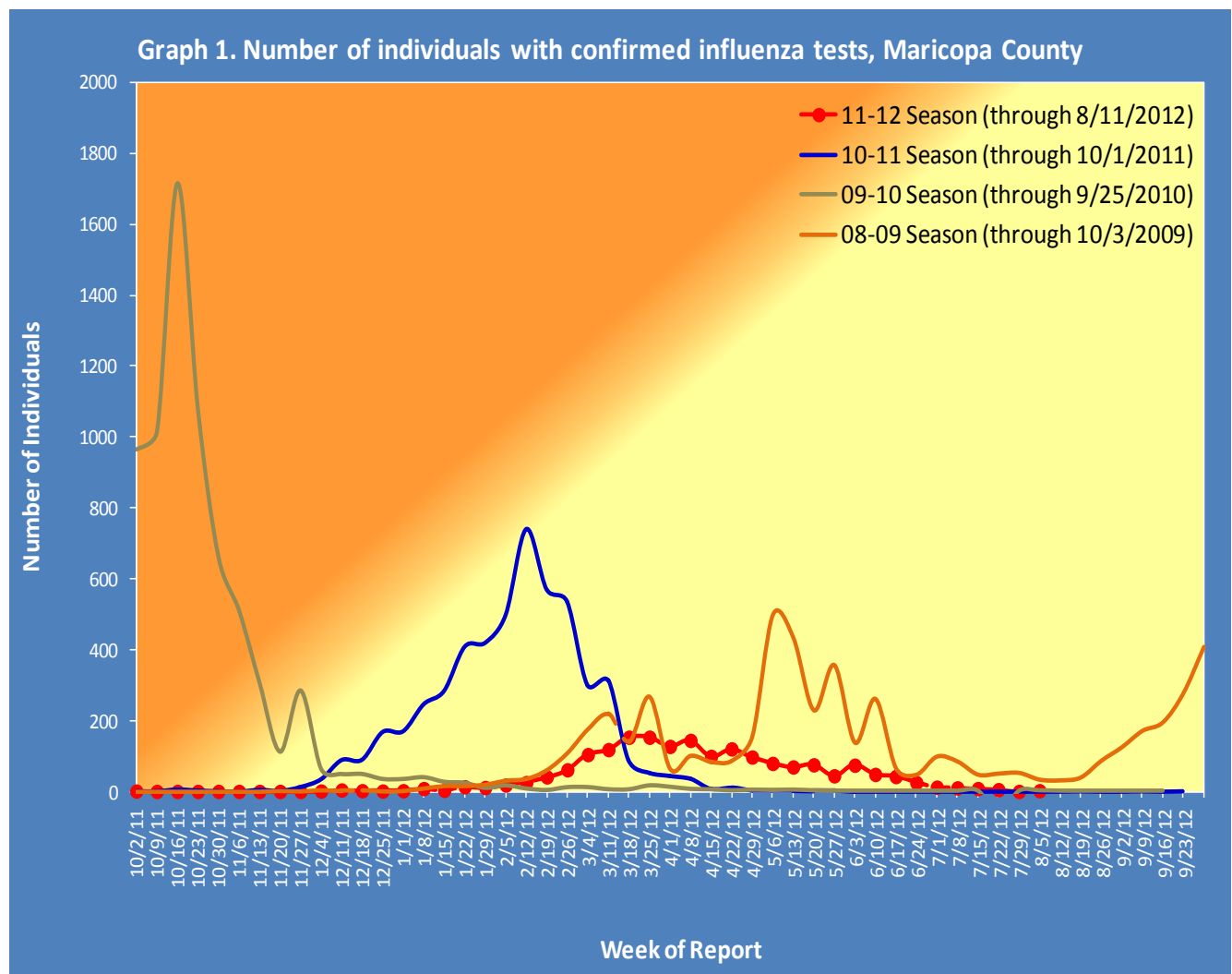
# Maricopa County Department of Public Health INFLUENZA UPDATE

## October 2, 2011 through August 11, 2012

### Posted August 16, 2012

#### Individuals with Laboratory Confirmed Influenza

This influenza season (2011-12), there have been 1,799 individuals confirmed with an influenza test. The chart below shows tests each week for the current season (red) and previous seasons. The broken line represents weeks for which all test results have not yet been collected.



## Types of Influenza

This influenza season, three types of influenza have been reported. Table 1 shows the number and percentage of tests reported by influenza type.

Influenza Type	Number of Tests	Percentage
Swine flu (Influenza A, type H1N1)	334	49.5%
Seasonal influenza (Influenza A, type H3)	166	24.6%
Influenza B, all types	175	25.9%
		100%
No type determined	1124	--
<b>Total</b>	<b>1799</b>	<b>--</b>

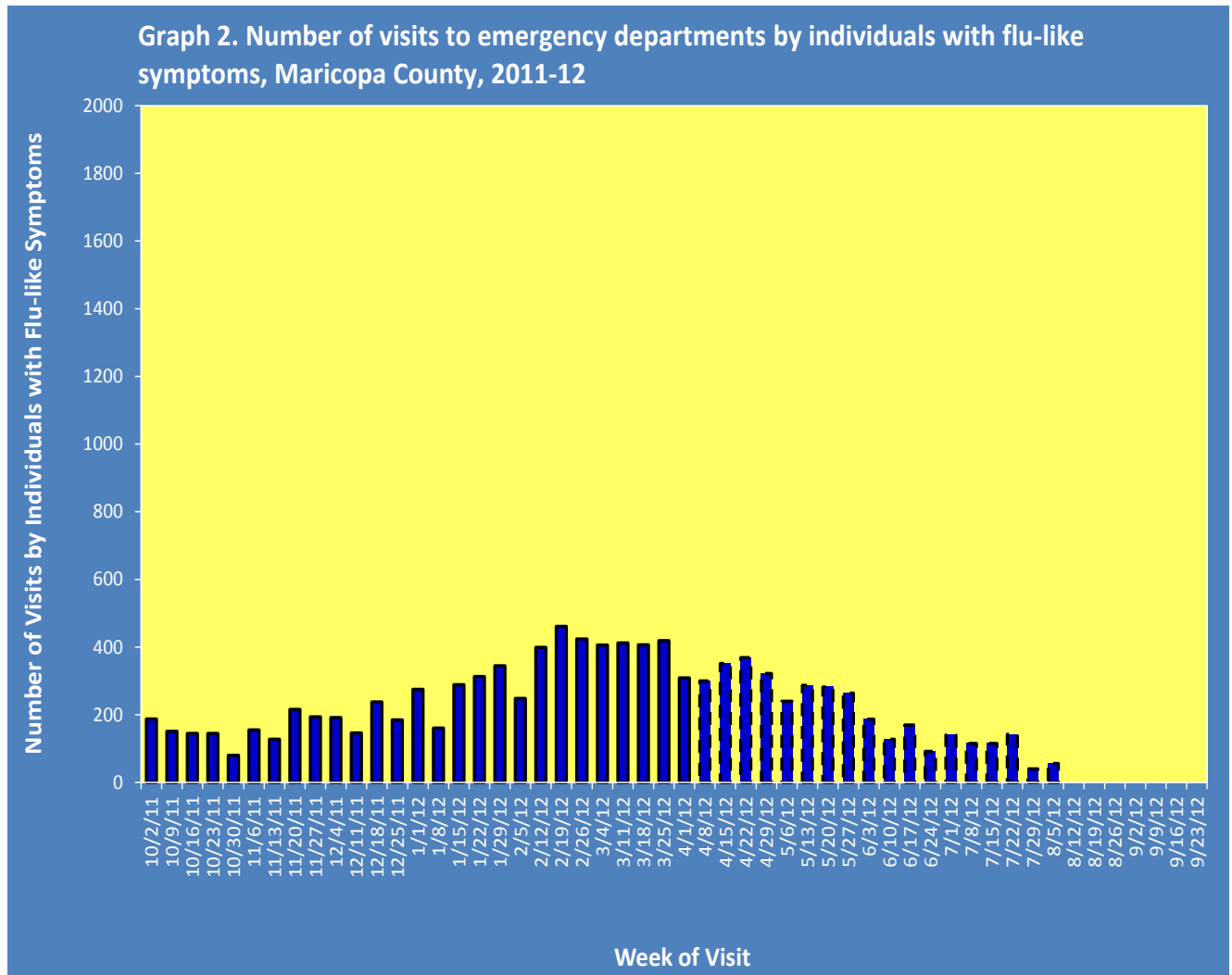
## Pneumonia and Influenza (P&I) Deaths

This influenza season, there have been 1,161 pneumonia and influenza (P&I) deaths (including 9 pediatric deaths (none attributed to influenza)). This is down from last season's total of 1,283 P&I deaths (including 20 pediatric deaths (3 attributed to influenza)). Table 2 shows the number of P&I deaths and the number of influenza deaths that occurred this season and last season.

	<b>Current Season (2011-2012) As of [8/11/2012]</b>		<b>Last Season (2010-2011) As of [8/13/2011]</b>	
	<b>Pneumonia and Influenza</b>	<b>Influenza</b>	<b>Pneumonia and Influenza</b>	<b>Influenza</b>
<b>Pediatric (Under age 18)</b>	9	0	20	3
<b>Adult (18 and Over)</b>	1152	5	1263	16

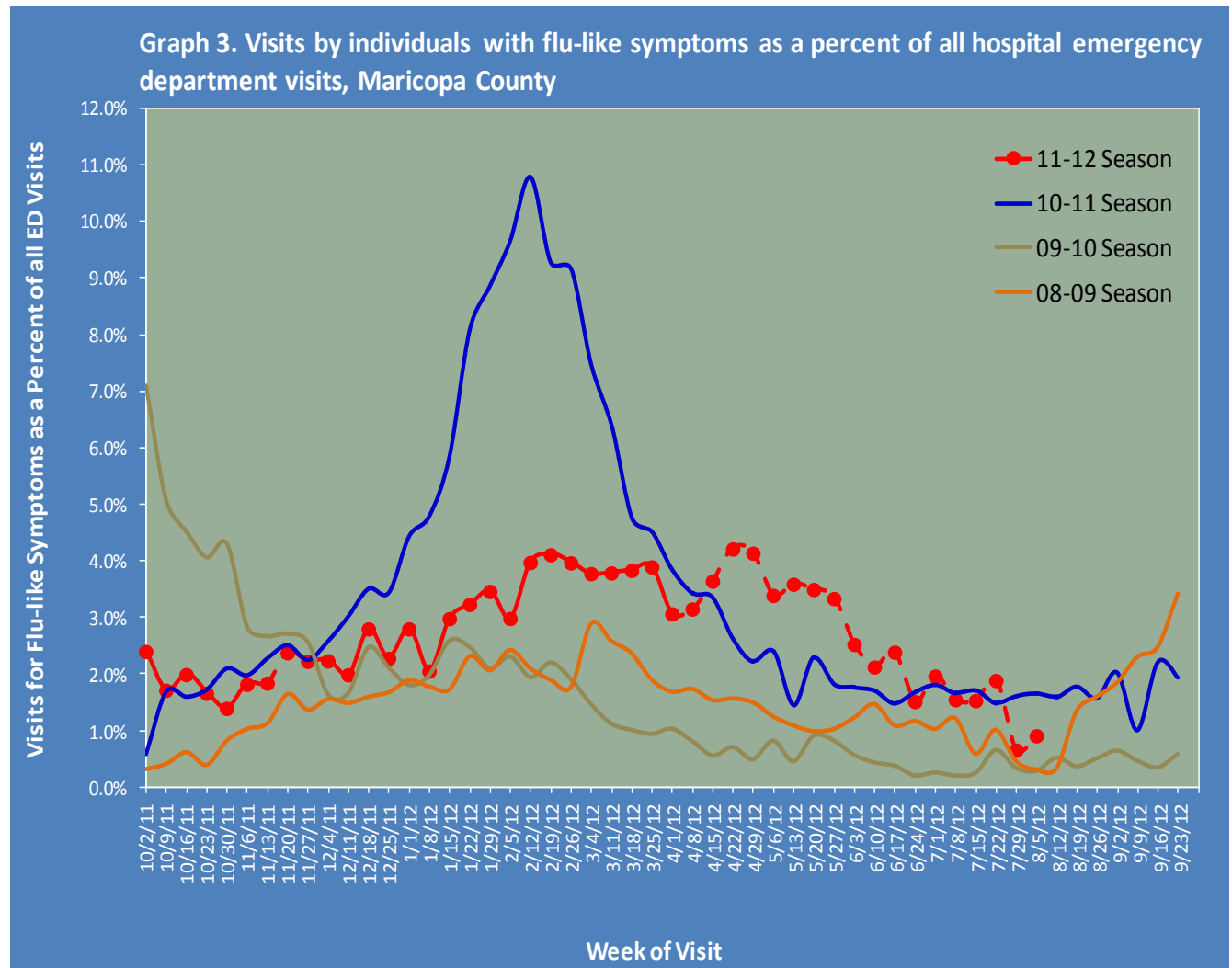
Respiratory Illness Activity at Hospital Emergency Departments

This influenza season, there have been 10,632 visits to emergency departments by individuals with flu-like symptoms. To be counted as an individual with flu-like symptoms, the patient must have both fever and cough or sore throat. Graph 2 shows the number of patients with flu-like symptoms seen at 12 emergency departments. The broken bars represent weeks for which all visits have not yet been collected.



*\*Beginning week 13, all Biosense facilities have been removed from seasonal analysis*

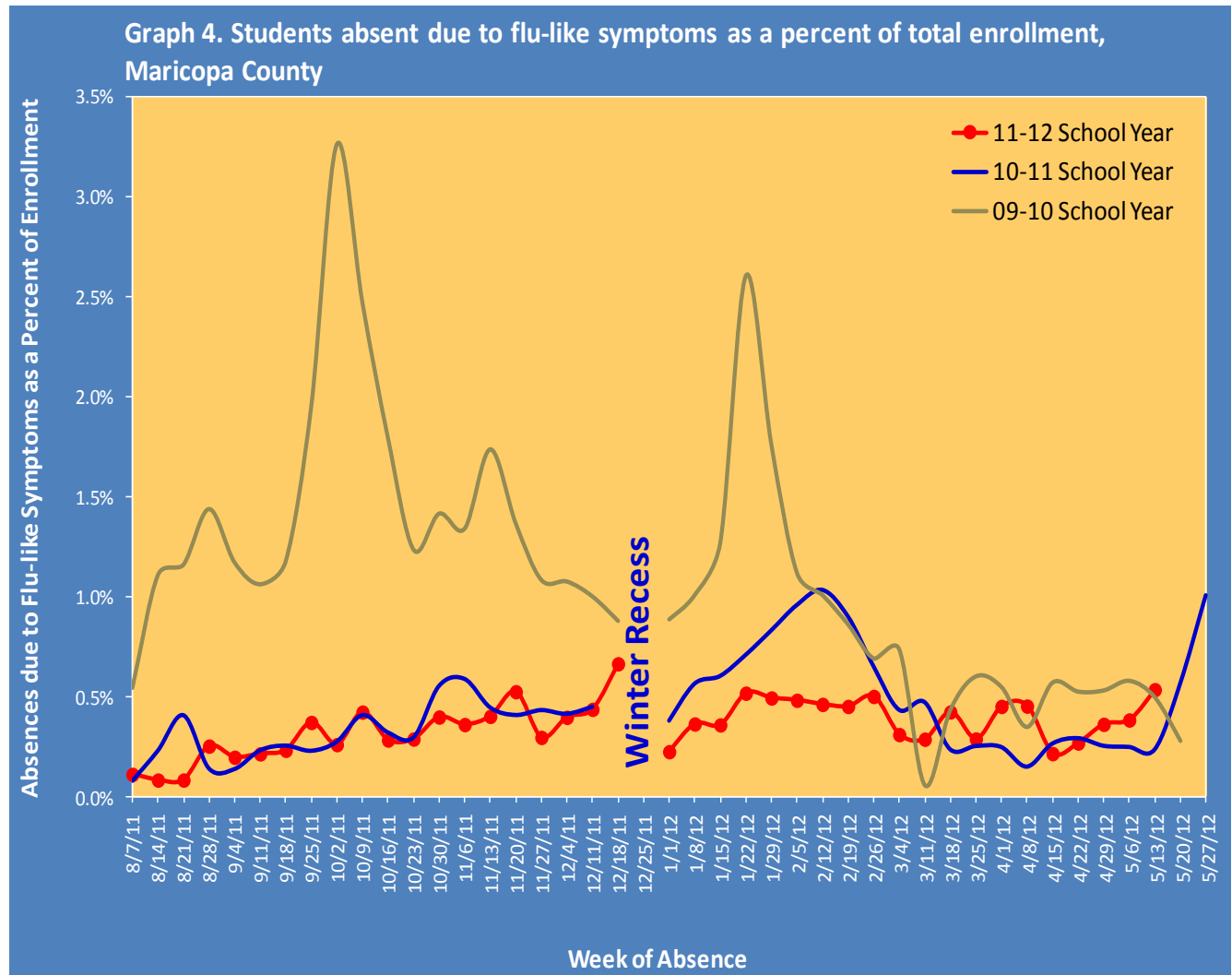
Graph 3 shows what percent of all emergency department visits were individuals with flu-like symptoms (fever and cough/sore throat). The graph shows the trend week by week, with the current season in red. The broken line represents weeks for which all visits have not been collected.



\*Beginning week 13, all Biosense facilities have been removed from seasonal analysis for this season and previous seasons

## Respiratory Illness Activity at Schools

Graph 4 shows the percent of enrolled students in selected public schools who were absent due to flu-like symptoms. To be counted as a student absent with flu-like symptoms, the student must be kept home from school and reported (usually by a parent) to have both a fever and cough or sore throat. The chart shows the trend week by week, for the current school year (red) and previous school years.



*The Maricopa County Department of Public Health wishes to thank all of the  
influenza surveillance participants:*

*Arizona Department of Health Services  
Local Hospital Emergency Departments & Infection Control Practitioners  
Maricopa County Public Schools  
Maricopa County Office of Vital Statistics*

**Questions about this report may be directed to:**  
[epidemiology@mail.maricopa.gov](mailto:epidemiology@mail.maricopa.gov)

**Information on influenza activity for the state, the U.S. and the world may be found  
at the following websites:**

<http://www.azdhs.gov/phs/oids/epi/flu/index.htm> (ADHS)  
<http://www.cdc.gov/flu/weekly/fluactivitysurv.htm> (CDC)  
[http://www.who.int/influenza/gisrs\\_laboratory/updates/en/index.html](http://www.who.int/influenza/gisrs_laboratory/updates/en/index.html) (WHO)