

MARICOPA COUNTY INFLUENZA SUMMARY and RSV UPDATE
WEEK 9 (2/27/11-3/5/11)

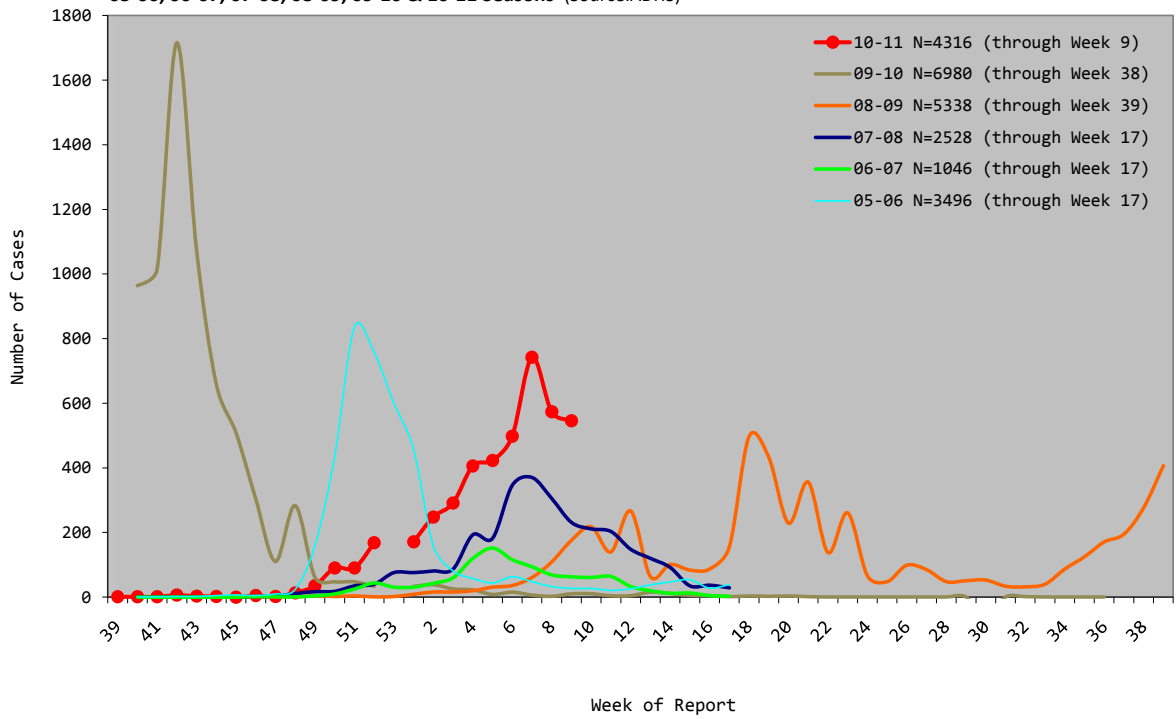
Data contained in this report reflect the time period above except where noted

- **Current Key Findings:** The state of Arizona continues to report widespread activity. Maricopa has a total of 4316 confirmed cases of influenza. Of all cases reported, 78% are Influenza A, 21% B and 1% are of an unknown type. Influenza A sub-typing is as follows: A/Unknown (2200, 65%), A/H3 (879, 26%), 2009 A/H1N1 (290, 9%).
- **Lab Confirmed Influenza:** Between weeks 8 and 9 of the 2010-2011 season, 546 cases of influenza have been confirmed at laboratories.
- **Pneumonia & Influenza Mortality:** 8.17% of deaths from all causes were due to pneumonia or influenza during week 9. This week P&I deaths exceeded both the conservative and traditional thresholds for this time of year.
- **Pediatric Deaths Associated with Laboratory-Confirmed Influenza:** Two pediatric deaths have occurred through week 9 of the 2010-11 season. This time last season 10 pediatric deaths were associated with influenza.
- **Influenza-Like Illness (ILI) (Through week 9)**
 - **Cigna Health Centers (n=35):** 0.41% of visits were due to ILI (provisional data; subject to change as updated information becomes available). **Note: Beginning week 51 of the 2010-11 season, 15 additional facilities were added to the Maricopa County Influenza Surveillance Summary. Added data will influence ILI percentage and number of total visits.*
 - **Hospital Emergency Departments (n=12):** 7.47% of visits were due to ILI. Last week the percentage of hospital emergency department visits due to ILI was 9.17%.
 - **Arizona State University Student Health Services:** 2.02% of visits were due to ILI. Last week, 3.01% of visits were due to ILI.
- **Selected Emergency Department (ED) Visits: (n=8)**
 - 0.42% of all visits were due to ILI. (As of 3/11/2011)
 - 16.09% of all visits were due to a respiratory syndrome. (As of 3/11/2011)
- **School Syndromic Surveillance** (criteria: ≥ 3 days/week of reporting and 50% known absenteeism): 0.44% of students were absent from school due to an influenza-like-illness. (As of 3/11/2011)
- **Respiratory Syncytial virus (RSV):** 290 new cases of RSV have been reported during week 9. Last week, 319 cases were also reported.

Arizona Influenza Activity Levels: (see definitions at <http://www.cdc.gov/flu/weekly/fluactivity.htm>)

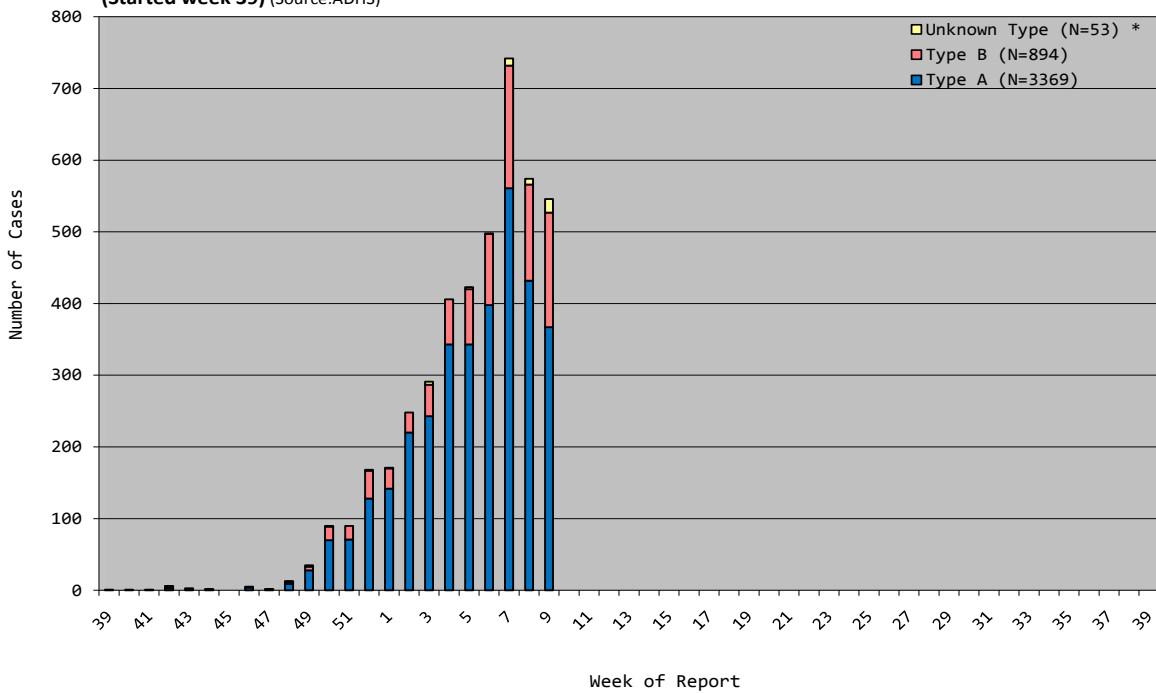
| | 2010-2011 | 2009-2010 | 2008-2009 | 2007-2008 | 2006-2007 |
|---------------------------------------|----------------|-------------------------|--|---------------|------------------------|
| This Week | Widespread | Sporadic | Widespread | Widespread | Regional |
| Last Week | Widespread | Sporadic | Widespread | Widespread | Regional |
| Date First Case Confirmed | Sept. 28, 2010 | Confirmed during summer | Nov. 19, 2008 | Nov. 19, 2007 | Nov. 17, 2006 |
| Weeks with Widespread Activity | Week 52-9 | Weeks 40 – 48 | Weeks 6 – 13 Weeks 17 – 24 Weeks 35 – 39 | Weeks 4 – 12 | No widespread activity |

**Lab-Confirmed Influenza Cases Reported:
05-06, 06-07, 07-08, 08-09, 09-10 & 10-11 Seasons (Source:ADHS)**



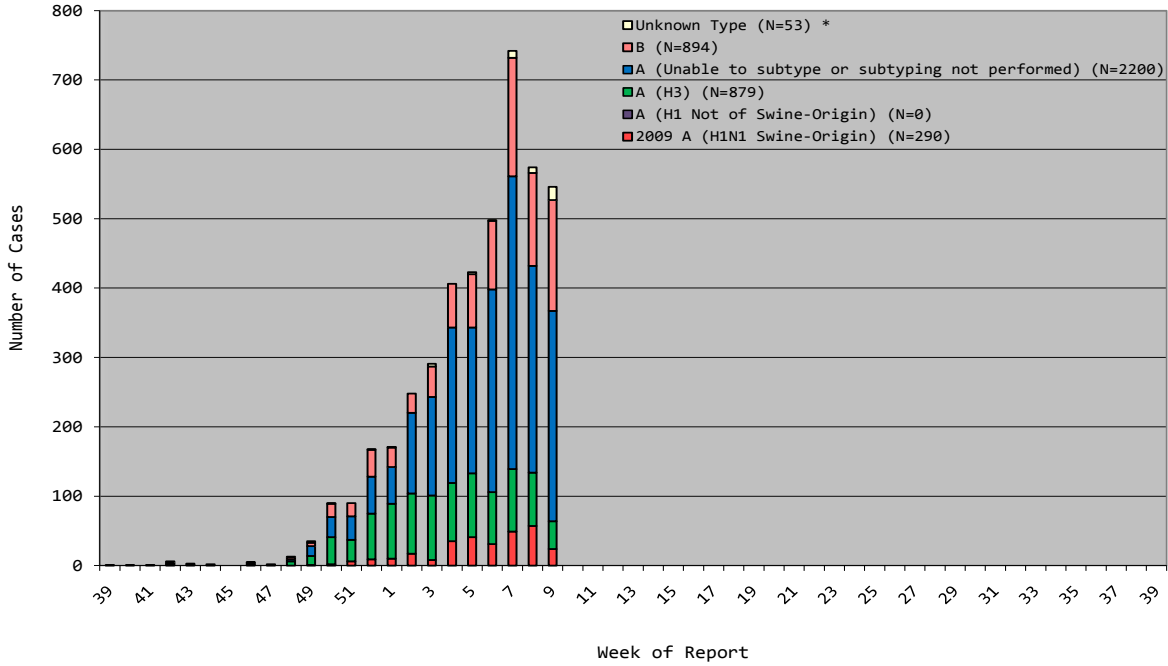
*The 2009-10 and 2010-11 seasons do not contain a week 53.

**Lab-Confirmed Influenza Cases Reported, 10-11 Season
(Started week 39) (Source:ADHS)**



*Sample sizes shown in chart legend represent confirmed influenza cases for the 2010-2011 season only. (Starting week 39)

**Lab-Confirmed Influenza Cases Reported, 10-11 Season
(Started week 39) (Source:ADHS)**



*Sample sizes shown in chart legend represent confirmed influenza cases for the 2010-2011 season only. (Starting week 39)

Influenza-Like Illness (ILI)* Surveillance

***ILI case definition: fever (at least 100°F) AND cough and/or sore throat.**

- During Week 9, 0.41% of patient visits to Cigna Health Care Centers (data from 35 centers, six departments) were due to ILI. During week 9 of the two previous seasons, 0.03% (09-10) and 0.36% (08-09) of patient visits to Cigna Health Care Centers were due to ILI.

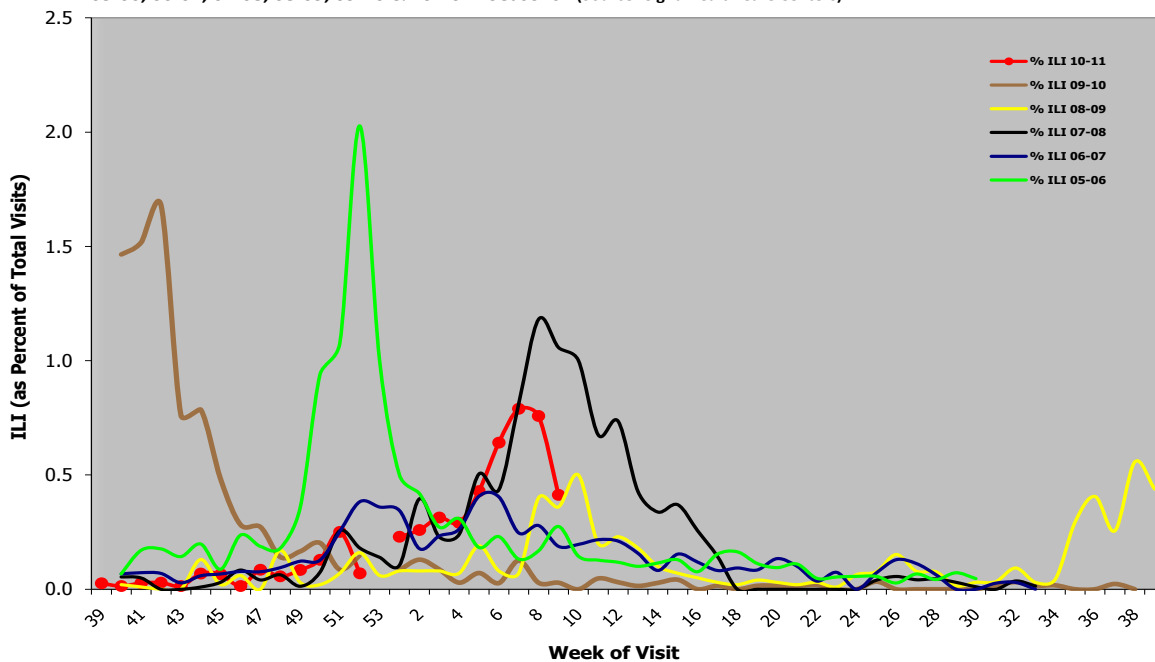
**Provisional data; may change in subsequent reports as updated information becomes available.*

****2009-10 and 2010-11 seasons do not contain a week 53.**

***** Beginning week 51 of the 2010-11 season, 15 new facilities added to Cigna ILI Surveillance.**

- The percentage of Emergency Department visits for ILI was 7.47% for week 9. During week 9 of the two previous seasons, 1.91% (09-10) and 2.89% (08-09) of patient visits were due to ILI.
- Arizona State University Student Health Services had 2.02% of visits due to ILI during week 9.

Cigna Health Care Centers (n=35): ILI Visits as Percentage of Total Visits, 05-06, 06-07, 07-08, 08-09, 09-10 & 10-2011 Seasons* (Source: Cigna Health Care Centers)

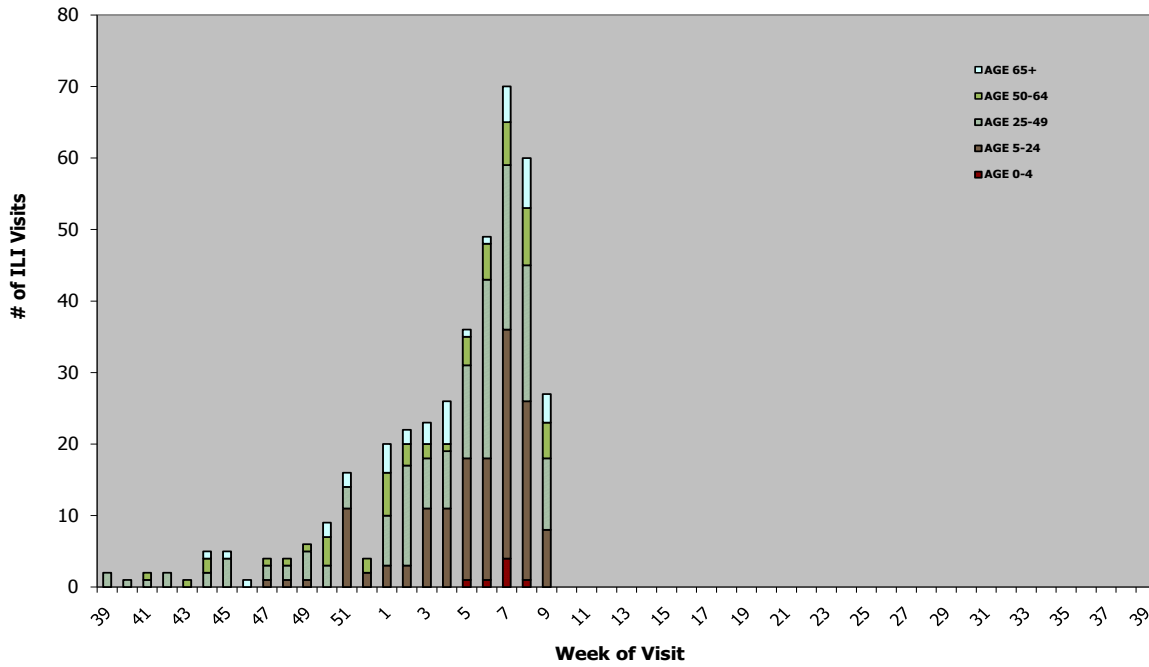


*Data may change in subsequent reports as updated information becomes available.

**The 2009-10 and 2010-11 seasons do not contain a week 53.

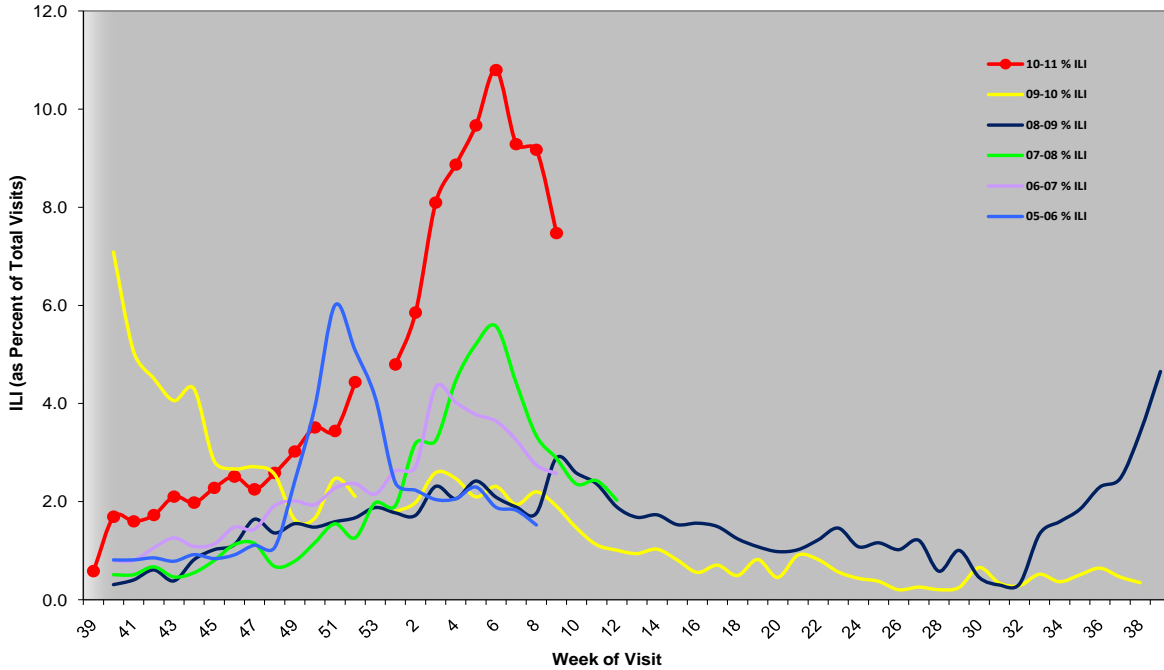
***15 new facilities added week 51, 2010-11 season.

Cigna Health Care Centers (n=35): Number of Visits for Influenza-Like Illness (by age group) 10-11 Season
 (Source: Cigna Health Care Centers)



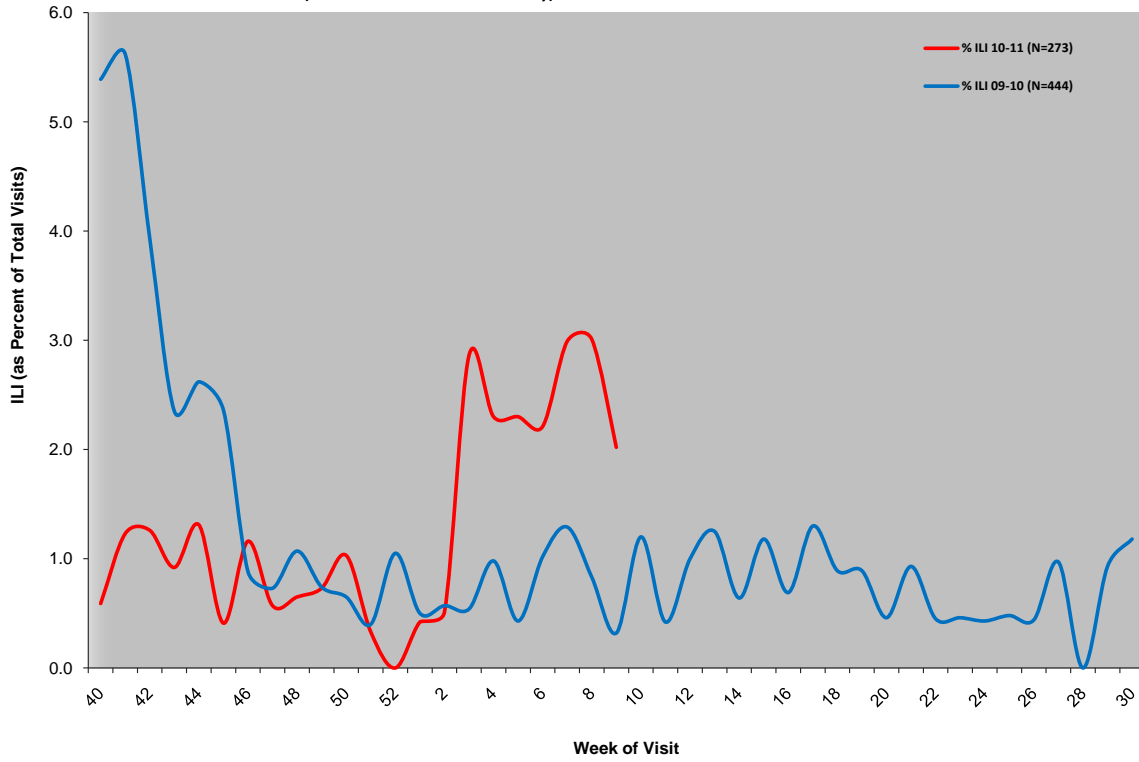
*Data may change in subsequent reports as updated information becomes available.
 ***15 new facilities added week 51, 2010-11 season.

Hospital Emergency Departments (n=12): ILI Visits as Percentage of Total Visits
 05-06, 06-07, 07-08, 08-09, 09-10 & 10-11 Seasons
 (Source: 12 Emergency Departments)

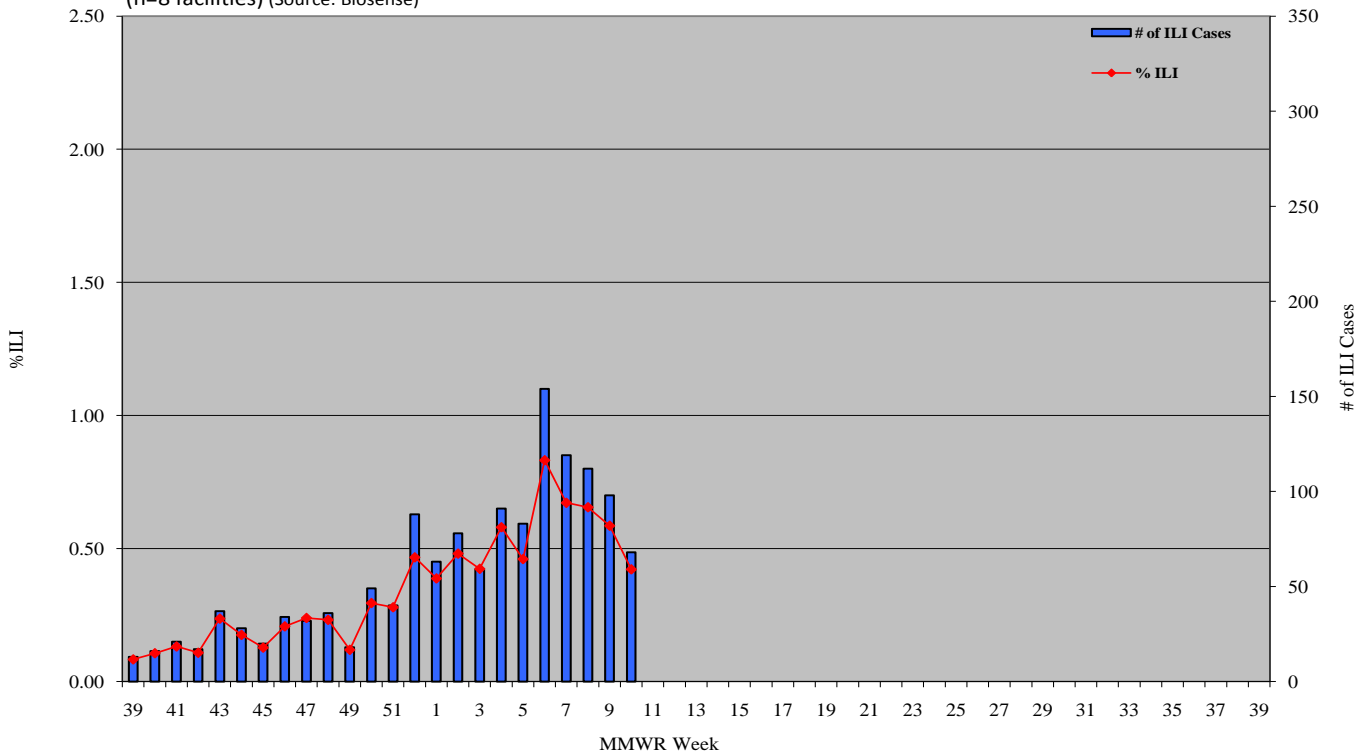


*The 2009-10 and 2010-11 seasons do not contain a week 53.

Arizona State University Student Health Services: ILI Visits as Percentage of Total Visits
09-10 & 10-2011 Seasons* (Source: Arizona State University)

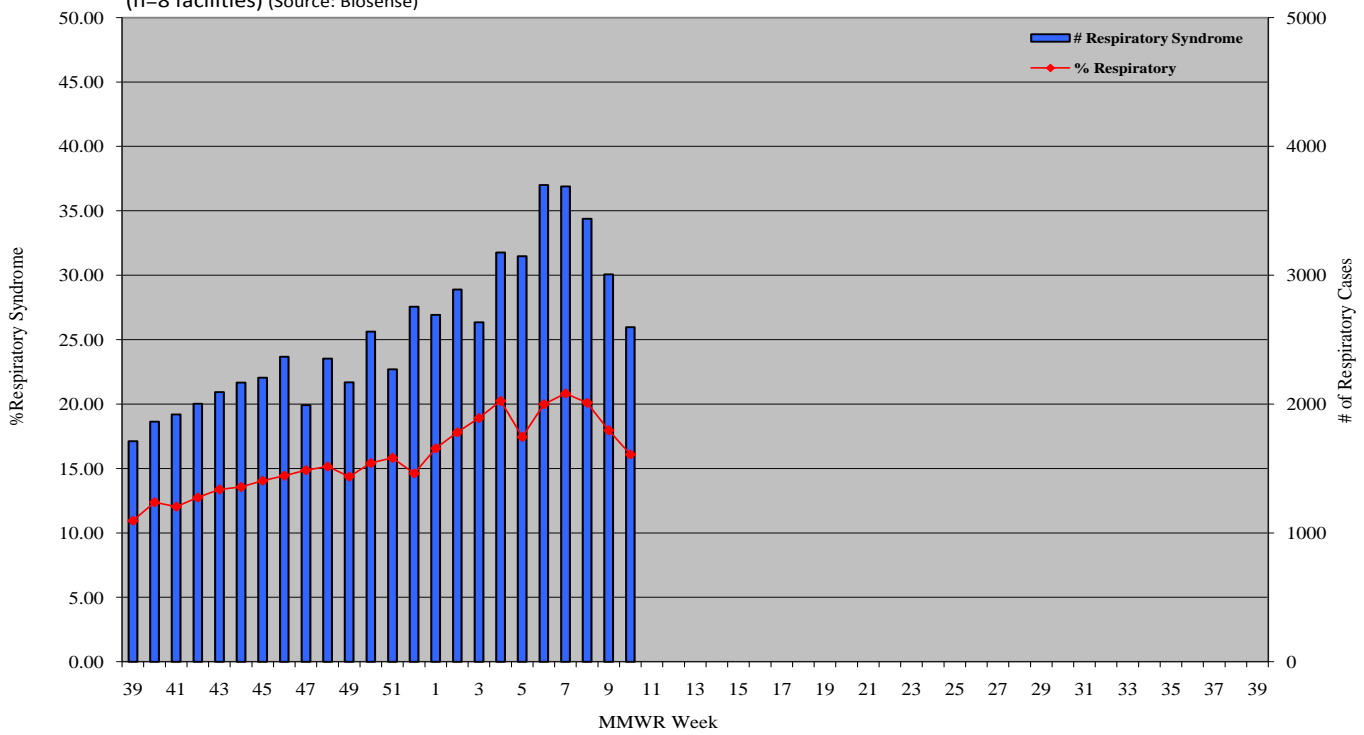


Selected Emergency Departments Weekly Syndromic Surveillance: Influenza-Like-Illness
(n=8 facilities) (Source: Biosense)



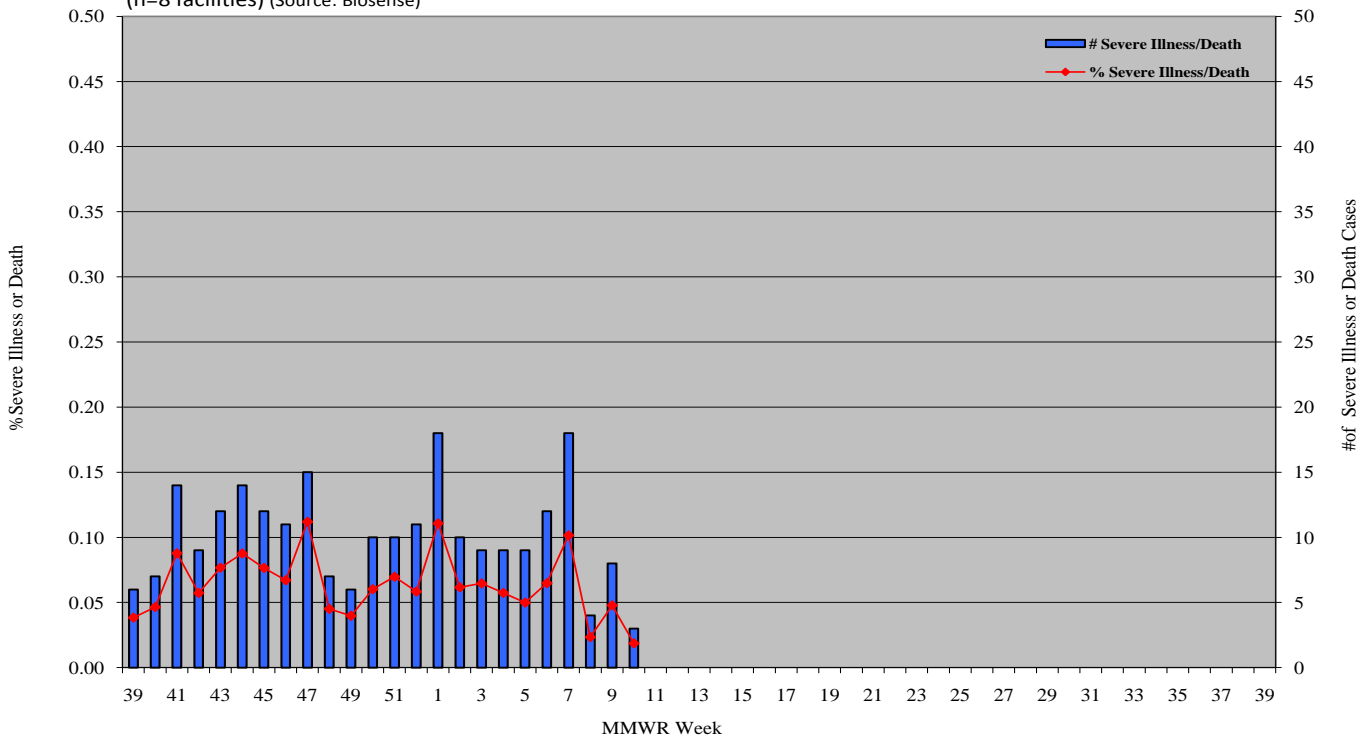
Selected Emergency Departments Weekly Syndromic Surveillance: Respiratory Syndromes

(n=8 facilities) (Source: Biosense)

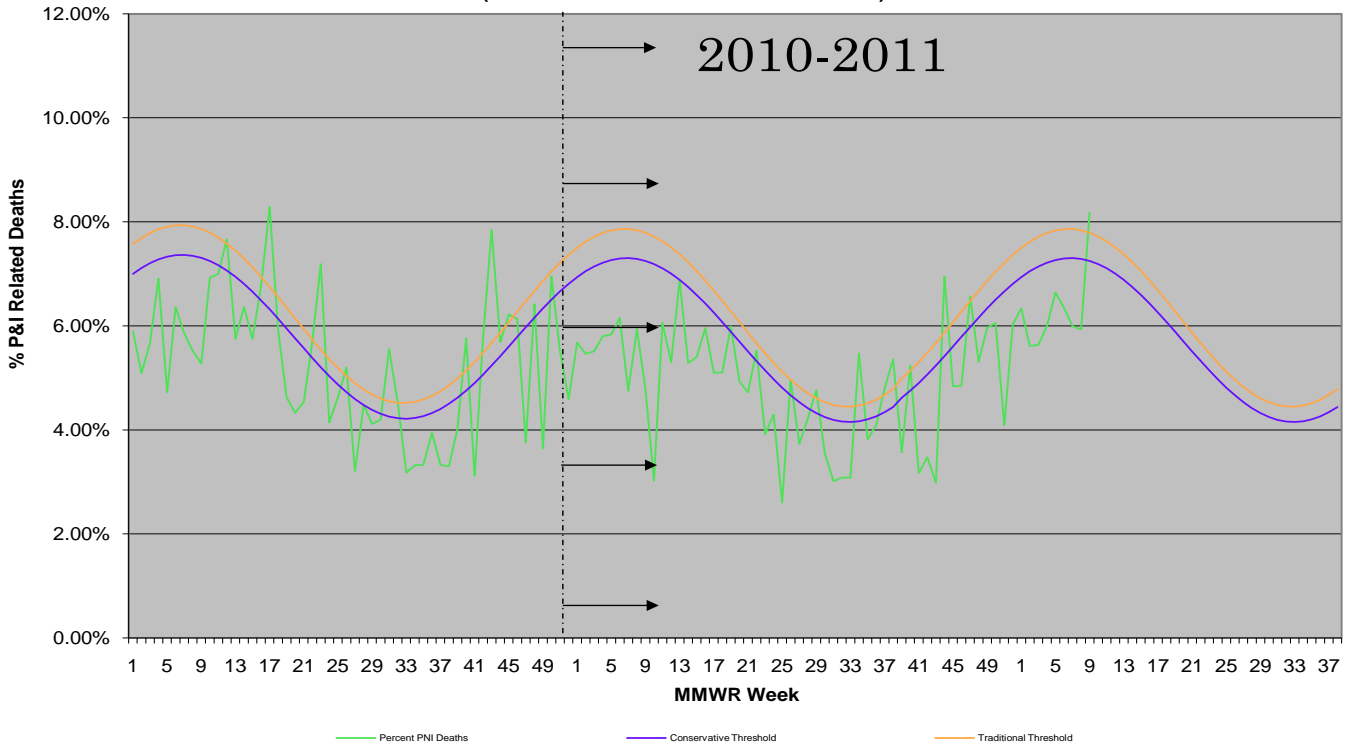


Selected Emergency Departments Weekly Syndromic Surveillance: Severe Illness/Deaths

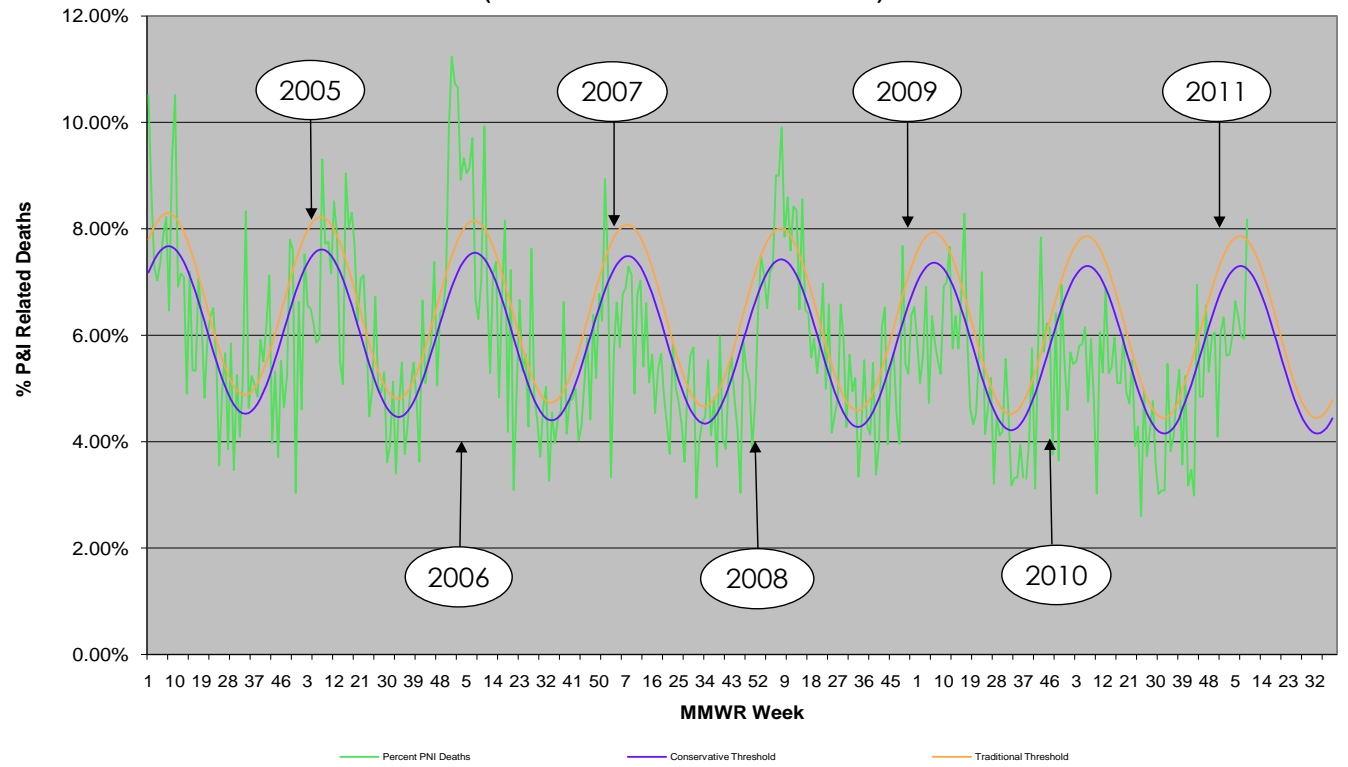
(n=8 facilities) (Source: Biosense)



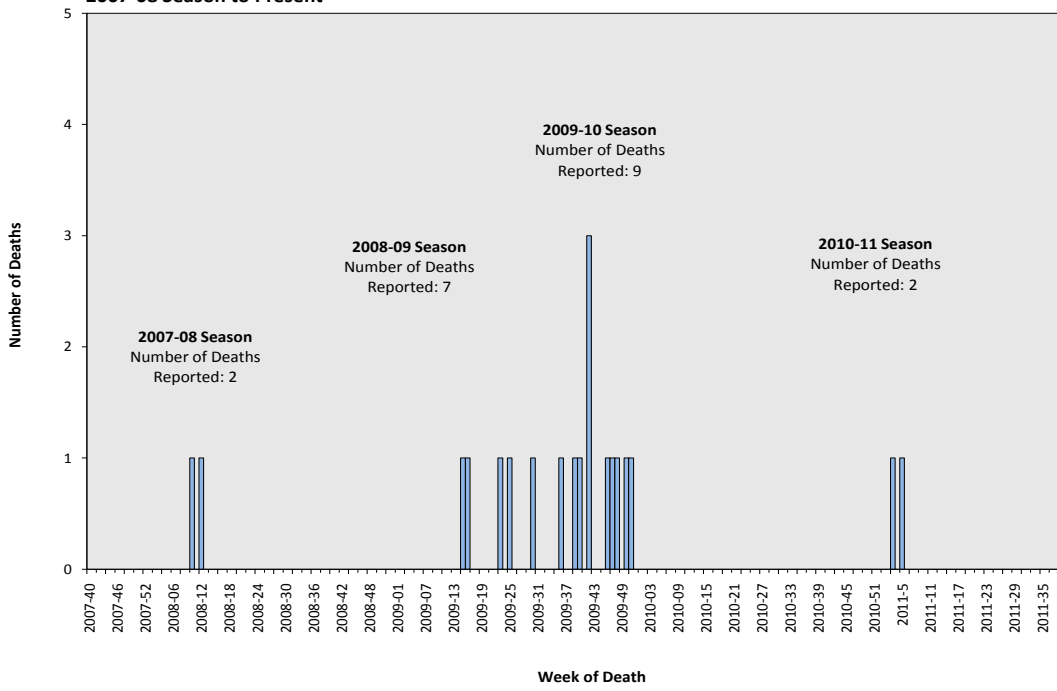
**Maricopa County 2010-2011
Pneumonia and Influenza Related Deaths**
(Source: MCDPH Office of Vital Statistics)



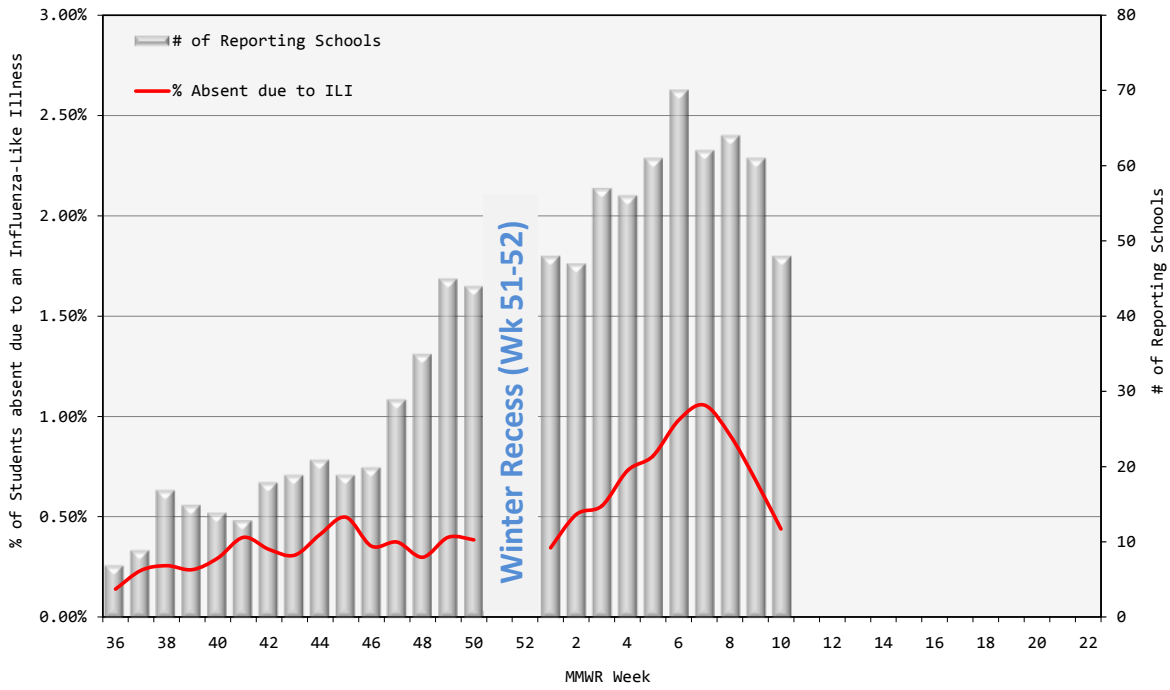
**Maricopa County 2004-2011
Pneumonia and Influenza Related Deaths**
(Source: MCDPH Office of Vital Statistics)



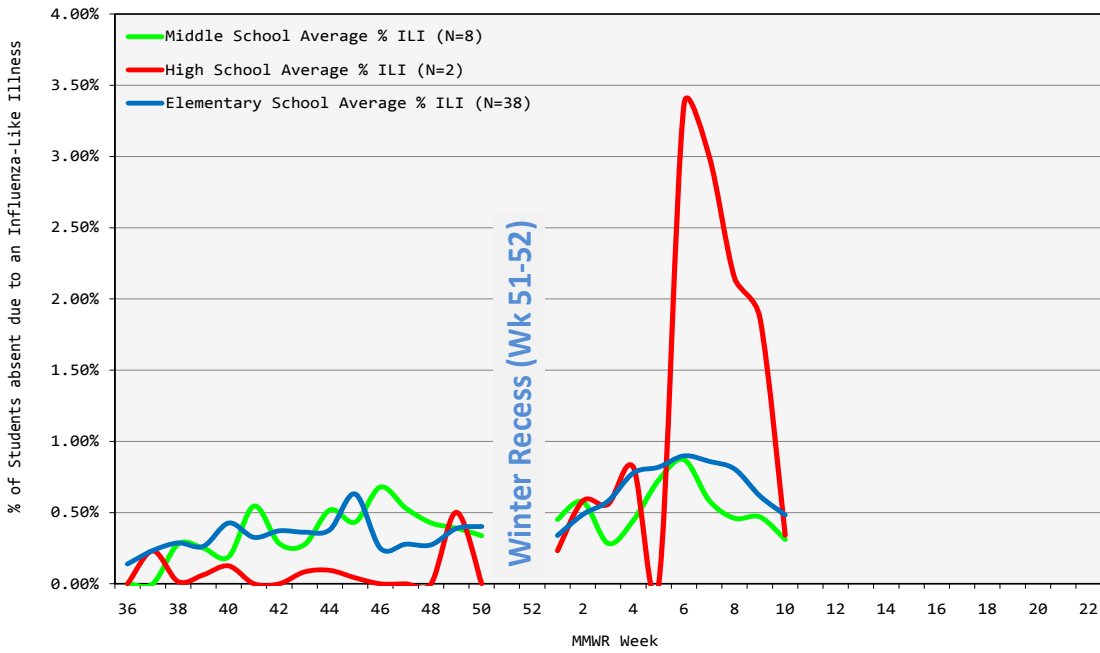
**Number of Pediatric Deaths Associated with Laboratory-Confirmed Influenza by Week of Death:
2007-08 Season to Present**



Maricopa County 2010-2011:
 School ILI Surveillance by MMWR Week (N=48 Schools) as of 3/11/11



Maricopa County 2010-2011:
 School ILI Surveillance by MMWR Week (N=48 Schools) as of 3/11/11



Glossary:

2010-2011 Influenza Season is September 26, 2010 through October 1, 2011. In terms of the surveillance weeks recognized by the Centers for Disease Control, the 2010-11 Season is Week 39 2010 through Week 39 2011.

Activity Levels: Indicator of the geographic spread of influenza activity, reported to CDC by all states each week.

Widespread: Increased influenza-like illness from sentinel providers (ILI) in three or more regions and large numbers of laboratory-confirmed influenza cases in those regions.

Regional: Increased ILI in two regions and elevated numbers of laboratory-confirmed influenza cases in those regions.

Local: Increased ILI in one region and elevated numbers of laboratory-confirmed influenza cases in that region.

Sporadic: No increase in ILI activity and only isolated laboratory-confirmed influenza cases.

No Activity: No increase in ILI activity and no laboratory-confirmed influenza cases.

Influenza Activity outside Maricopa County

Information on influenza activity outside Maricopa County is available at these sites:

- http://azdhs.gov/phs/oids/epi/flu/az_flu_surv.htm (Arizona Department of Health Services)
- <http://www.cdc.gov/flu/weekly/fluactivity.htm> (CDC)

Due to wide variability between national- and local-level data, it is not appropriate to apply any national baselines or thresholds to the information presented in this report.

Please email any questions about this report to: vjollcaberisha@mail.maricopa.gov

Report generated: 03/11/2011

Influenza Surveillance Participants include:

Arizona Department of Health Services

Cigna Health Care Centers

Arizona State University Campus Health Services

Local Hospital Emergency Departments & Infection Control Practitioners

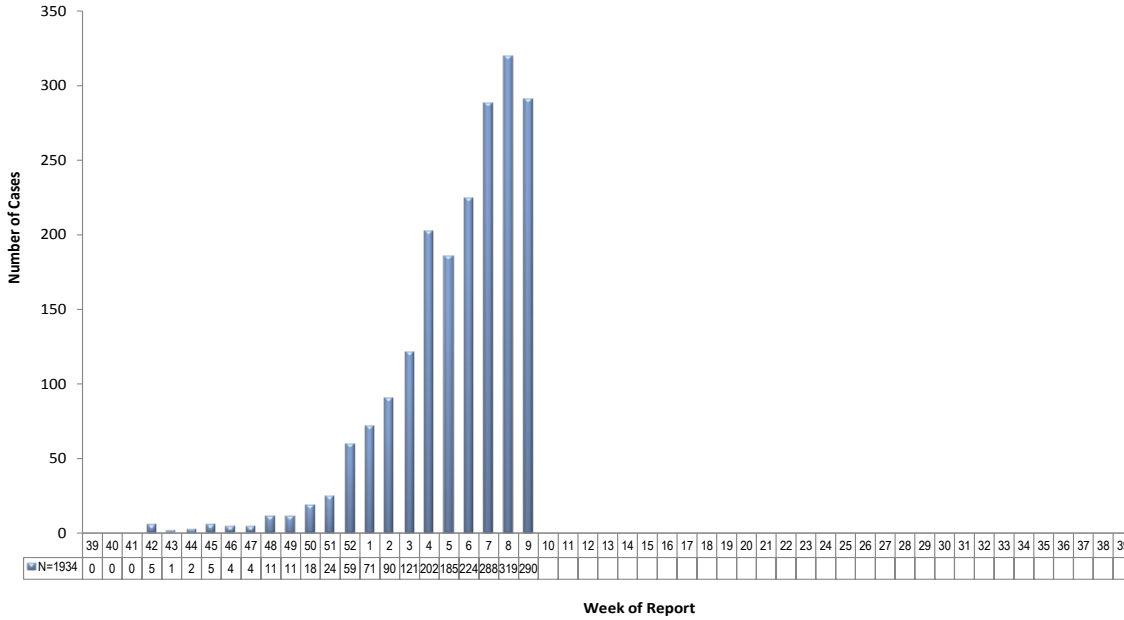
66 Maricopa County Public Schools

MARICOPA COUNTY RSV SUMMARY UPDATE

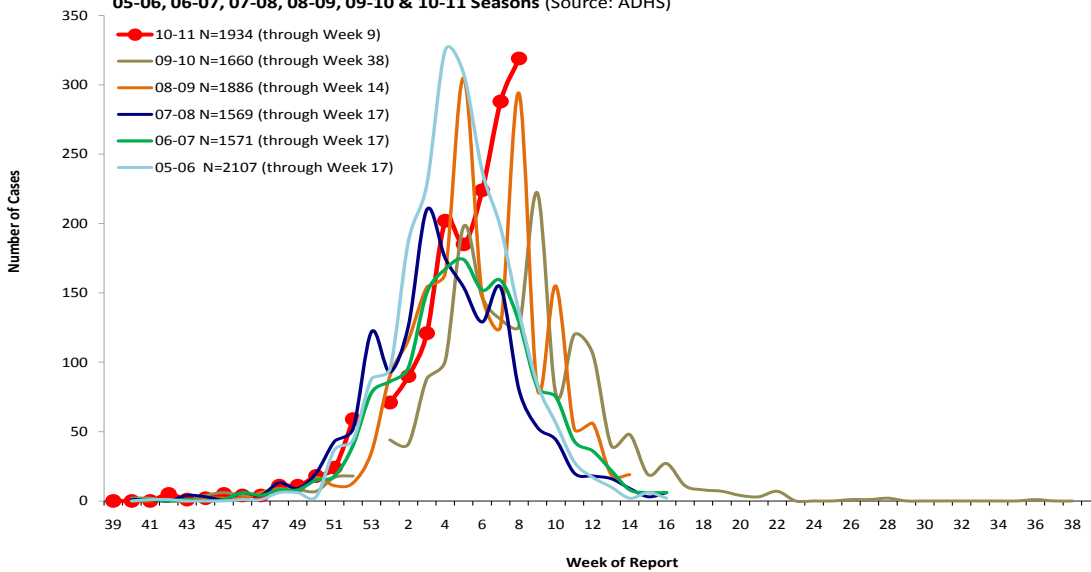
WEEK 9 (2/27/11-3/5/11)

Respiratory Syncytial Virus (RSV) Lab Surveillance: At the time of this report, 1934 lab-confirmed cases of RSV have been reported through week 9.

Lab-Confirmed Respiratory Syncytial Virus (RSV) Cases Reported: 10-11 Season (Source: ADHS)



Lab-Confirmed Respiratory Syncytial Virus (RSV) Cases: 05-06, 06-07, 07-08, 08-09, 09-10 & 10-11 Seasons (Source: ADHS)



*The 2009-10 and 2010-11 seasons do not contain a week 53.