

**MARICOPA COUNTY INFLUENZA SUMMARY and RSV UPDATE**  
**WEEK 4 (1/23/11-1/29/11)**

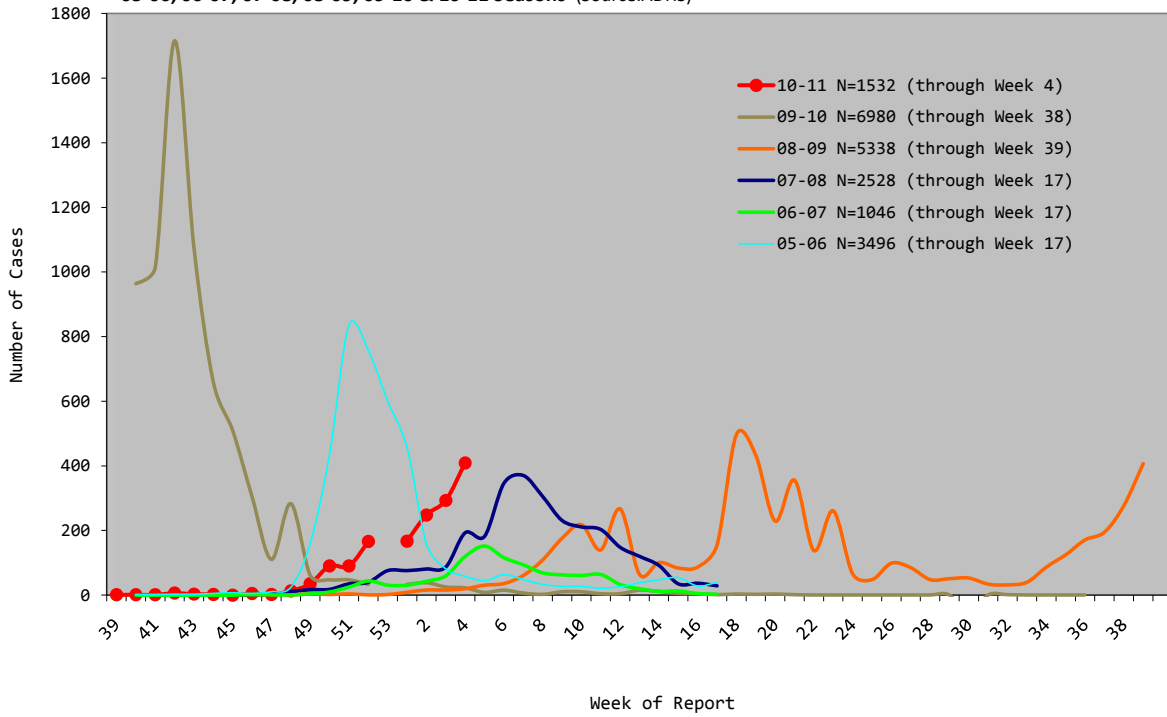
Data contained in this report reflect the time period above except where noted.

- **Current Key Findings:** The state of Arizona continues to report widespread activity. Maricopa has a total of 1532 confirmed cases of influenza, a fourth of which were reported during week 4. Of all 1532 cases, 83% are Influenza A, 16% B and 1% are of an unknown type. Sub-typing is as follows: A/Unknown (677, 44%), A/H3 (503, 33%), 2009 A/H1N1 (89, 6%), B (250, 16%), and Unknown (13, 1%).
- **Lab Confirmed Influenza:** Between weeks 3 and 4 of the 2010-2011 season, 409 cases of influenza have been confirmed at laboratories.
- **Pneumonia & Influenza Mortality:** 6.00% of deaths from all causes were due to pneumonia or influenza during week 4.
- **Pediatric Deaths Associated with Laboratory-Confirmed Influenza:** One pediatric death has occurred in the 2010-11 season. This time last season 10 pediatric deaths were associated with influenza.
- **Influenza-Like Illness (ILI)** (Through week 4)
  - **Cigna Health Centers** (n=35): 0.27% of visits were due to ILI (provisional data; subject to change as updated information becomes available). *\*Note: Beginning week 51 of the 2010-11 season, 15 additional facilities were added to the Maricopa County Influenza Surveillance Summary. Data will be reflected in the week 4 summary and all reports that follow. Added data will influence percentage and number of total visits.*
  - **Hospital Emergency Departments** (n=12): 8.87% of visits were due to ILI. Last week the percentage of hospital emergency department visits due to ILI was 8.09%.
  - **Arizona State University Student Health Services:** 2.30% of visits were due to ILI. Last week, 2.86% of visits were due to ILI.
- **Selected Emergency Department (ED) Visits:** (n=8)
  - 0.49% of all visits were due to ILI. (As of 2/4/2011)
  - 17.98% of all visits were due to a respiratory syndrome. (As of 2/4/2011)
- **School Syndromic Surveillance** (criteria: ≥3 days/week of reporting and 50% known absenteeism): 0.80% of students were absent from school due to an influenza-like-illness. (As of 2/4/2011)
- **Respiratory Syncytial virus (RSV):** 192 new cases of RSV have been reported during week 4. Last week, 122 cases were reported.

**Arizona Influenza Activity Levels:** (see definitions at <http://www.cdc.gov/flu/weekly/fluactivity.htm>)

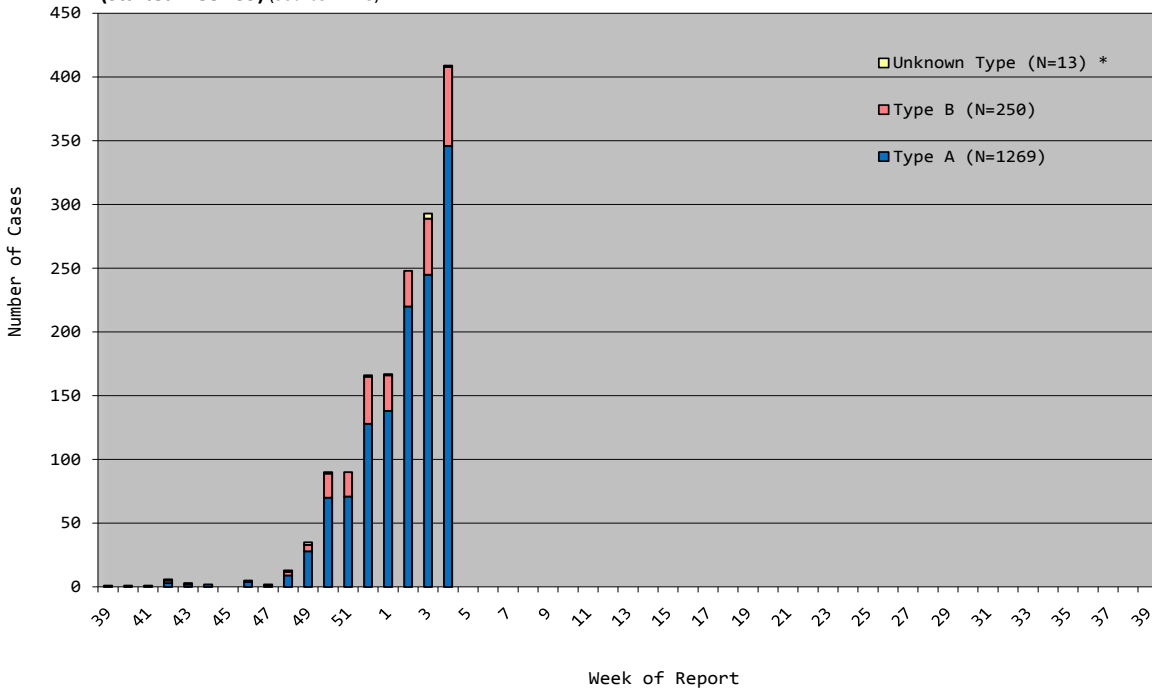
	2010-2011	2009-2010	2008-2009	2007-2008	2006-2007
<b>This Week</b>	Widespread	Sporadic	Regional	Widespread	Local
<b>Last Week</b>	Widespread	Local	Regional	Regional	Local
<b>Date First Case Confirmed</b>	Sept. 28, 2010	Confirmed during summer	Nov. 19, 2008	Nov. 19, 2007	Nov. 17, 2006
<b>Weeks with Widespread Activity</b>	Week 52-4	Weeks 40 – 48	Weeks 6 – 13 Weeks 17 – 24 Weeks 35 – 39	Weeks 4 – 12	No widespread activity

**Lab-Confirmed Influenza Cases Reported:  
05-06, 06-07, 07-08, 08-09, 09-10 & 10-11 Seasons** (Source:ADHS)



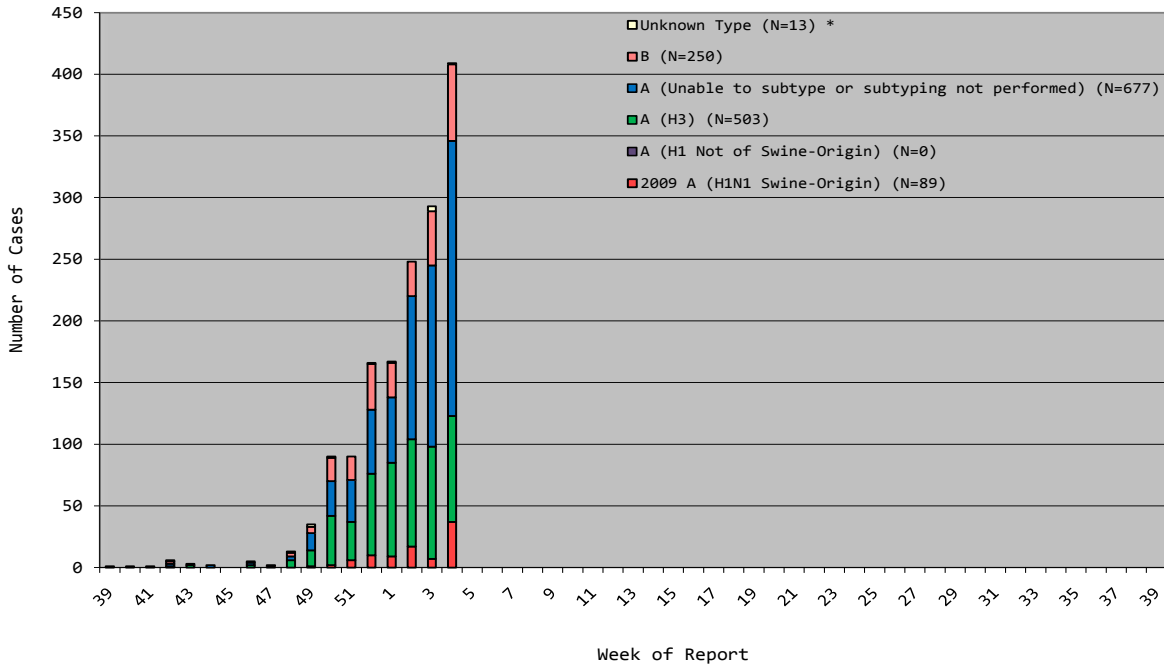
\*The 2009-10 and 2010-11 seasons do not contain a week 53.

**Lab-Confirmed Influenza Cases Reported, 10-11 Season  
(Started week 39)** (Source:ADHS)



\*Sample sizes shown in chart legend represent confirmed influenza cases for the 2010-2011 season only. (Starting week 39)

**Lab-Confirmed Influenza Cases Reported, 10-11 Season**  
**(Started week 39)** (Source:ADHS)



\*Sample sizes shown in chart legend represent confirmed influenza cases for the 2010-2011 season only. (Starting week 39)

## Influenza-Like Illness (ILI)\* Surveillance

**\*ILI case definition: fever (at least 100°F) AND cough and/or sore throat.**

- During Week 4, 0.27% of patient visits to Cigna Health Care Centers (data from 35 centers, six departments) were due to ILI. During week 4 of the two previous seasons, 0.03% (09-10) and 0.07% (08-09) of patient visits to Cigna Health Care Centers were due to ILI.

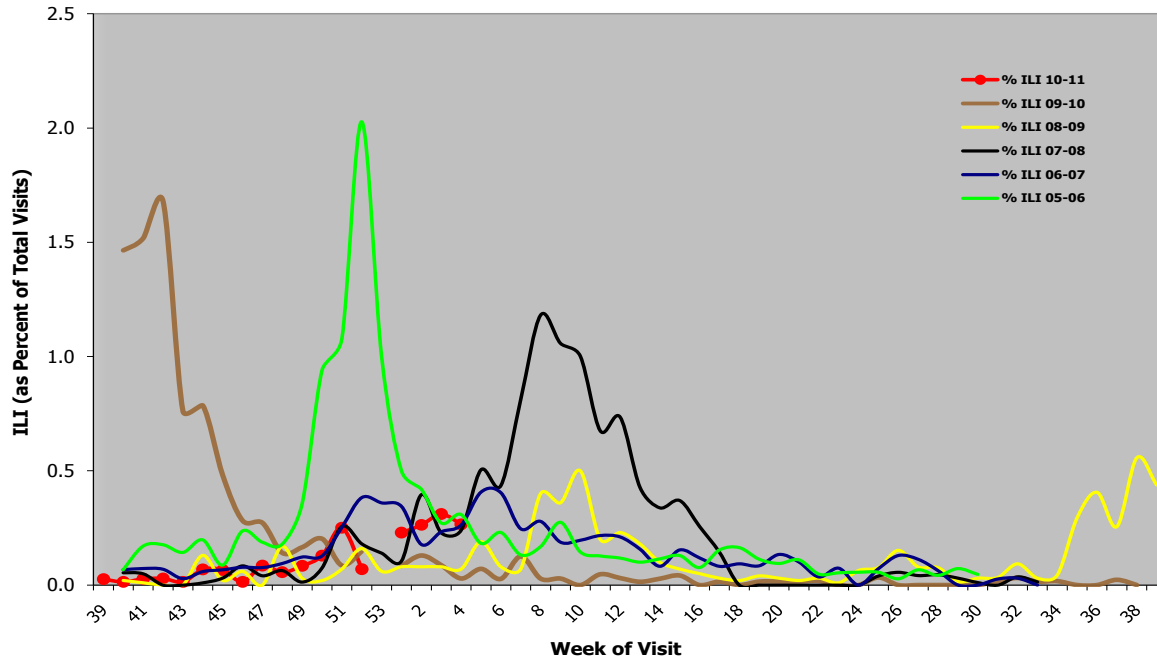
***\*Provisional data; may change in subsequent reports as updated information becomes available.***

***\*\*2009-10 and 2010-11 seasons do not contain a week 53.***

***\*\*\* Beginning week 51 of the 2010-11 season, 15 new facilities added to Cigna ILI Surveillance.***

- The percentage of Emergency Department visits for ILI was 8.87% for week 4. During week 4 of the two previous seasons, 2.47% (09-10) and 3.68% (08-09) of patient visits were due to ILI.
- Arizona State University Student Health Services had 2.30% of visits due to ILI during week 4.

**Cigna Health Care Centers (n=35): ILI Visits as Percentage of Total Visits, 05-06, 06-07, 07-08, 08-09, 09-10 & 10-2011 Seasons\* (Source: Cigna Health Care Centers)**

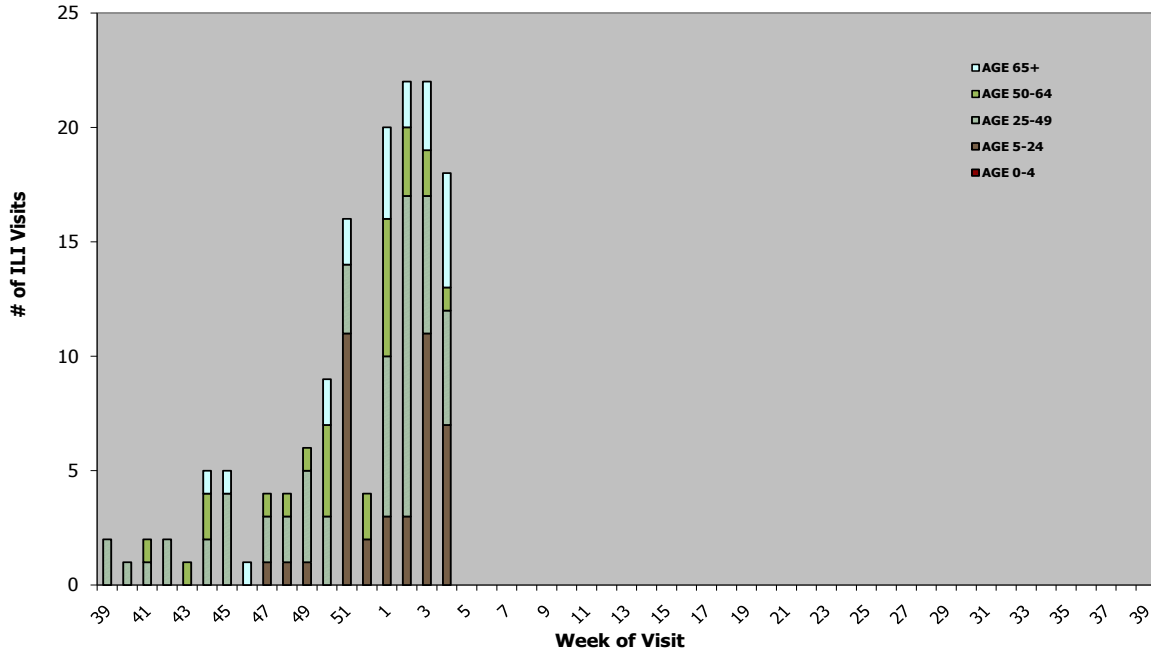


\*Data may change in subsequent reports as updated information becomes available.

\*\*The 2009-10 and 2010-11 seasons do not contain a week 53.

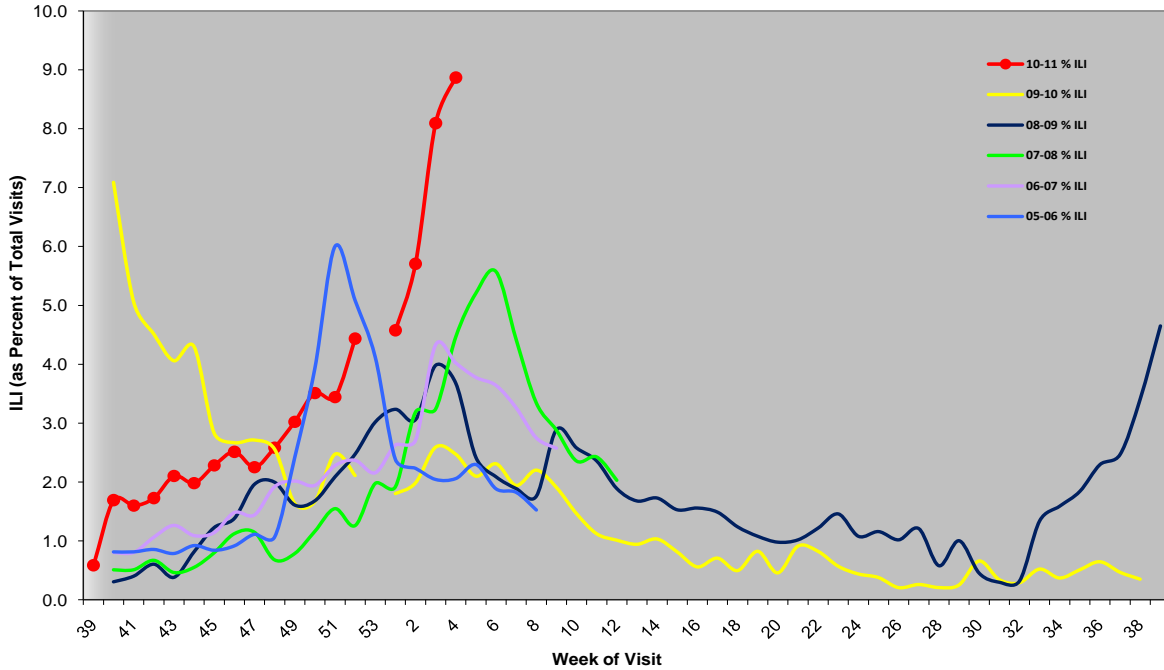
\*\*\*15 new facilities added week 51, 2010-11 season.

**Cigna Health Care Centers (n=35): Number of Visits for Influenza-Like Illness (by age group) 10-11 Season**  
 (Source: Cigna Health Care Centers)



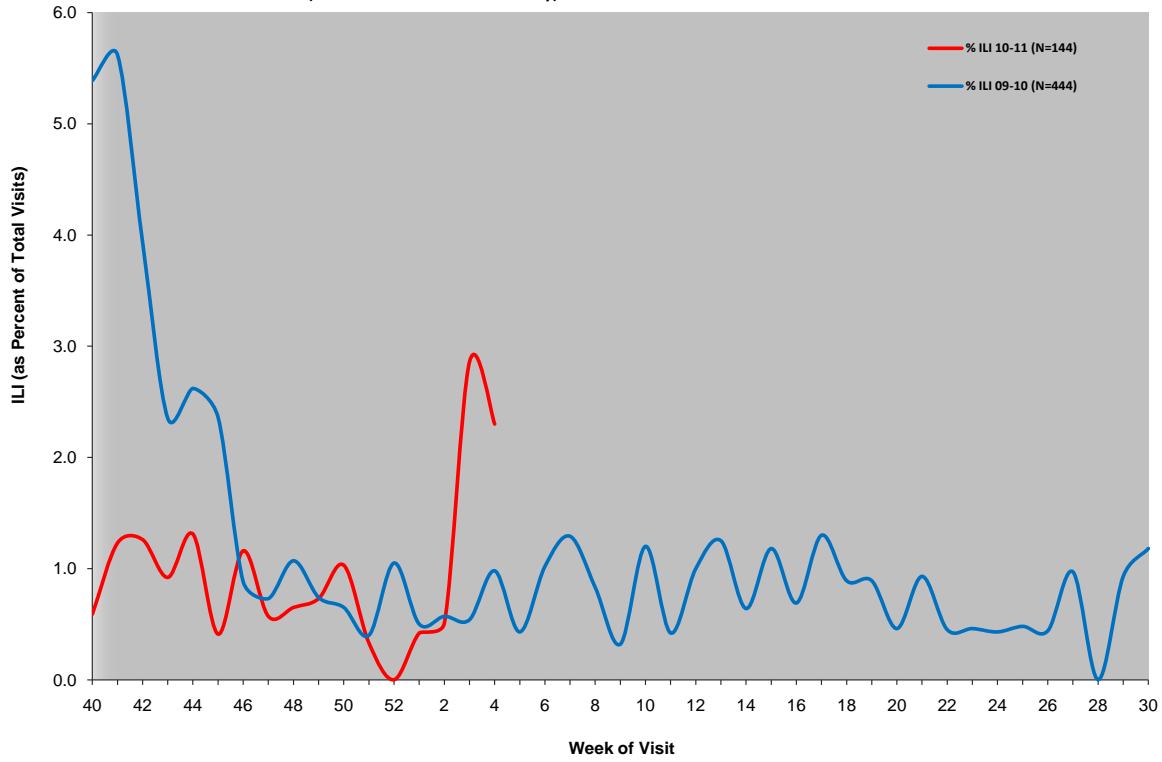
\*Data may change in subsequent reports as updated information becomes available.  
 \*\*\*15 new facilities added week 51, 2010-11 season.

**Hospital Emergency Departments (n=12): ILI Visits as Percentage of Total Visits**  
 05-06, 06-07, 07-08, 08-09, 09-10 & 10-11 Seasons  
 (Source: 12 Emergency Departments)

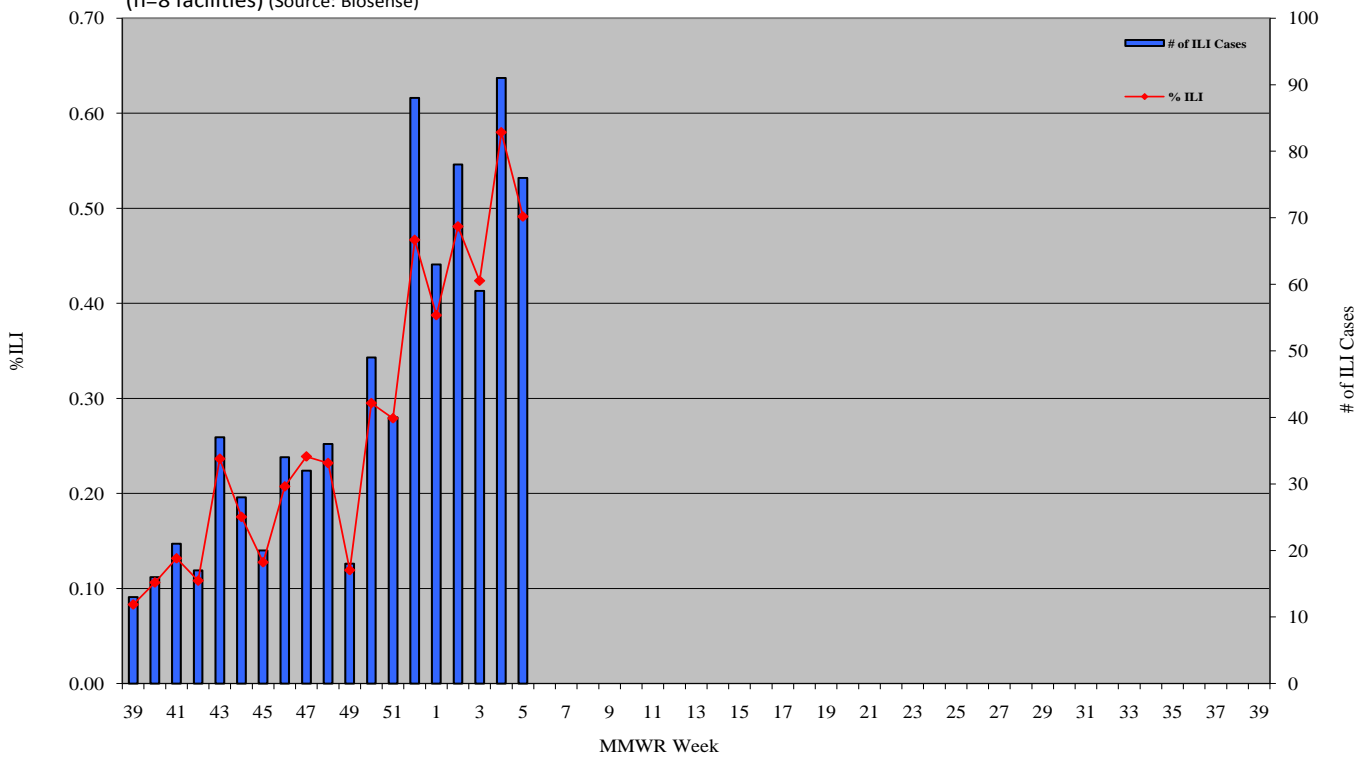


\*The 2009-10 and 2010-11 seasons do not contain a week 53.

Arizona State University Student Health Services: ILI Visits as Percentage of Total Visits  
09-10 & 10-2011 Seasons\* (Source: Arizona State University)

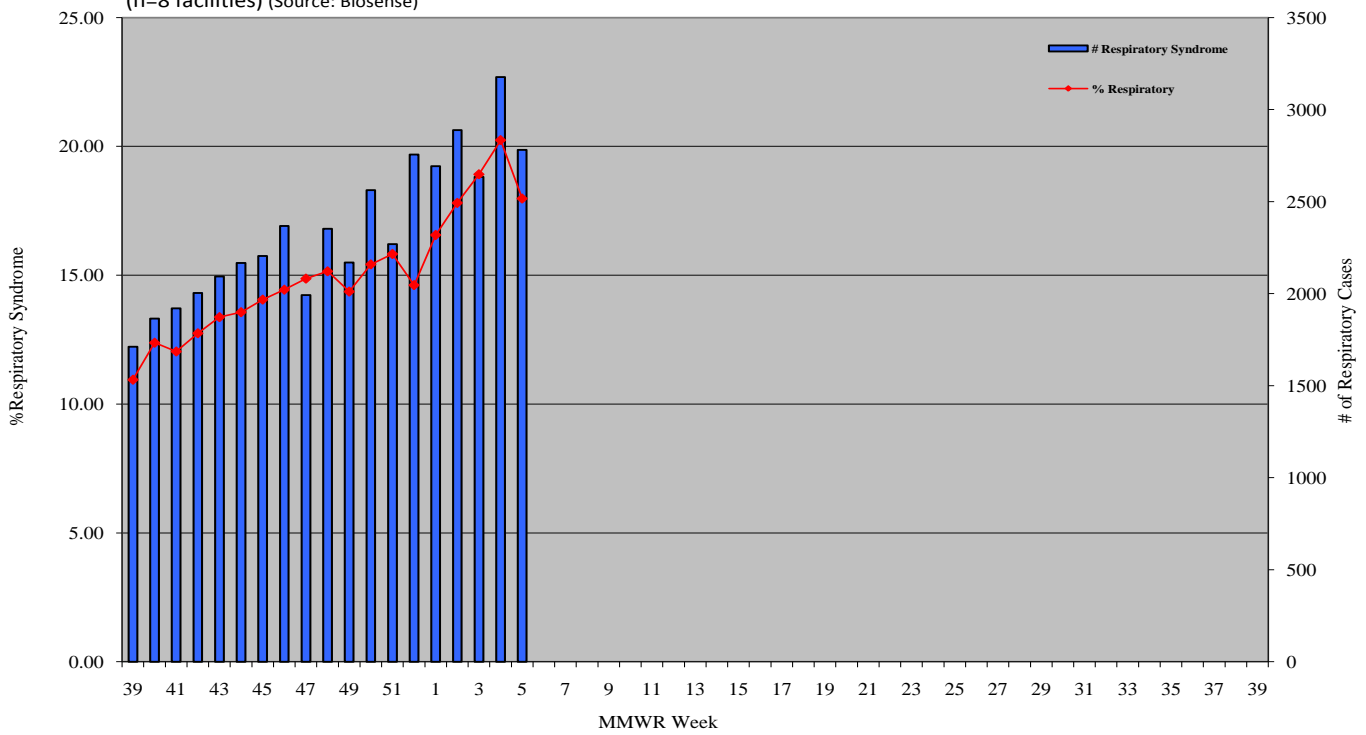


Selected Emergency Departments Weekly Syndromic Surveillance: Influenza-Like-Illness  
(n=8 facilities) (Source: Biosense)



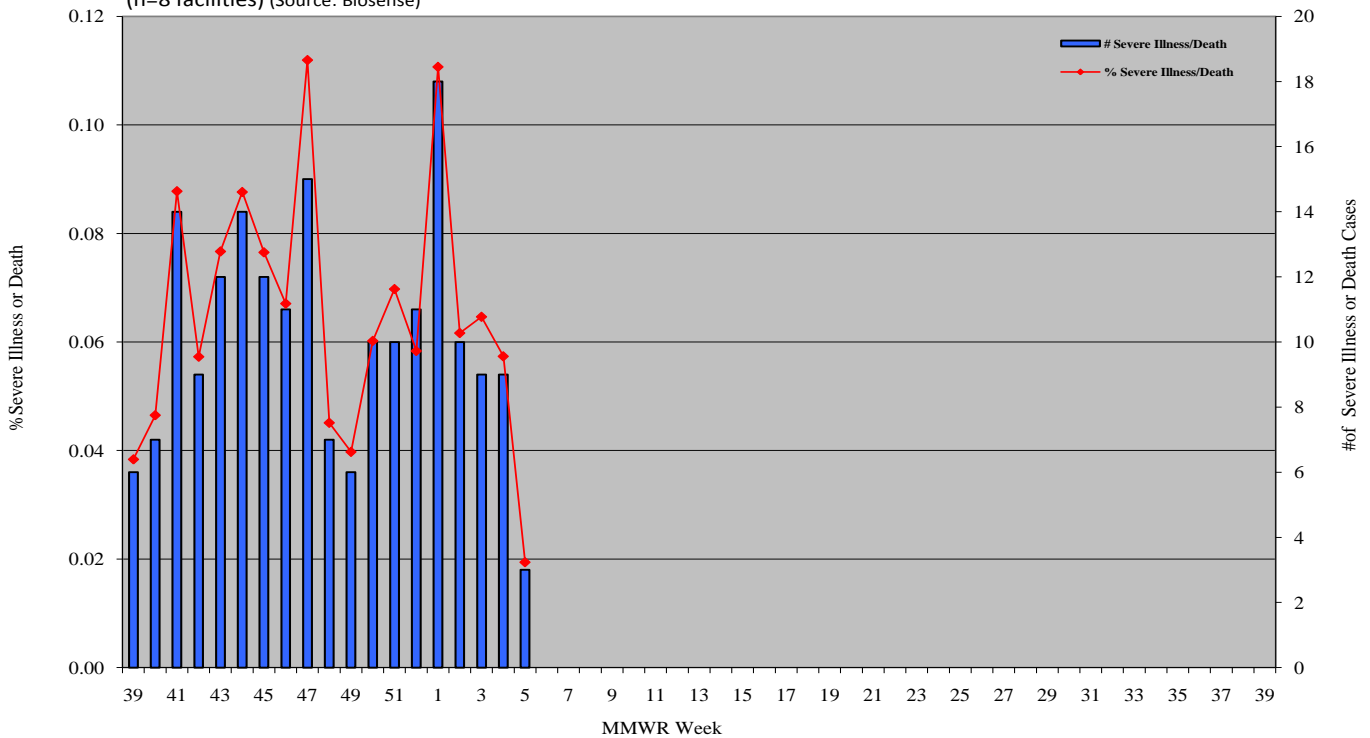
**Selected Emergency Departments Weekly Syndromic Surveillance: Respiratory Syndromes**

(n=8 facilities) (Source: Biosense)

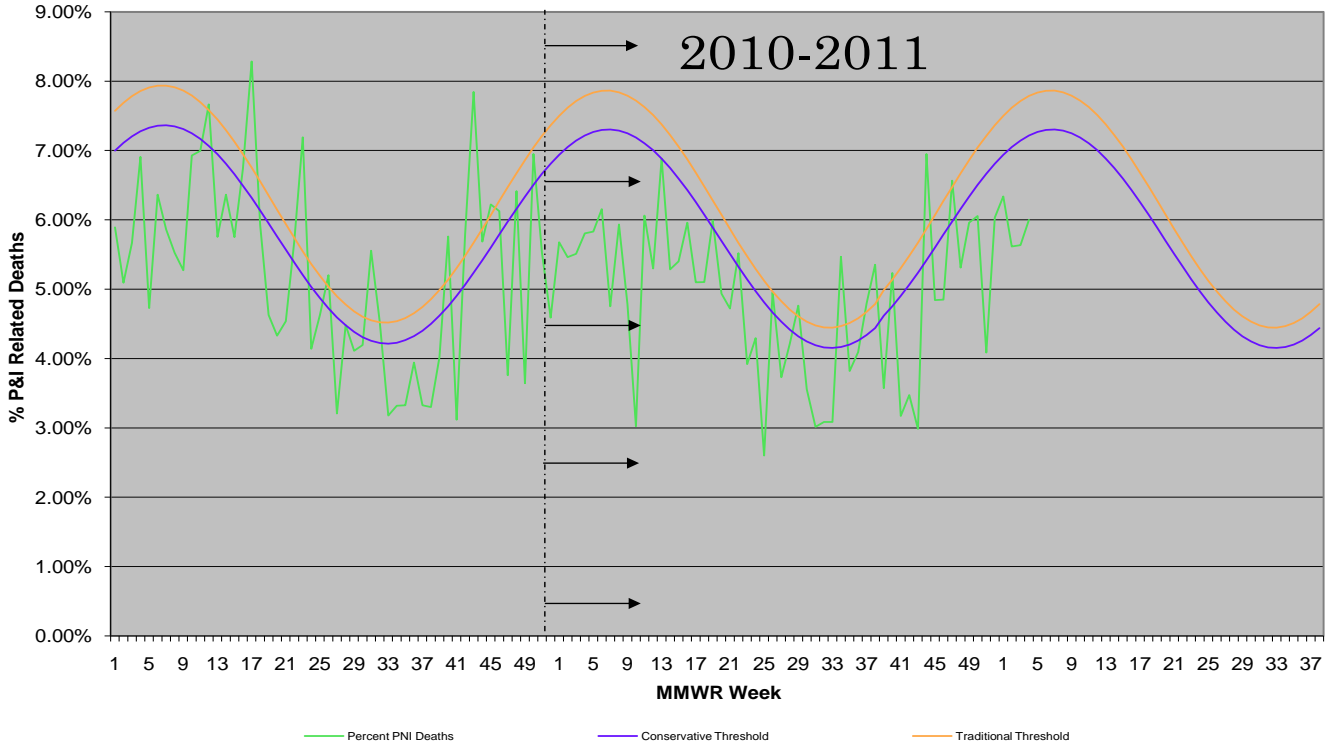


**Selected Emergency Departments Weekly Syndromic Surveillance: Severe Illness/Deaths**

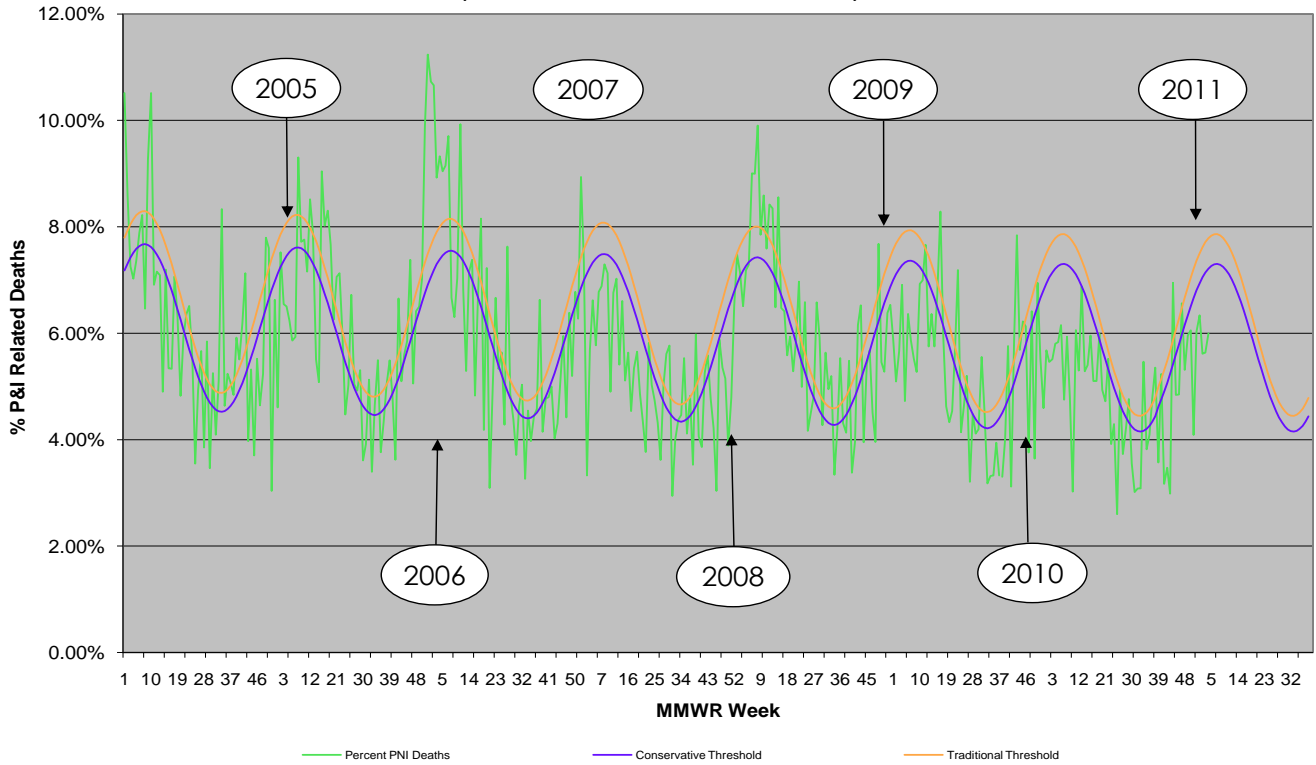
(n=8 facilities) (Source: Biosense)



**Maricopa County 2010-2011  
Pneumonia and Influenza Related Deaths**  
( Source: MCDPH Office of Vital Statistics)

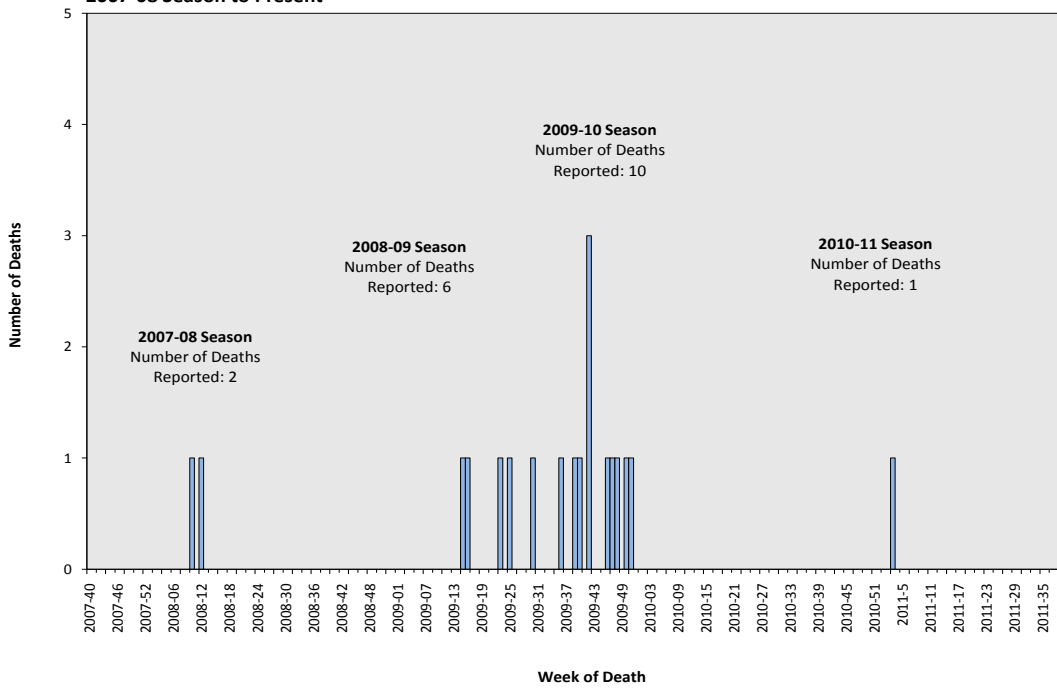


**Maricopa County 2004-2011  
Pneumonia and Influenza Related Deaths**  
( Source: MCDPH Office of Vital Statistics)

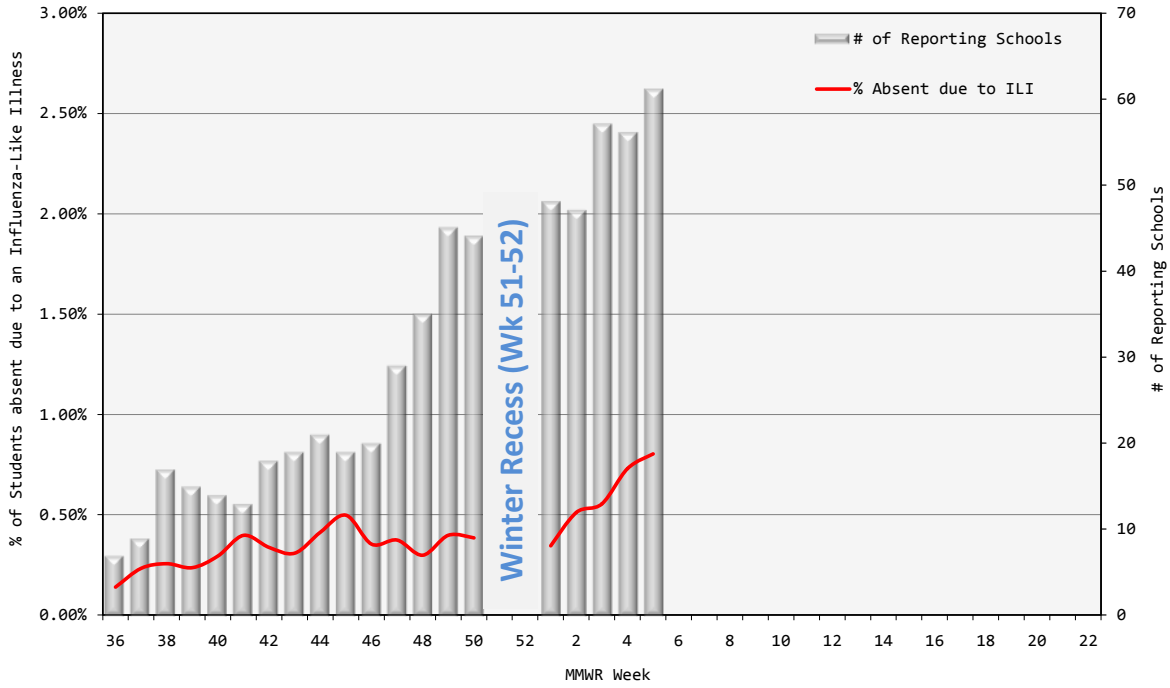




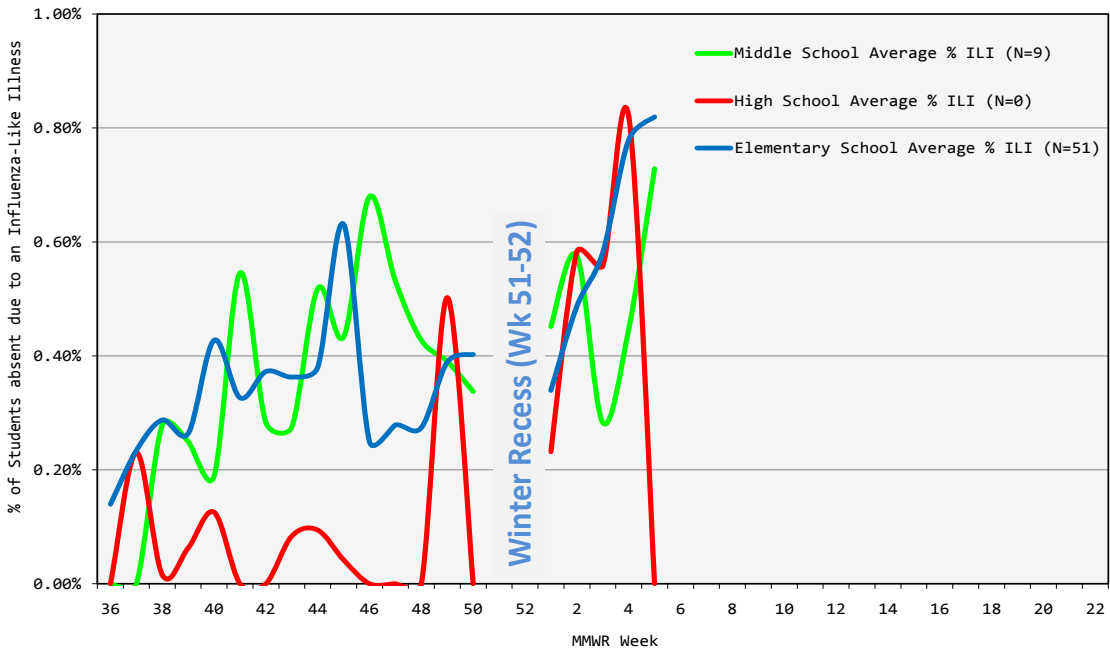
**Number of Pediatric Deaths Associated with Laboratory-Confirmed Influenza by Week of Death:  
2007-08 Season to Present**



Maricopa County 2010-2011:  
School ILI Surveillance by MMWR Week (N=61 Schools) as of 2/4/11



Maricopa County 2010-2011:  
School ILI Surveillance by MMWR Week (N=61 Schools) as of 2/4/11



**Glossary:**

2010-2011 Influenza Season is September 26, 2010 through October 1, 2011. In terms of the surveillance weeks recognized by the Centers for Disease Control, the 2010-11 Season is Week 39 2010 through Week 39 2011.

**Activity Levels:** Indicator of the geographic spread of influenza activity, reported to CDC by all states each week.

**Widespread:** Increased influenza-like illness from sentinel providers (ILI) in three or more regions and large numbers of laboratory-confirmed influenza cases in those regions.

**Regional:** Increased ILI in two regions and elevated numbers of laboratory-confirmed influenza cases in those regions.

**Local:** Increased ILI in one region and elevated numbers of laboratory-confirmed influenza cases in that region.

**Sporadic:** No increase in ILI activity and only isolated laboratory-confirmed influenza cases.

**No Activity:** No increase in ILI activity and no laboratory-confirmed influenza cases.

**Influenza Activity outside Maricopa County**

Information on influenza activity outside Maricopa County is available at these sites:

- [http://azdhs.gov/phs/oids/epi/flu/az\\_flu\\_surv.htm](http://azdhs.gov/phs/oids/epi/flu/az_flu_surv.htm) (Arizona Department of Health Services)
- <http://www.cdc.gov/flu/weekly/fluactivity.htm> (CDC)

Due to wide variability between national- and local-level data, it is not appropriate to apply any national baselines or thresholds to the information presented in this report.

Please email any questions about this report to: [vjollcaberisha@mail.maricopa.gov](mailto:vjollcaberisha@mail.maricopa.gov)

Report generated: 02/04/2011

**Influenza Surveillance Participants include:**

Arizona Department of Health Services

Cigna Health Care Centers

Arizona State University Campus Health Services

Local Hospital Emergency Departments & Infection Control Practitioners

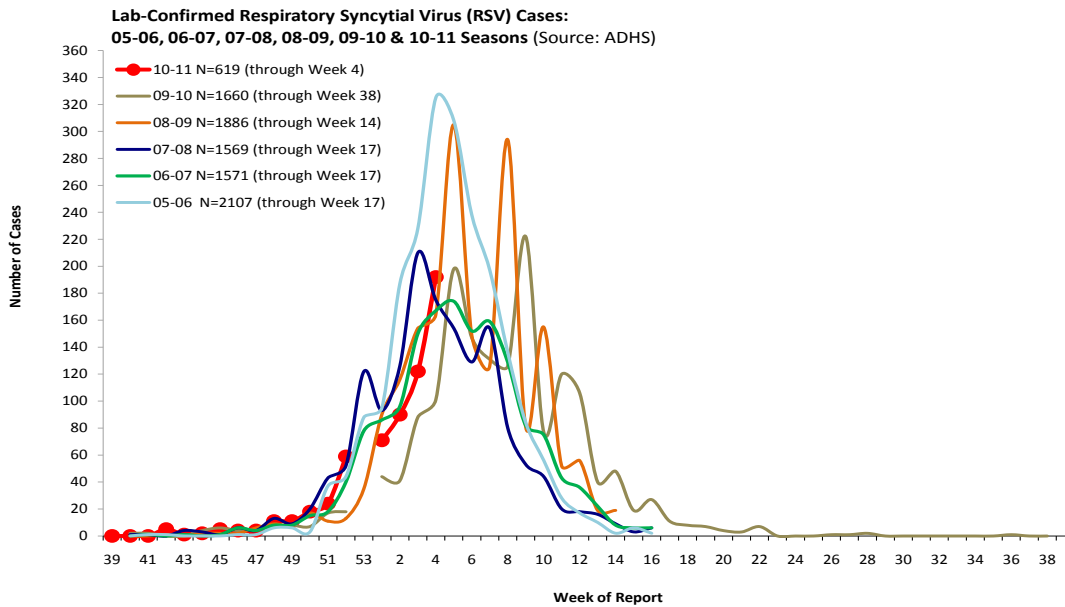
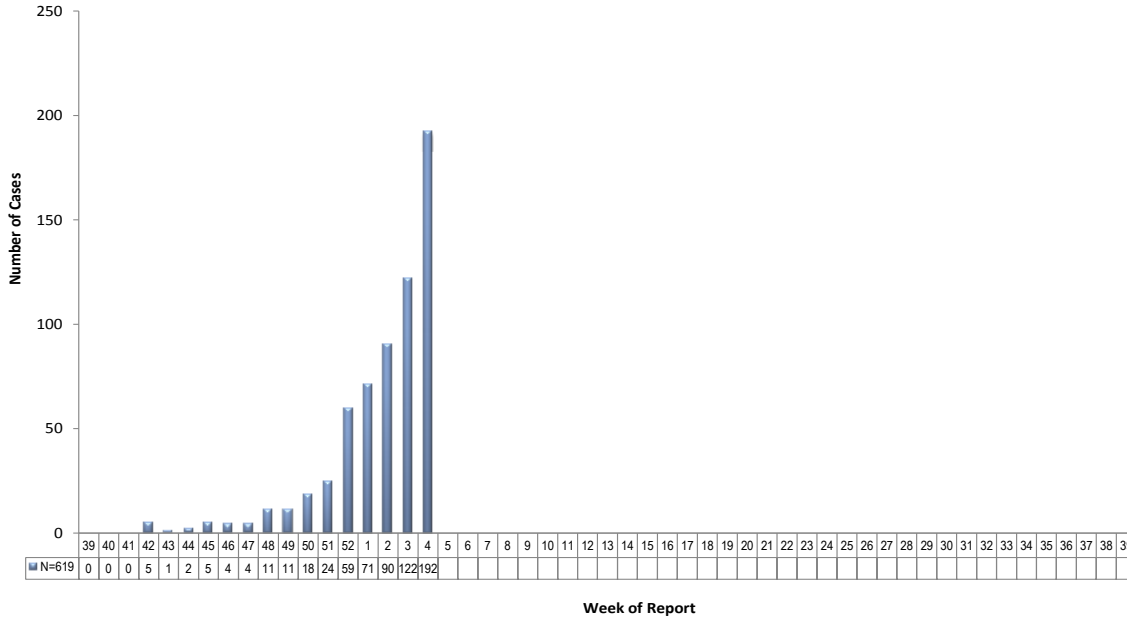
79 Maricopa County Public Schools

# MARICOPA COUNTY RSV SUMMARY UPDATE

## WEEK 4 (1/23/11-1/29/11)

**Respiratory Syncytial Virus (RSV) Lab Surveillance:** At the time of this report, 619 lab-confirmed cases of RSV have been reported through week 4.

**Lab-Confirmed Respiratory Syncytial Virus (RSV) Cases Reported:  
10-11 Season (Source: ADHS)**



\*The 2009-10 and 2010-11 seasons do not contain a week 53.