

MARICOPA COUNTY INFLUENZA SUMMARY and RSV UPDATE
WEEK 6 (2/6/11-2/12/11)

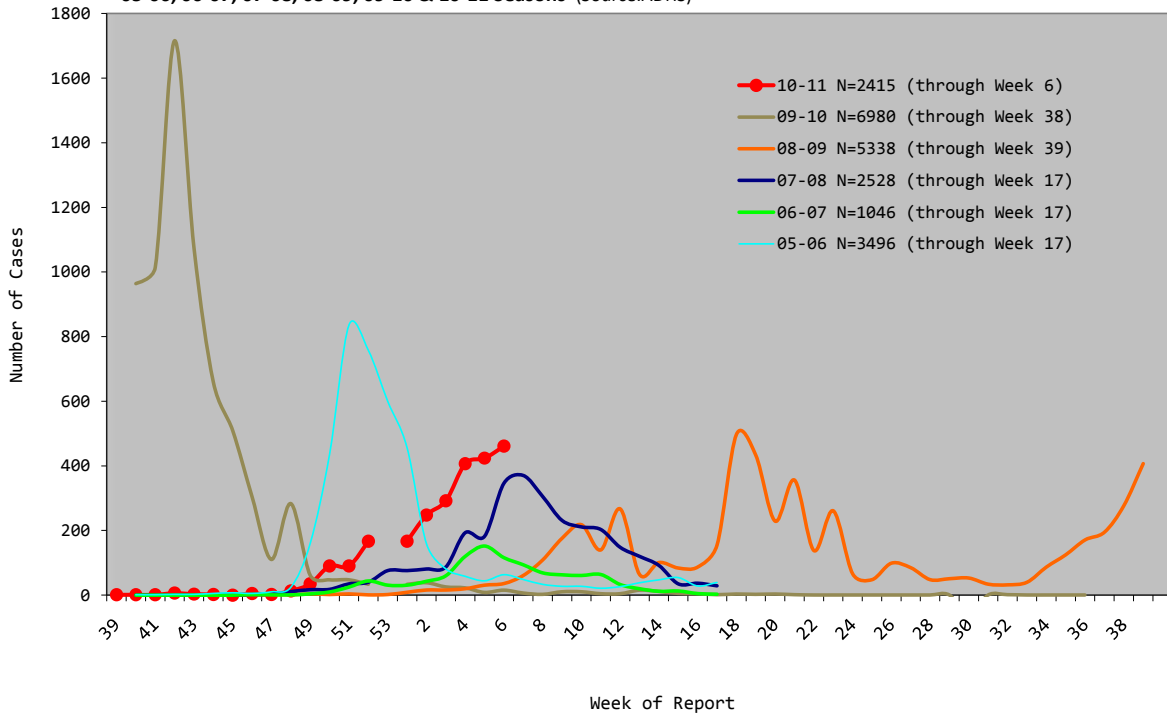
Data contained in this report reflect the time period above except where noted

- **Current Key Findings:** The state of Arizona continues to report widespread activity. Maricopa has a total of 2415 confirmed cases of influenza. Since the beginning of the season this is the week with the largest number of reports. Of all cases reported, 82% are Influenza A, 17% B and 1% are of an unknown type. Influenza A sub-typing is as follows: A/Unknown (1146, 58%), A/H3 (673, 34%), 2009 A/H1N1 (158, 8%).
- **Lab Confirmed Influenza:** Between weeks 5 and 6 of the 2010-2011 season, 461 cases of influenza have been confirmed at laboratories.
- **Pneumonia & Influenza Mortality:** 6.35% of deaths from all causes were due to pneumonia or influenza during week 6.
- **Pediatric Deaths Associated with Laboratory-Confirmed Influenza:** Two pediatric deaths have occurred through week 6 of the 2010-11 season. This time last season 10 pediatric deaths were associated with influenza.
- **Influenza-Like Illness (ILI)** (Through week 6)
 - **Cigna Health Centers** (n=35): 0.32% of visits were due to ILI (provisional data; subject to change as updated information becomes available). **Note: Beginning week 51 of the 2010-11 season, 15 additional facilities were added to the Maricopa County Influenza Surveillance Summary. Added data will influence ILI percentage and number of total visits.*
 - **Hospital Emergency Departments** (n=12): 10.80% of visits were due to ILI. Last week the percentage of hospital emergency department visits due to ILI was 9.67%.
 - **Arizona State University Student Health Services:** 2.21% of visits were due to ILI. Last week, 2.30% of visits were due to ILI.
- **Selected Emergency Department (ED) Visits:** (n=8)
 - 0.65% of all visits were due to ILI. (As of 2/18/2011)
 - 20.90% of all visits were due to a respiratory syndrome. (As of 2/18/2011)
- **School Syndromic Surveillance** (criteria: ≥ 3 days/week of reporting and 50% known absenteeism): 1.11% of students were absent from school due to an influenza-like-illness. (As of 2/18/2011)
- **Respiratory Syncytial virus (RSV):** 183 new cases of RSV have been reported during week 6. Last week, 183 cases were also reported.

Arizona Influenza Activity Levels: (see definitions at <http://www.cdc.gov/flu/weekly/fluactivity.htm>)

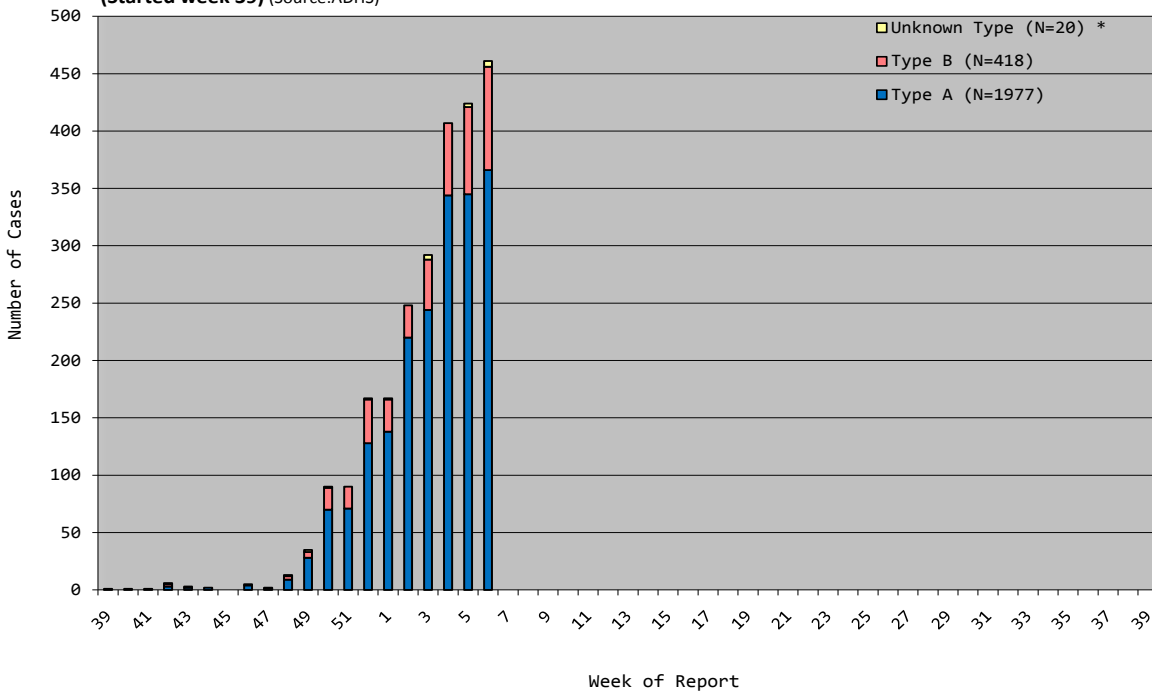
	2010-2011	2009-2010	2008-2009	2007-2008	2006-2007
This Week	Widespread	Sporadic	Widespread	Widespread	Regional
Last Week	Widespread	Sporadic	Regional	Widespread	Regional
Date First Case Confirmed	Sept. 28, 2010	Confirmed during summer	Nov. 19, 2008	Nov. 19, 2007	Nov. 17, 2006
Weeks with Widespread Activity	Week 52-6	Weeks 40 – 48	Weeks 6 – 13 Weeks 17 – 24 Weeks 35 – 39	Weeks 4 – 12	No widespread activity

**Lab-Confirmed Influenza Cases Reported:
05-06, 06-07, 07-08, 08-09, 09-10 & 10-11 Seasons** (Source:ADHS)



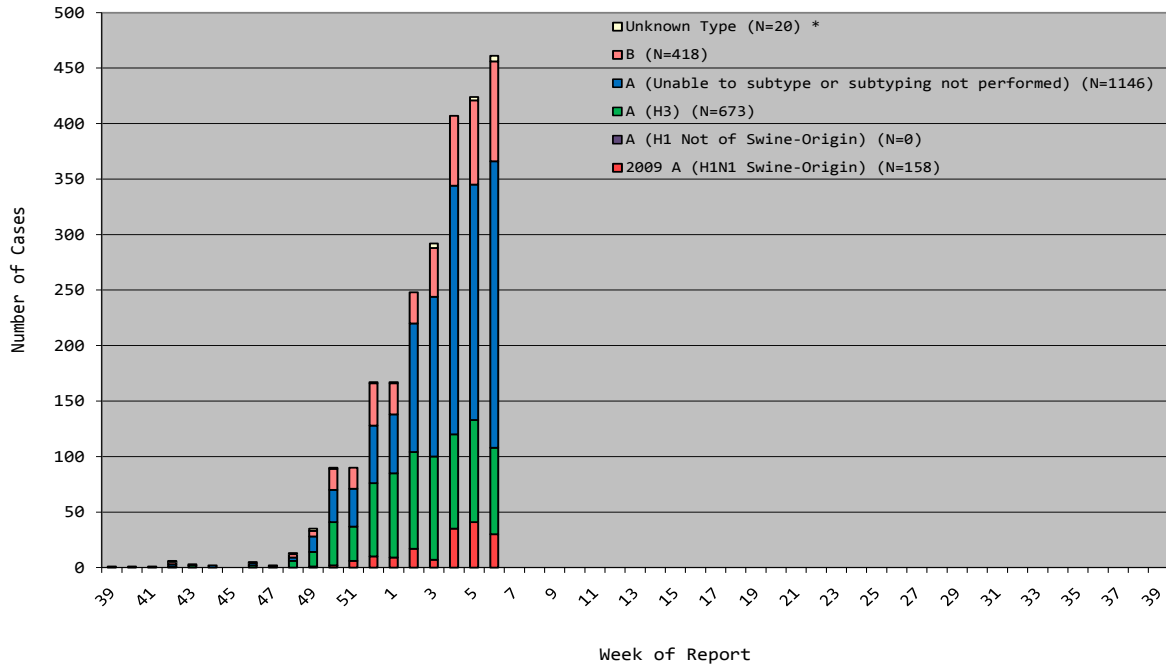
*The 2009-10 and 2010-11 seasons do not contain a week 53.

**Lab-Confirmed Influenza Cases Reported, 10-11 Season
(Started week 39)** (Source:ADHS)



*Sample sizes shown in chart legend represent confirmed influenza cases for the 2010-2011 season only. (Starting week 39)

Lab-Confirmed Influenza Cases Reported, 10-11 Season
(Started week 39) (Source:ADHS)



*Sample sizes shown in chart legend represent confirmed influenza cases for the 2010-2011 season only. (Starting week 39)

Influenza-Like Illness (ILI)* Surveillance

***ILI case definition: fever (at least 100°F) AND cough and/or sore throat.**

- During Week 6, 0.32% of patient visits to Cigna Health Care Centers (data from 35 centers, six departments) were due to ILI. During week 6 of the two previous seasons, 0.03% (09-10) and 0.08% (08-09) of patient visits to Cigna Health Care Centers were due to ILI.

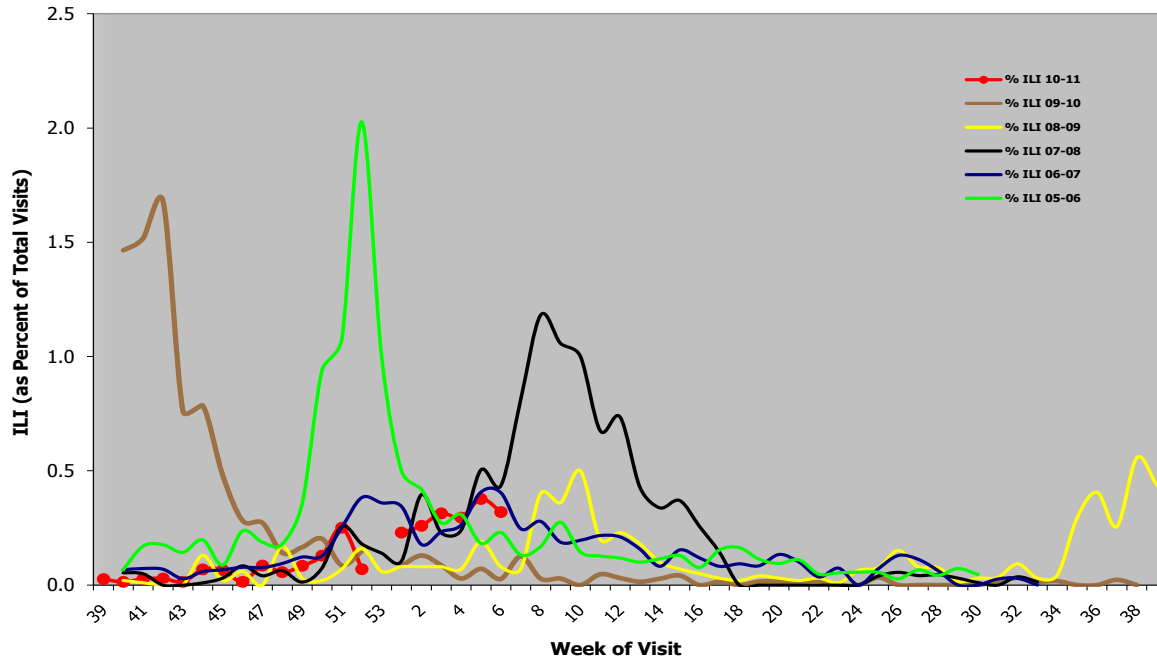
***Provisional data; may change in subsequent reports as updated information becomes available.**

****2009-10 and 2010-11 seasons do not contain a week 53.**

***** Beginning week 51 of the 2010-11 season, 15 new facilities added to Cigna ILI Surveillance.**

- The percentage of Emergency Department visits for ILI was 10.80% for week 6. During week 6 of the two previous seasons, 2.31% (09-10) and 2.09% (08-09) of patient visits were due to ILI.
- Arizona State University Student Health Services had 2.21% of visits due to ILI during week 6.

Cigna Health Care Centers (n=35): ILI Visits as Percentage of Total Visits, 05-06, 06-07, 07-08, 08-09, 09-10 & 10-2011 Seasons* (Source: Cigna Health Care Centers)

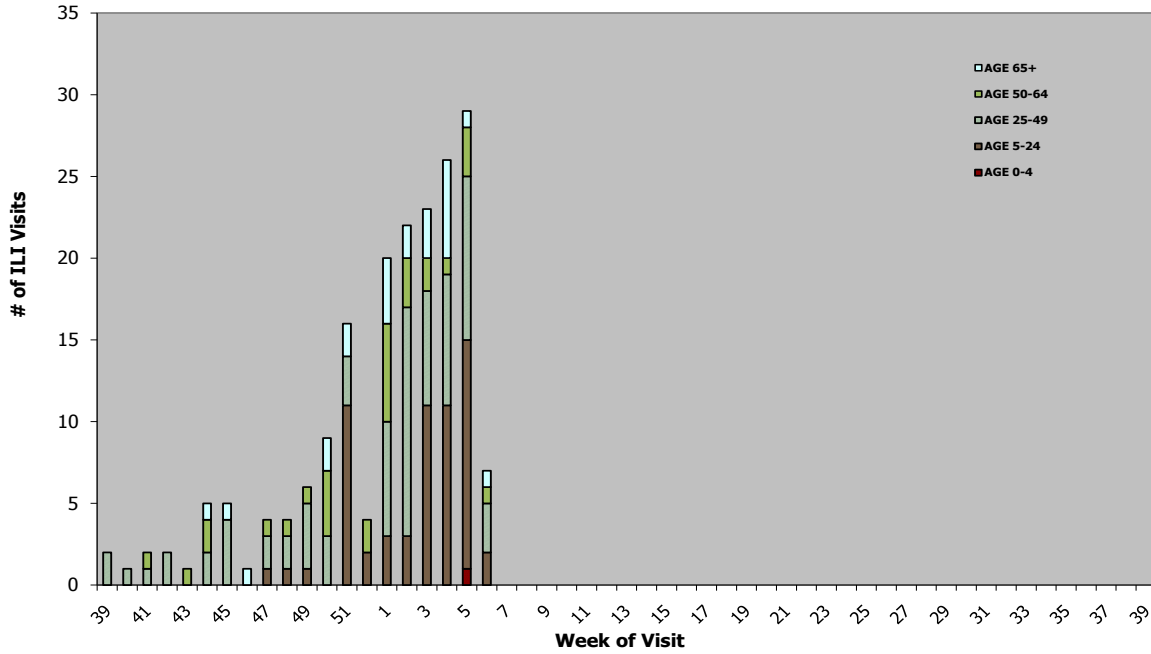


*Data may change in subsequent reports as updated information becomes available.

**The 2009-10 and 2010-11 seasons do not contain a week 53.

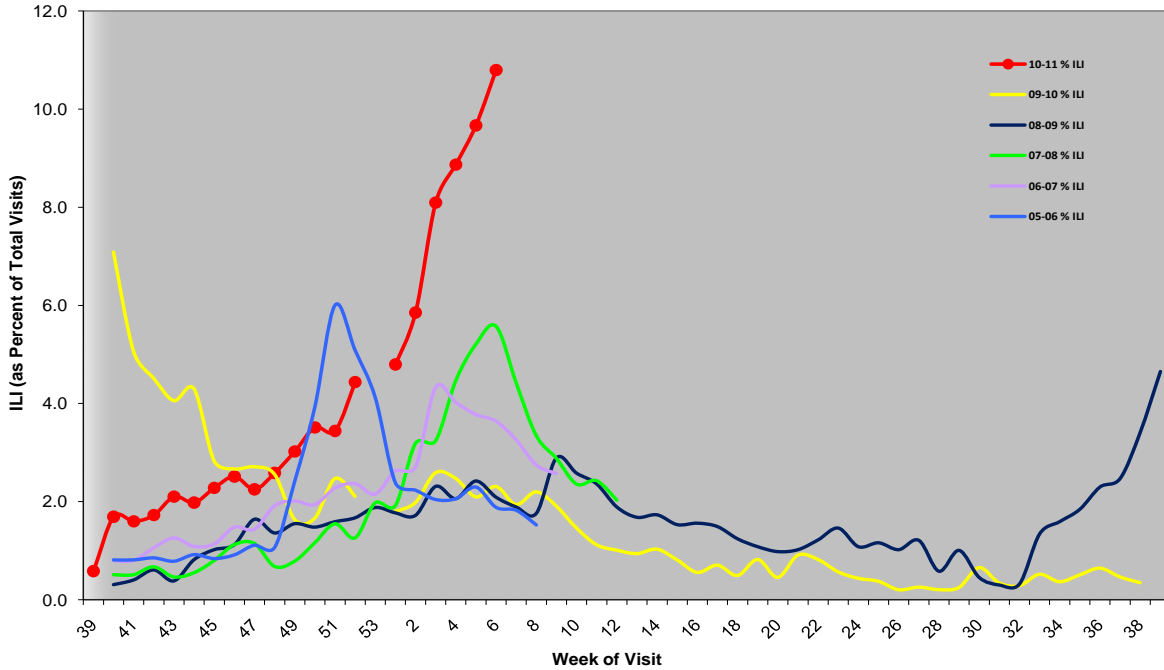
***15 new facilities added week 51, 2010-11 season.

Cigna Health Care Centers (n=35): Number of Visits for Influenza-Like Illness (by age group) 10-11 Season
 (Source: Cigna Health Care Centers)



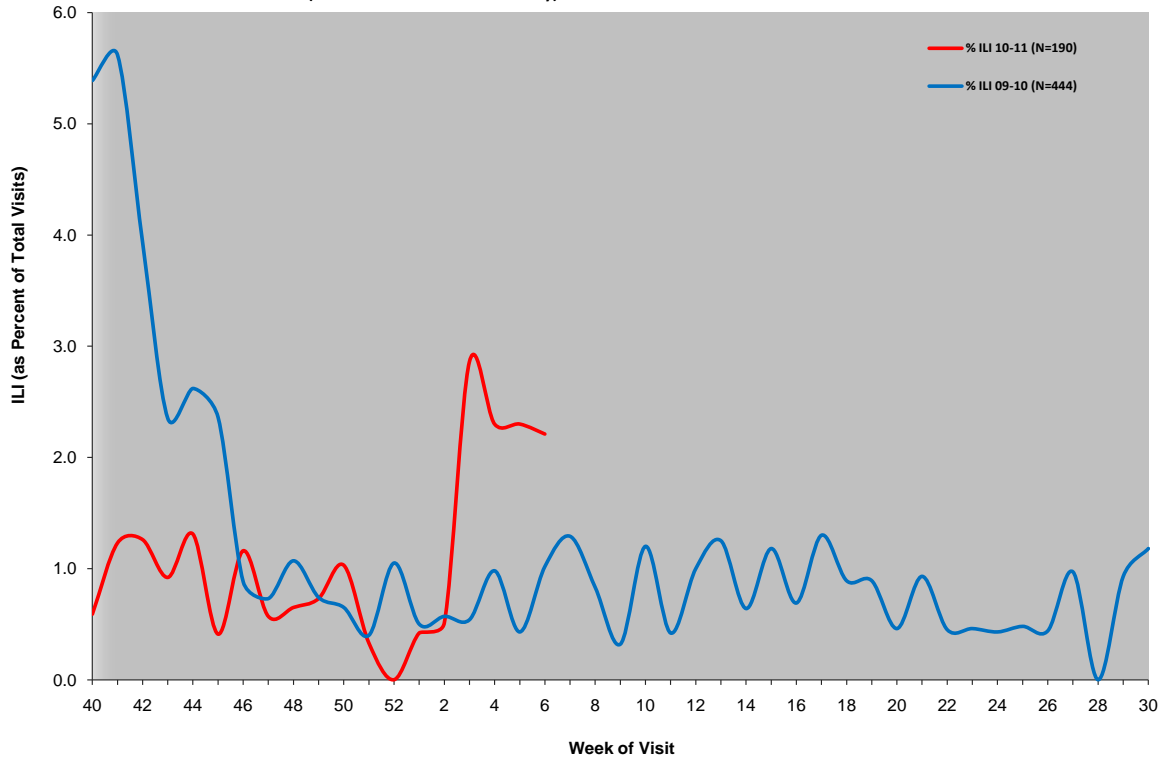
*Data may change in subsequent reports as updated information becomes available.
 ***15 new facilities added week 51, 2010-11 season.

Hospital Emergency Departments (n=12): ILI Visits as Percentage of Total Visits
 05-06, 06-07, 07-08, 08-09, 09-10 & 10-11 Seasons
 (Source: 12 Emergency Departments)

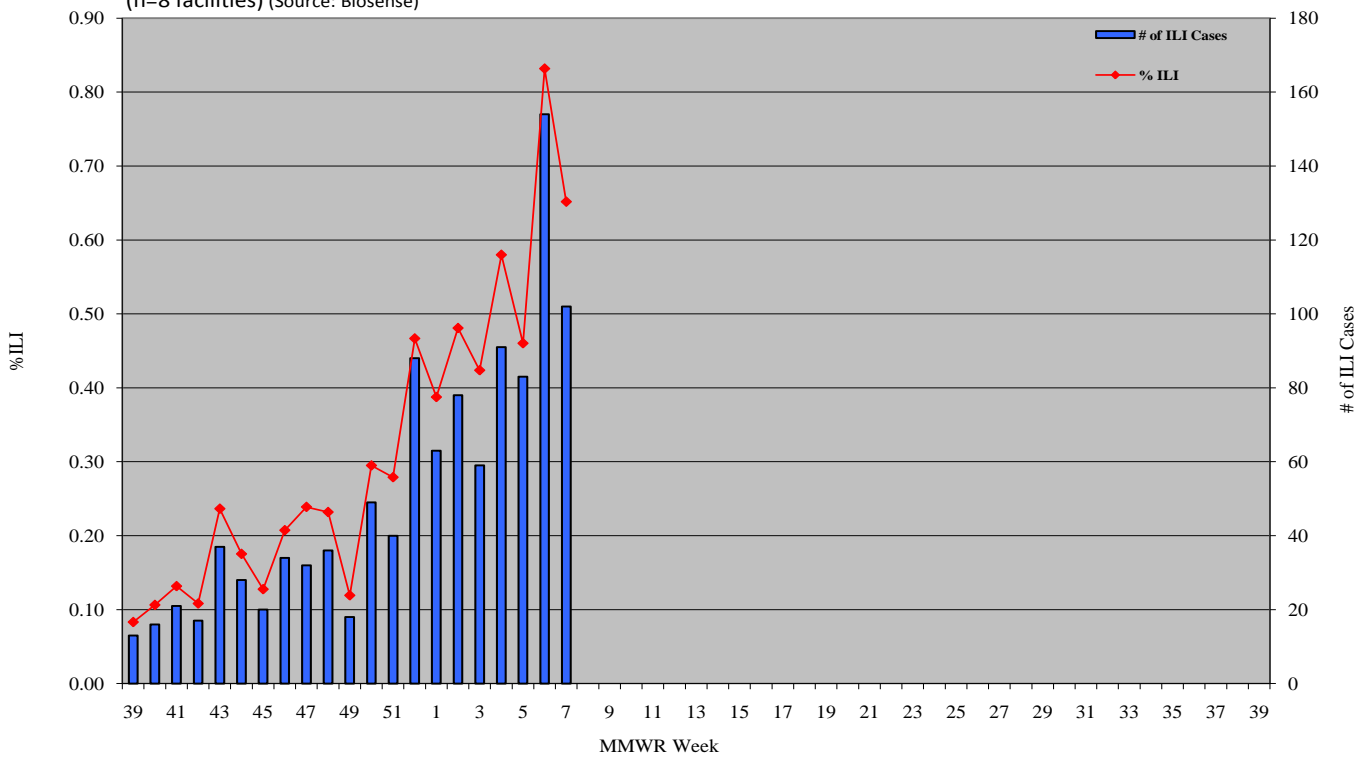


*The 2009-10 and 2010-11 seasons do not contain a week 53.

Arizona State University Student Health Services: ILI Visits as Percentage of Total Visits
 09-10 & 10-2011 Seasons* (Source: Arizona State University)

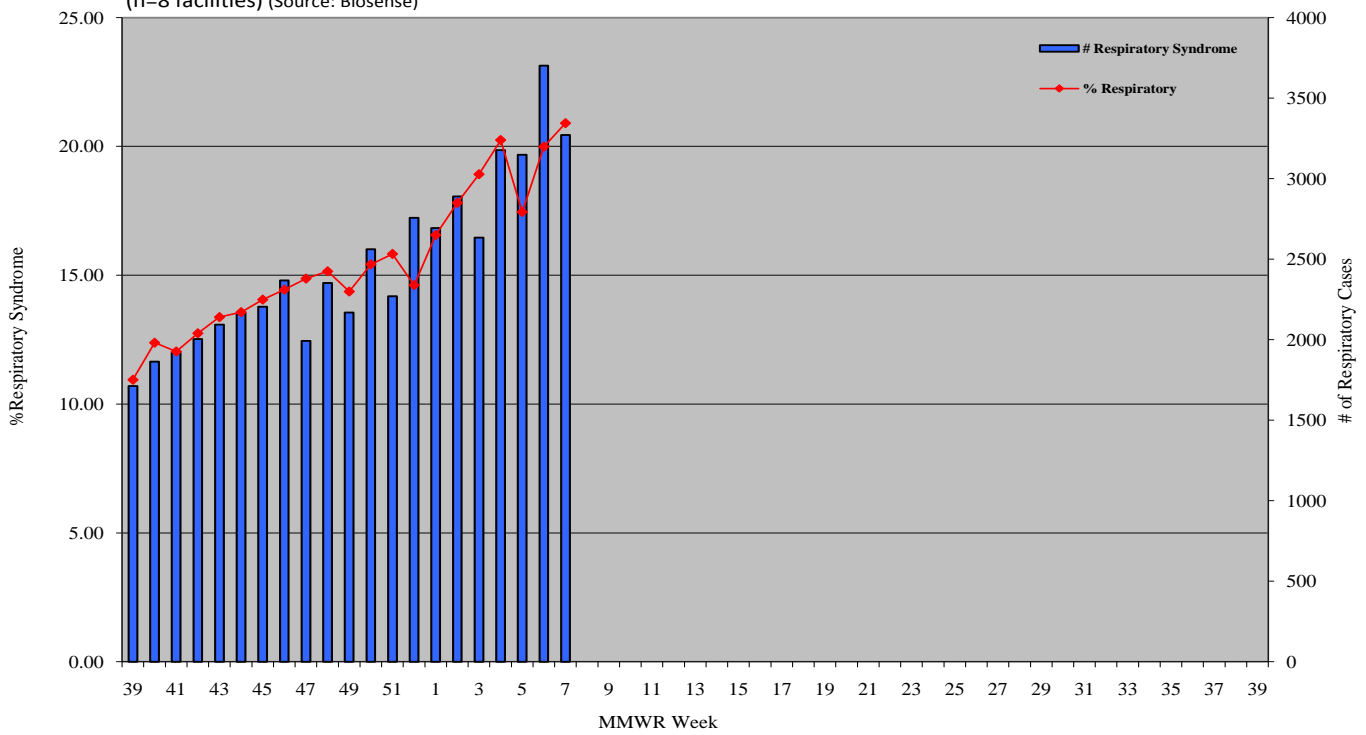


Selected Emergency Departments Weekly Syndromic Surveillance: Influenza-Like-Illness
 (n=8 facilities) (Source: Biosense)



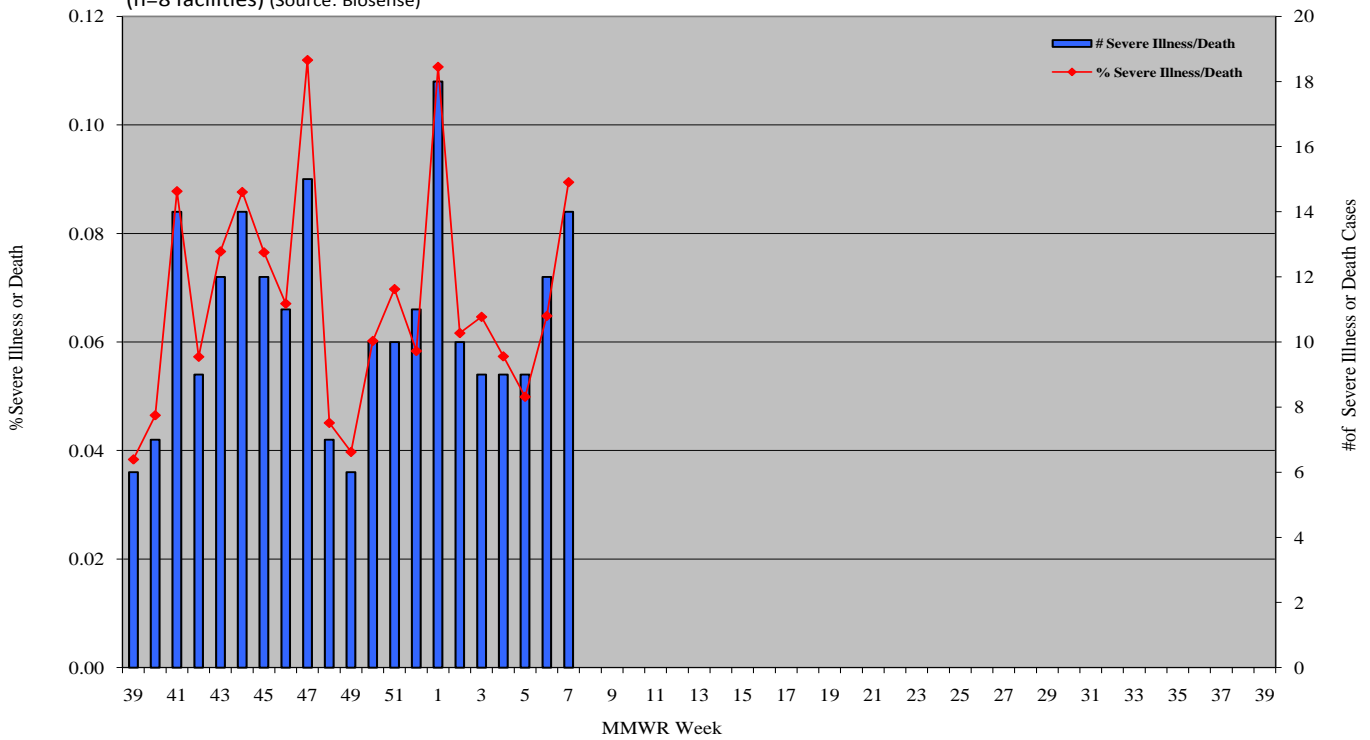
Selected Emergency Departments Weekly Syndromic Surveillance: Respiratory Syndromes

(n=8 facilities) (Source: Biosense)

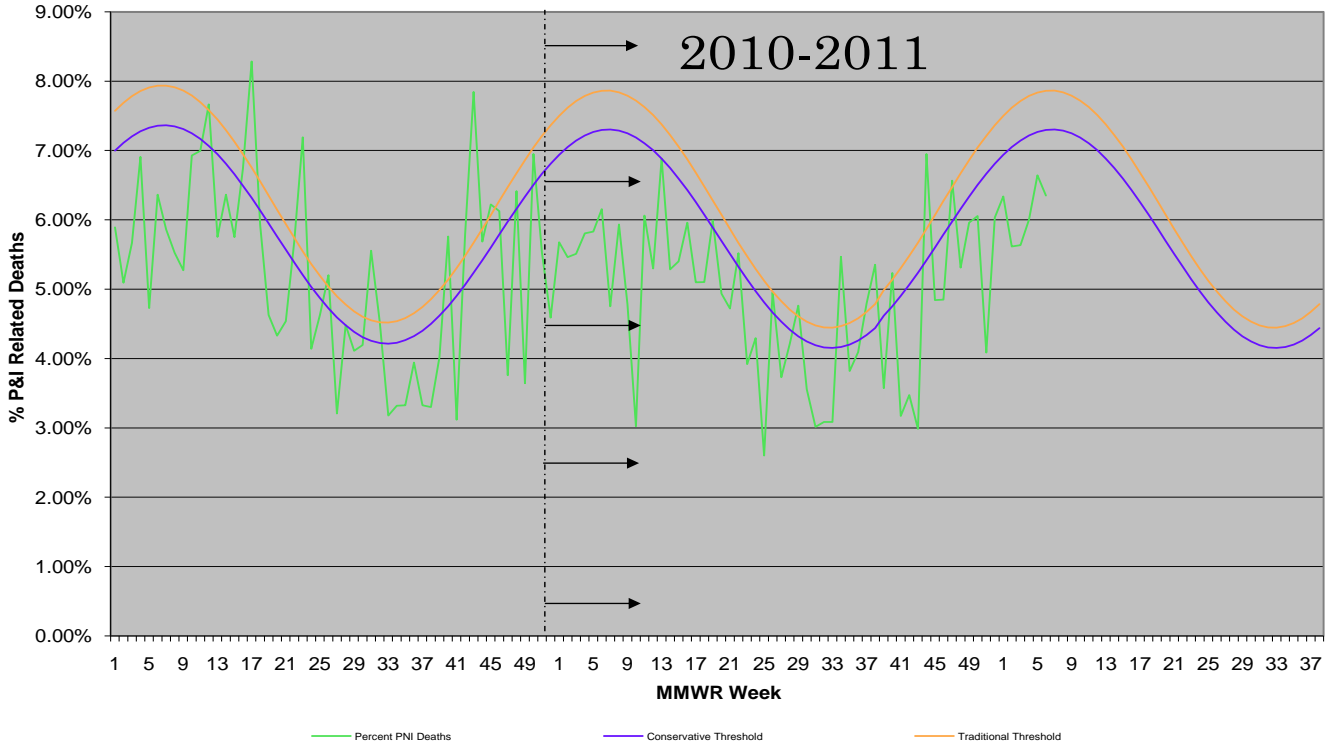


Selected Emergency Departments Weekly Syndromic Surveillance: Severe Illness/Deaths

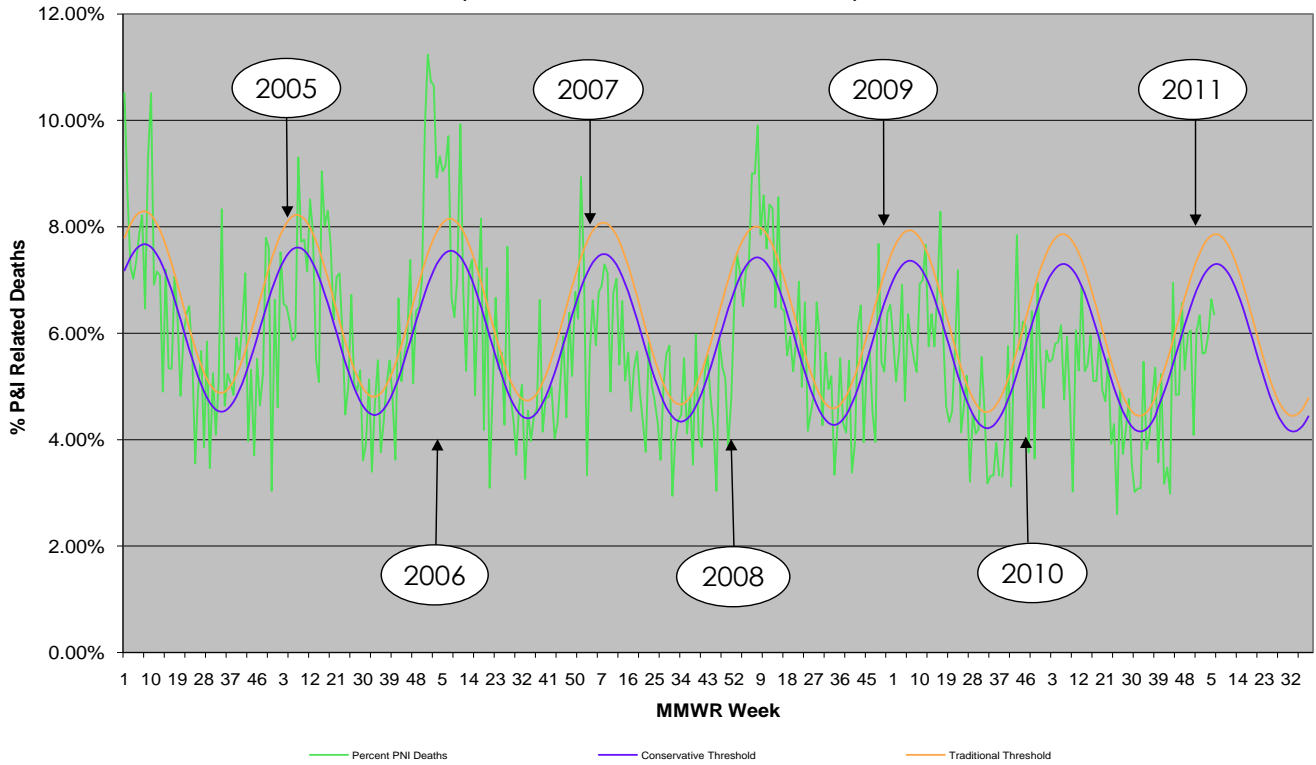
(n=8 facilities) (Source: Biosense)



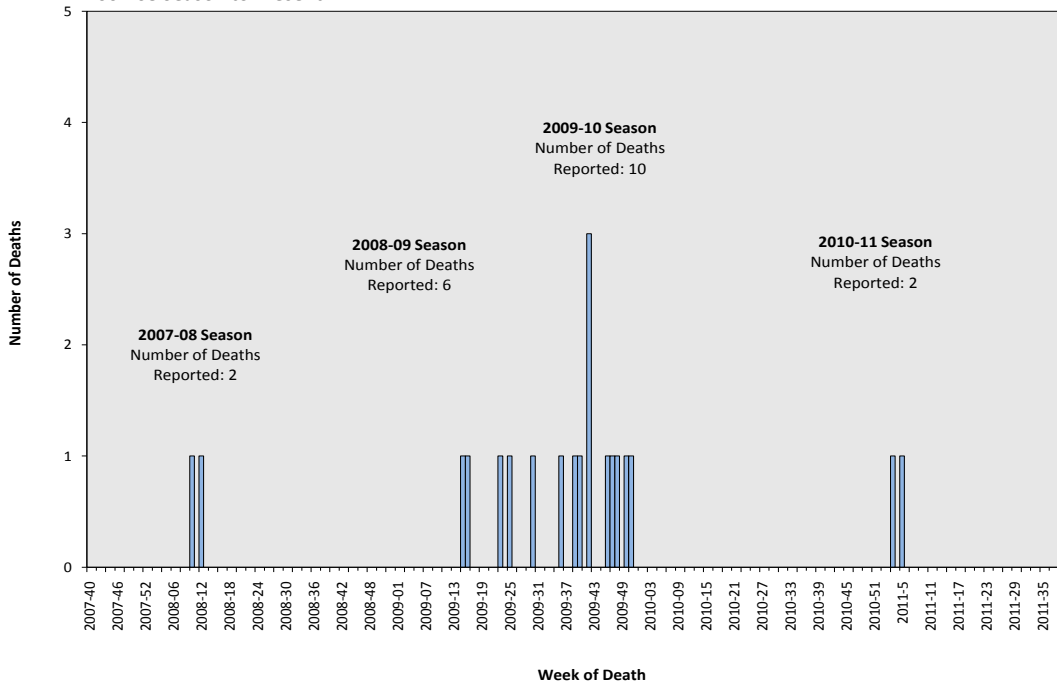
**Maricopa County 2010-2011
Pneumonia and Influenza Related Deaths**
(Source: MCDPH Office of Vital Statistics)



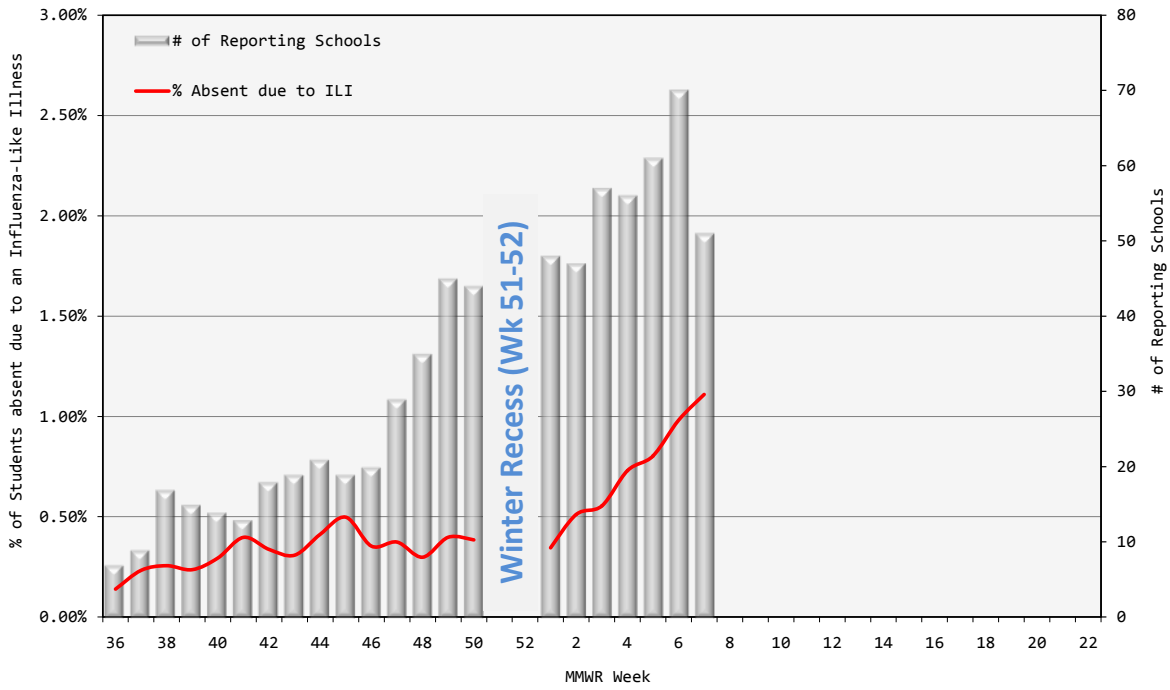
**Maricopa County 2004-2011
Pneumonia and Influenza Related Deaths**
(Source: MCDPH Office of Vital Statistics)



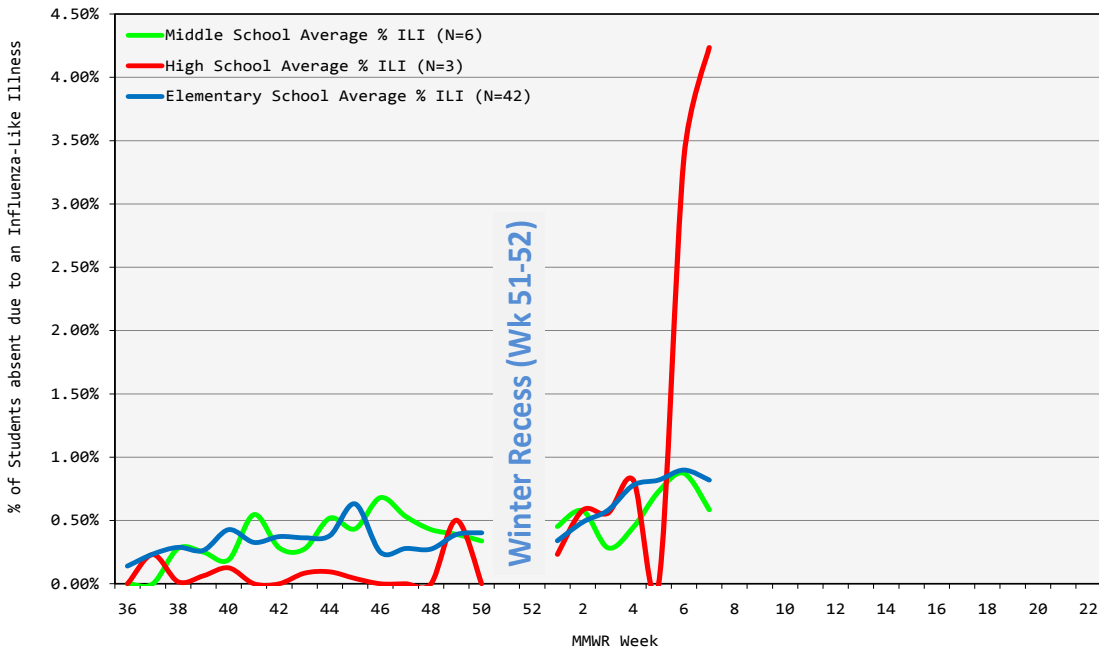
**Number of Pediatric Deaths Associated with Laboratory-Confirmed Influenza by Week of Death:
2007-08 Season to Present**



Maricopa County 2010-2011:
School ILI Surveillance by MMWR Week (N=51 Schools) as of 2/18/11



Maricopa County 2010-2011:
School ILI Surveillance by MMWR Week (N=51 Schools) as of 2/18/11



Glossary:

2010-2011 Influenza Season is September 26, 2010 through October 1, 2011. In terms of the surveillance weeks recognized by the Centers for Disease Control, the 2010-11 Season is Week 39 2010 through Week 39 2011.

Activity Levels: Indicator of the geographic spread of influenza activity, reported to CDC by all states each week.

Widespread: Increased influenza-like illness from sentinel providers (ILI) in three or more regions and large numbers of laboratory-confirmed influenza cases in those regions.

Regional: Increased ILI in two regions and elevated numbers of laboratory-confirmed influenza cases in those regions.

Local: Increased ILI in one region and elevated numbers of laboratory-confirmed influenza cases in that region.

Sporadic: No increase in ILI activity and only isolated laboratory-confirmed influenza cases.

No Activity: No increase in ILI activity and no laboratory-confirmed influenza cases.

Influenza Activity outside Maricopa County

Information on influenza activity outside Maricopa County is available at these sites:

- http://azdhs.gov/phs/oids/epi/flu/az_flu_surv.htm (Arizona Department of Health Services)
- <http://www.cdc.gov/flu/weekly/fluactivity.htm> (CDC)

Due to wide variability between national- and local-level data, it is not appropriate to apply any national baselines or thresholds to the information presented in this report.

Please email any questions about this report to: vjollcaberisha@mail.maricopa.gov

Report generated: 02/18/2011

Influenza Surveillance Participants include:

Arizona Department of Health Services

Cigna Health Care Centers

Arizona State University Campus Health Services

Local Hospital Emergency Departments & Infection Control Practitioners

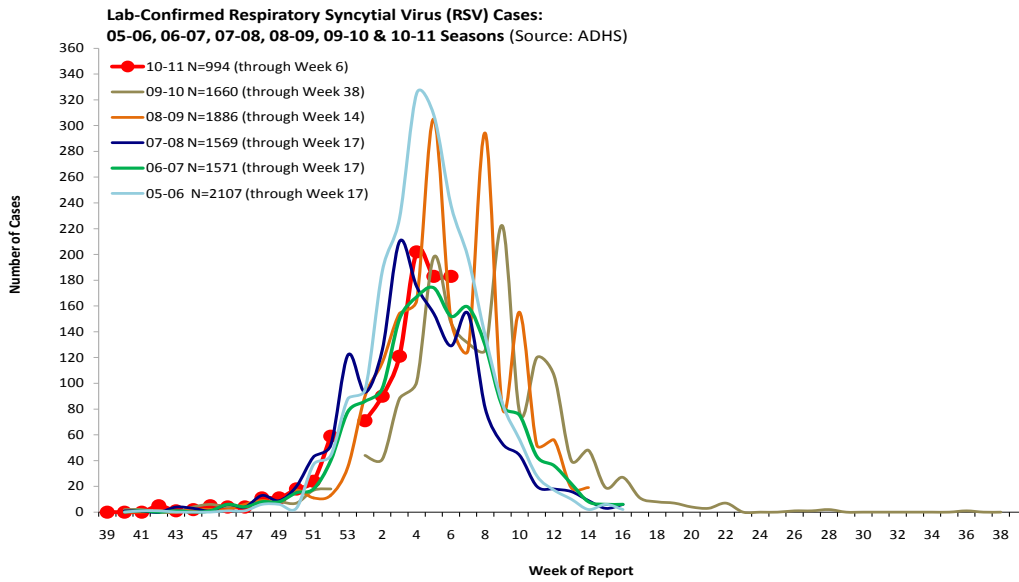
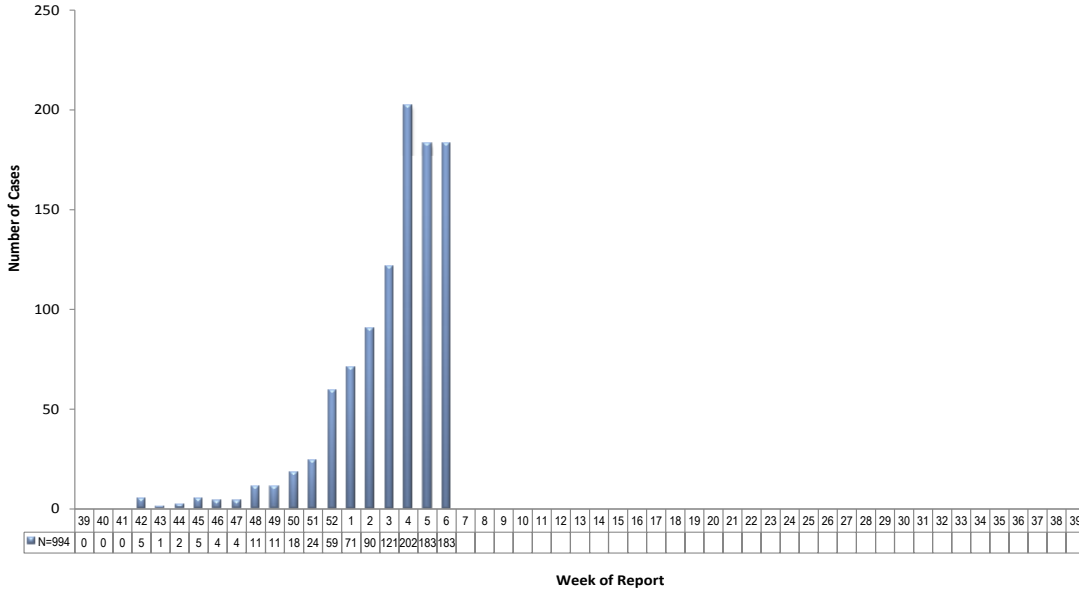
75 Maricopa County Public Schools

MARICOPA COUNTY RSV SUMMARY UPDATE

WEEK 6 (2/6/11-2/12/11)

Respiratory Syncytial Virus (RSV) Lab Surveillance: At the time of this report, 994 lab-confirmed cases of RSV have been reported through week 6.

**Lab-Confirmed Respiratory Syncytial Virus (RSV) Cases Reported:
10-11 Season (Source: ADHS)**



*The 2009-10 and 2010-11 seasons do not contain a week 53.