

MARICOPA COUNTY INFLUENZA SUMMARY and RSV UPDATE
WEEK 50 (12/12/10-12/18/10)

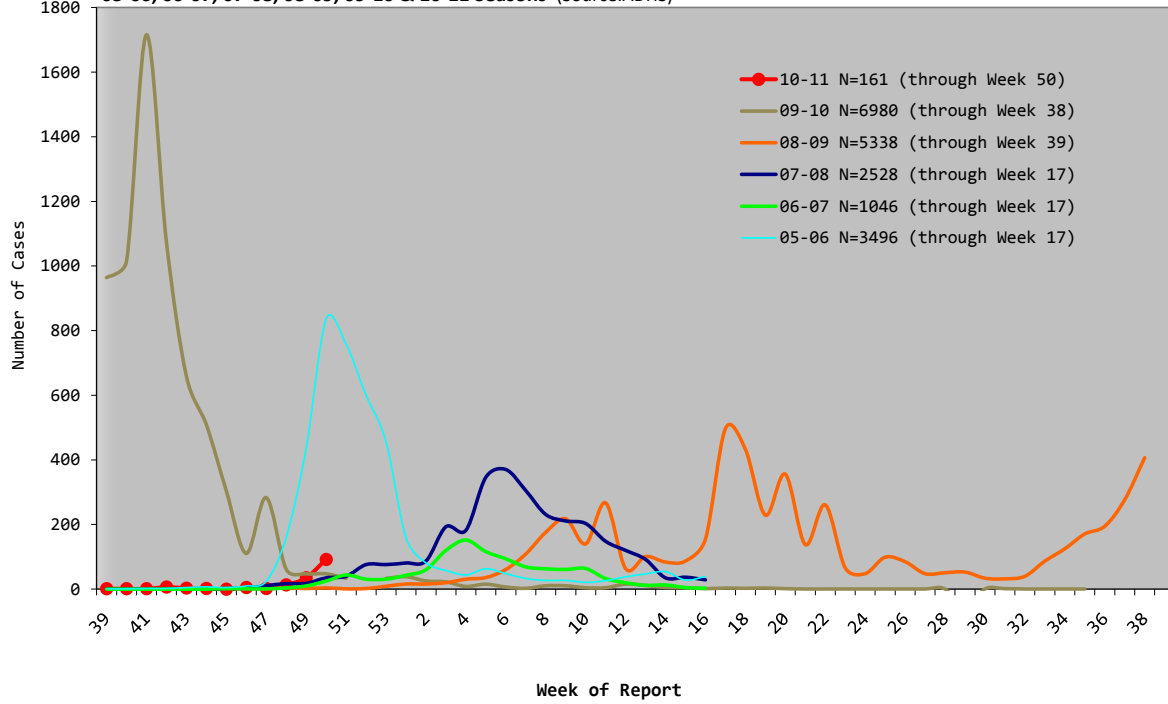
Data contained in this report reflect the time period above except where noted.

- **Current Key Findings:** Maricopa County experienced increasing flu activity in the past week. Maricopa has a total of 161 confirmed cases of influenza. Of these, 76% are Influenza A, 20% B and 4% are of an unknown type. The following subtypes have been reported: A/Unknown (52, 32%), A/H3 (67, 42%), 2009 A/H1N1 (4, 2%), B (32, 20%), and Unknown (6, 4%).
- **Lab Confirmed Influenza:** Between Weeks 49 and 50 of 2010, 92 cases of influenza have been confirmed at laboratories.
- **Pneumonia & Influenza Mortality:** 6.05% of deaths from all causes were due to pneumonia or influenza during week 50.
- **Pediatric Deaths Associated with Laboratory-Confirmed Influenza:** No deaths have occurred in the 2010-11 season.
- **Influenza-Like Illness (ILI)** (Through week 49)
 - **Cigna Health Centers** (n=20): no data available this week (provisional data; subject to change as updated information becomes available).
 - **Hospital Emergency Departments** (n=13): 3.51% of visits were due to ILI. Last week the percentage of hospital emergency department visits due to ILI was 3.02%.
 - **Arizona State University Student Health Services:** no data available this week. Last week 0.73% of visits were due to ILI.
- **Selected Emergency Department (ED) Visits:** (n=8)
 - Less than 1% of all visits were due to ILI. (As of 12/23/2010)
 - 15.37% of all visits were due to a respiratory syndrome. (As of 12/23/2010)
- **School Syndromic Surveillance** (criteria: ≥3 days/week of reporting and 50% known absenteeism): Winter recess, no data available for week 51.
- **Respiratory Syncytial Virus (RSV):** Thirteen new cases of RSV have been reported during week 50. Last week, 11 cases were reported.

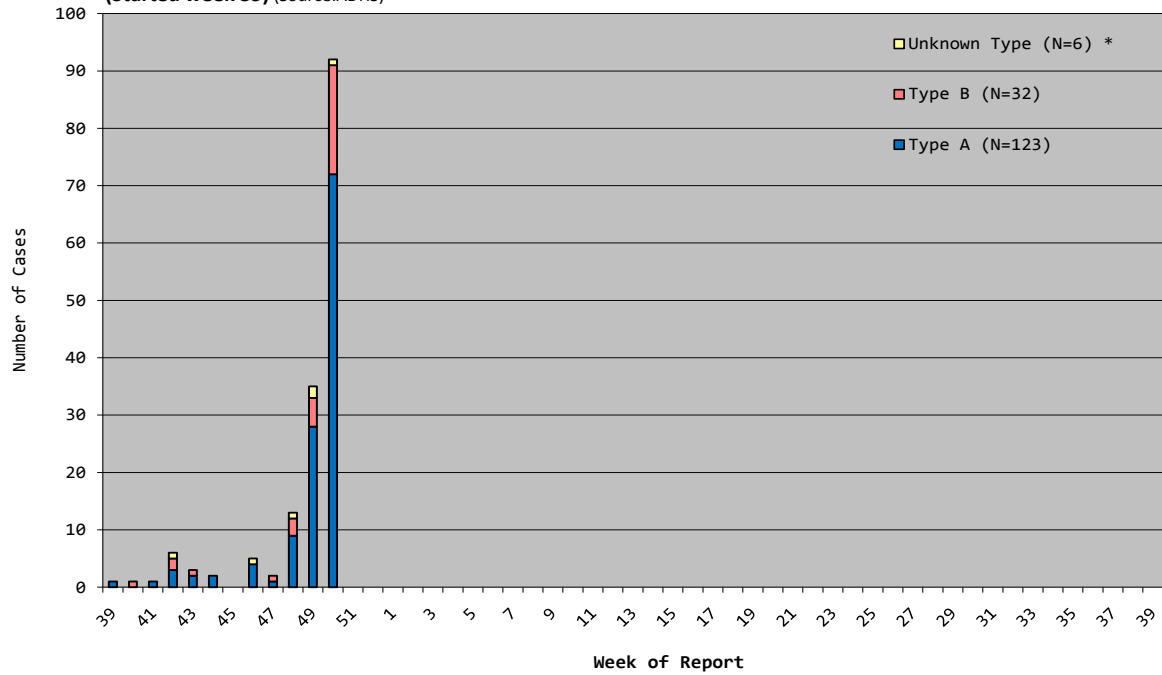
Arizona Influenza Activity Levels: (see definitions at <http://www.cdc.gov/flu/weekly/fluactivity.htm>)

	2010-2011	2009-2010	2008-2009	2007-2008	2006-2007
This Week	Regional	Regional	Sporadic	Local	Sporadic
Last Week	Local	Regional	Sporadic	Sporadic	Sporadic
Date First Case Confirmed	Sept. 28, 2010	Confirmed during summer	Nov. 19, 2008	Nov. 19, 2007	Nov. 17, 2006
Weeks with Widespread Activity	-	Weeks 40 – 48	Weeks 6 – 13 Weeks 17 – 24 Weeks 35 – 39	Weeks 4 – 12	No widespread activity

Lab-Confirmed Influenza Cases Reported:
05-06, 06-07, 07-08, 08-09, 09-10 & 10-11 Seasons (Source:ADHS)

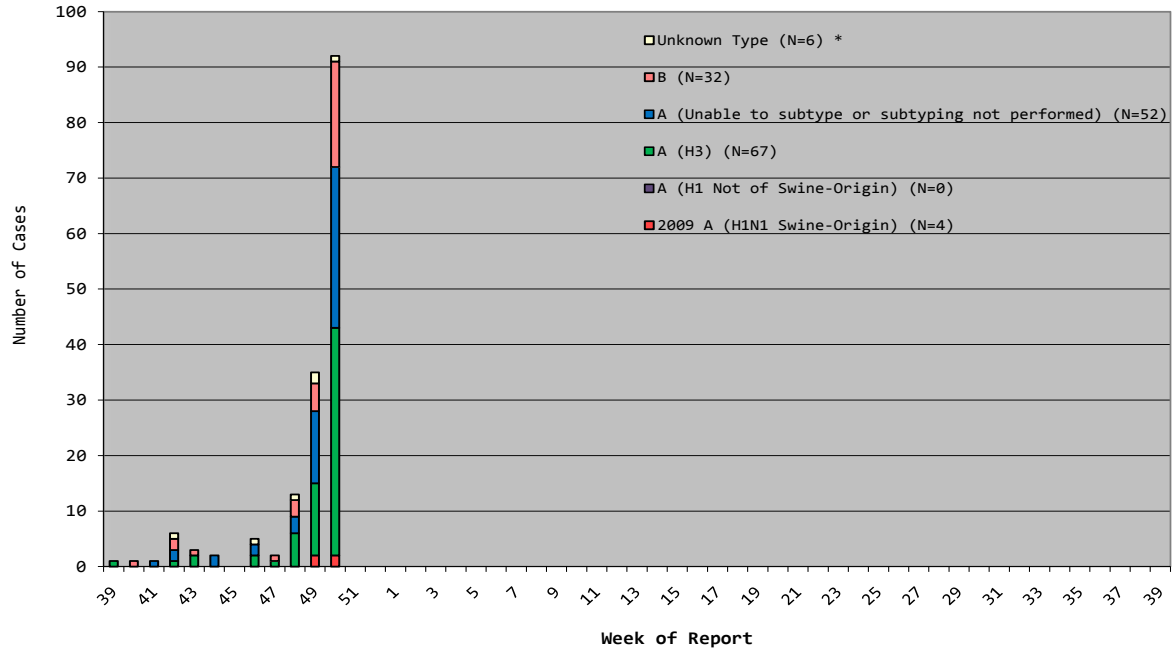


Lab-Confirmed Influenza Cases Reported, 10-11 Season
(Started week 39) (Source:ADHS)



*Sample sizes shown in chart legend represent confirmed influenza cases for the 2010-2011 season only. (Starting week 39)

**Lab-Confirmed Influenza Cases Reported, 10-11 Season
(Started week 39)** (Source:ADHS)

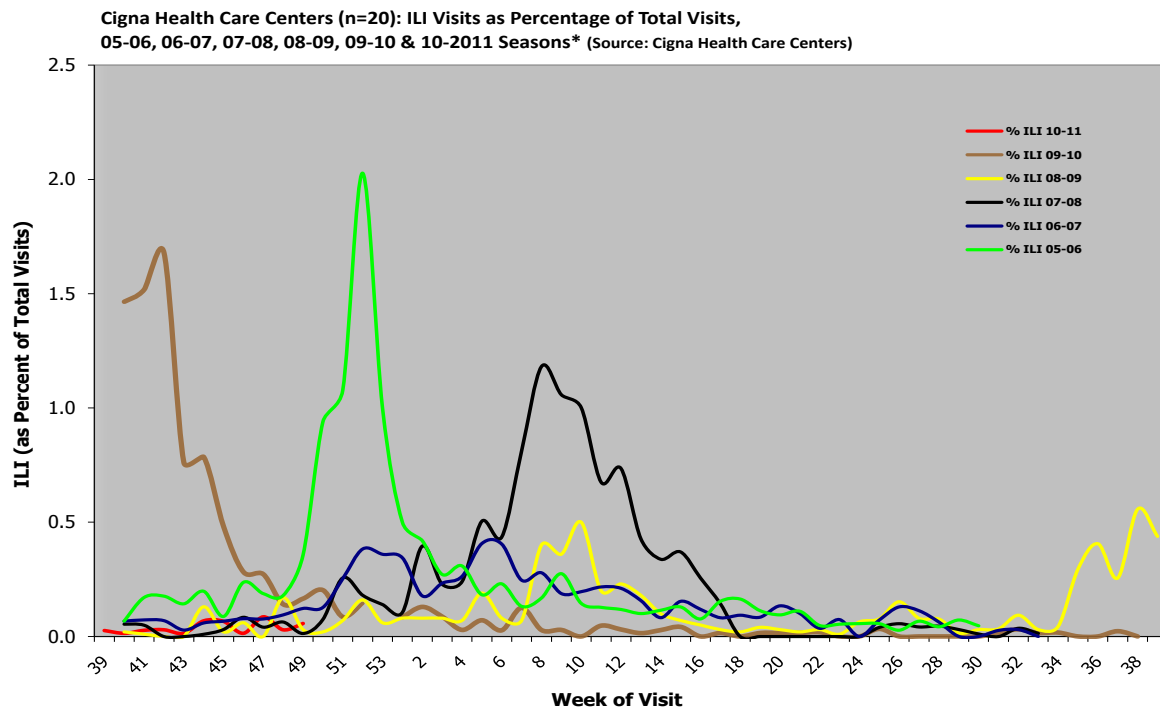


*Sample sizes shown in chart legend represent confirmed influenza cases for the 2010-2011 season only. (Starting week 39)

Influenza-Like Illness (ILI)* Surveillance

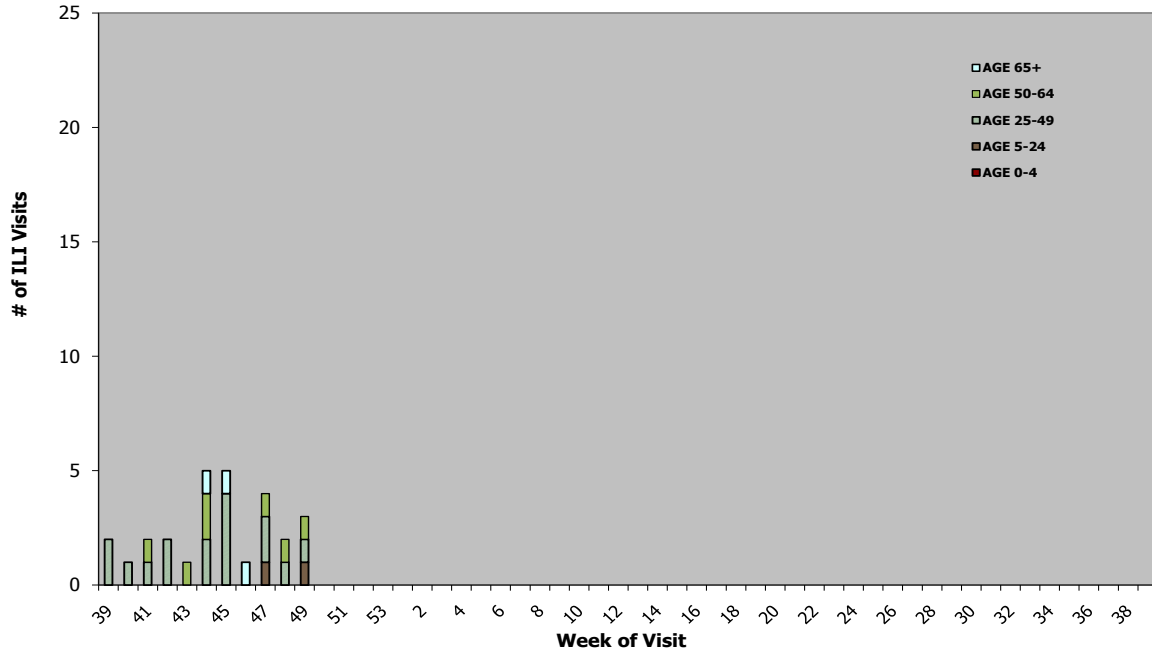
***ILI case definition: fever (at least 100°F) AND cough and/or sore throat.**

- During Week 50, data was not available on patient visits to Cigna Health Care Centers (data from 20 centers, six departments) due to ILI. During Week 50 of the two previous seasons, 0.20% (09-10) and 0.02% (08-09) of patient visits to Cigna Health Care Centers were due to ILI. (*Provisional data; may change in subsequent reports as updated information becomes available.)
- The percentage of Emergency Department visits for ILI was 3.51% for Week 50. During Week 50 of the two previous seasons, 1.67% (09-10) and 1.48% (08-09) of patient visits were due to ILI.
- Data was unavailable for Arizona State University Student Health Services during Week 50.



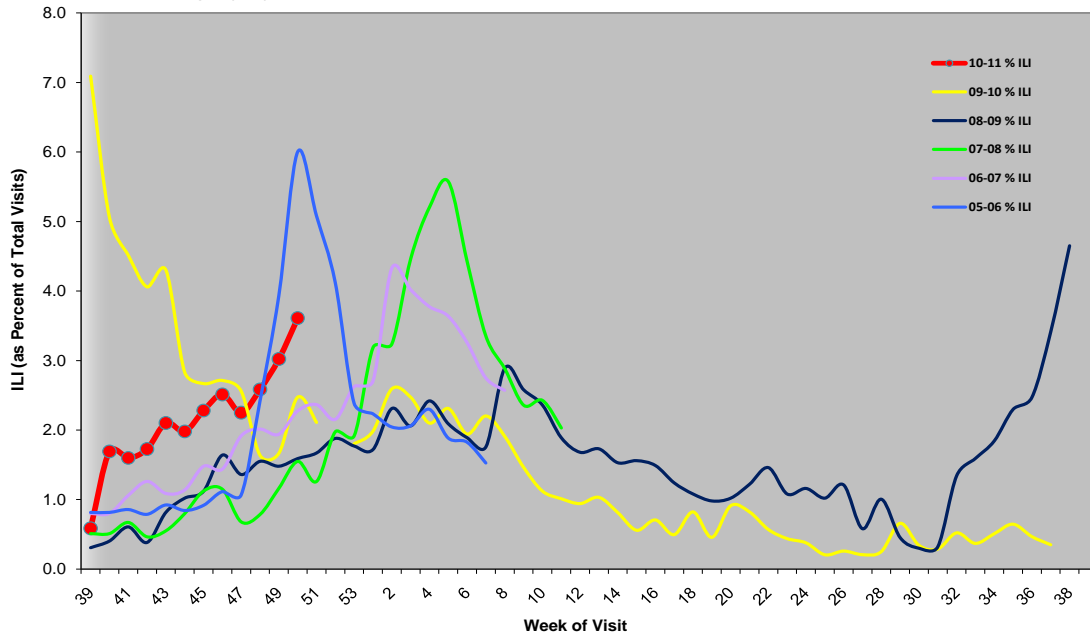
*Data may change in subsequent reports as updated information becomes available.

Cigna Health Care Centers (n=20): Number of Visits for Influenza-Like Illness (by age group) 10-11 Season
 (Source: Cigna Health Care Centers)

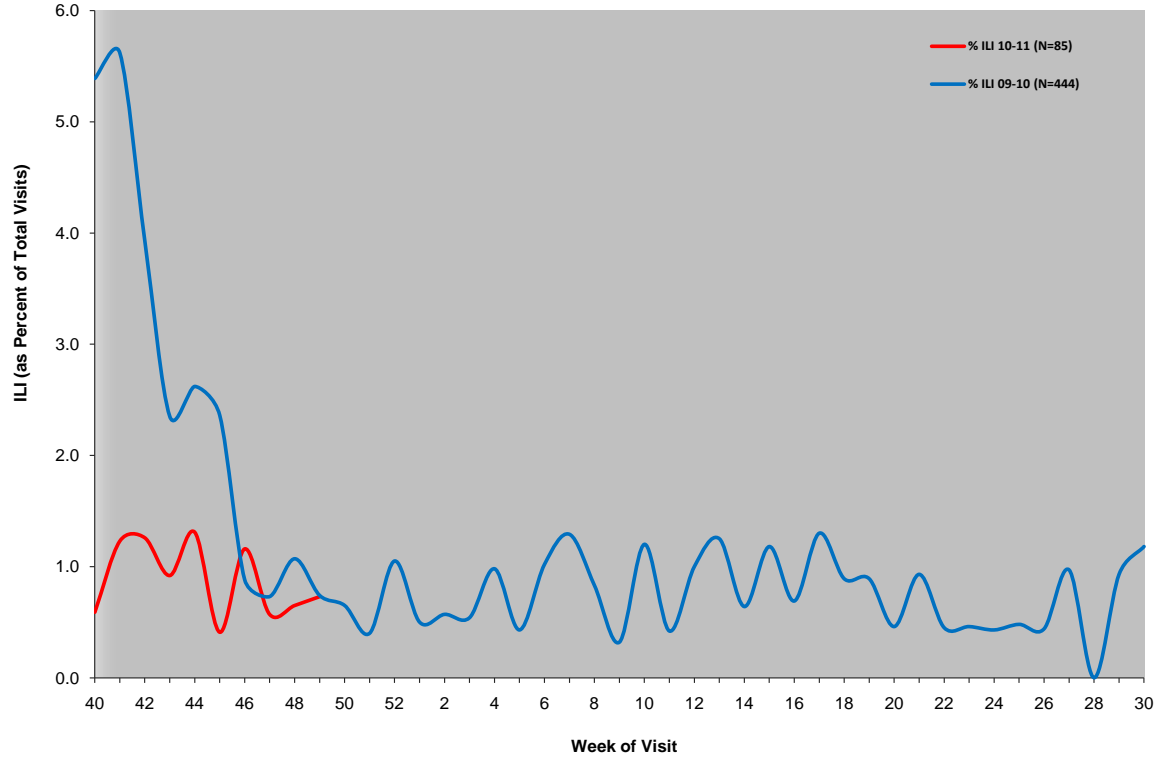


*Data may change in subsequent reports as updated information becomes available.

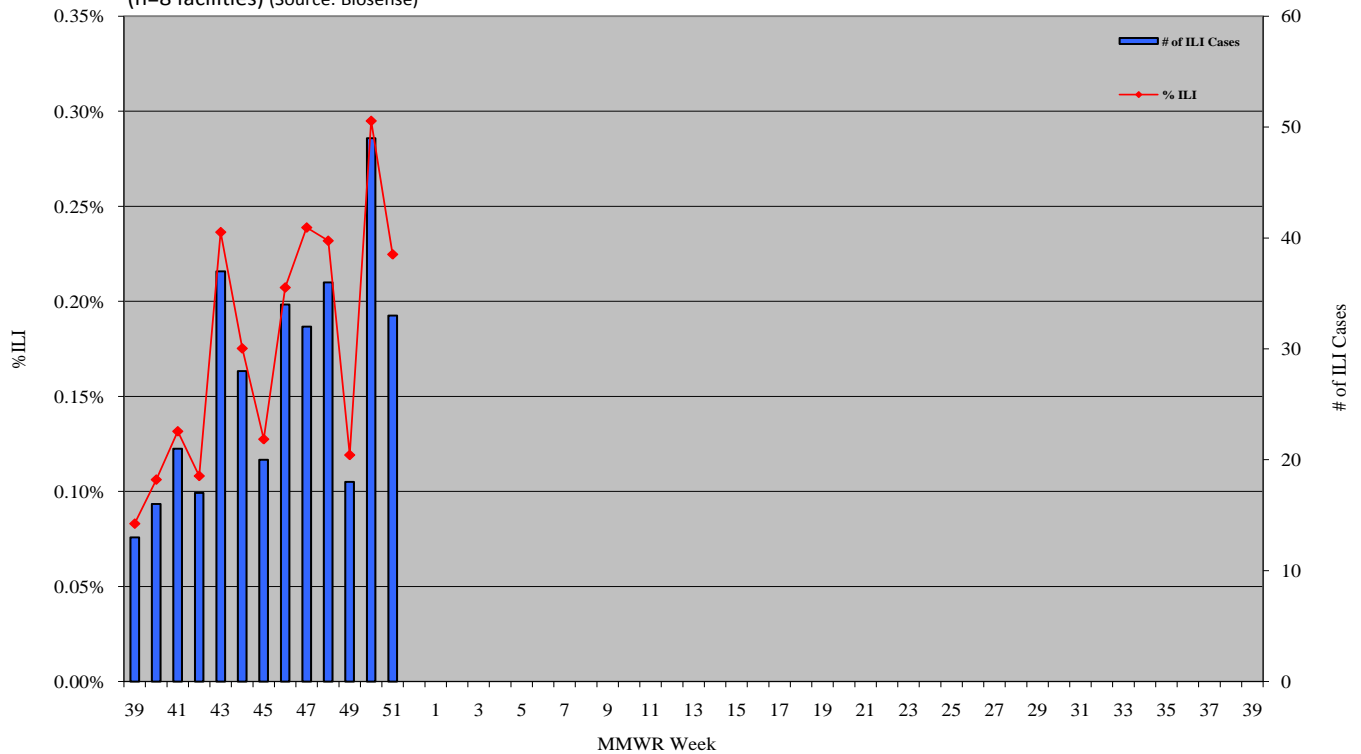
Hospital Emergency Departments (n=16): ILI Visits as Percentage of Total Visits
 05-06, 06-07, 07-08, 08-09, 09-10 & 10-11 Seasons
 (Source: 16 Emergency Departments)



Arizona State University Student Health Services: ILI Visits as Percentage of Total Visits
09-10 & 10-2011 Seasons* (Source: Arizona State University)

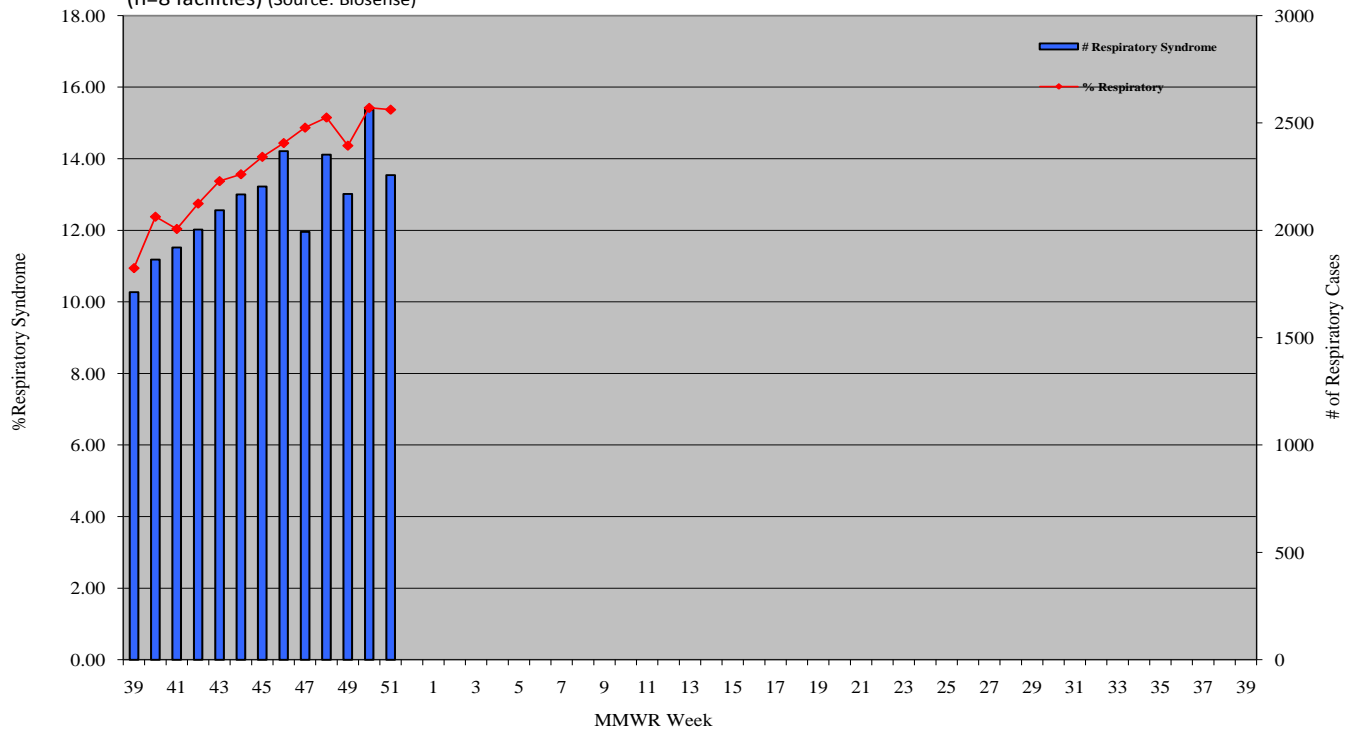


Selected Emergency Departments Weekly Syndromic Surveillance: Influenza-Like-Illness
(n=8 facilities) (Source: Biosense)



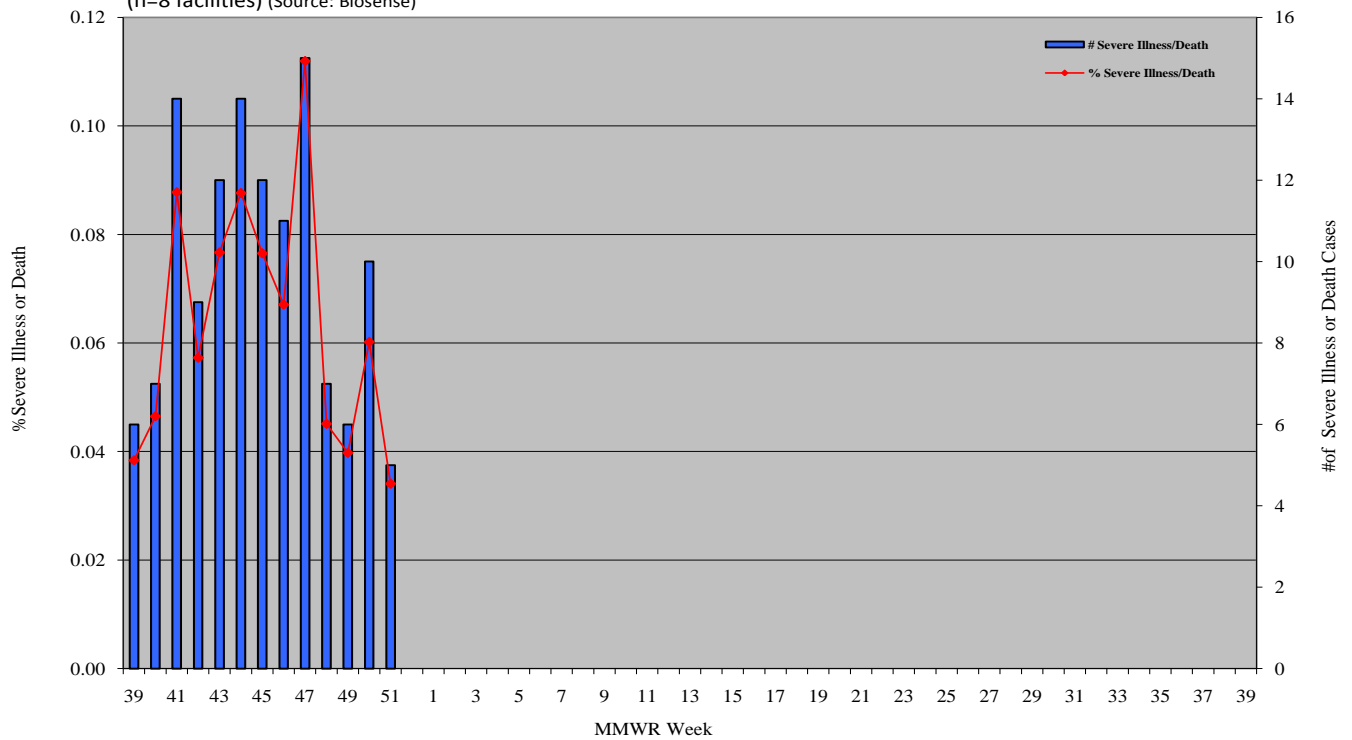
Selected Emergency Departments Weekly Syndromic Surveillance: Respiratory Syndromes

(n=8 facilities) (Source: Biosense)

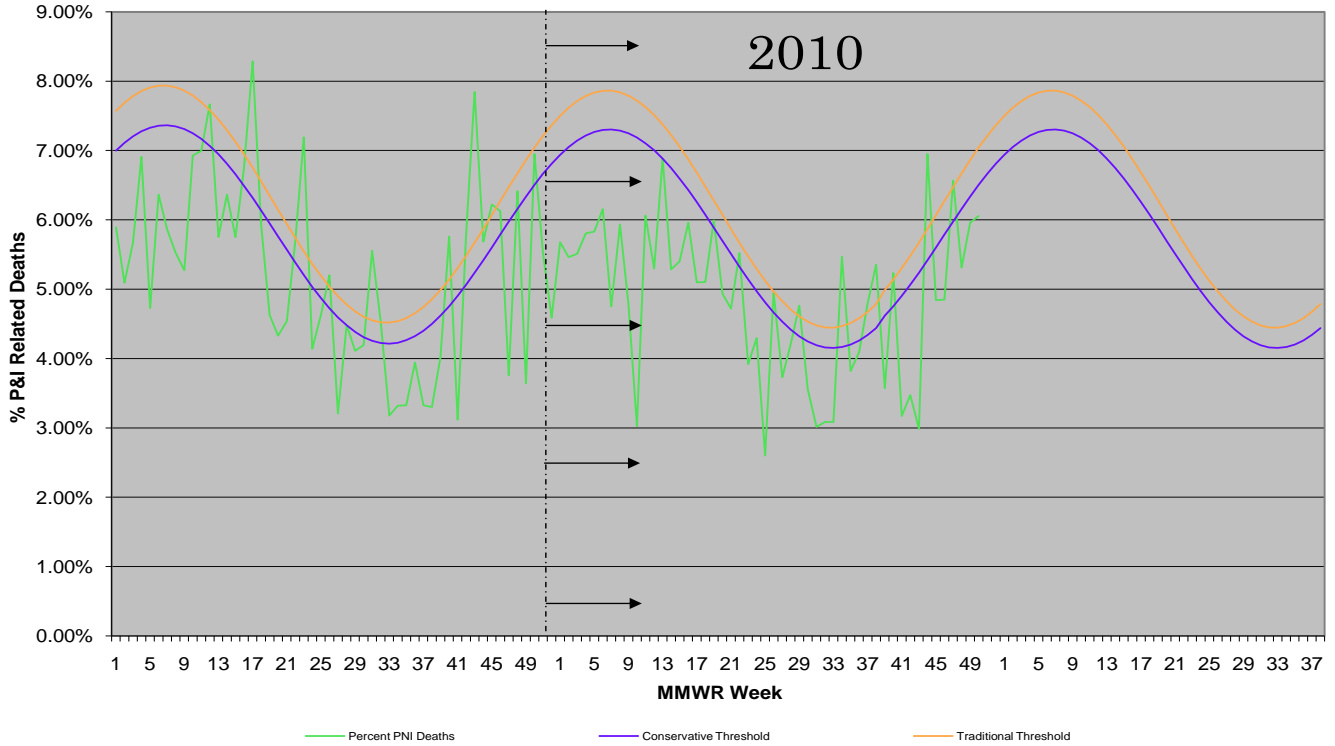


Selected Emergency Departments Weekly Syndromic Surveillance: Severe Illness/Deaths

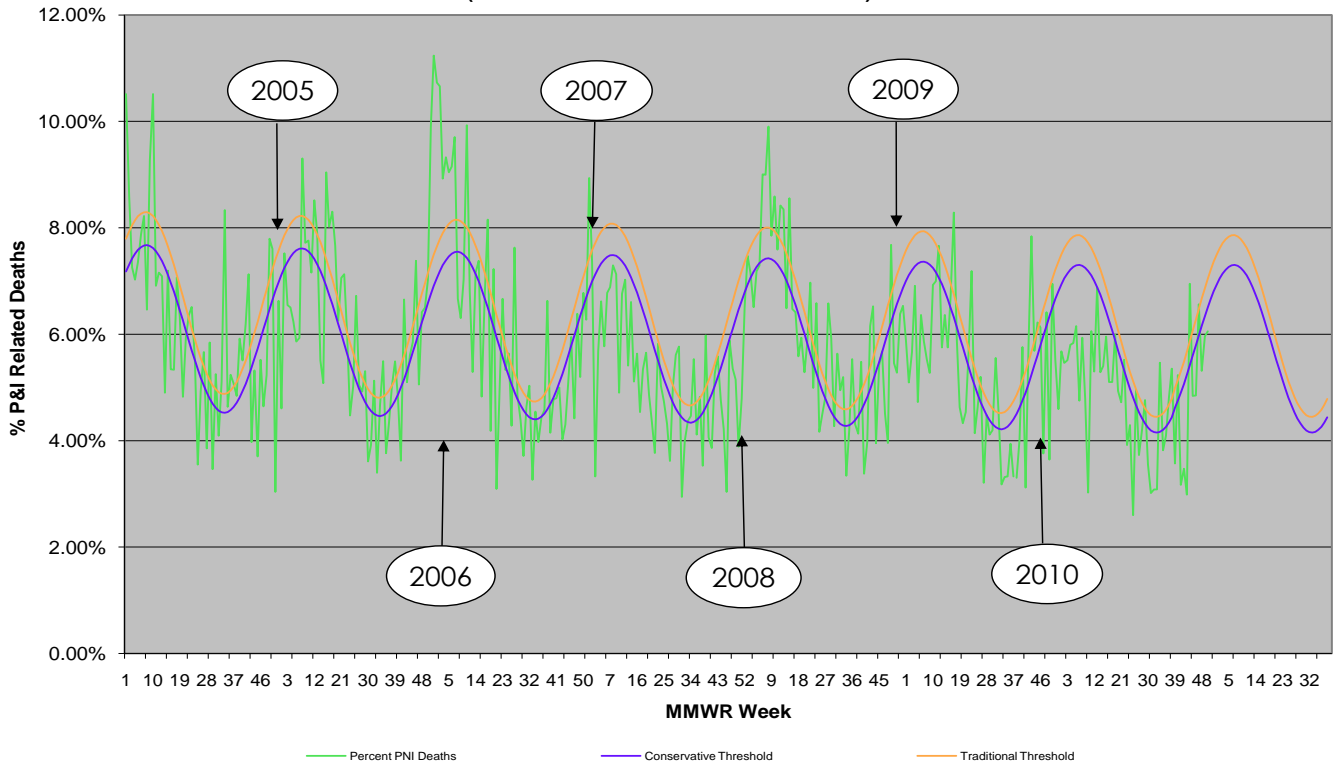
(n=8 facilities) (Source: Biosense)



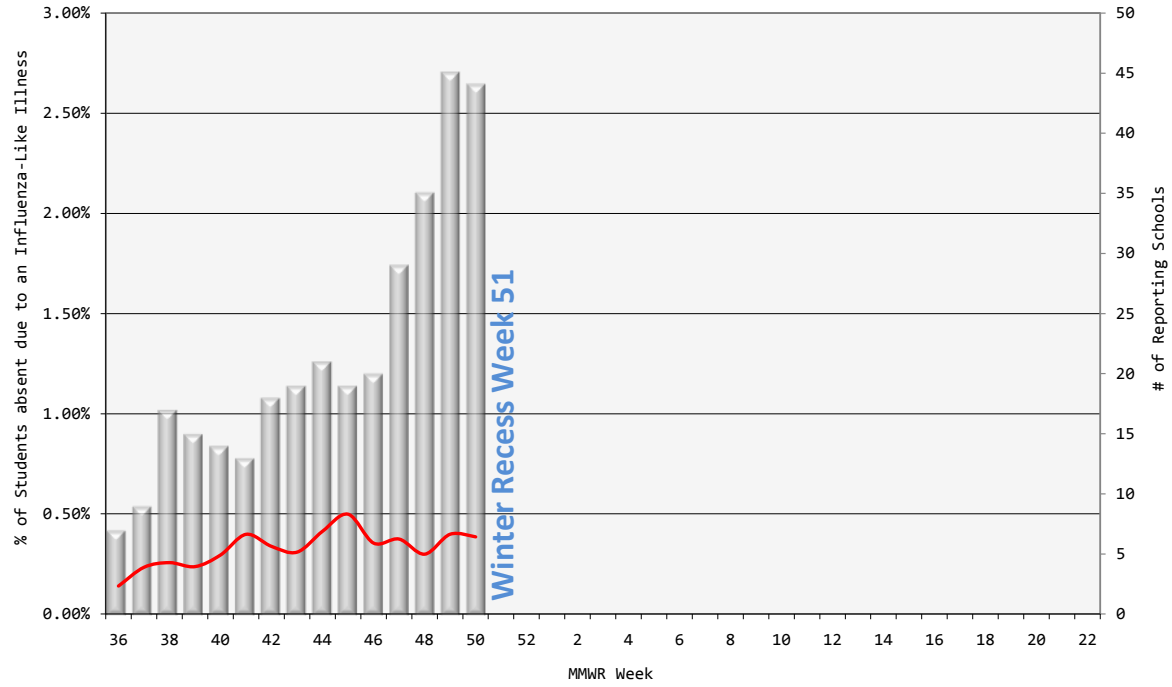
Maricopa County 2010-2011
Pneumonia and Influenza Related Deaths
 (Source: MCDPH Office of Vital Statistics)



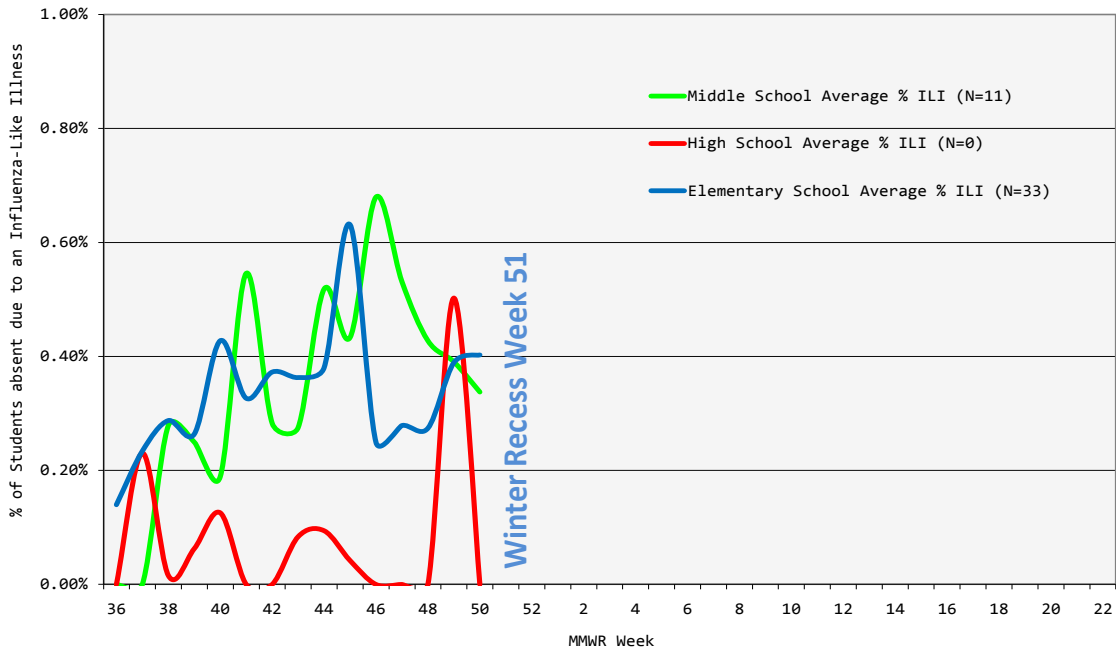
Maricopa County 2004-2011
Pneumonia and Influenza Related Deaths
 (Source: MCDPH Office of Vital Statistics)



Maricopa County 2010-2011:
School ILI Surveillance by MMWR Week (N=44 Schools)



Maricopa County 2010-2011:
School ILI Surveillance by MMWR Week (N=44 Schools)



Glossary:

2010-2011 Influenza Season is September 26, 2010 through October 1, 2011. In terms of the surveillance weeks recognized by the Centers for Disease Control, the 2010-11 Season is Week 39 2010 through Week 39 2011.

Activity Levels: Indicator of the geographic spread of influenza activity, reported to CDC by all states each week.

Widespread: Increased influenza-like illness from sentinel providers (ILI) in three or more regions and large numbers of laboratory-confirmed influenza cases in those regions.

Regional: Increased ILI in two regions and elevated numbers of laboratory-confirmed influenza cases in those regions.

Local: Increased ILI in one region and elevated numbers of laboratory-confirmed influenza cases in that region.

Sporadic: No increase in ILI activity and only isolated laboratory-confirmed influenza cases.

No Activity: No increase in ILI activity and no laboratory-confirmed influenza cases.

Influenza Activity outside Maricopa County

Information on influenza activity outside Maricopa County is available at these sites:

- http://azdhs.gov/phs/oids/epi/flu/az_flu_surv.htm (Arizona Department of Health Services)
- <http://www.cdc.gov/flu/weekly/fluactivity.htm> (CDC)

Due to wide variability between national- and local-level data, it is not appropriate to apply any national baselines or thresholds to the information presented in this report.

Please email any questions about this report to: vjollcaberisha@mail.maricopa.gov

Report generated: 12/23/2010

Influenza Surveillance Participants include:

Arizona Department of Health Services

Cigna Health Care Centers

Arizona State University Campus Health Services

Local Hospital Emergency Departments & Infection Control Practitioners

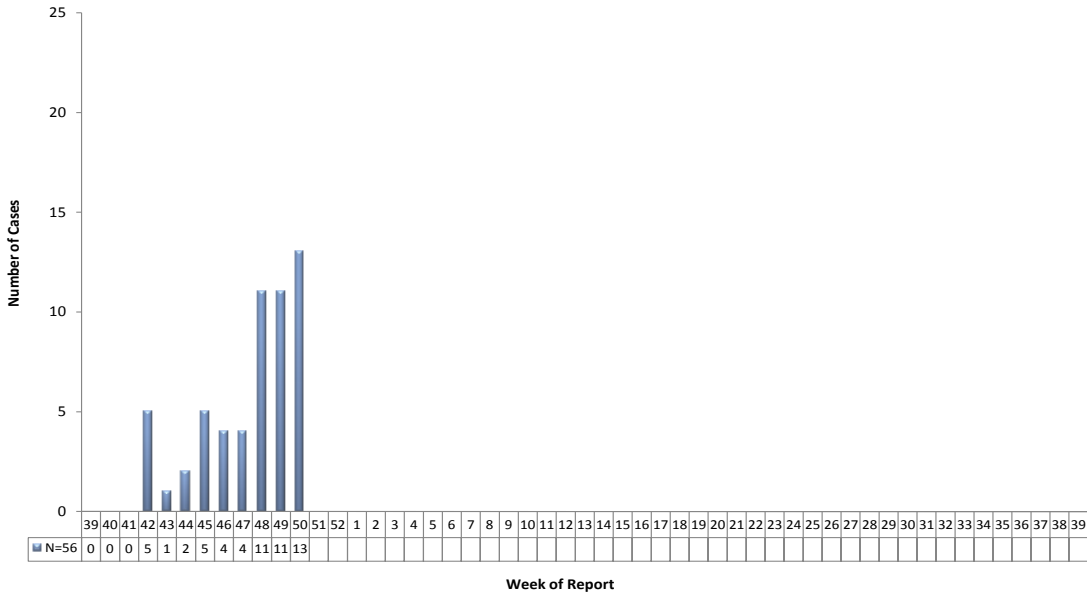
72 Maricopa County Public Schools

MARICOPA COUNTY RSV SUMMARY UPDATE

WEEK 50 (12/12/10-12/18/10)

Respiratory Syncytial Virus (RSV) Lab Surveillance: At the time of this report, 56 lab-confirmed cases of RSV have been reported through Week50.

**Lab-Confirmed Respiratory Syncytial Virus (RSV) Cases Reported:
10-11 Season** (Source: ADHS)



**Lab-Confirmed Respiratory Syncytial Virus (RSV) Cases:
05-06, 06-07, 07-08, 08-09, 09-10 & 10-11 Seasons** (Source: ADHS)

