

MARICOPA COUNTY INFLUENZA SUMMARY and RSV UPDATE
WEEK 44 (10/31/10-11/6/10)

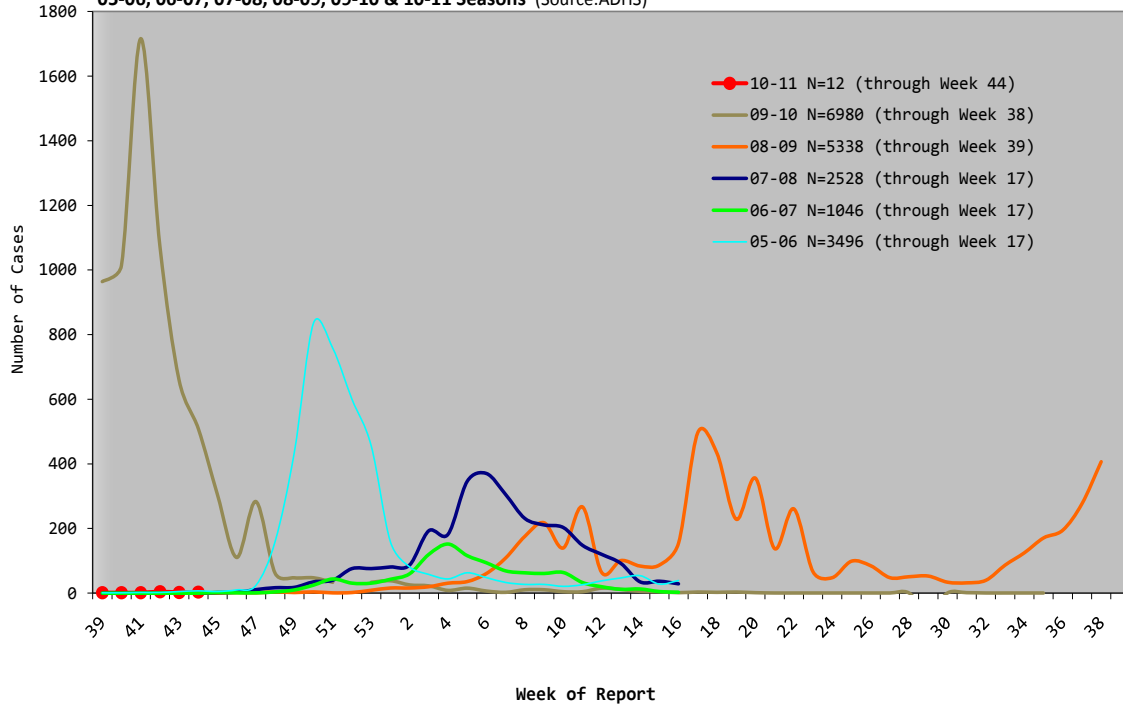
Data contained in this report reflect the time period above except where noted.

- **Current Key Findings:** The first day of the 2010-2011 Influenza season in Maricopa County was September 26th, 2010 and will continue through October 1, 2011. The overall level of flu activity at this time continues to be low. Maricopa has a total of 12 confirmed cases of Influenza. The following serotypes have been reported: Types A (5), A/H3 (3), B (3), and Unknown (1).
- **Lab Confirmed Influenza:** Between Weeks 43 and 44 of 2010, 3 cases of influenza have been confirmed at the Arizona State Laboratory.
- **Pneumonia & Influenza Mortality:** 6.95% of deaths from all causes were due to pneumonia or influenza during week 44. This is the highest percentage of P&I deaths this season, exceeding last year's numbers.
- **Pediatric Deaths Associated with Laboratory-Confirmed Influenza:** No deaths have occurred in the 2010-11 season.
- **Influenza-Like Illness (ILI)** (Through week 44)
 - **Cigna Health Centers** (n=20): 0.07% of visits due to ILI. (provisional data; subject to change as updated information becomes available)
 - **Hospital Emergency Departments** (n=17): 1.98% of visits were due to ILI. Due to low influenza activity at this time, only eleven hospital emergency departments reported.
- **Selected Emergency Department (ED) Visits:** (n=6)
 - Less than 1% of all visits were due to ILI. (As of 11/12/2010)
 - 13.73% of all visits were due to a respiratory syndrome. (As of 11/12/2010)
- **School Syndromic Surveillance:** Less than 1% of students were absent from school due to an Influenza-like-illness during week 45. Elementary schools experienced a slight increase in their percent ILI this week. (As of 11/12/2010)
- **Respiratory Syncytial virus (RSV):** Eight cases of RSV have been reported this season.

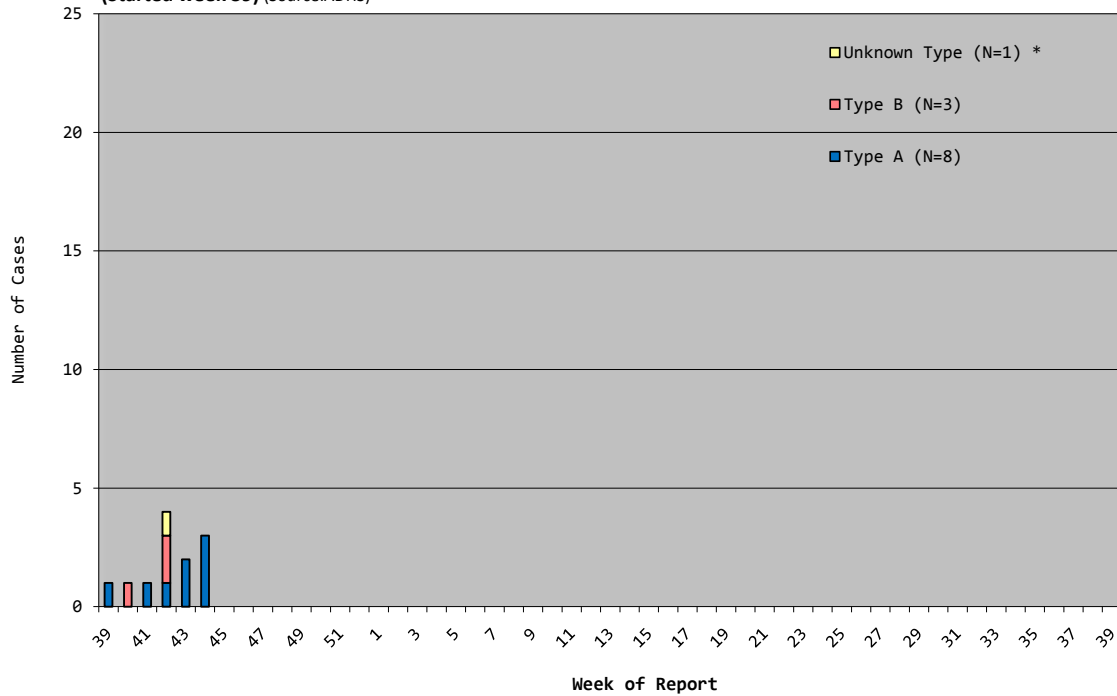
Arizona Influenza Activity Levels: (see definitions at <http://www.cdc.gov/flu/weekly/fluactivity.htm>)

	2010-2011	2009-2010	2008-2009	2007-2008	2006-2007
This Week (Week 44)	Sporadic	Widespread	No activity	No activity	No activity
Last Week (Week 43)	Sporadic	Widespread	No activity	No activity	No activity
Date First Case Confirmed	Sept. 28, 2010	Confirmed during summer	Nov. 19, 2008	Nov. 19, 2007	Nov. 17, 2006
Weeks with Widespread Activity	-	Weeks 40 – 49	Weeks 6 – 13 Weeks 17 – 24 Weeks 35 – 39	Weeks 4 – 12	No widespread activity

**Lab-Confirmed Influenza Cases Reported:
05-06, 06-07, 07-08, 08-09, 09-10 & 10-11 Seasons** (Source:ADHS)

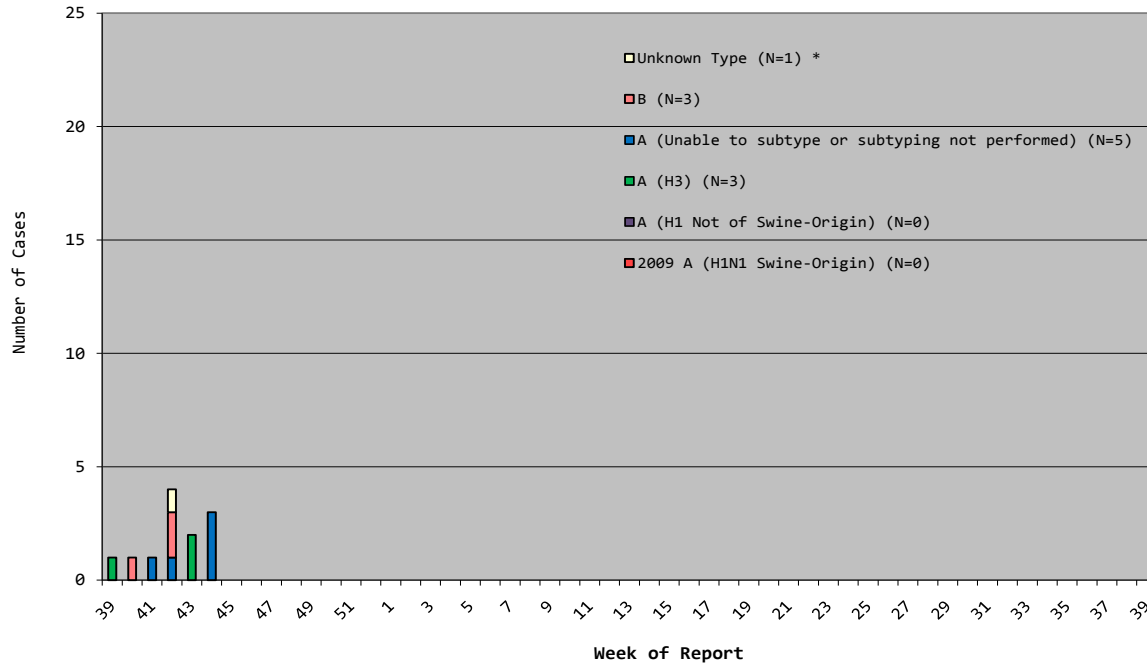


**Lab-Confirmed Influenza Cases Reported, 10-11 Season
(Started week 39)** (Source:ADHS)



*Sample sizes shown in chart legend represent confirmed influenza cases for the 2010-2011 season only. (Starting week 39)

**Lab-Confirmed Influenza Cases Reported, 10-11 Season
(Started week 39)** (Source:ADHS)



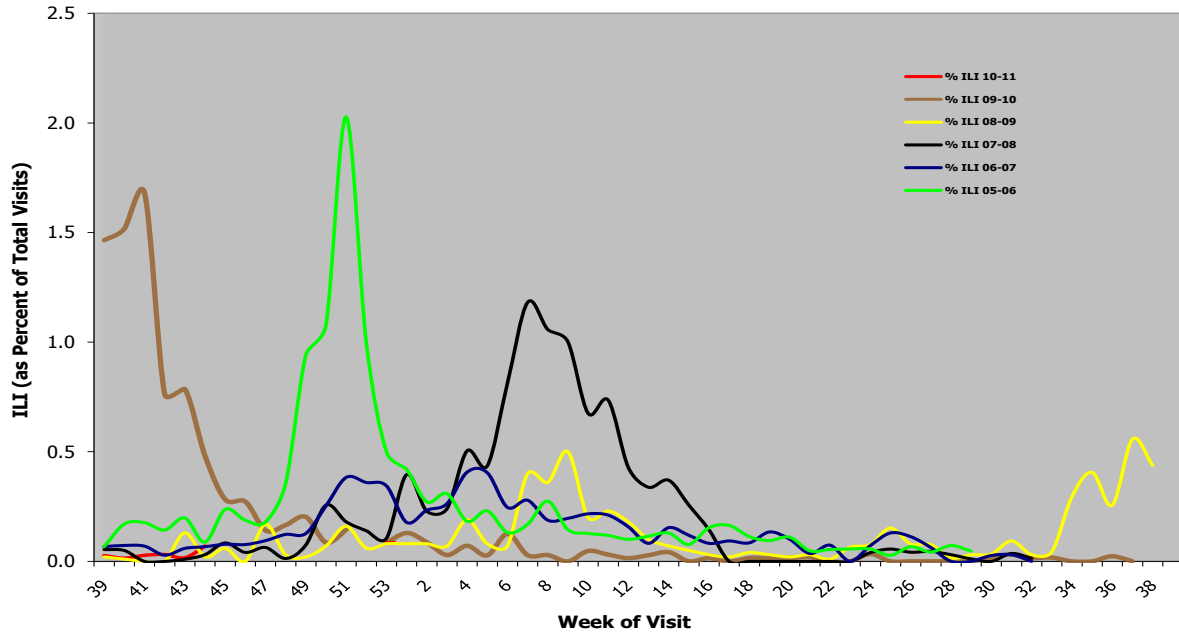
*Sample sizes shown in chart legend represent confirmed influenza cases for the 2010-2011 season only. (Starting week 39)

Influenza-Like Illness (ILI)* Surveillance

***ILI case definition: fever (at least 100°F) AND cough and/or sore throat.**

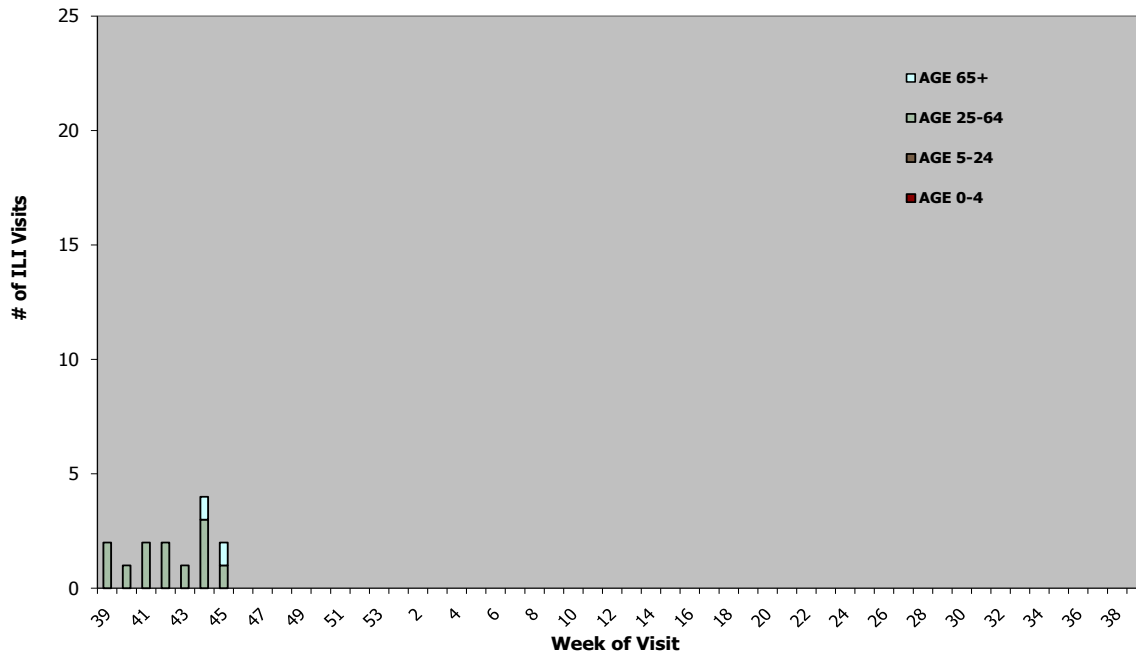
- During Week 44, 0.07% of patient visits to Cigna Health Care Centers (data from 20 centers, six departments) were due to ILI. During Week 44 of the two previous seasons, 0.79% (09-10) and 0.13% (08-09) of patient visits to Cigna Health Care Centers were due to ILI. (*Provisional data; may change in subsequent reports as updated information becomes available.)
- The percentage of Emergency Department visits for ILI (data from 9 hospitals) was 1.98% for Week 44.

Cigna Health Care Centers (n=20): ILI Visits as Percentage of Total Visits, 05-06, 06-07, 07-08, 08-09 & 09-2010 Seasons* (Source: Cigna Health Care Centers)



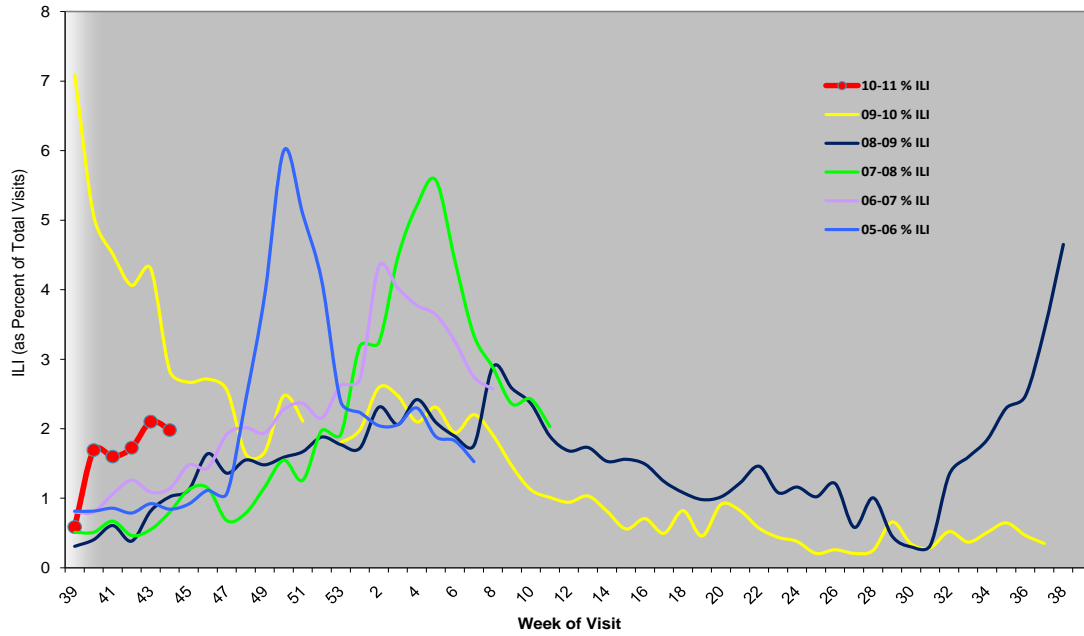
*Data may change in subsequent reports as updated information becomes available.

Cigna Health Care Centers (n=20): Number of Visits for Influenza-Like Illness (by age group) 10-11 Season* (Source: Cigna Health Care Centers)

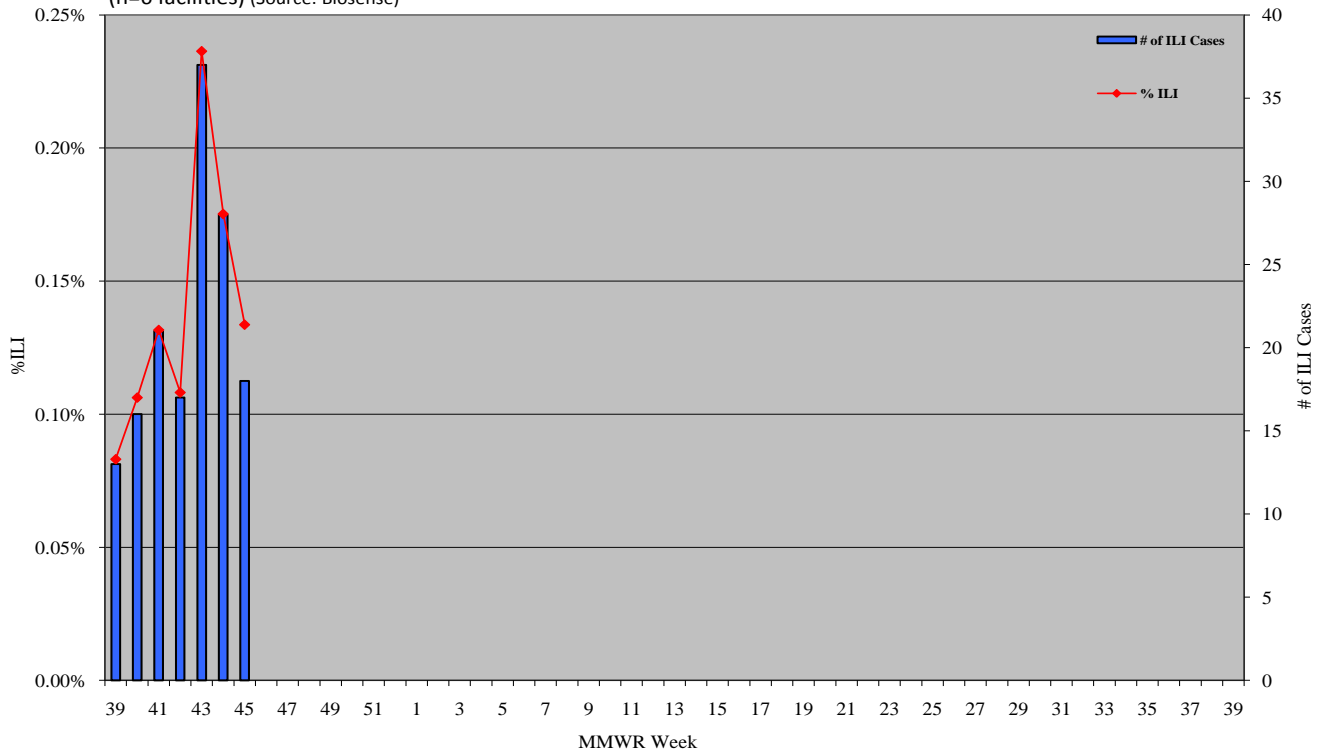


*Data may change in subsequent reports as updated information becomes available.

Hospital Emergency Departments (n=17): ILI Visits as Percentage of Total Visits
 05-06, 06-07, 07-08, 08-09, 09-10 & 10-11 Seasons
 (Source: 11 Emergency Departments and 6 Biosense Facilities)

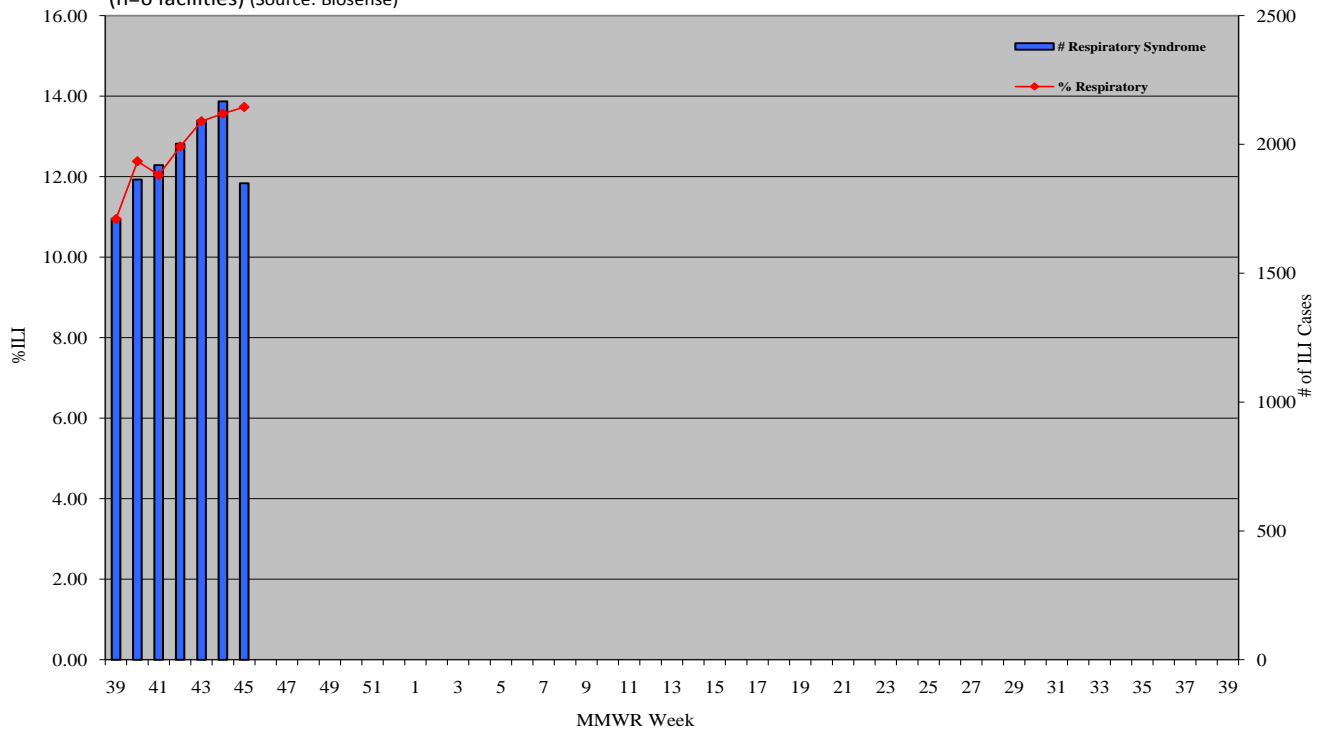


Selected Emergency Departments Weekly Syndromic Surveillance: Influenza-Like-Illness
 (n=6 facilities) (Source: Biosense)



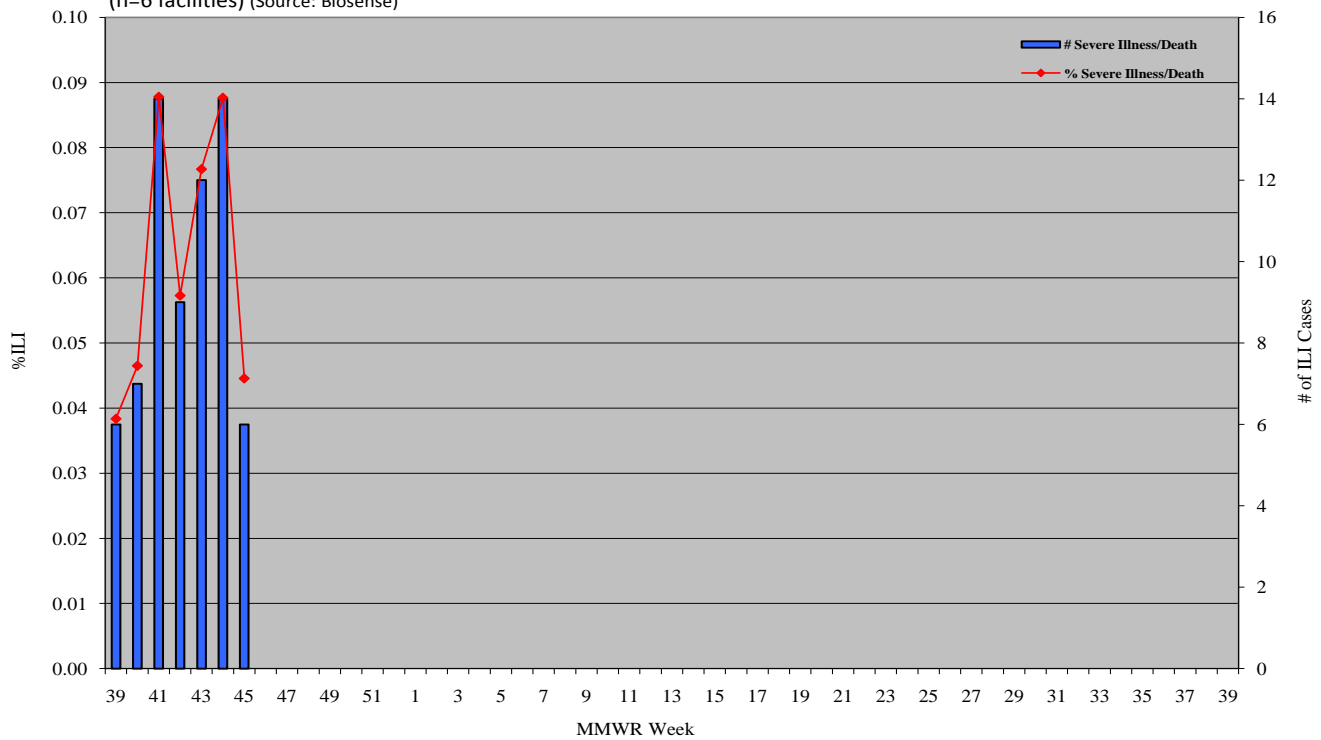
Selected Emergency Departments Weekly Syndromic Surveillance: Respiratory Syndromes

(n=6 facilities) (Source: Biosense)

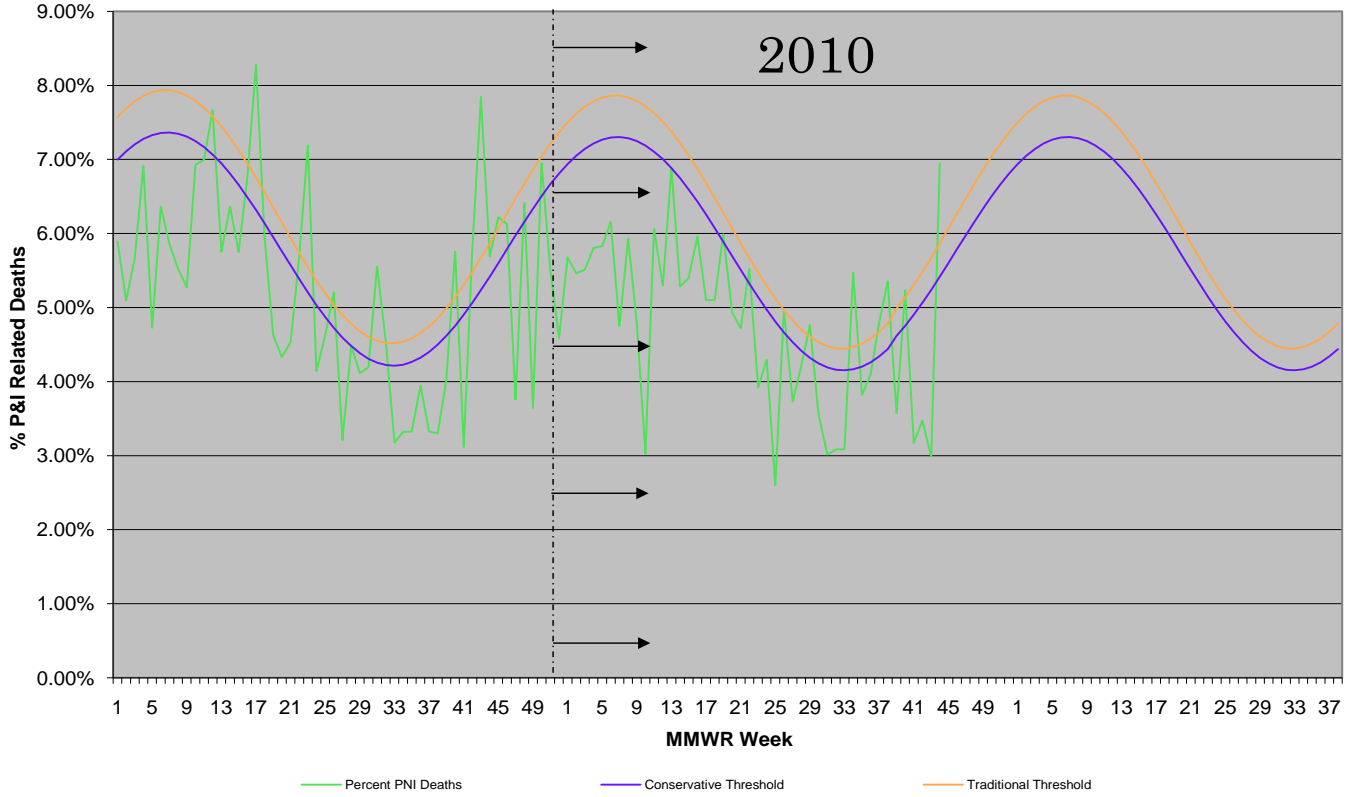


Selected Emergency Departments Weekly Syndromic Surveillance: Severe Illness/Deaths

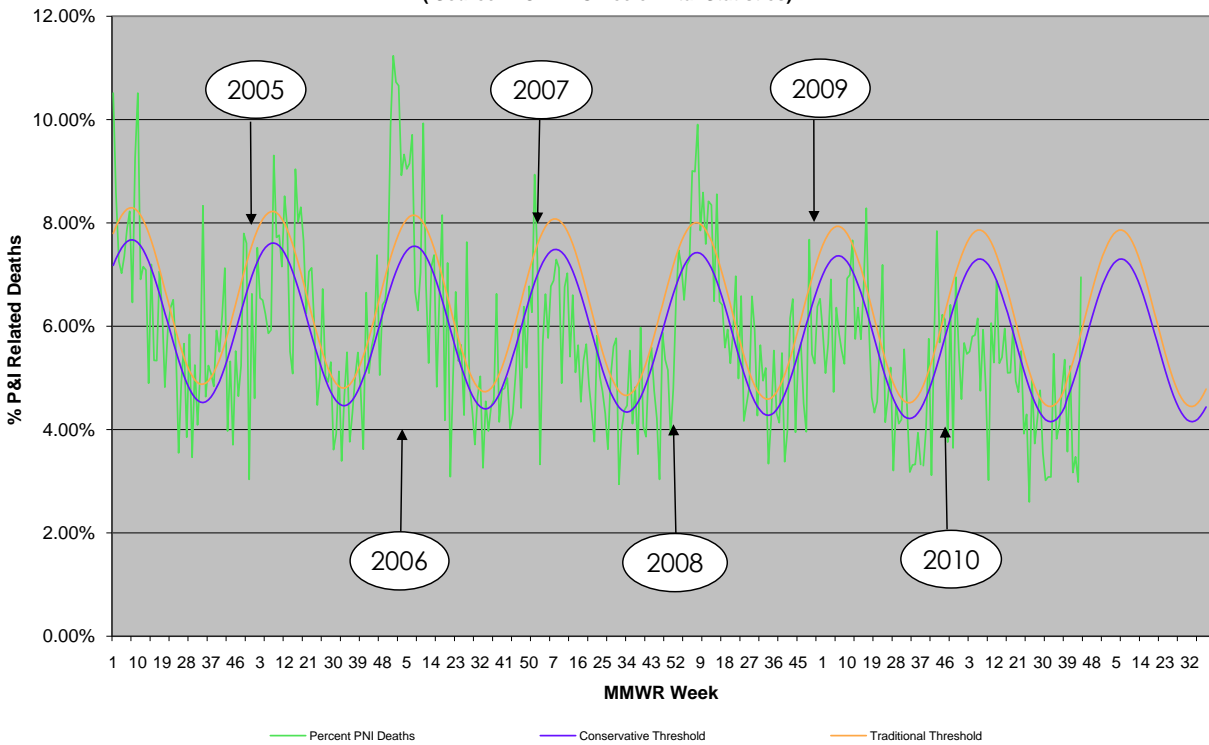
(n=6 facilities) (Source: Biosense)



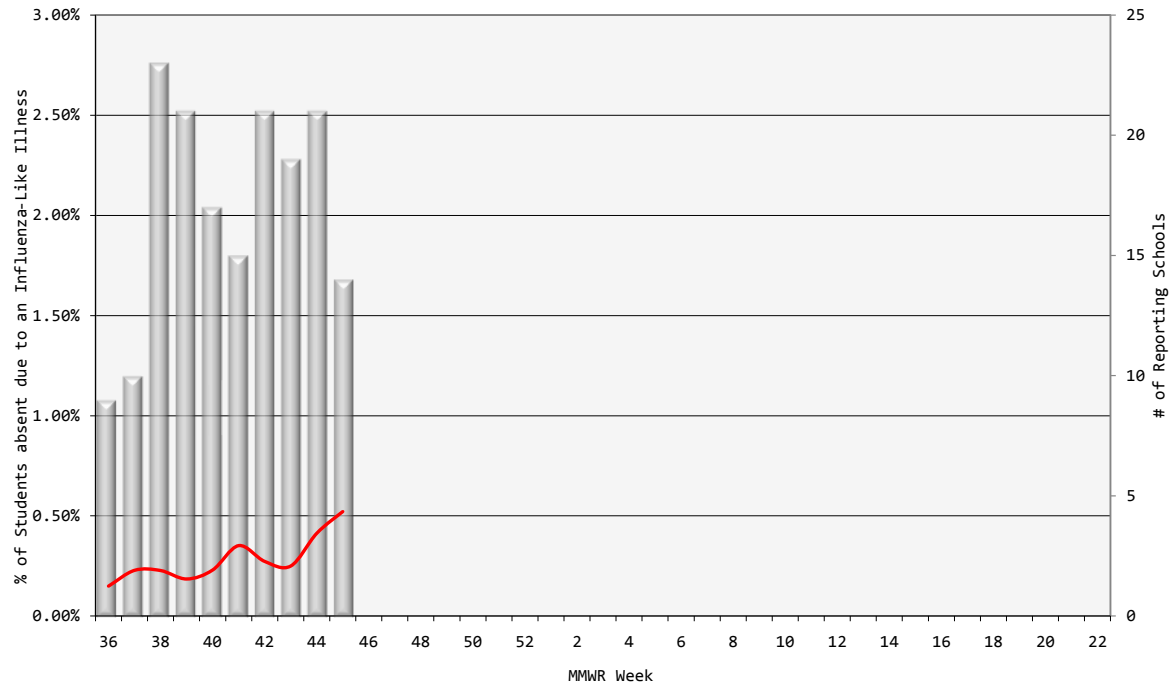
**Maricopa County 2010-2011
Pneumonia and Influenza Related Deaths**
(Source: MCDPH Office of Vital Statistics)



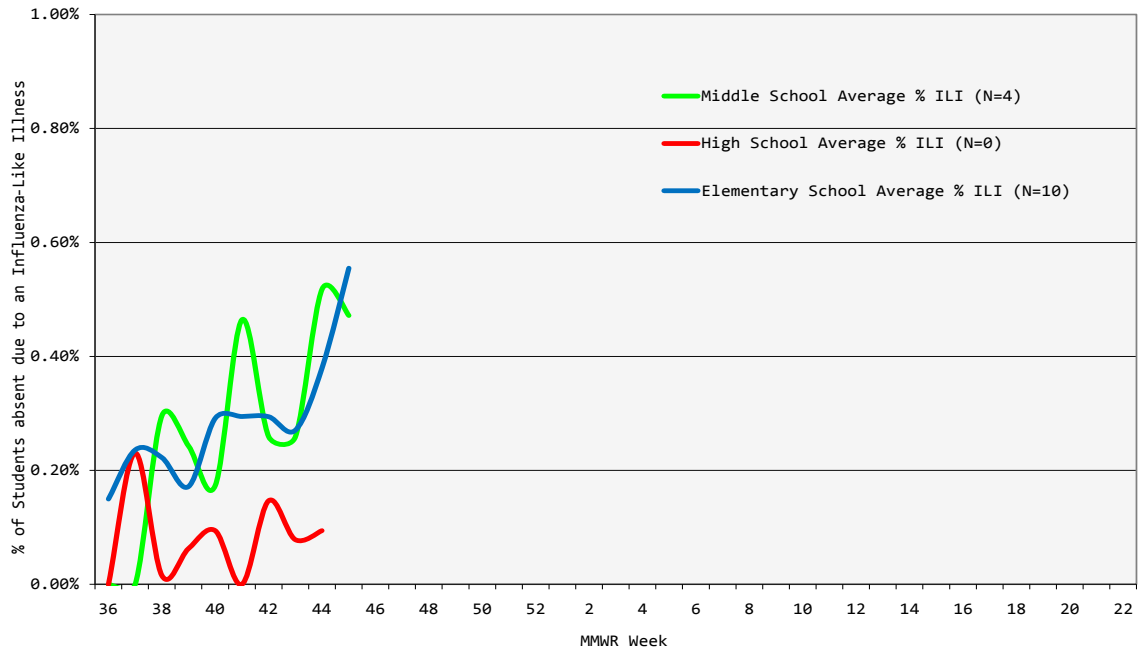
**Maricopa County 2004-2011
Pneumonia and Influenza Related Deaths**
(Source: MCDPH Office of Vital Statistics)



Maricopa County 2010-2011:
School ILI Surveillance by MMWR Week (N=14 Schools)



Maricopa County 2010-2011:
School ILI Surveillance by MMWR Week (N=14 Schools)



Glossary:

2010-2011 Influenza Season is September 26, 2010 through October 1, 2011. In terms of the surveillance weeks recognized by the Centers for Disease Control, the 2010-11 Season is Week 39 2010 through Week 39 2011.

Activity Levels: Indicator of the geographic spread of influenza activity, reported to CDC by all states each week.

Widespread: Increased influenza-like illness from sentinel providers (ILI) in three or more regions and large numbers of laboratory-confirmed influenza cases in those regions.

Regional: Increased ILI in two regions and elevated numbers of laboratory-confirmed influenza cases in those regions.

Local: Increased ILI in one region and elevated numbers of laboratory-confirmed influenza cases in that region.

Sporadic: No increase in ILI activity and only isolated laboratory-confirmed influenza cases.

No Activity: No increase in ILI activity and no laboratory-confirmed influenza cases.

Influenza Activity outside Maricopa County

Information on influenza activity outside Maricopa County is available at these sites:

- http://azdhs.gov/phs/oids/epi/flu/az_flu_surv.htm (Arizona Department of Health Services)
- <http://www.cdc.gov/flu/weekly/fluactivity.htm> (CDC)

Due to wide variability between national- and local-level data, it is not appropriate to apply any national baselines or thresholds to the information presented in this report.

Please email any questions about this report to: vjollcaberisha@mail.maricopa.gov

Report generated: 11/12/2010

Influenza Surveillance Participants include:

Arizona Department of Health Services

Cigna Health Care Centers

Arizona State University Campus Health Services

Local Hospital Emergency Departments & Infection Control Practitioners

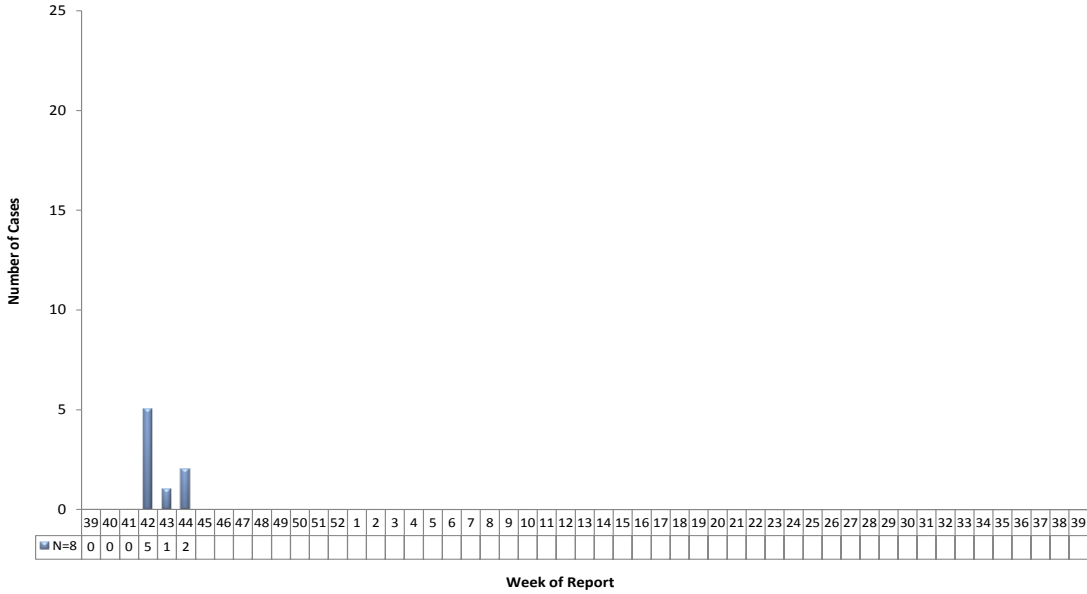
14 Maricopa County Public Schools

MARICOPA COUNTY RSV SUMMARY UPDATE

WEEK 44 (10/31/10-11/6/10)

Respiratory Syncytial Virus (RSV) Lab Surveillance: At the time of this report, 8 lab-confirmed cases of RSV have been reported through Week 44.

**Lab-Confirmed Respiratory Syncytial Virus (RSV) Cases Reported:
10-11 Season** (Source: ADHS)



**Lab-Confirmed Respiratory Syncytial Virus (RSV) Cases:
05-06, 06-07, 07-08, 08-09, 09-10 & 10-11 Seasons** (Source: ADHS)

