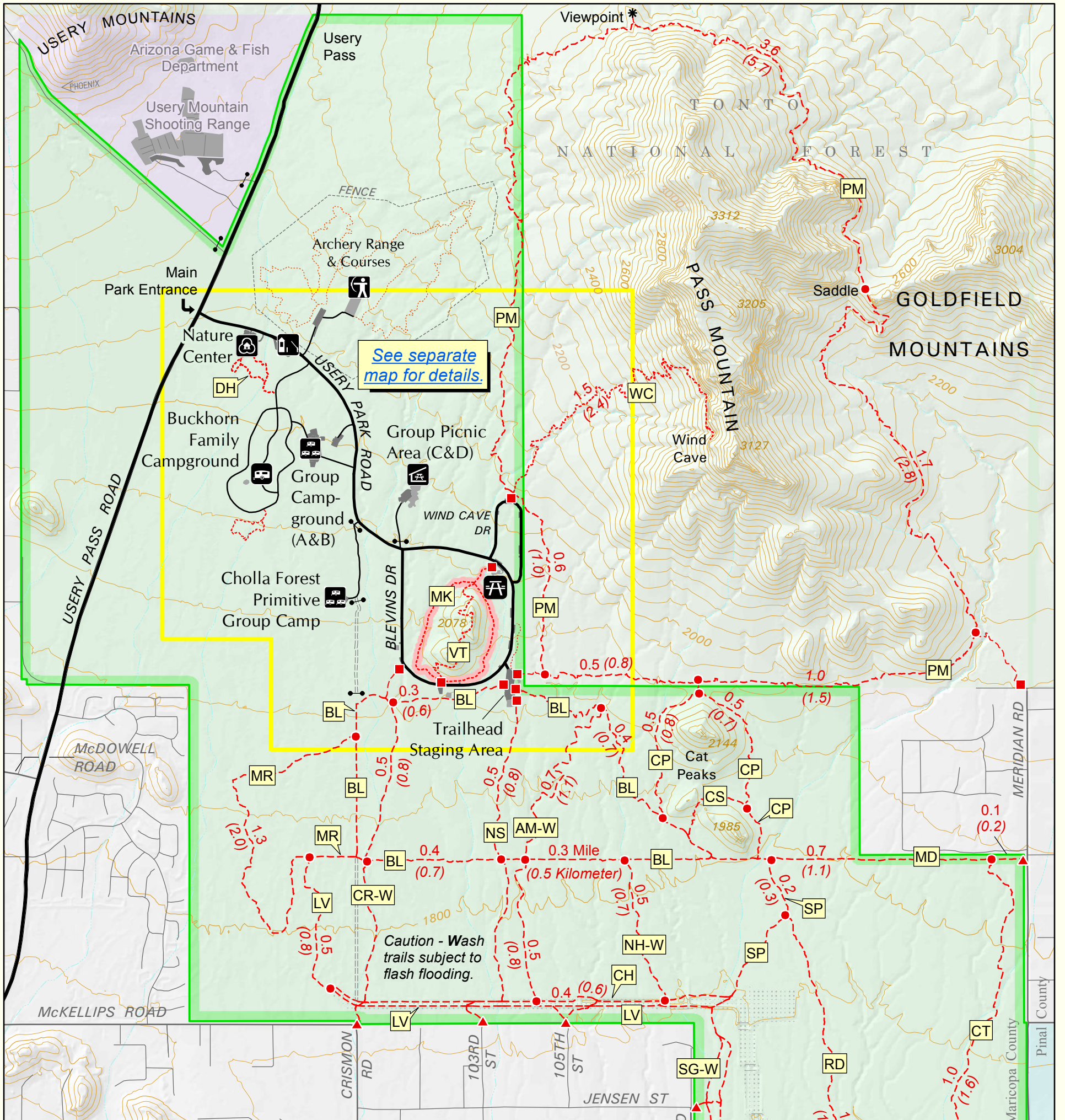


Usery Mountain Regional Park

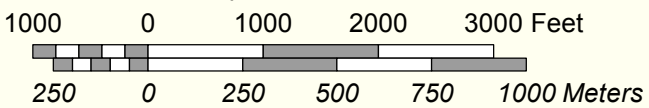


- FACILITIES**
- Entrance station
 - Nature Center
 - Archery range
 - Family campground
 - Group campground (By reservation)
 - Group picnic area (By reservation)
 - Picnic area (See separate close-up map.)

- Shared-use trail
- Hiker-only trail
- Barrier-free trail
- Archery course
- Trailhead
- Access gate
- Parking area
- Locked gate
- Service road
- Flood control facilities
- Regional Park boundary
- Bureau of Land Management
- State trust land
- Reclamation
- Private



Main Map Scale = 1:20,000



Contour Interval 40 Feet

Trail Code	Trail Name	Length Mi	Length (Km)	Trail Code	Trail Name	Length Mi	Length (Km)	Use/Restrictions
AM-W	Amigos Wash	1.2	(1.9)	MK	Merkle	0.9*	(1.4)*	Hike only, barrier-free/interpretive
BL	Blevins	3.0*	(4.8)*	MR	Moon Rock	1.4	(2.3)	
CP	Cat Peaks	1.1	(1.8)	NH-W	Nighthawk Wash	0.5	(0.7)	
CS	Cat Peaks Pass	0.3	(0.5)	NS	Noso	1.0	(1.5)	
CH	Channel	1.2	(2.0)	PM	Pass Mountain	7.4*	(12.0*)	
CT	County Line	1.0	(1.6)	RD	Ruidoso	1.3	(2.2)	
CR-W	Crismon Wash	0.9	(1.5)	SG-W	Signal Wash	0.5	(0.8)	
DH	Desert Hawk	0.5*	(0.8*)	SP	Spillway	1.2	(1.9)	Hike only
LV	Levee	1.6	(2.6)	VT	Vista	0.6	(0.9)	Hike only
MD	Meridian	0.9	(1.5)	WC	Wind Cave	1.5	(2.4)	Hike only

- Distances shown above are one-way unless indicated by * for loop distance; map does not show round-trip distances.
- Distances on map are for selected segments between trail junctions (•), or junction and trailhead.
- Due to rounding, segment lengths on map may not add up to trail totals shown above.
- Unless indicated, all trails are shared-use. Shared-use means all non-motorized access is allowed.



Maricopa County
Parks and Recreation