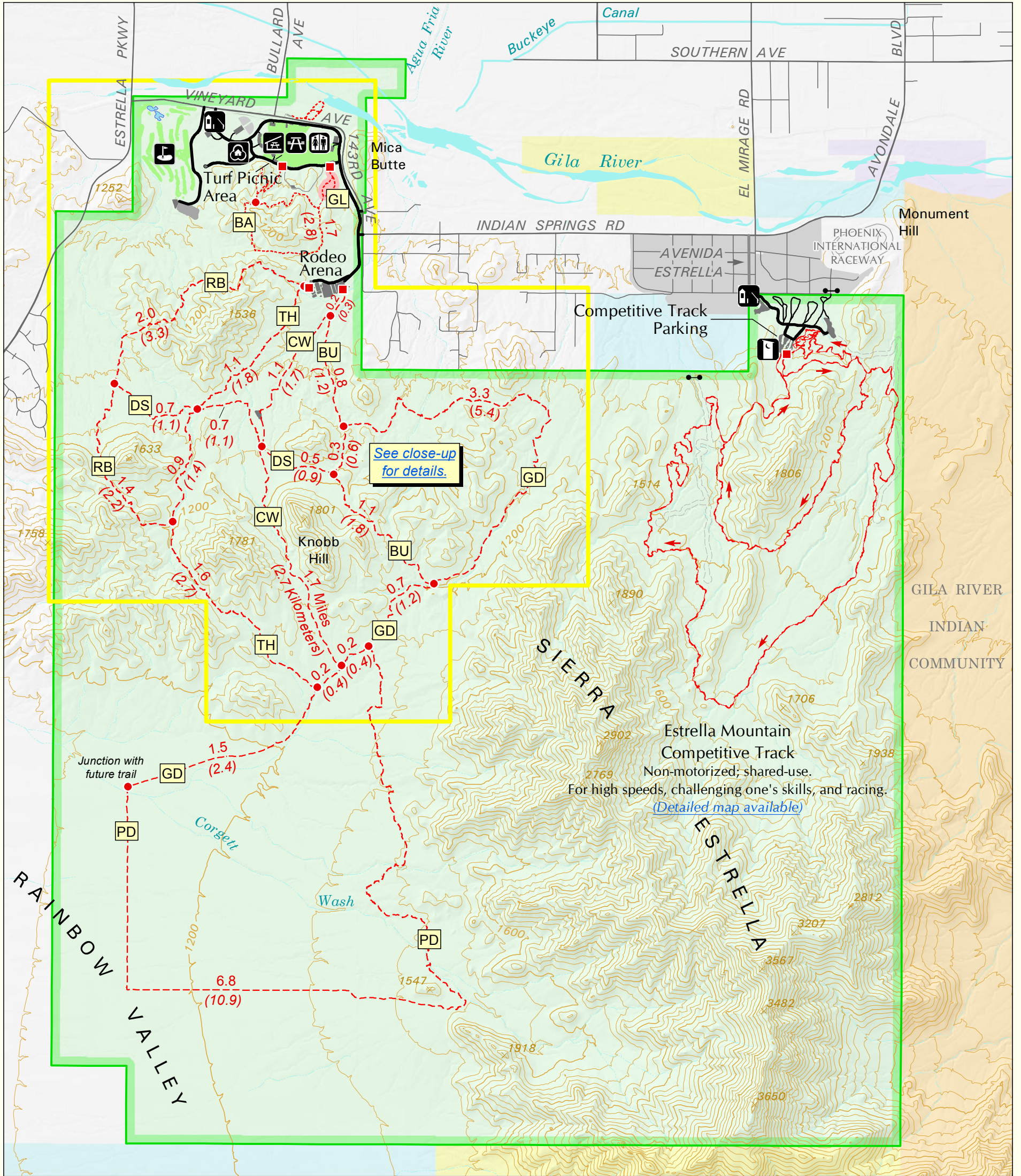


# Estrella Mountain Regional Park



- FACILITIES**
- Entrance station
  - Nature Center/Park Office
  - Turf Picnic Area (Day use only)
  - Group picnic ramada (Reservable)
  - Restrooms
  - Portable restroom
  - Tres Rios Golf Course

Note: Loop roads near Competitive Track are available for camping by reservation only.

- Shared-use trail
- Hiker-only trail
- Barrier-free trail
- Competitive track
- Trailhead/Track starting point
- Locked gate
- Regional Park boundary
- Bureau of Land Management
- AZ Game & Fish Department
- State trust land
- Private

Note: Selected roads shown. Numerous service roads and unofficial trails exist; for your safety, please stay on designated trails.

Trail Code	Trail Name	Length Mi	Length (Km)	Use & Restrictions
BA	Baseline	2.6*	(4.2)*	Hike only
BU	Butterfield	2.2	(3.6)	Shared use
CW	Coldwater	2.9	(4.7)	Shared use
DS	Dysart	1.9	(3.1)	Shared use
GD	Gadsden	6.0	(9.6)	Shared use
GL	Gila	0.5*	(0.7)*	Hike only, barrier-free
PD	Pedersen	6.8	(10.9)	Shared use
RB	Rainbow Valley	3.4	(5.5)	Shared use
TH	Toothaker	3.7	(5.9)	Shared use

- Distances shown above are one-way unless indicated by \* for round-trip distance; map does not show round-trip or loop distances.
- Distances on map are for segments between trail junctions (●), or junction and trailhead.
- Due to rounding, segment lengths on map may not add up to trail totals shown above.
- Shared Use means all non-motorized access is allowed.



Main Map Scale = 1:42,000

2000 0 2000 4000 6000 Feet

500 0 500 1000 1500 Meters

Contour Interval 80 Feet



**Maricopa County**  
Parks and Recreation