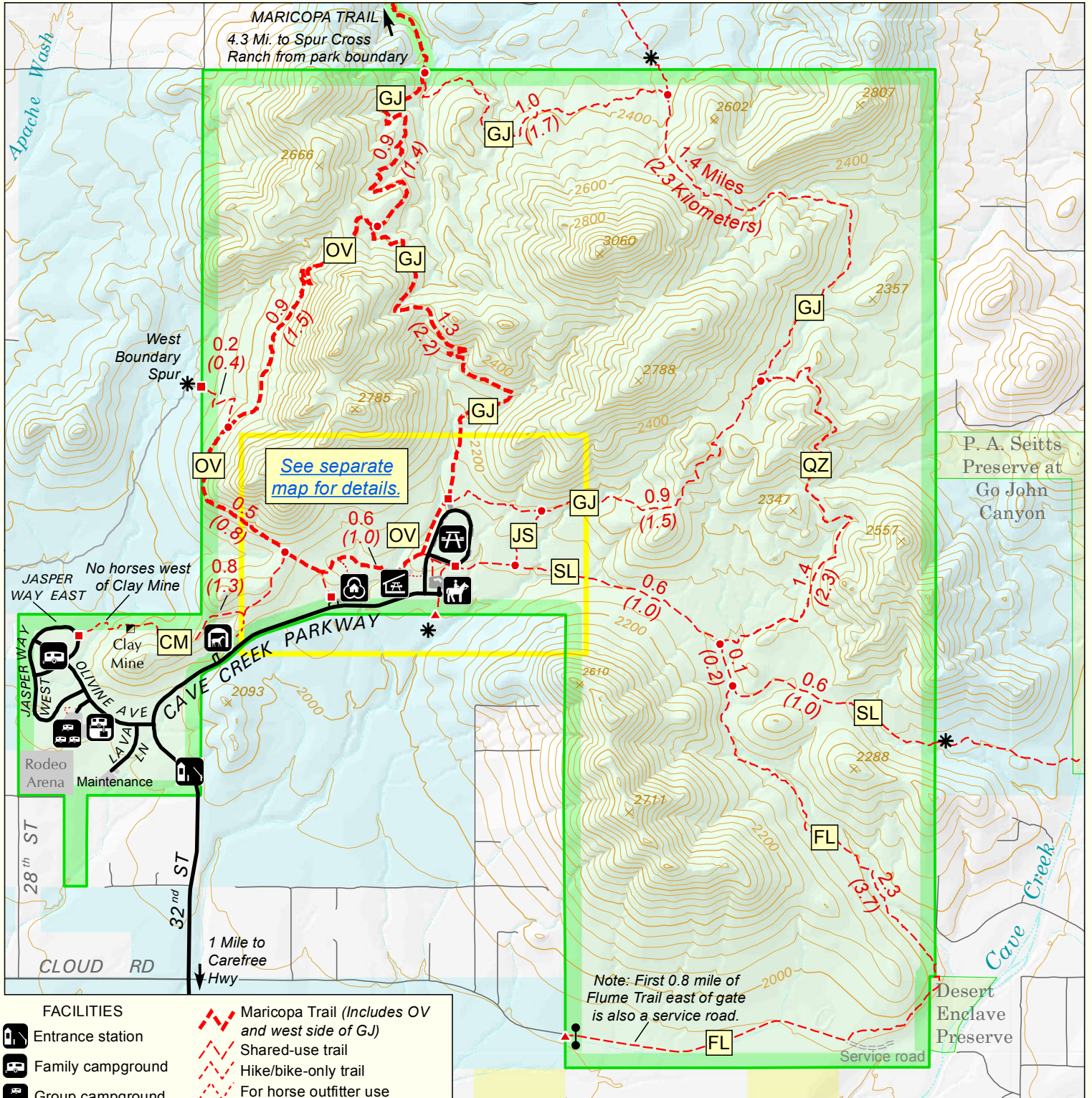


Cave Creek Regional Park



- FACILITIES**
- Entrance station
 - Family campground
 - Group campground
 - RV dump station
 - Horse rental
 - Nature Center
 - Group picnic area (Reservable)
 - Picnic area
 - Horse staging area
- Maricopa Trail (Includes OV and west side of GJ)
 - Shared-use trail
 - Hike/bike-only trail
 - For horse outfitter use
 - Trailhead
 - Access gate
 - Locked vehicle gate
 - Permit required for trust land
 - Regional Park boundary
 - Desert Foothills Land Trust
 - Bureau of Land Management
 - State trust land
 - Private

Trail Code	Trail Name	Length Mi	Length (Km)	Use
CM	Clay Mine	0.8	(1.3)	Shared Use†
FL	Flume	2.3	(3.7)	Shared Use
GJ	Go John	5.8*	(9.3)*	Shared Use
JS	Jasper	0.2	(0.3)	Shared Use
OV	Overton	1.9	(3.0)	Shared Use
QZ	Quartz	1.4	(2.3)	Shared Use
SL	Slate Trail	1.6	(2.5)	Shared Use

- Distances shown are one-way unless indicated by * for round trip distance.
- Distances on map are for segments between trail junctions (●), or junction and trailhead.
- Due to rounding, segment lengths on map may not add up to trail totals shown above.
- "Shared-use" means all non-motorized access is allowed.
- †CM trail west of the mine is hike/bike-only.



Maricopa County
Parks and Recreation

