

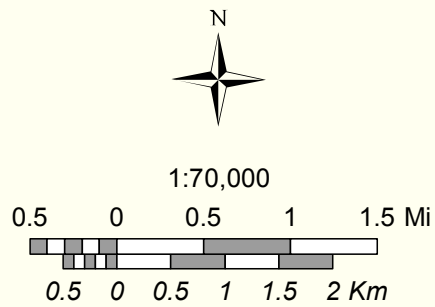
Maricopa Trail - Sun Circle Trail

Guadalupe - South Mountain - Tres Rios

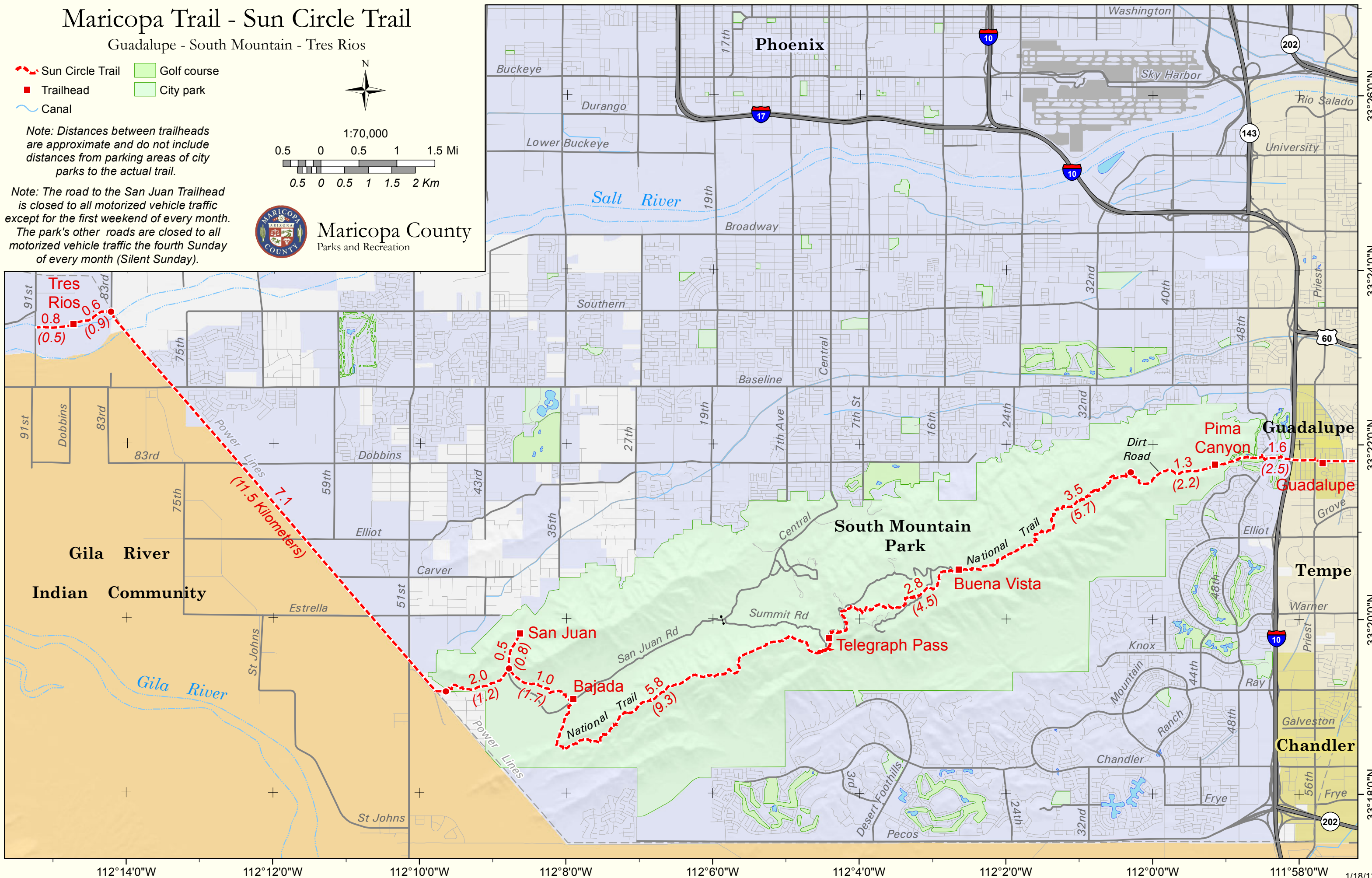
- Sun Circle Trail
- Trailhead
- Canal
- Golf course
- City park

Note: Distances between trailheads are approximate and do not include distances from parking areas of city parks to the actual trail.

Note: The road to the San Juan Trailhead is closed to all motorized vehicle traffic except for the first weekend of every month. The park's other roads are closed to all motorized vehicle traffic the fourth Sunday of every month (Silent Sunday).



Maricopa County
Parks and Recreation



Trail Segment	Distance (Miles)	Distance (Kilometers)
Tres Rios	0.8	1.3
San Juan	2.0	3.2
Bajada	1.0	1.6
Telegraph Pass	2.8	4.5
Buena Vista	3.5	5.7
Pima Canyon	1.3	2.1
Guadalupe	1.6	2.6
Total	11.5	18.5